

Supplementary Material

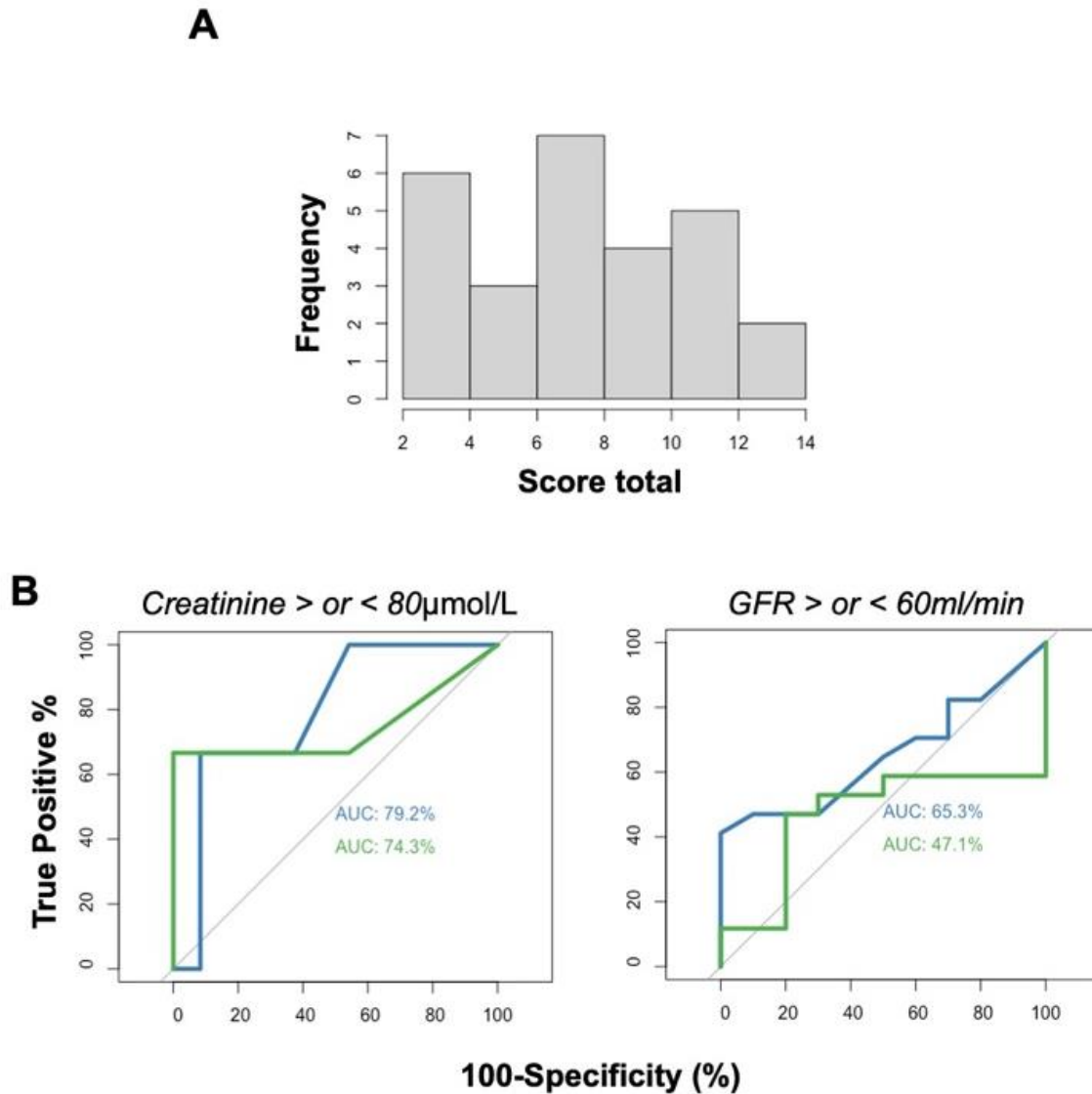


FIGURE S1. Evaluation of a new RS score. (A) Score distribution across the patients. (B) ROC curve illustrating the diagnostic ability of a new score to discriminate patients with eGFR above or below 80 μ mol/L at 1 year. (C) ROC curve illustrating the diagnostic ability of a new score to discriminate patients with eGFR above or below 60 mL/min at 1 year.

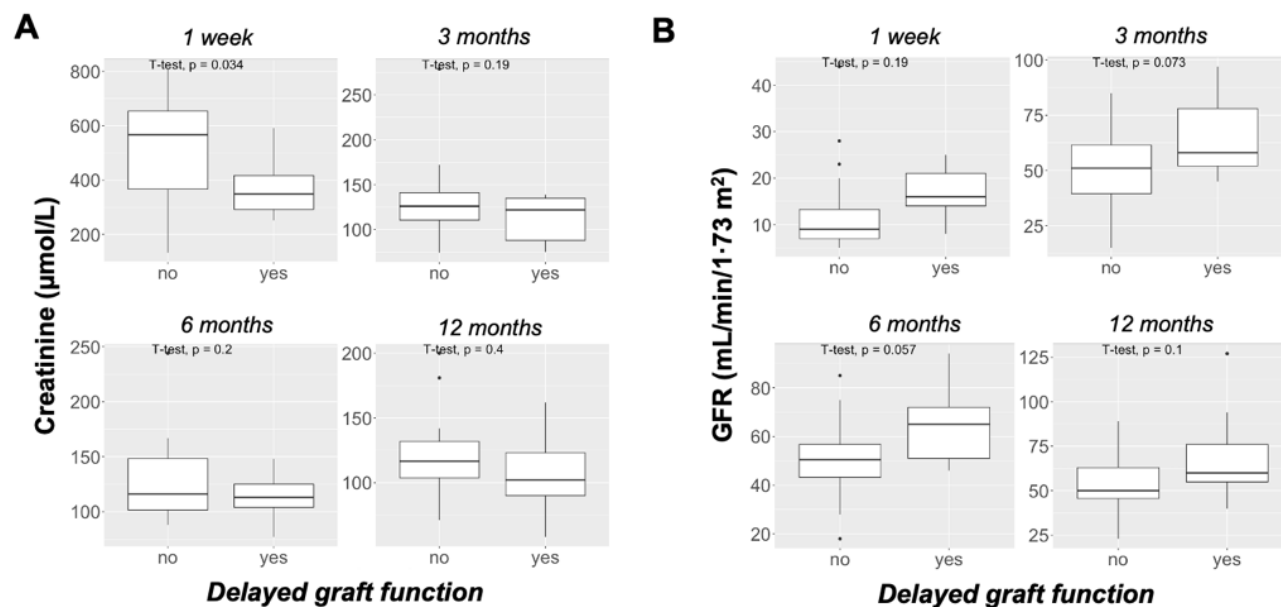


FIGURE S2. Serum creatinine level (A) and eGFR (B) at the indicated time as a function of delayed graft function.