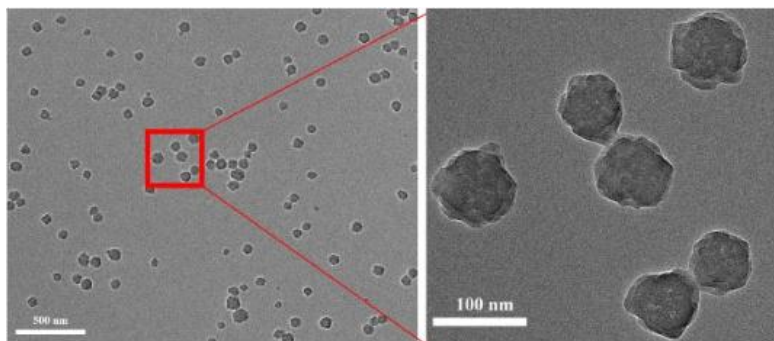
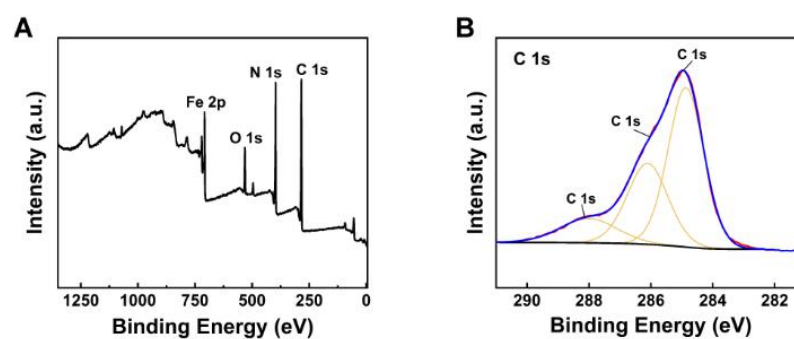


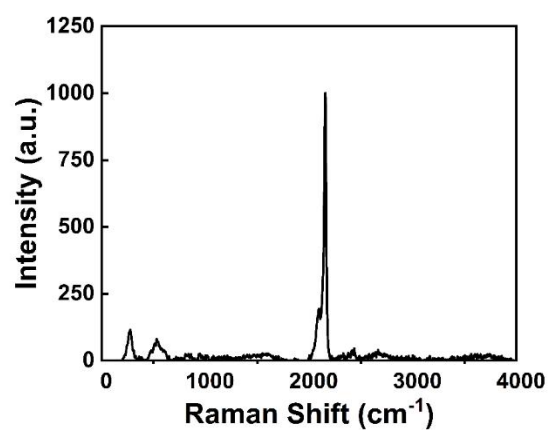
Supplementary Material

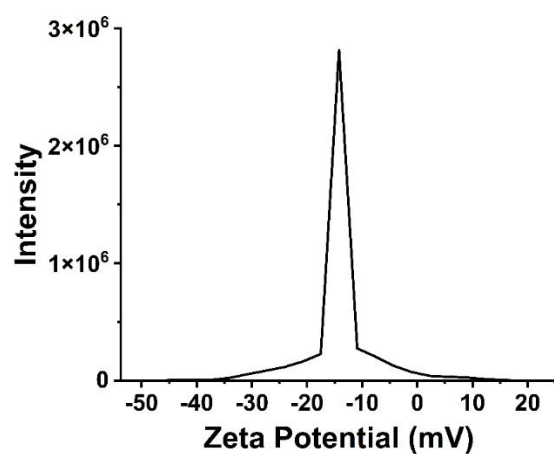
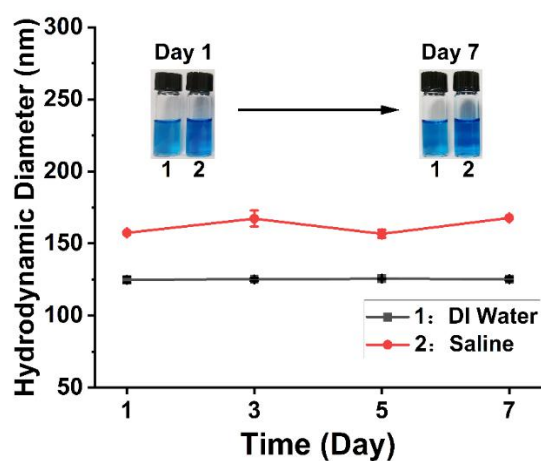


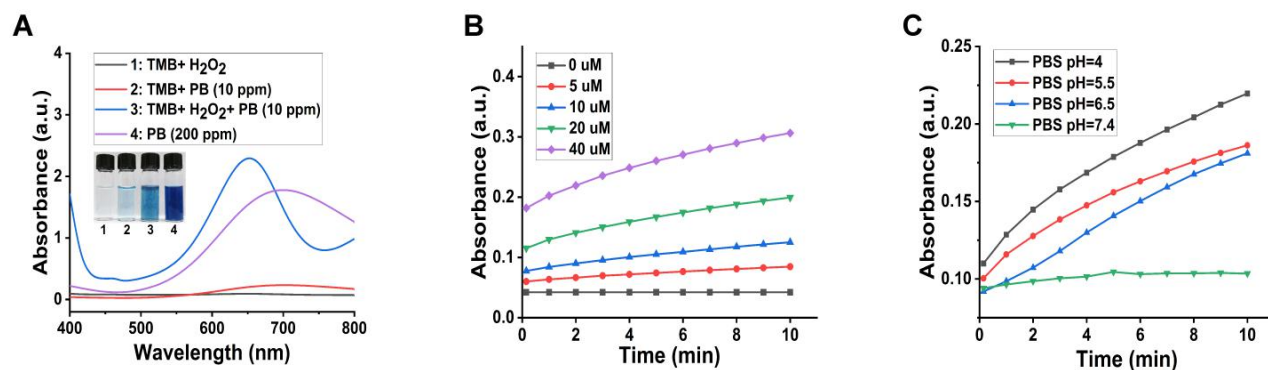
Supplementary Figure 1. TEM image of PB on different scale.



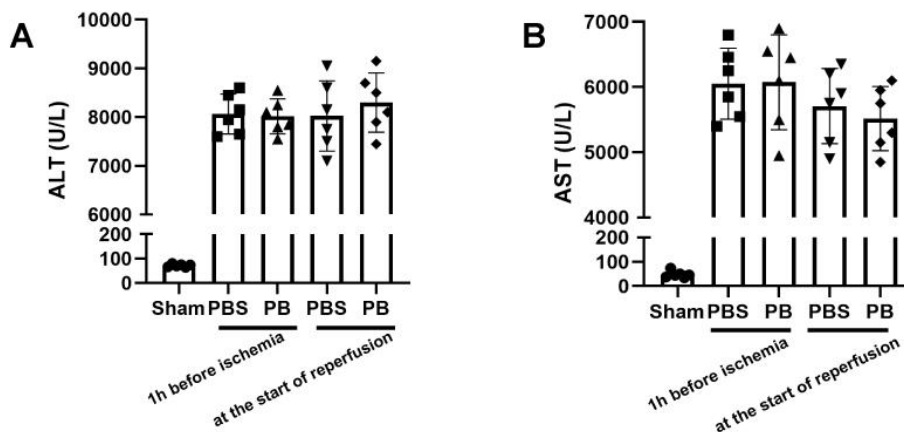
Supplementary Figure 2. XPS spectrum of all elements(A) and C 1s(B).



Supplementary Figure 3. Raman spectrum.**Supplementary Figure 4.** Zeta potentials.**Supplementary Figure 5.** Changes in the hydrodynamic size of PB incubated in different media for 7 days.



Supplementary Figure 6. POD-like activity of PB. (A) The absorbance curves of TMB/ H₂O₂+ PB of 400-800 nm wavelength (inset: Digital photo of TMB/ H₂O₂+ PB system). The time-dependent absorbance changes of TMB/ H₂O₂+ PB at 650 nm wavelength at various (B) PB concentrations (pH=5.5, TMB 100uM, H₂O₂ 1mM), (C) pH (PB=20uM, TMB 100uM, H₂O₂ 1mM).



Supplementary Figure 7. Serum levels of ALT (A) and AST (B) from different treatment groups after 90 min of ischemia and 6 h of reperfusion (n=6).