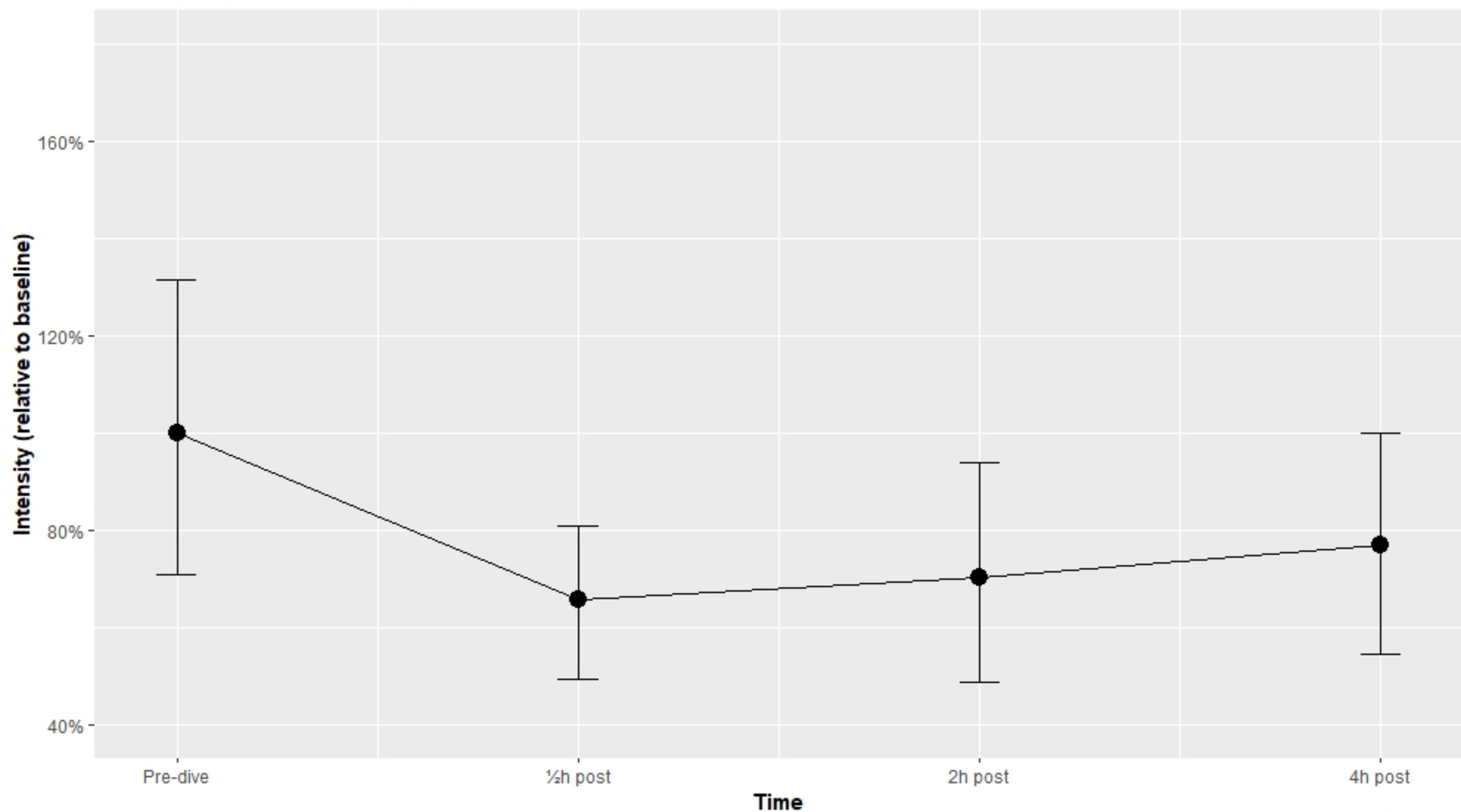


Methylcyclohexane (C₇H₁₄)
Typical fragments (m/z): 41, 55, 69, 83 and 98

Friedman test, $\chi^2(3) = 2.14$, $p = 0.54$, $n = 14$

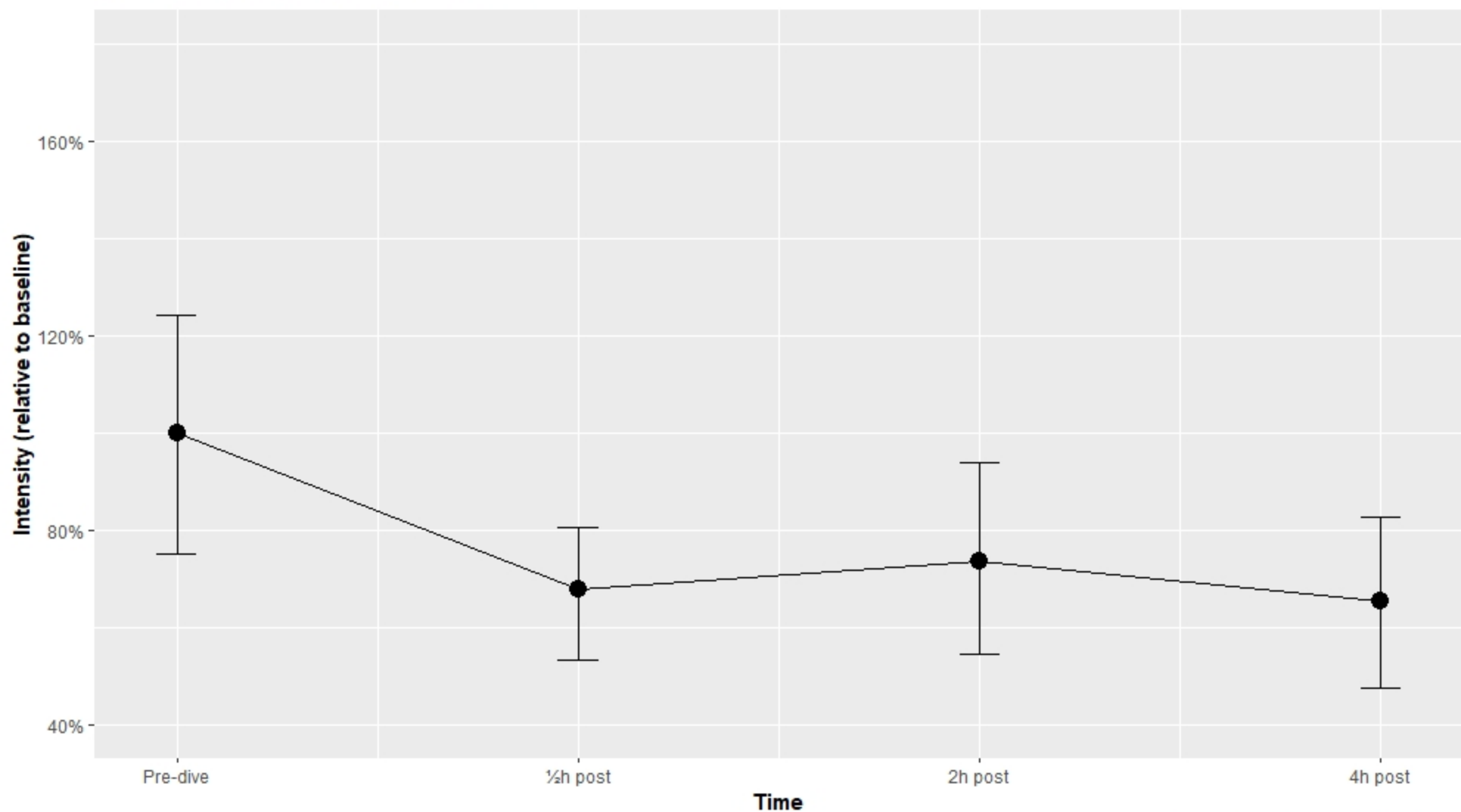


pwc: Wilcoxon test; p.adjust: Bonferroni

3-Methylheptane (C₈H₁₈)

Typical fragments (m/z): 41, 43, 56, 57, 84 and 85

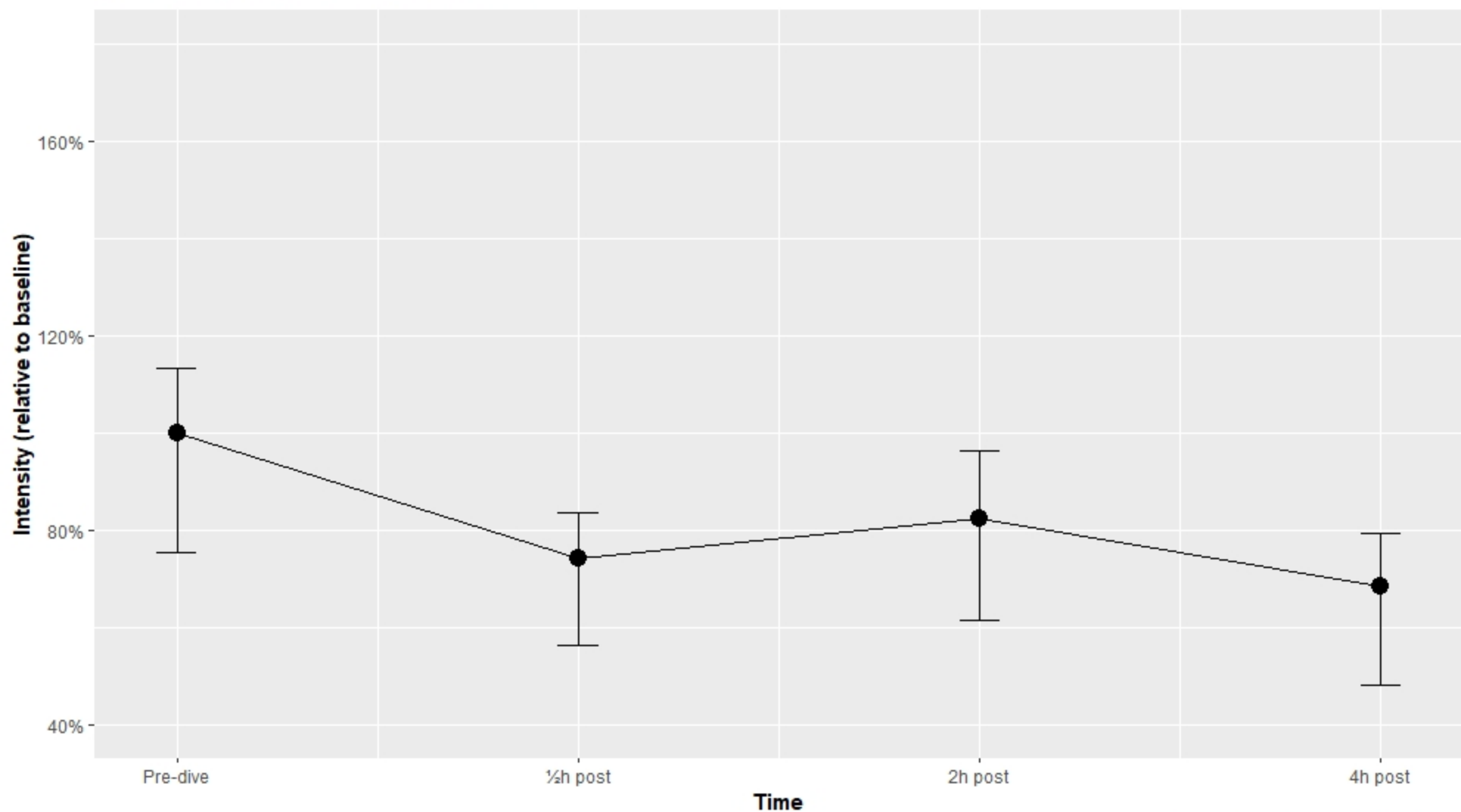
Friedman test, $\chi^2(3) = 2.83$, $p = 0.42$, $n = 14$



pwc: Wilcoxon test; p.adjust: Bonferroni

3-Methyleneheptane (C₈H₁₆)
Typical fragments (m/z): 41, 55, and 70

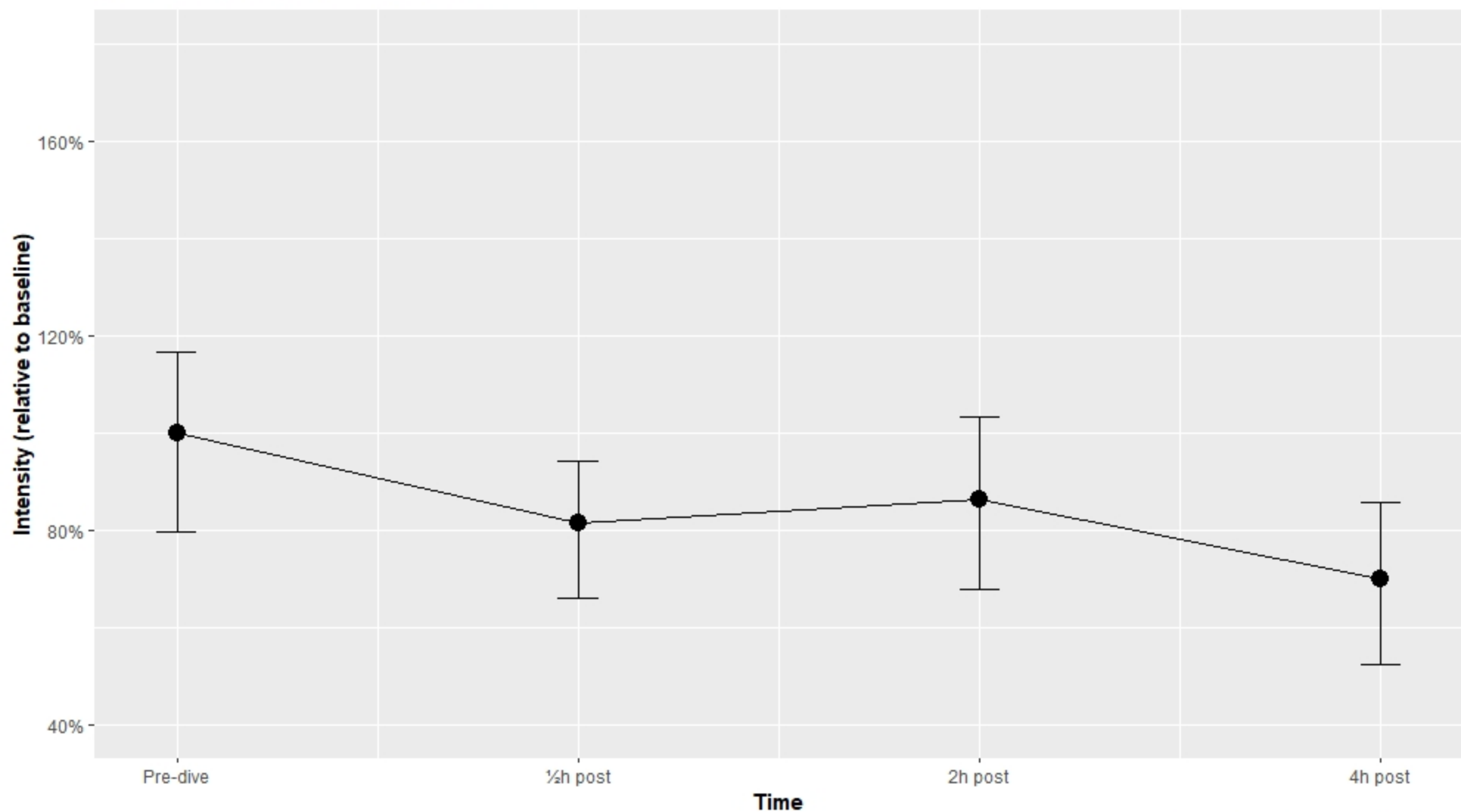
Friedman test, $\chi^2(3) = 3.17$, $p = 0.37$, $n = 14$



pwc: Wilcoxon test; p.adjust: Bonferroni

Octane (C₈H₁₈)
Typical fragments (mz): 41, 43, 57, 71, 85 and 114

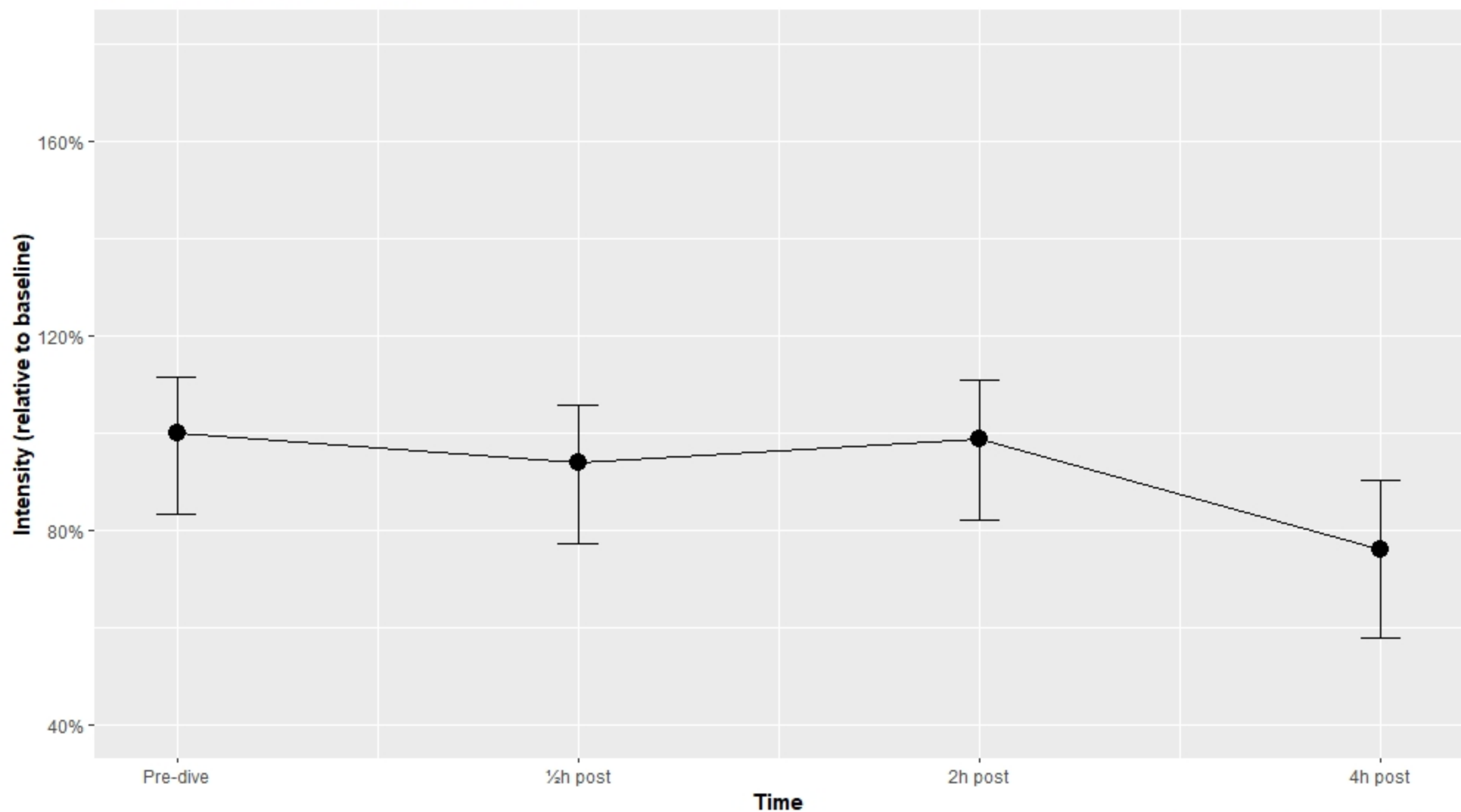
Friedman test, $\chi^2(3) = 4.89$, $p = 0.18$, $n = 14$



pwc: Wilcoxon test; p.adjust: Bonferroni

3-Methylnonane (C₁₀H₂₂)
Typical fragments (m/z): 43, 57, 71, and 112

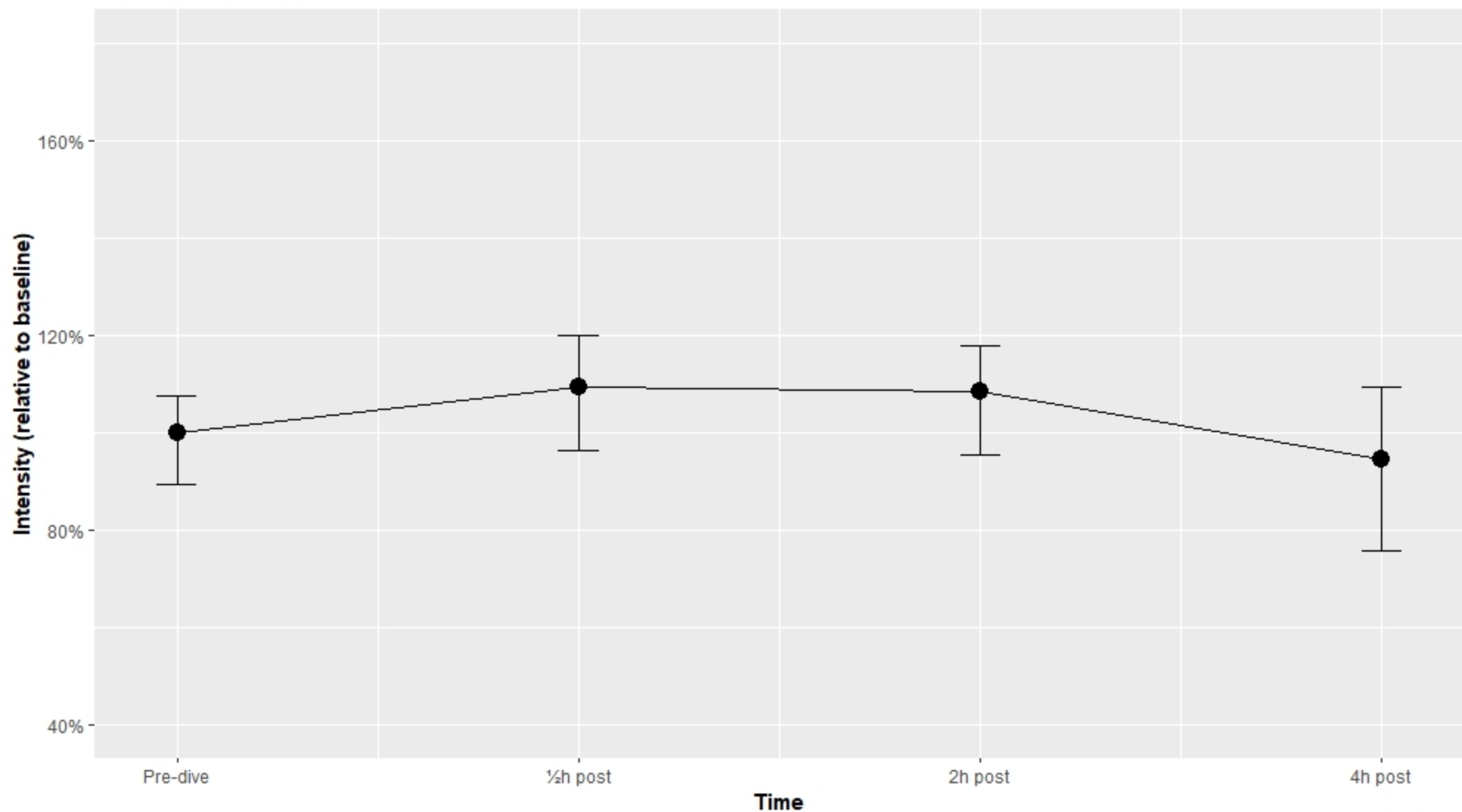
Friedman test, $\chi^2(3) = 7.63$, $p = 0.054$, $n = 14$



pwc: Wilcoxon test; p.adjust: Bonferroni

Tetradecane (C₁₄H₃₀)
Typical fragments (mz): 43, 57, 71, and 85

Friedman test, $\chi^2(3) = 5.4$, $p = 0.14$, $n = 14$



pwc: Wilcoxon test; p.adjust: Bonferroni