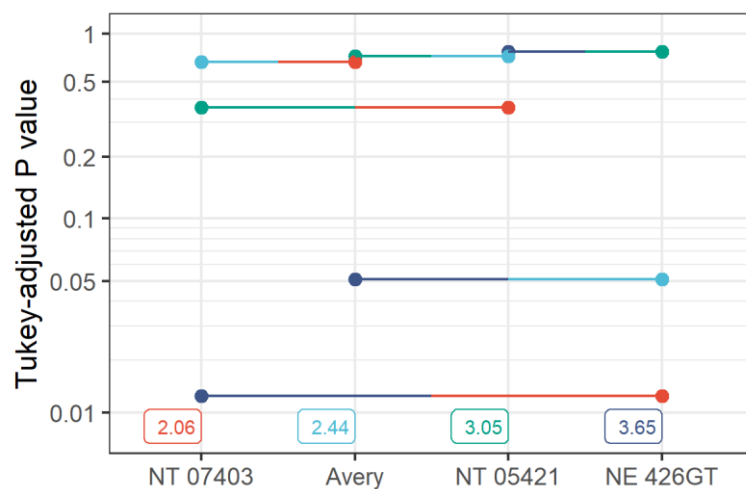
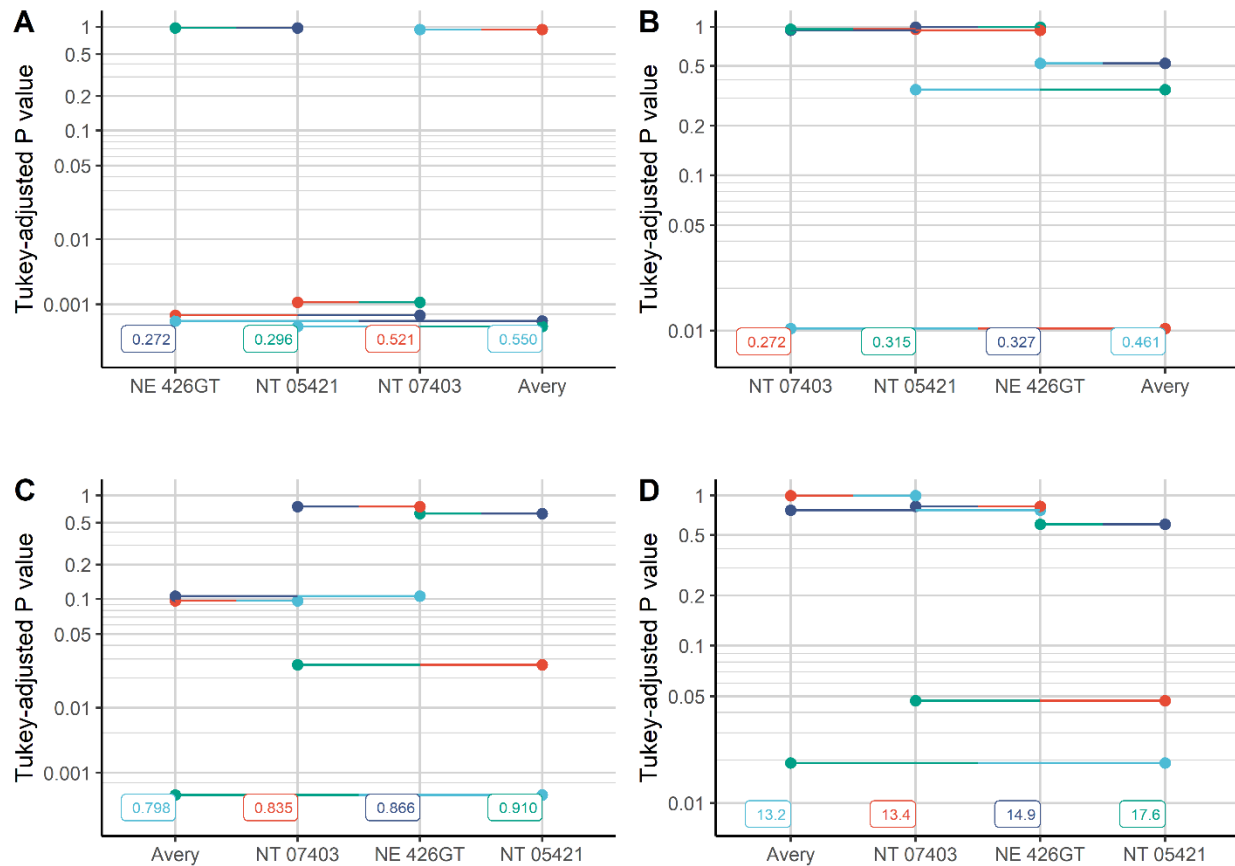


Supplementary Material

1 Supplementary Figures



Supplementary Figure 1. Estimated marginal means of the effects of triticale genotypes and wheat on the number of eggs laid in stems by the wheat stem sawfly. The pairwise p-value plot shows Tukey adjusted p-value comparisons. Each comparison is associated with a horizontal line segment that joins the scale positions of the two estimated marginal means being compared and whose vertical position is determined by the P-value of that comparison.



Supplementary Figure 2 A-D. Estimated marginal means of the effects (A) triticale genotypes and wheat on the proportion of stems infested with wheat stem sawfly, (B) on the proportion of stems that contained frass and were cut by the wheat stem sawfly, (C) on wheat stem sawfly larval weight, (D) on wheat stem sawfly larval head capsule length. The pairwise p-value plot shows Tukey adjusted p-value comparisons. Each comparison is associated with a horizontal line segment that joins the scale positions of the two estimated marginal means being compared and whose vertical position is determined by the P-value of that comparison.