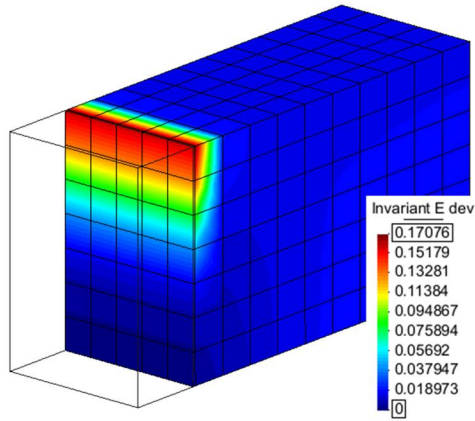
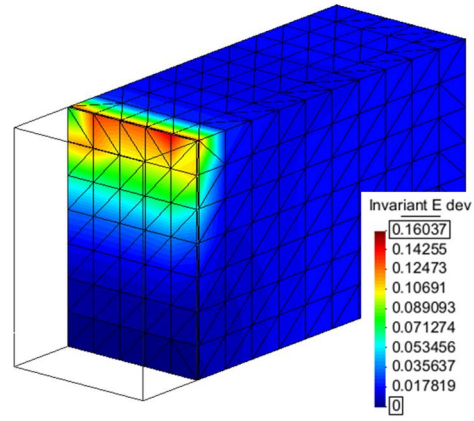


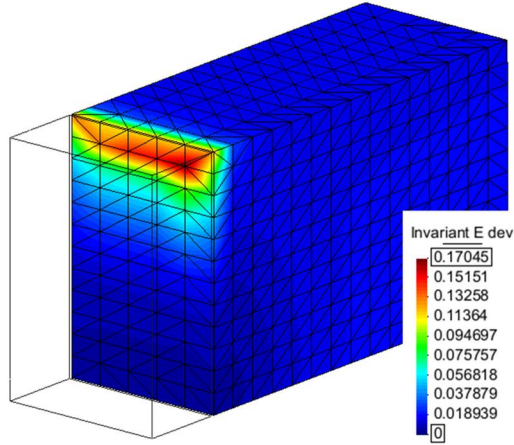
a) Hexahedron coarse mesh:



b) Tetrahedron structured-coarse mesh:



c) Tetrahedron structured-medium mesh:



d) Tetrahedron unstructured mesh:

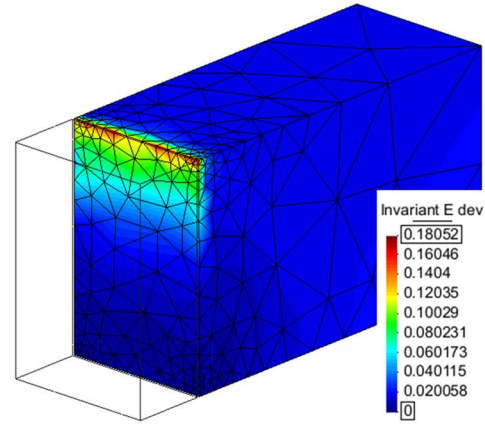


Figure S9: Total shear strains results for $q = 100$ kPa-surcharge at top of soil zone: (a) hexahedron structured-coarse mesh, (b) tetrahedron structured-coarse mesh, (c) tetrahedron structured-medium mesh, and (d) tetrahedron unstructured irregular-mesh. Cases with $t_i = 0.018$ m and $R_i = 0.8$.