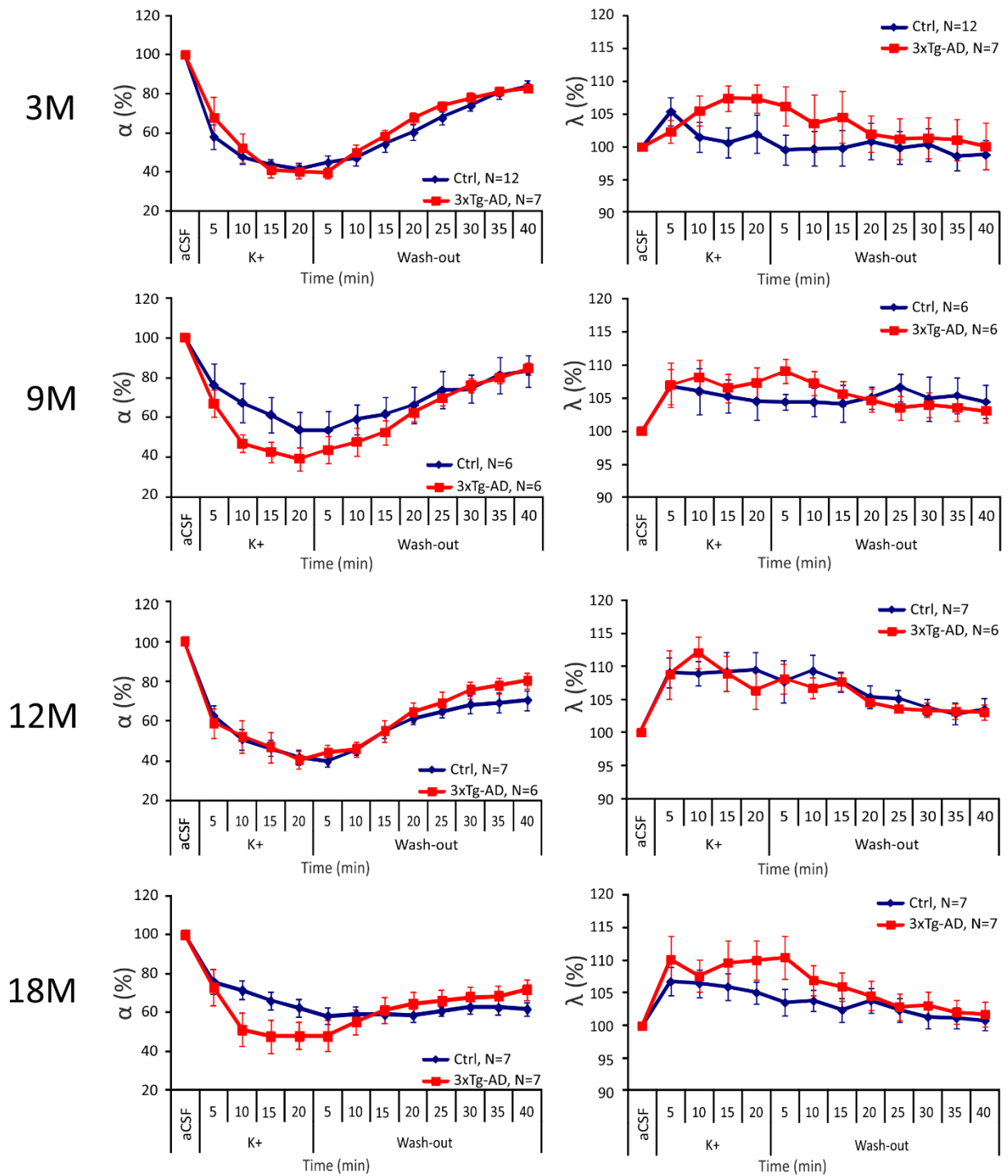


Hyperkalemia



Supplementary Fig. 3. Age-dependent changes of the relative values of the ECS diffusion parameters in control and 3xTg-AD mice evoked by severe hyperkalemia (50 mM K⁺). Left: Time course of the volume fraction (α) changes during a 20-min application of aCSF_{K⁺} and a 40-min washout in 3-, 9-, 12- and 18-month-old Ctrl animals and age-matched 3xTg-AD mice. Right: Time course of tortuosity (λ) changes during an aCSF_{K⁺} application and following washout in 3-, 9-, 12- and 18-month-old control animals and age-matched 3xTg-AD mice. To estimate the relative changes, the control values were set to 100%, and the relative changes were calculated and presented as mean \pm SEM. No significant

differences between Ctrl and age-matched 3xTg-AD mice in the relative values of the ECS diffusion parameters were detected.

Ctrl – control mice; 3xTg-AD – triple transgenic model of AD; 3M, 9M, 12M, 18M – 3-, 9-, 12-, 18-month-old animals; aCSF - artificial cerebrospinal fluid; K⁺ - artificial cerebrospinal fluid with 50 mM K⁺; N - number of animals.