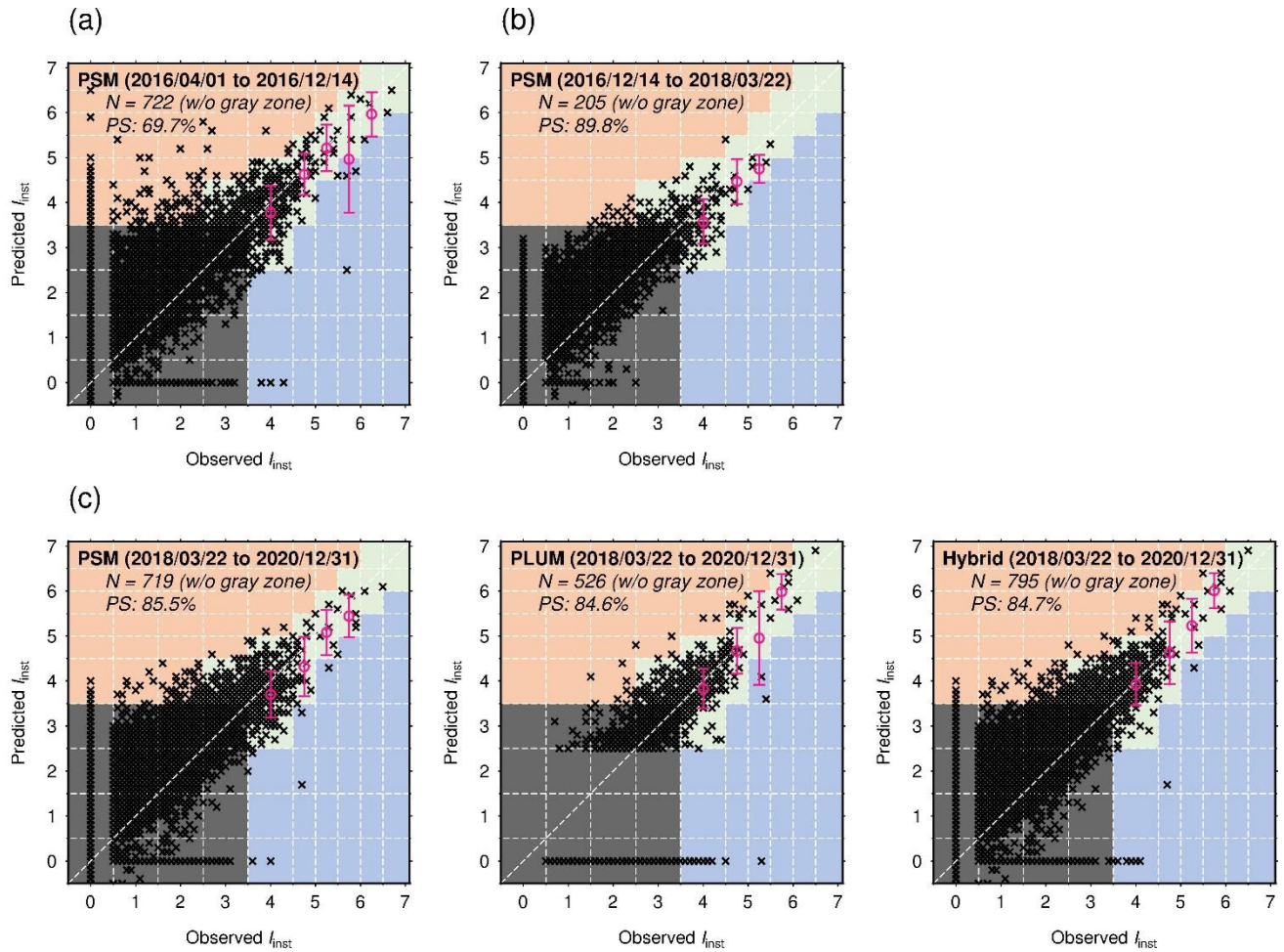
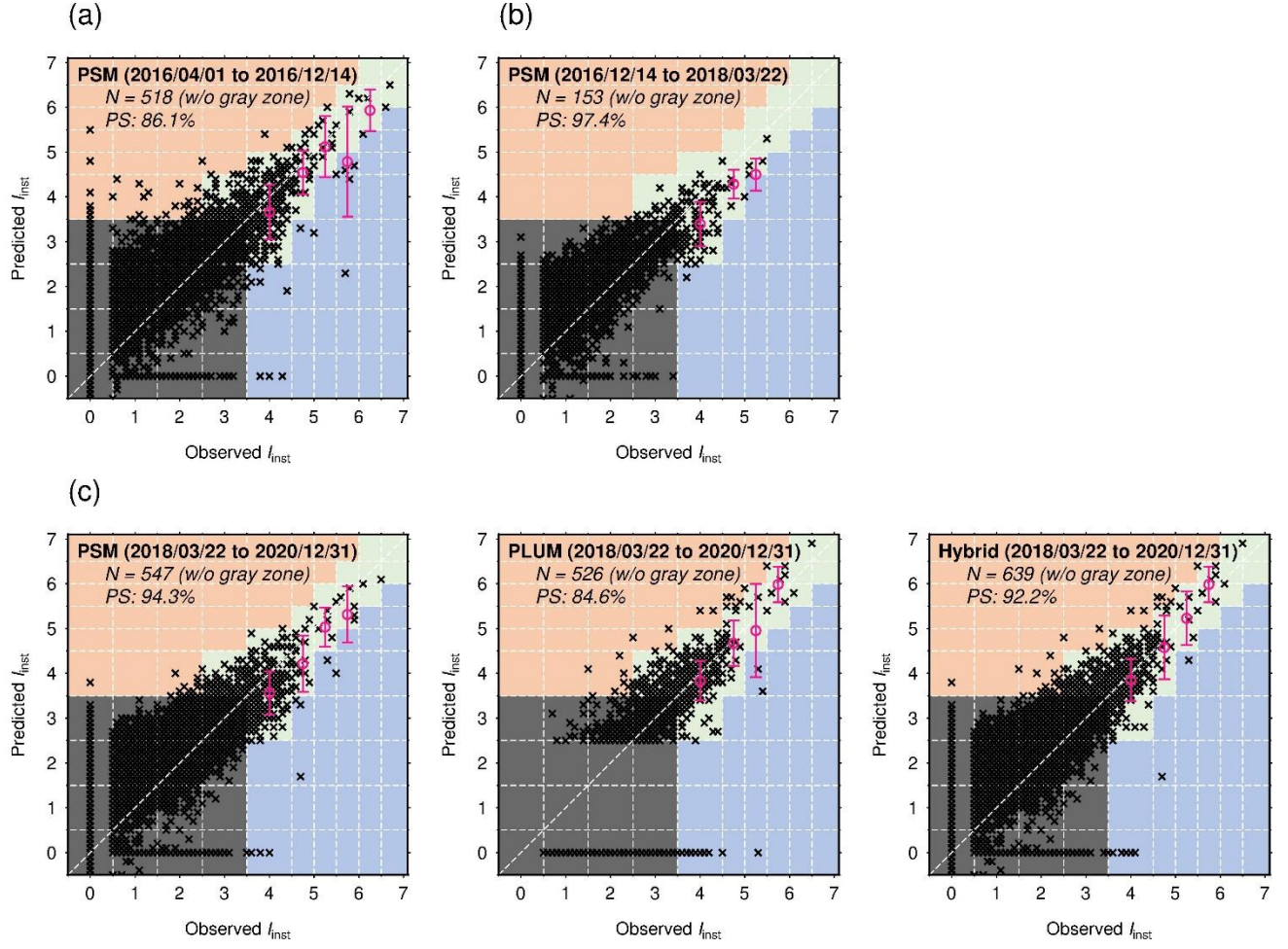


## Supplementary Material

### 1 Supplementary Figures



**Supplementary Figure 1.** The same figure as Fig. 3 but without the M4.5 and M4.0 events in January 2018 and the M6.0 earthquake near the Torishima island in July 2020.



**Supplementary Figure 2.** The same figure as Fig. 4 but without the M4.5 and M4.0 events in January 2018 and the M6.0 earthquake near the Torishima island in July 2020.