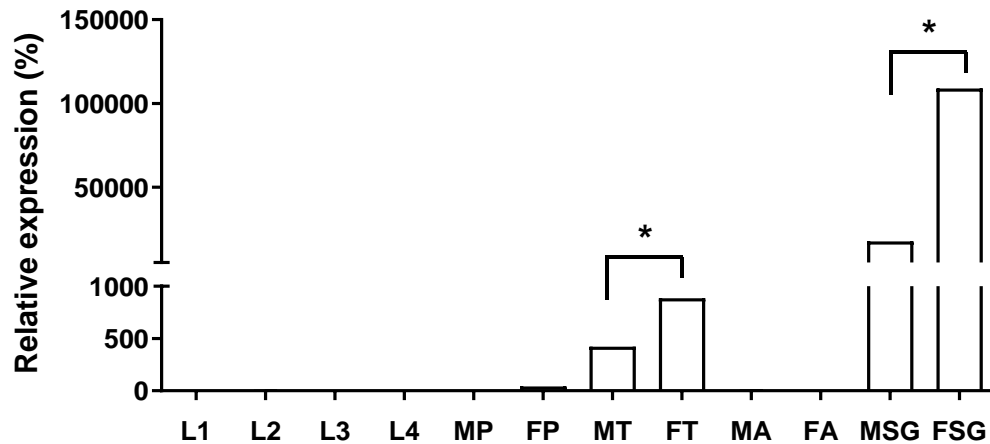
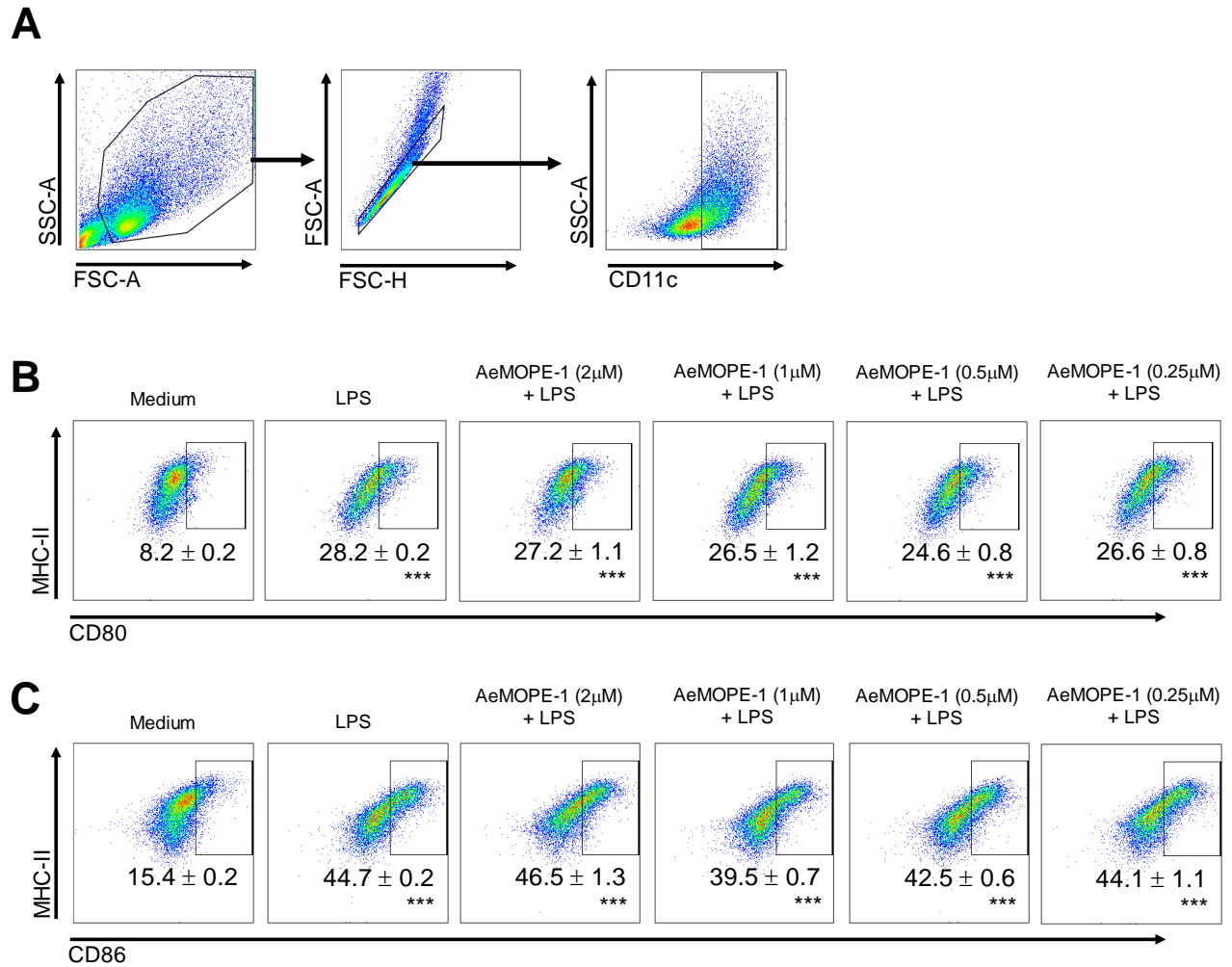


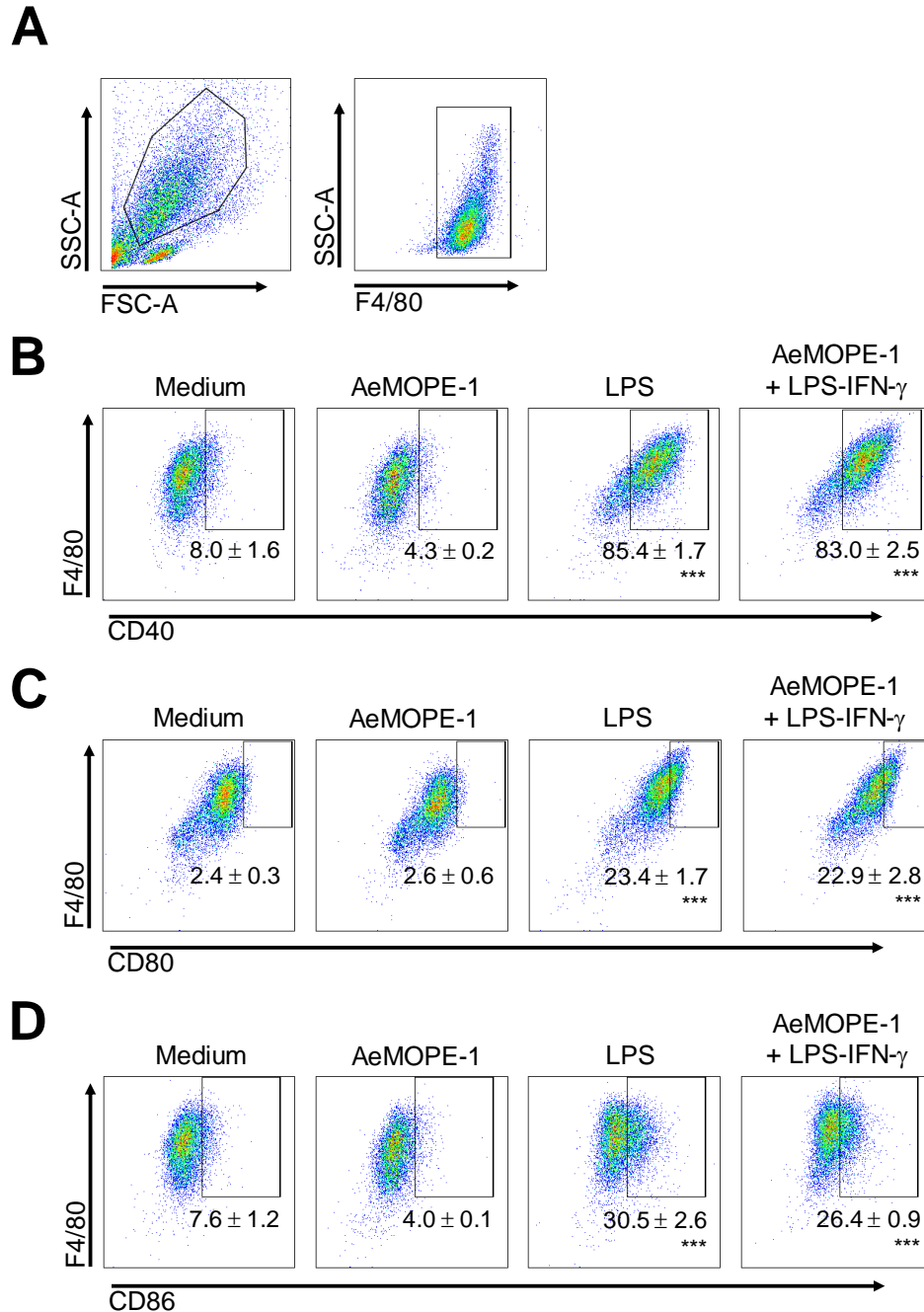
Supplementary Figures



Supplementary Figure 1. AeMOPE-1 gene expression profile in different stages and tissues of *Ae. aegypti*. Gene expression was determined in larval stages L1 to L4 (L1-L4), male pupae (MP), female pupae (FP), male thorax (MT), female thorax (FT), male abdomen (MA), female abdomen (FA), male salivary gland (MSG) and female salivary gland (FSG) by RT-qPCR. Values are expressed as the mean \pm SEM of $2^{-\Delta\Delta C_t}$ (n = 3). * $P \leq 0.05$ versus larval stage L1 - One-way ANOVA.



Supplementary Figure 2. Syn-AeMOPE-1 does not affect murine dendritic cell maturation. Bone marrow-derived dendritic cells were pre-incubated overnight with synthetic AeMOPE-1 (0.25 - 2 μM), stimulated with LPS (100 ng/mL) for 24 hours and the percentage of MHC class II⁺ CD80⁺ or MHC class II⁺ CD86⁺ cells were evaluated by flow cytometry. (A) Gating strategy. (B) CD80 expression in MHC class II⁺ cells. (C) CD86 expression in MHC class II⁺ cells. Results are expressed as the mean ± SEM from one representative experiment of four independent experiments assayed in quadruplicate. ****P* ≤ 0.001 versus unstimulated/untreated cells (Medium) – One-way ANOVA.



Supplementary Figure 3. Synthetic AeMOPE-1 does not affect the expression of accessory/costimulatory molecules by macrophages. Thioglycolate-elicited peritoneal macrophages were pre-incubated overnight with synthetic AeMOPE-1 (2 μ M), LPS+IFN- γ (10 ng/mL of each) for 24 hours and the percentage of F4/80⁺ CD40⁺, F4/80⁺ CD80⁺ and F4/80⁺ CD86⁺ cells were evaluated by flow cytometry. (A) Gating strategy. (B) CD80 expression in MHC class II⁺ cells. (C) CD86 expression in MHC class II⁺ cells. Results are expressed as the mean \pm SEM from one representative experiment of four independent experiments assayed in duplicate. *** $P \leq 0.001$ versus respective control group (Medium or AeMOPE-1) – One-way ANOVA.