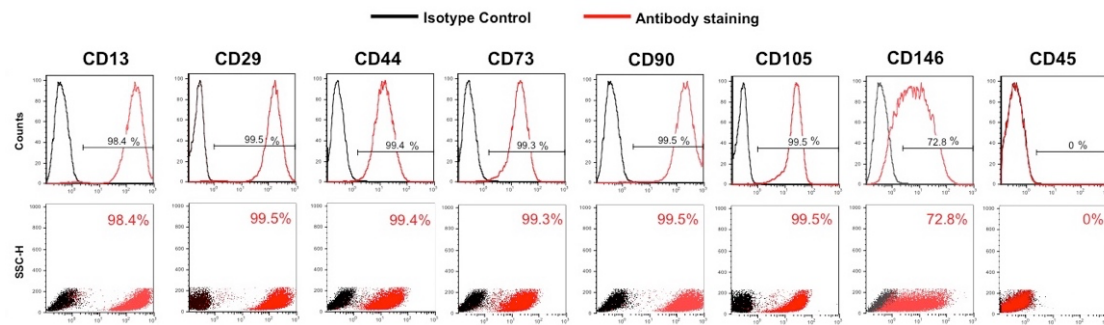
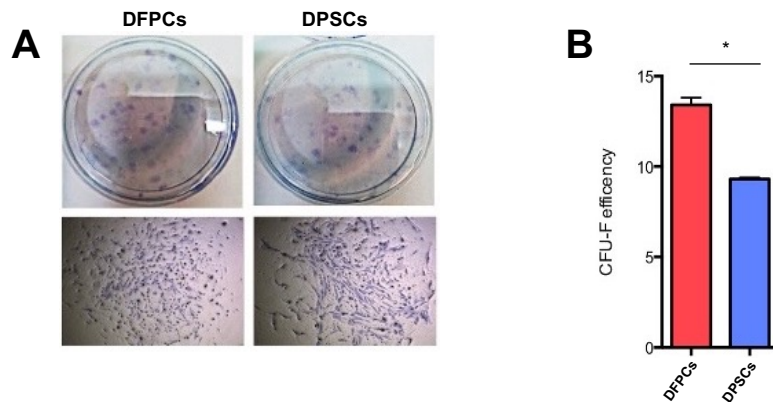


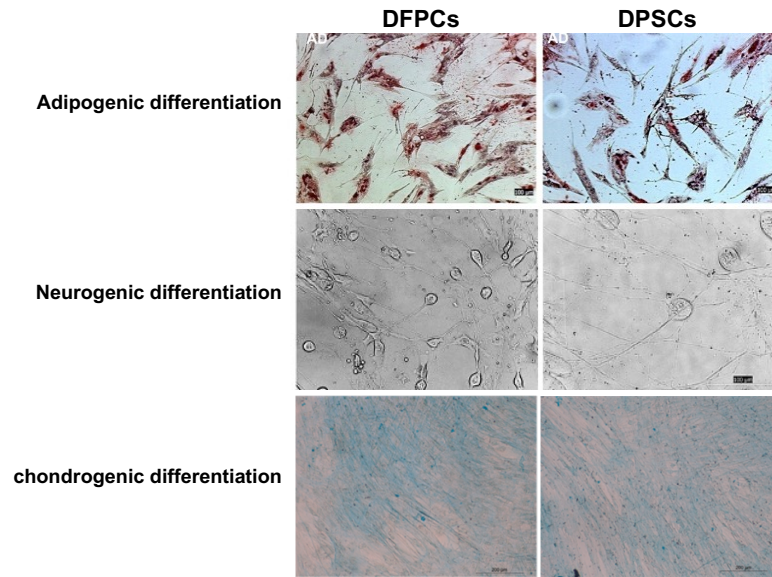
Supplementary Material



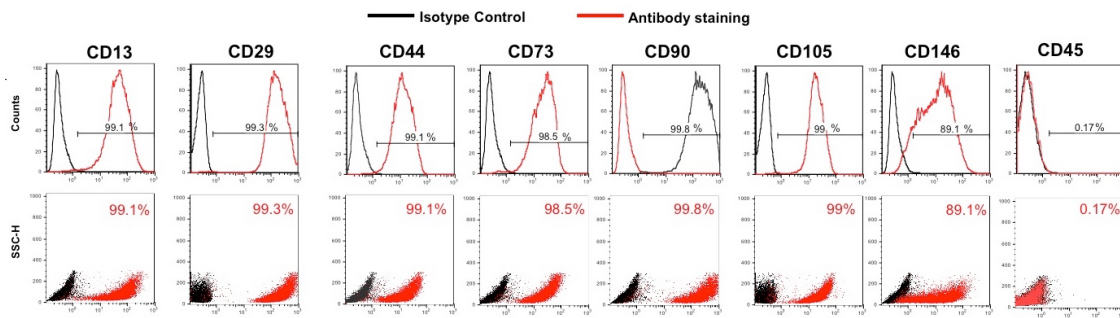
Supplementary Figure 1: Immunophenotype analysis of CD13, CD29, CD44, CD73, CD90, CD105, CD146 and CD45 expression in DFPCs at passage 2 by flow cytometry.



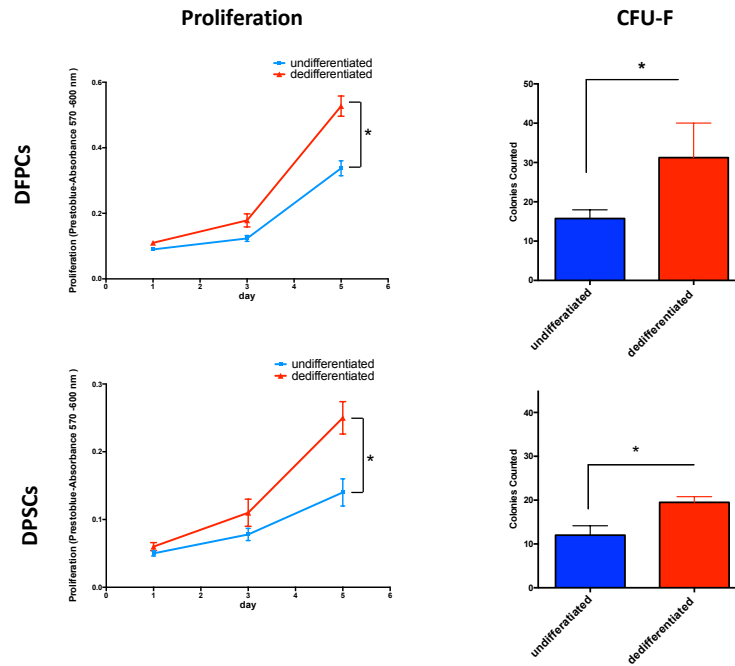
Supplementary Figure 2. Characterization of dental stem cells (DSCs): A) CFU-F (fibroblast colony-forming units). B) Quantification of CFU-F in DSCs.



Supplementary Figure 3: Multilineage differentiation potential of DFPCs and DPSCs.



Supplementary Figure 4: Immunophenotype analysis of CD13, CD29, CD44, CD73, CD90, CD105, CD146 and CD45 expression in DPSCs at passage 2 by flow cytometry.



Supplementary Figure 5: Cell proliferation assay and CFU-F assay for Dediff-DFPCs and Dediff-DPSCs. Values were indicated statistically significant when * $P < 0.05$.