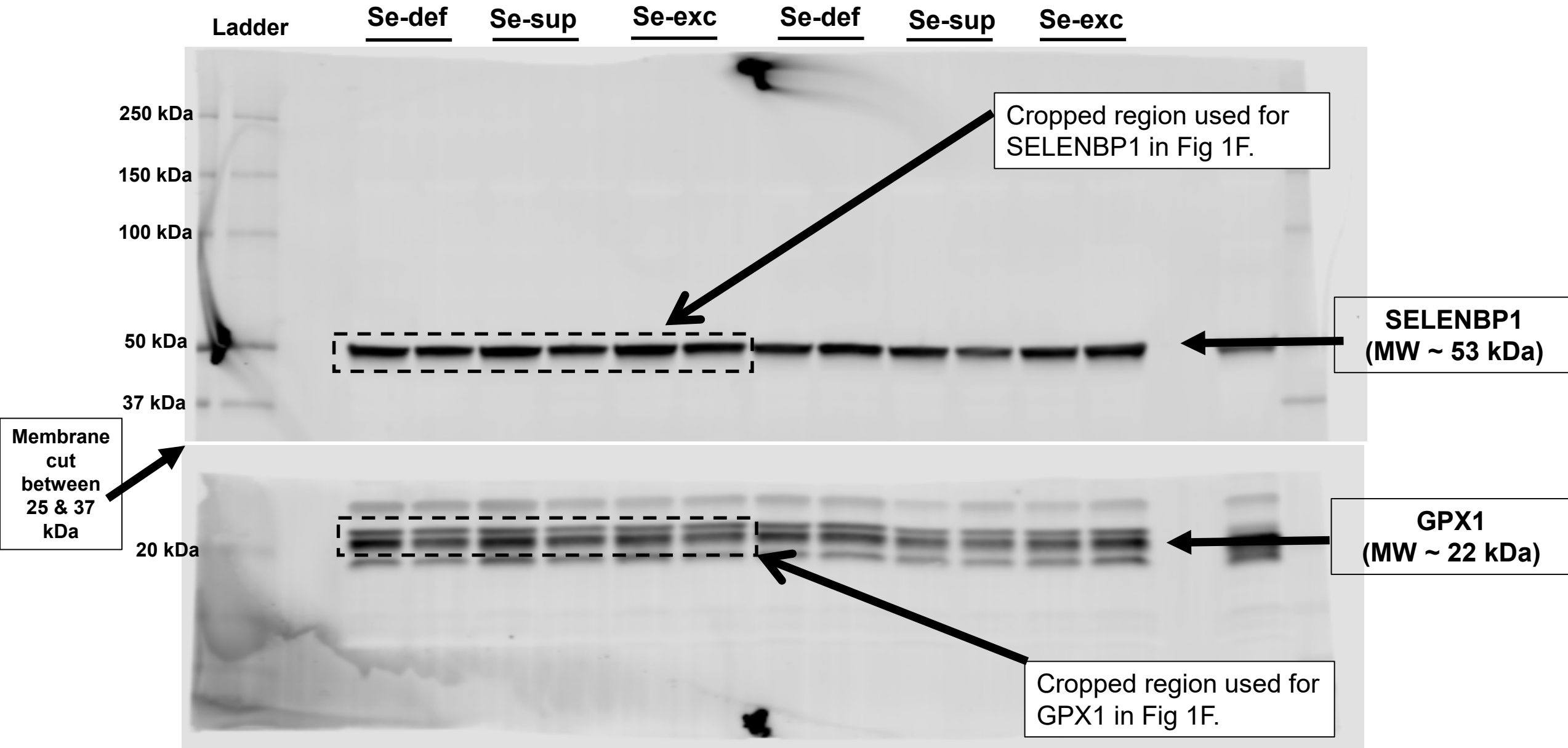
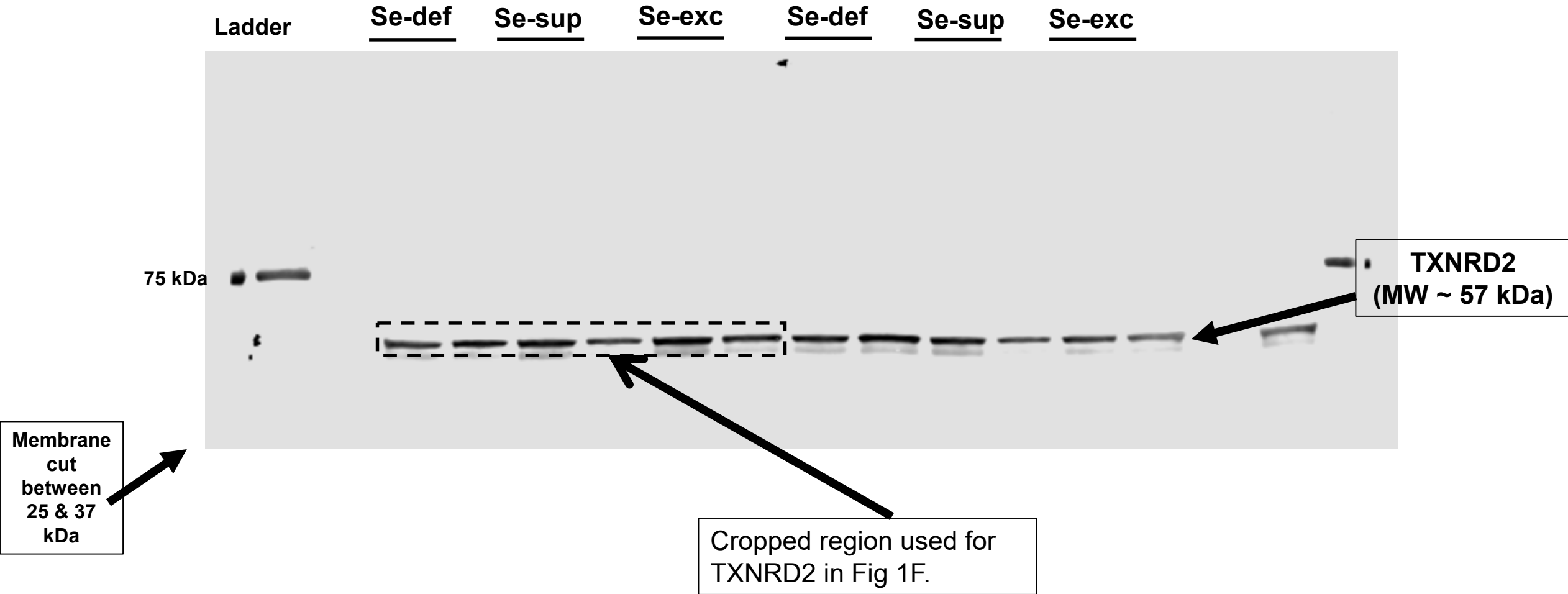


Full Blot for Figure 1F: Initial Probe



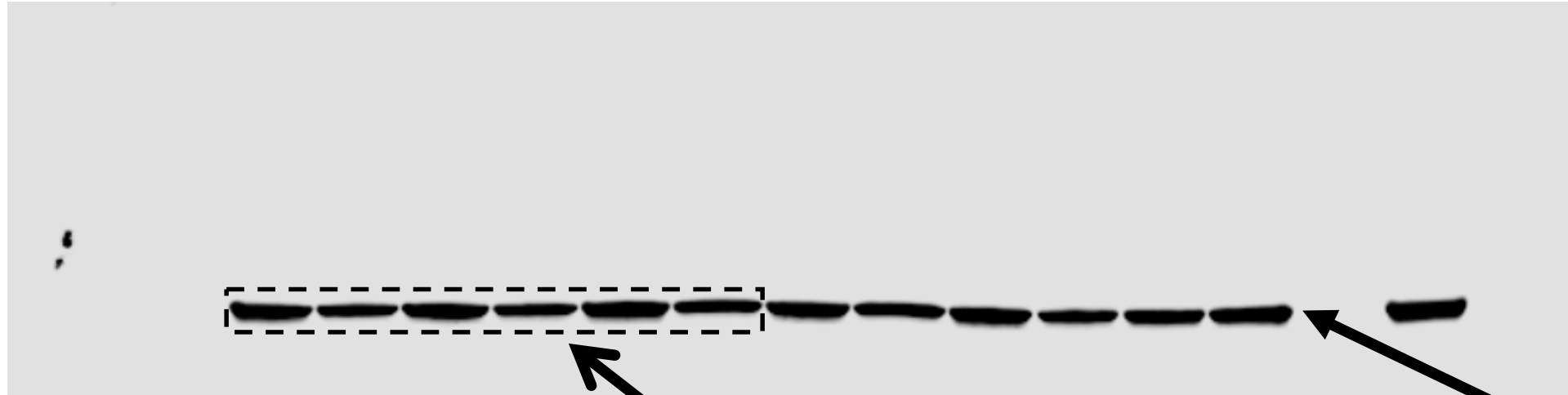
Full Blot for Figure 1F: Reprobe #1



NOTE: TXNRD2 was detected in the 800 channel of the Licor Odyssey System. Only the 75 kDa band of the ladder was visible in this detection channel.

Full Blot for Figure 1F: Reprobe #2

Ladder Se-def Se-sup Se-exc Se-def Se-sup Se-exc



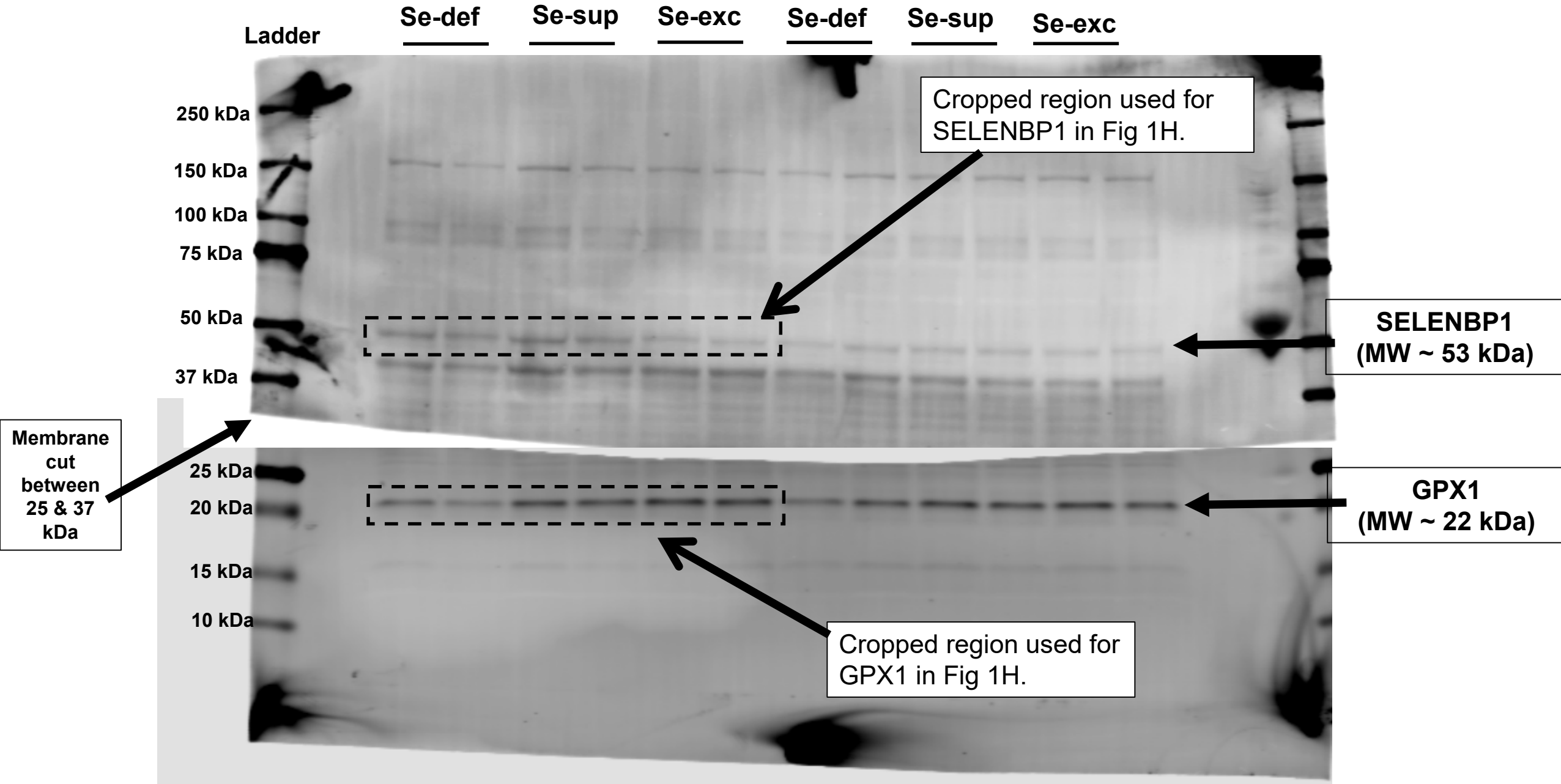
Membrane
cut
between
25 & 37
kDa

Cropped region used for
 β -actin in Fig 1F.

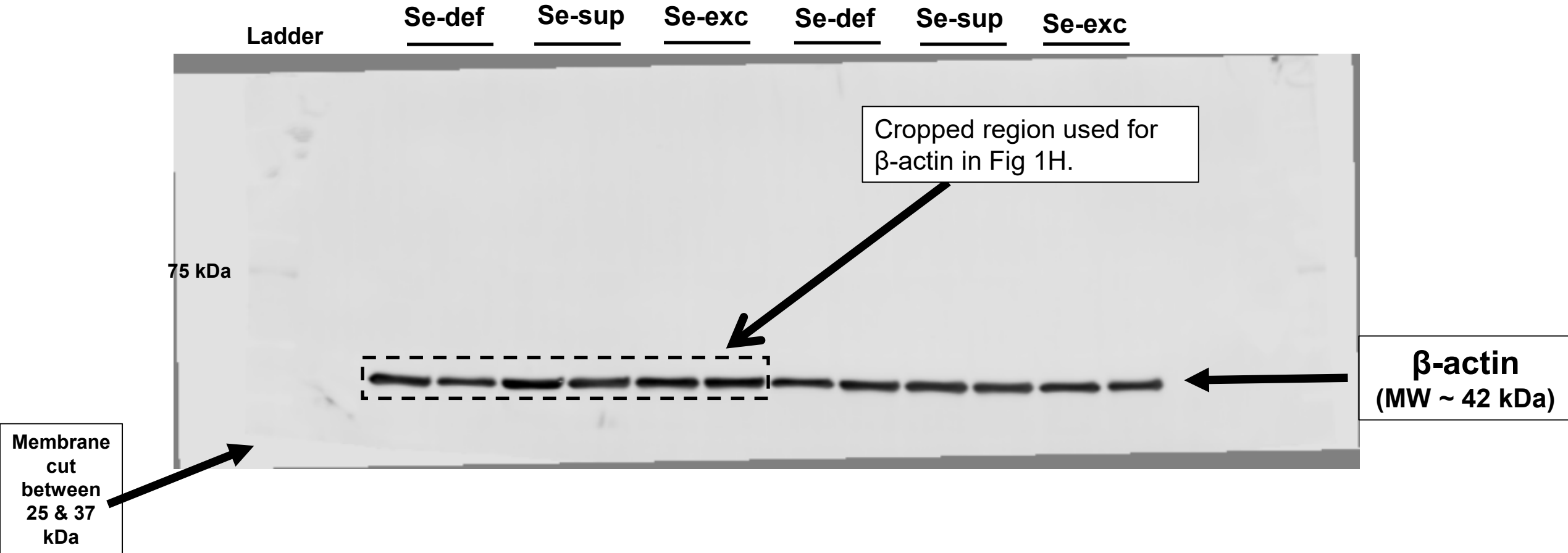
β -actin
(MW ~ 42 kDa)

NOTE: β -actin was detected in the 800 channel of the Licor Odyssey System. Due to the intense signal of β -actin, the 75 kDa band of the ladder was not visible unless the signal was increased.

Full Blot for Figure 1H: Initial Probe (680 channel)



Full Blot for Figure 1H: Initial Probe (800 channel)



NOTE: β -actin was detected in the 800 channel of the Licor Odyssey System. Due to the intense signal of β -actin, the 75 kDa band of the ladder was barely visible.

Full Blot for Figure 1H: Reprobe #1

