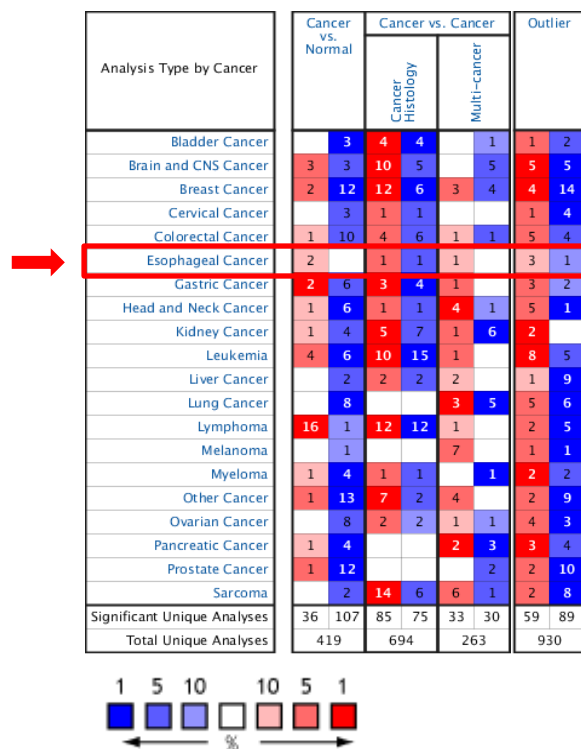


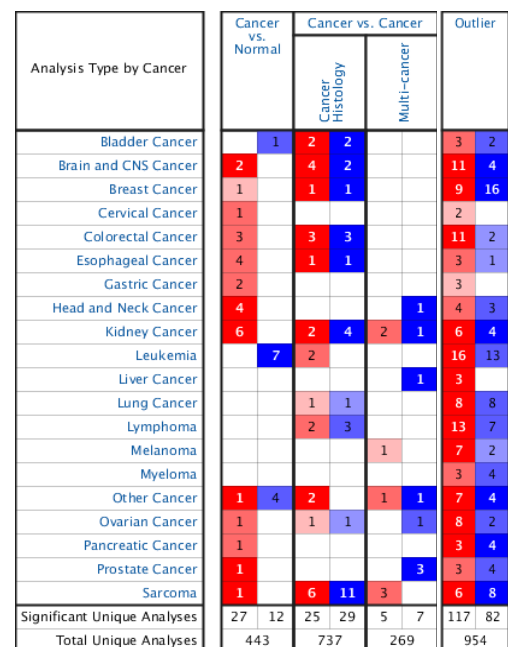
Supplementary Material

Supplementary Figures

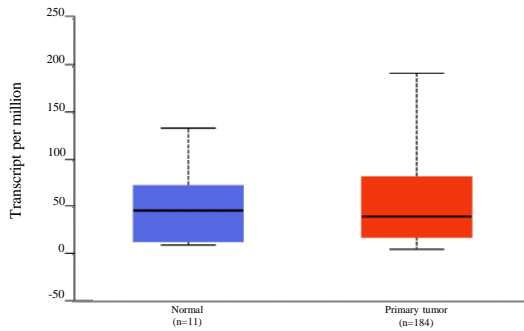
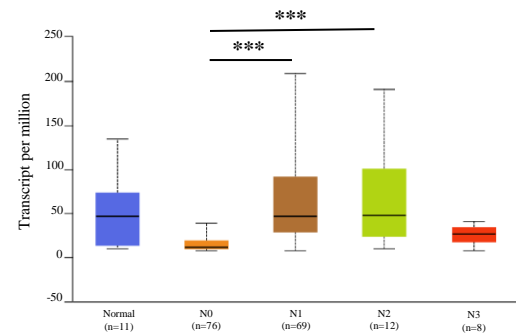
A



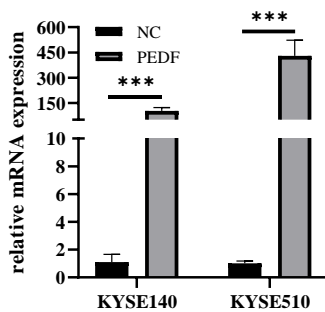
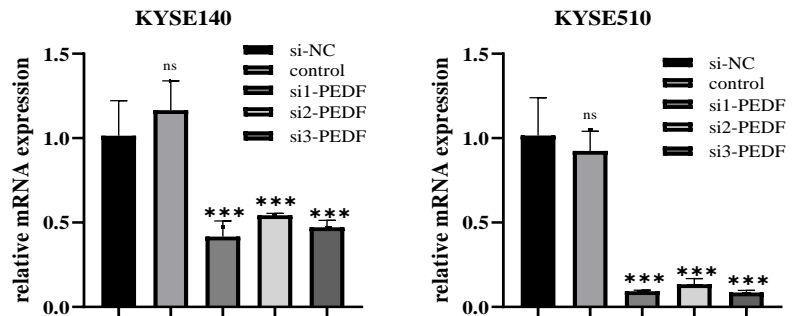
B



Supplementary Figure 1. The mRNA expression patterns of PEDF and TNFAIP6 in different types of human cancer. A. Transcriptional expression of PEDF in 20 different types of cancer diseases (ONCOMINE database). B. Transcriptional expression of TNFAIP6 in 20 different types of cancer diseases (ONCOMINE database).

A**B**

Supplementary Figure 2. Analysis of the level of PEDF mRNA expression in esophageal tissues based on the TCGA databases. A. The relative expression of PEDF in ESCC and normal tissues. B. The obvious correlation between N stages (metastatic lymph nodes) and PEDF expression levels. *** $P < 0.001$.

A**B**

Supplementary Figure 3. The expression of PEDF mRNA in each cell line after overexpression or interference. A-B. Relative expression of PEDF mRNA was measured by qRT-PCR in ESCC cells transfected with PEDF overexpression plasmid and si-PEDF.