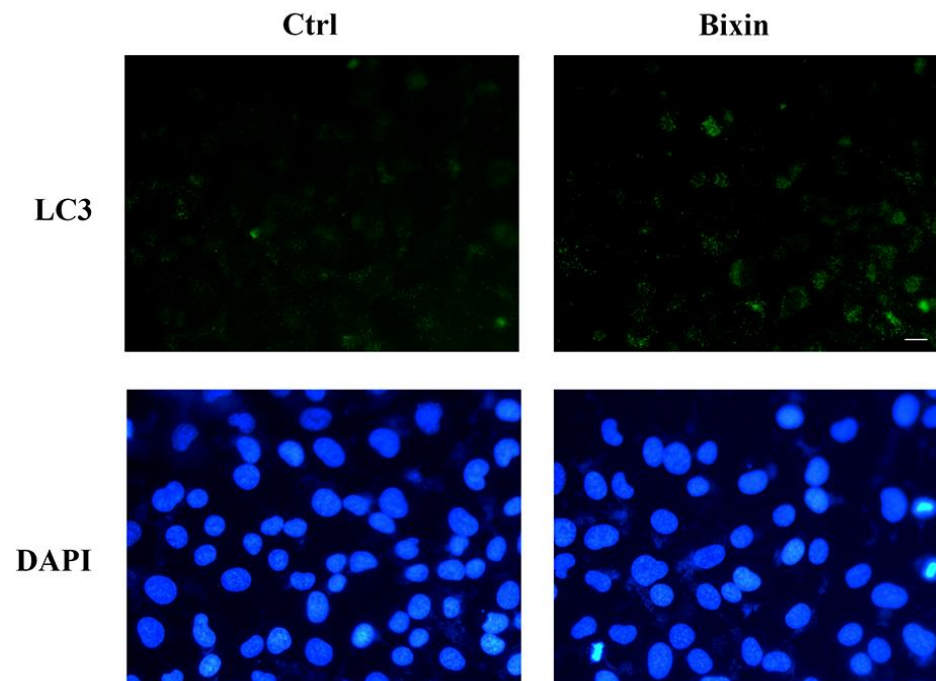


Supplemental Figure 1



Supplemental Figure Legend

Supplemental Figure 1. Bixin induces the autophagy. (A) After treated with bixin (40 μ M) for 24 h, HK2 cells were fixed and subjected to indirect immunofluorescence staining of LC3 (green); nucleus were stained with DAPI (the representative images were shown, scale bar = 100 μ m).