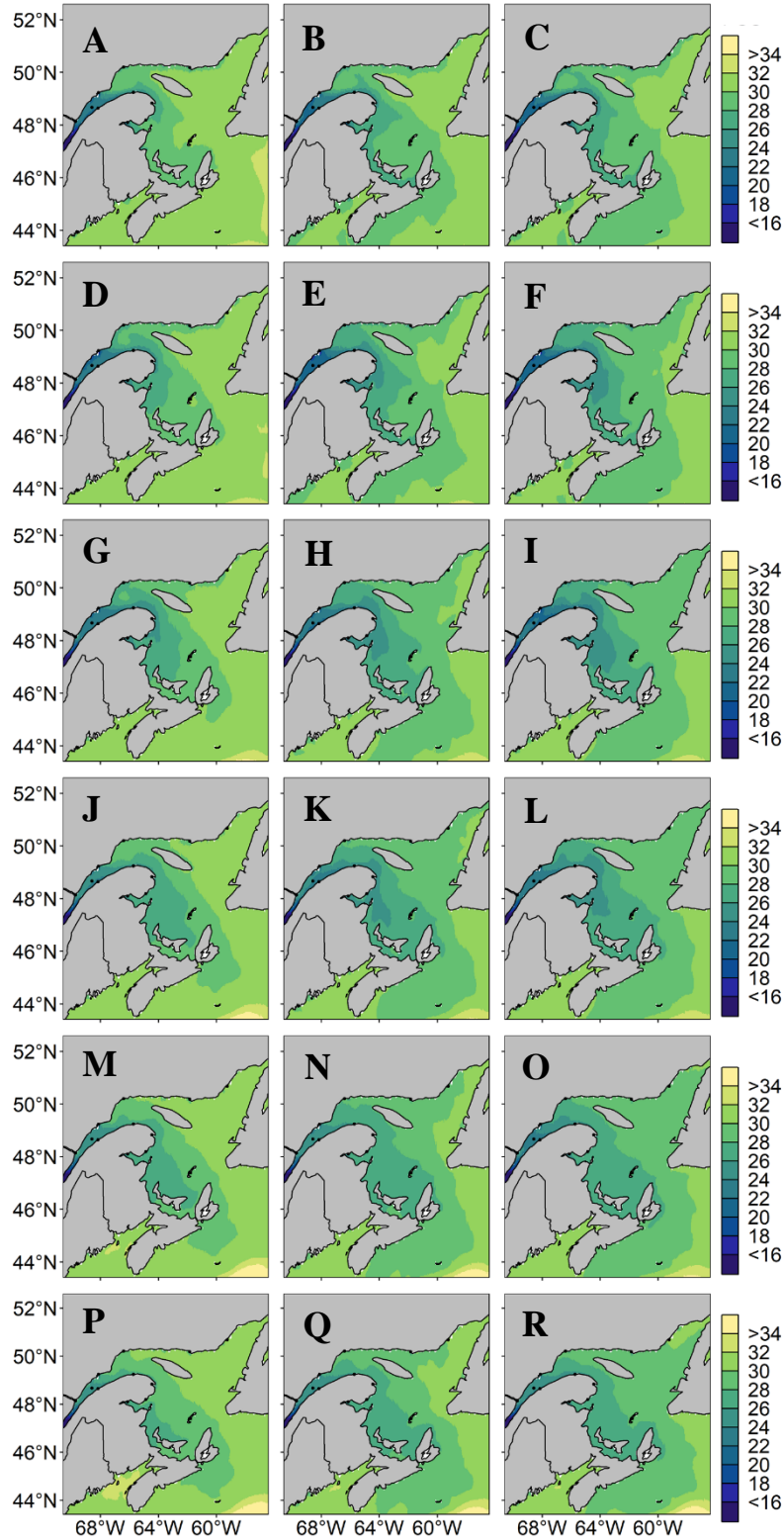
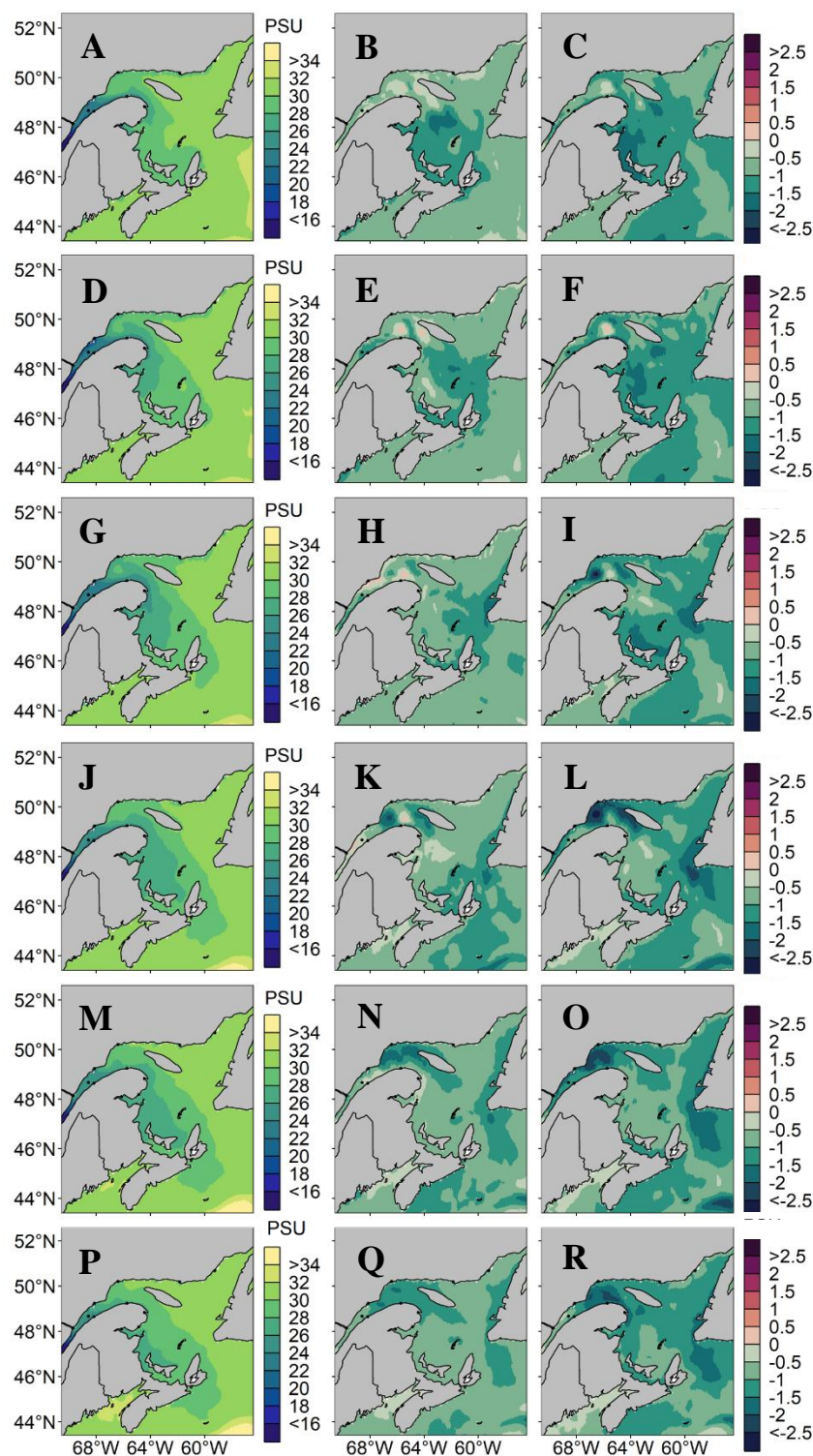


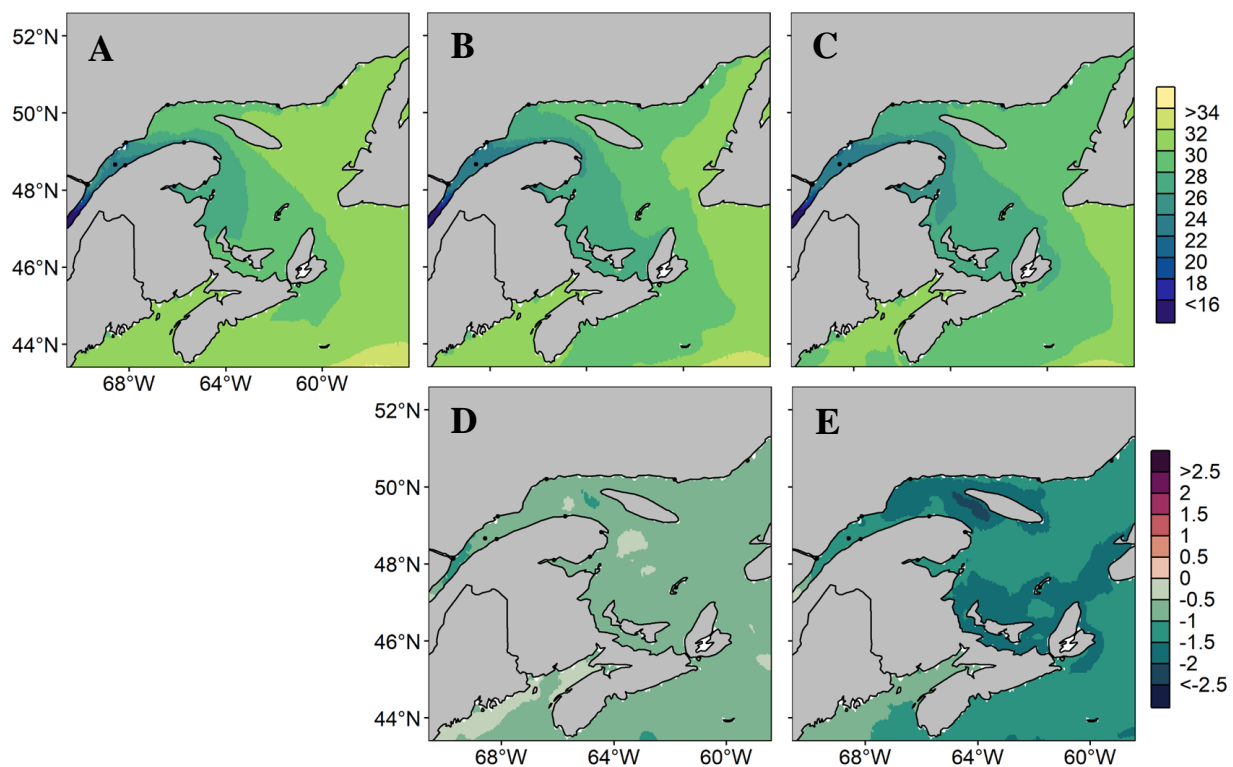
Supplementary Figure S1. Average sea surface salinity from May through October along Canada's East Coast under MPI-ESM-LR RCP 4.5 for (A) 1999-2008, (B) 2050-2059 and (C) 2090-2099 and difference in average sea surface salinity between (D) 1999-2008 and 2050-2059 and (E) 1999-2008 and 2090-2099.



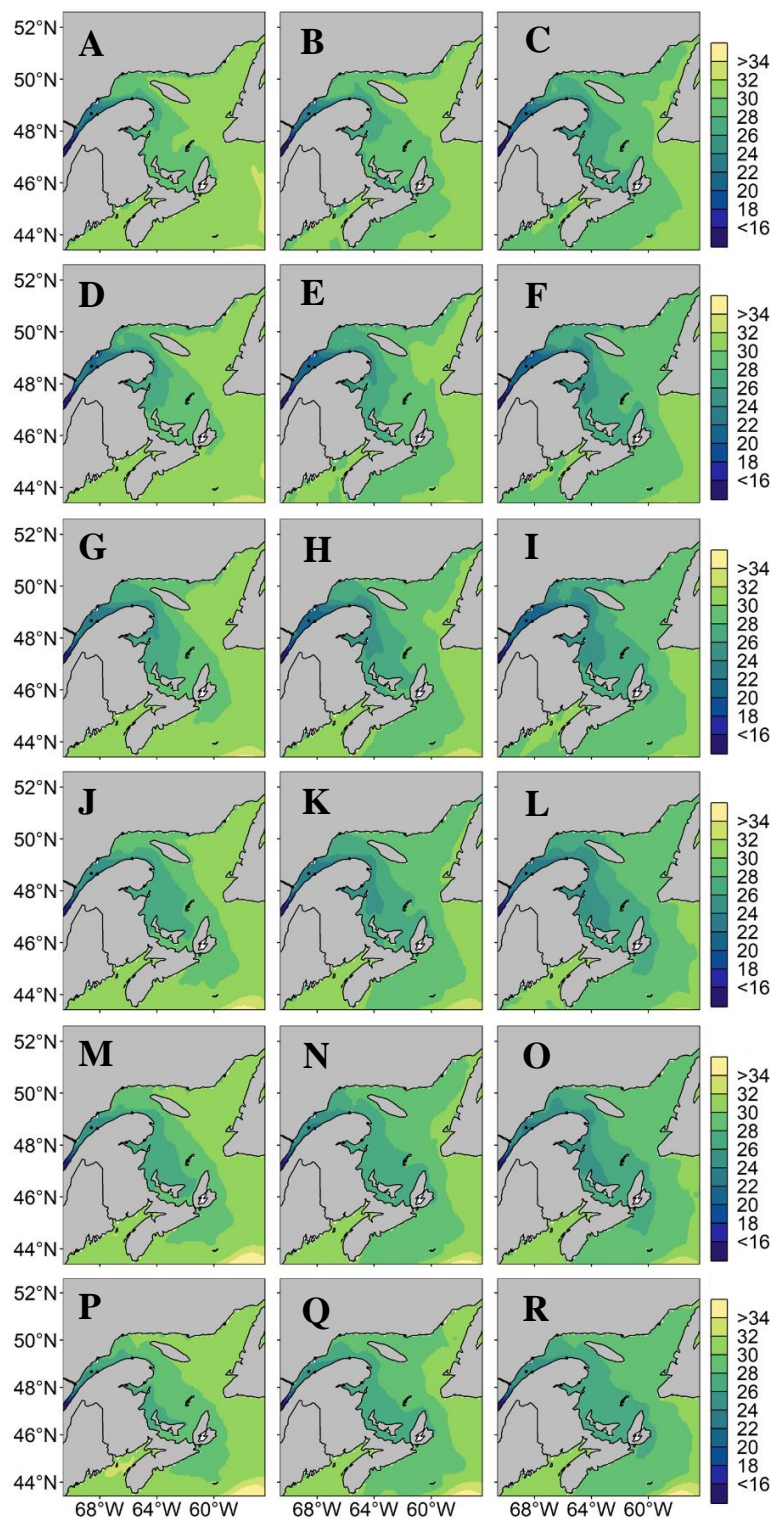
Supplementary Figure S2. Average sea surface salinity along Canada's East Coast under MPI-ESM-LR RCP 4.5 for (A) May 1999-2008, (B) May 2050-2059 and (C) May 2090-2099. Same pattern applies for (D-F) June, (G-I) July, (J-L) August, (M-O) September and (P-R) October.



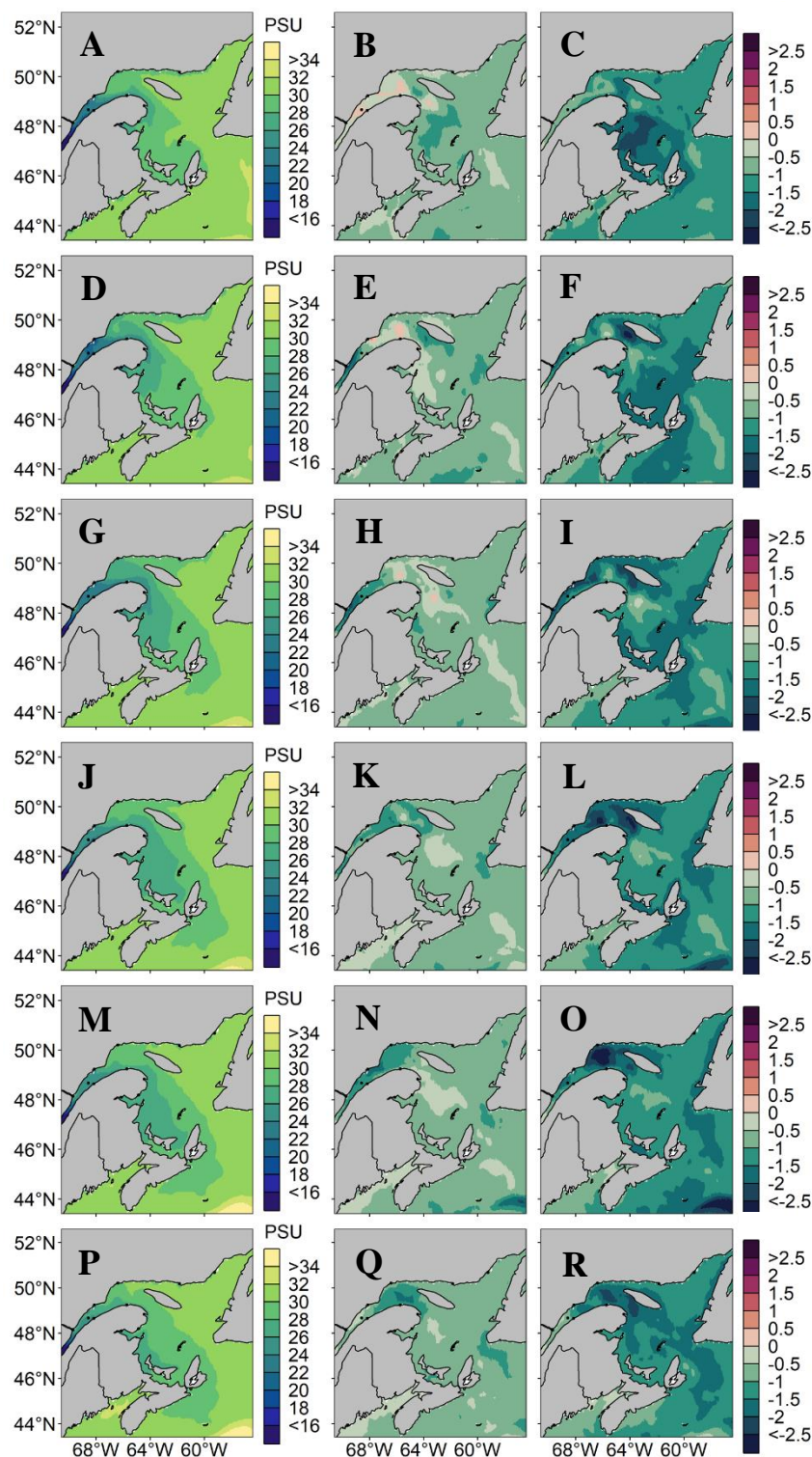
Supplementary Figure S3. Average sea surface salinity along Canada's East Coast under MPI-ESM-LR RCP 4.5 for (A) May 1999-2008, (B) difference in average sea surface salinity between May 1999-2008 and 2050-2059 and (C) difference in average sea surface salinity between May 1999-2008 and 2090-2099. Same pattern applies for (D-F) June, (G-I) July, (J-L) August, (M-O) September and (P-R) October.



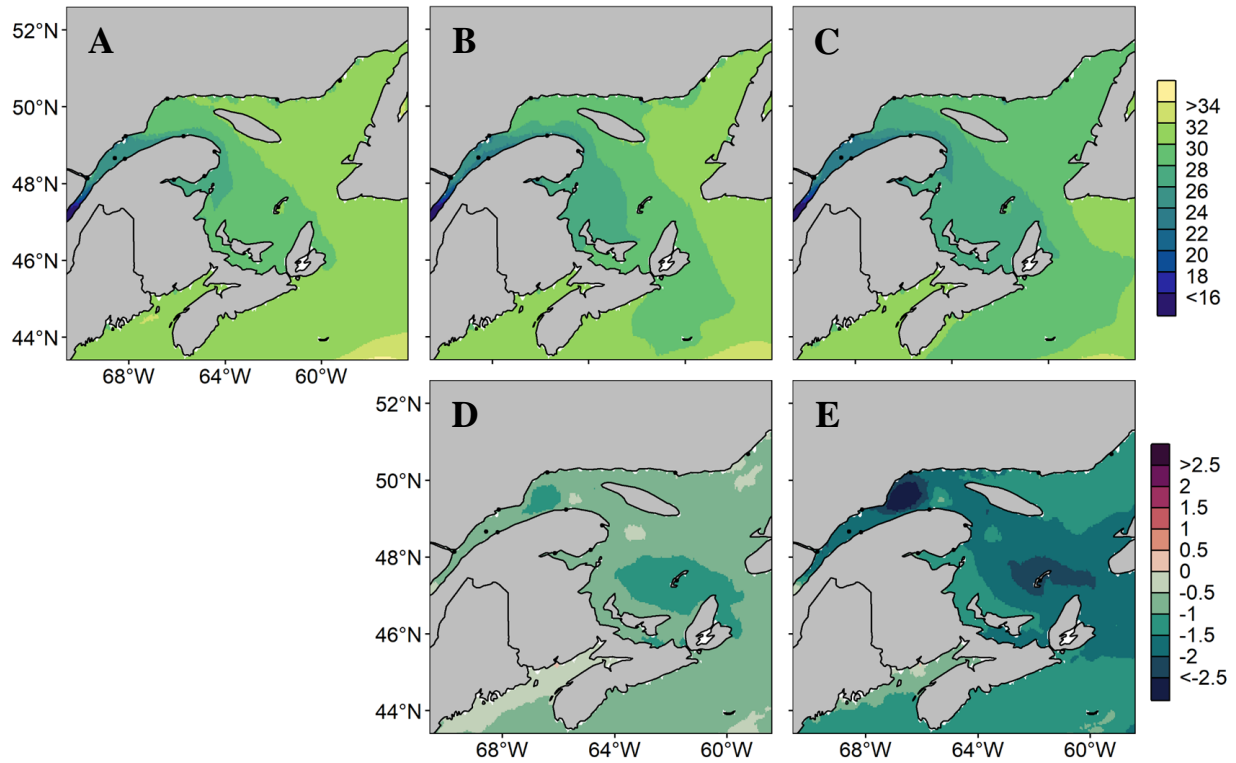
Supplementary Figure S4. Average sea surface salinity from May through October along Canada's East Coast under MPI-ESM-LR RCP 8.5 for (A) 1999-2008, (B) 2050-2059 and (C) 2090-2099 and difference in average sea surface salinity between (D) 1999-2008 and 2050-2059 and (E) 1999-2008 and 2090-2099.



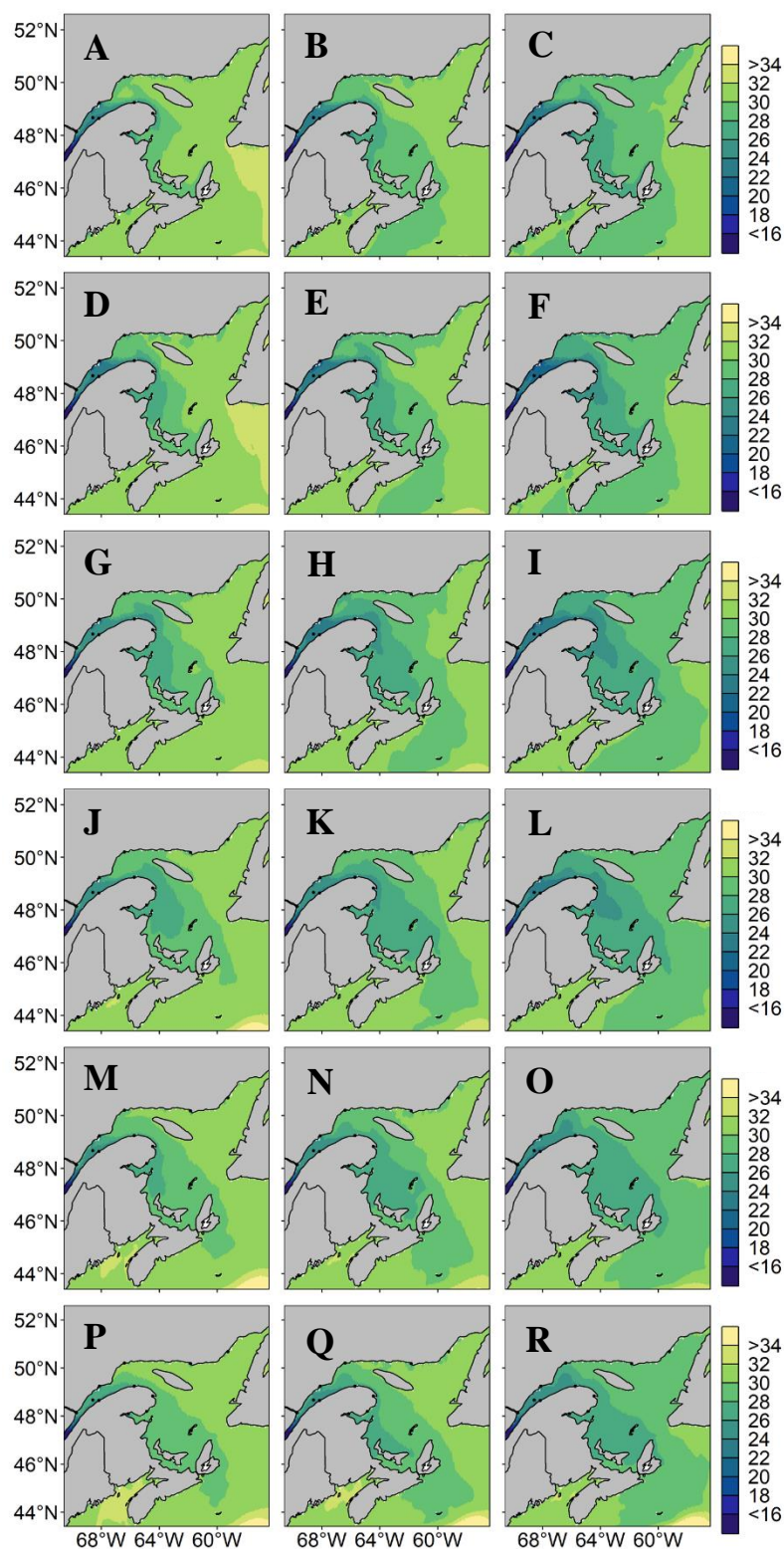
Supplementary Figure S5. Average sea surface salinity along Canada's East Coast under MPI-ESM-LR RCP 8.5 for (A) May 1999-2008, (B) May 2050-2059 and (C) May 2090-2099. Same pattern applies for (D-F) June, (G-I) July, (J-L) August, (M-O) September and (P-R) October.



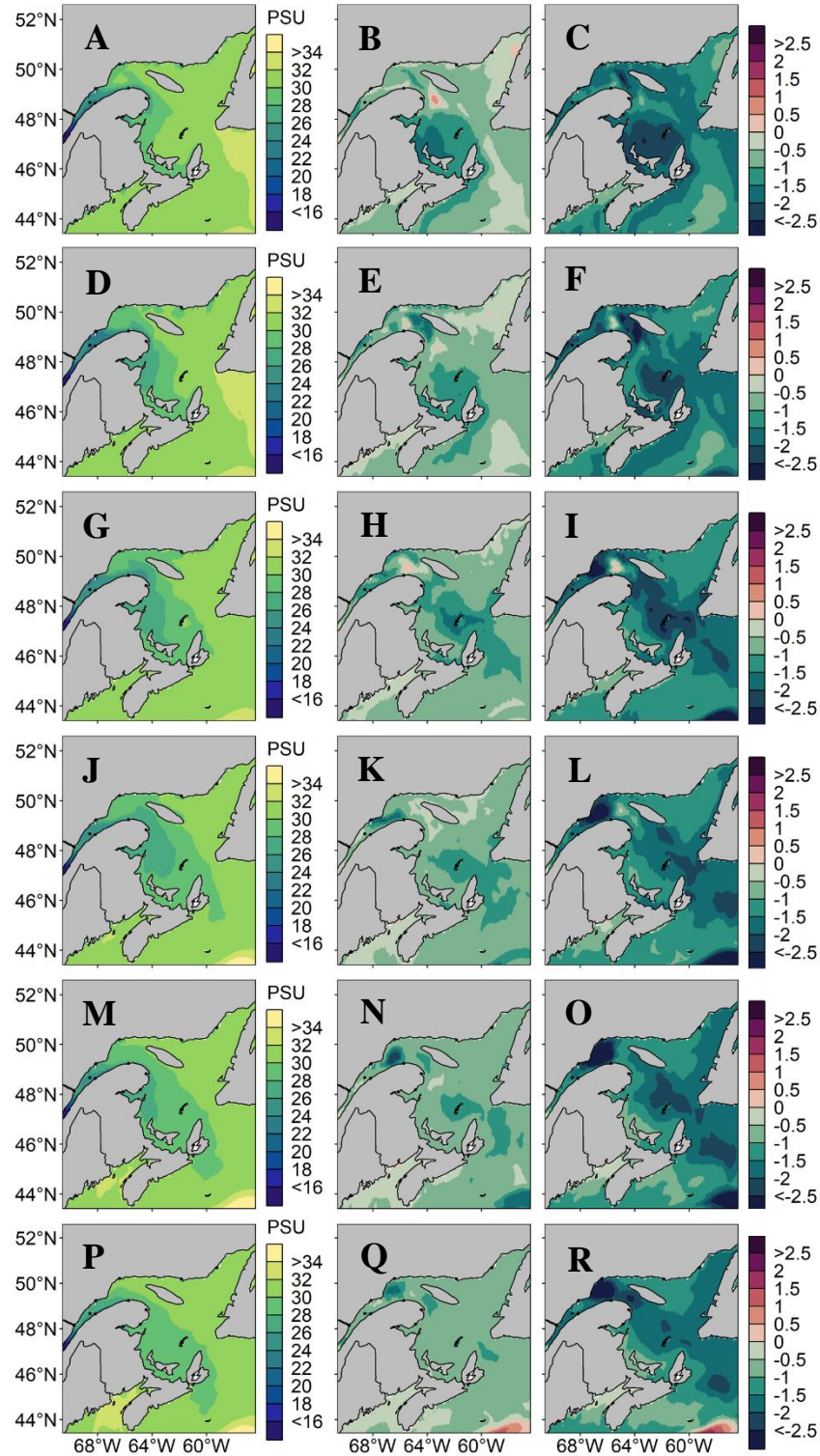
Supplementary Figure S6. Average sea surface salinity along Canada's East Coast under MPI-ESM-LR RCP 8.5 for (A) May 1999-2008, (B) difference in average sea surface salinity between May 1999-2008 and 2050-2059 and (C) difference in average sea surface salinity between May 1999-2008 and 2090-2099. Same pattern applies for (D-F) June, (G-I) July, (J-L) August, (M-O) September and (P-R) October.



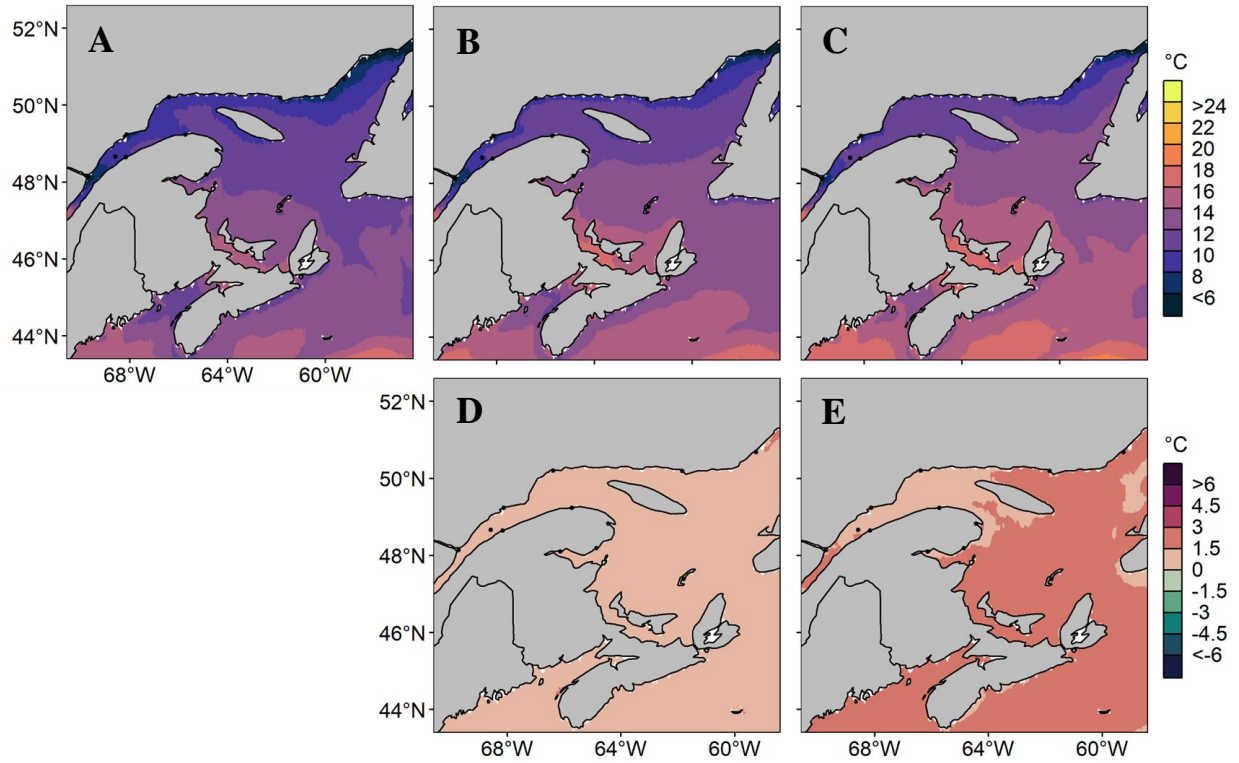
Supplementary Figure S7. Average sea surface salinity from May through October along Canada's East Coast under CanESM2 RCP 8.5 for (A) 1999-2008, (B) 2050-2059 and (C) 2090-2099 and difference in average sea surface salinity between (D) 1999-2008 and 2050-2059 and (E) 1999-2008 and 2090-2099.



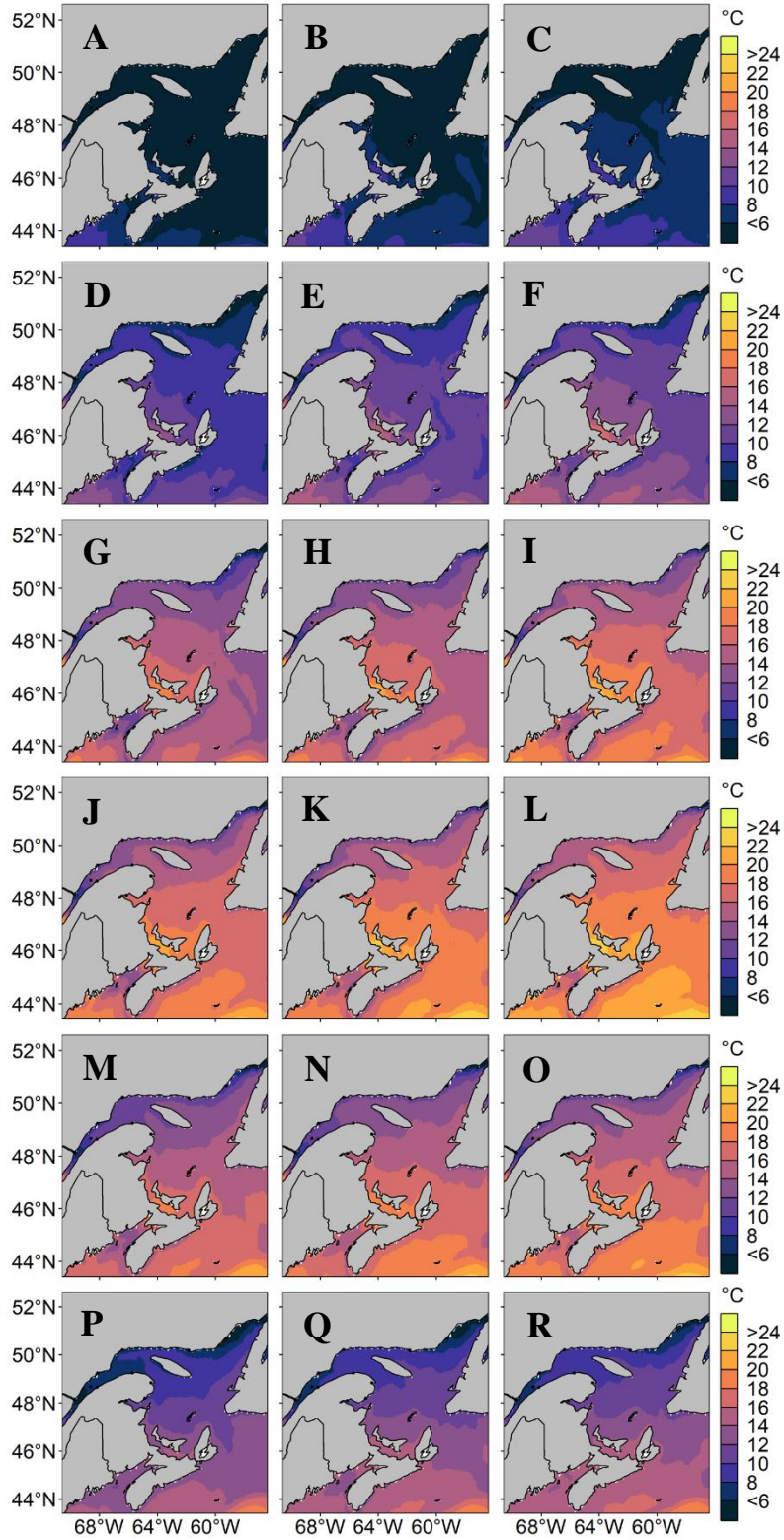
Supplementary Figure S8. Average sea surface salinity along Canada's East Coast under CanESM2 RCP 8.5 for (A) May 1999-2008, (B) May 2050-2059 and (C) May 2090-2099. Same pattern applies for (D-F) June, (G-I) July, (J-L) August, (M-O) September and (P-R) October.



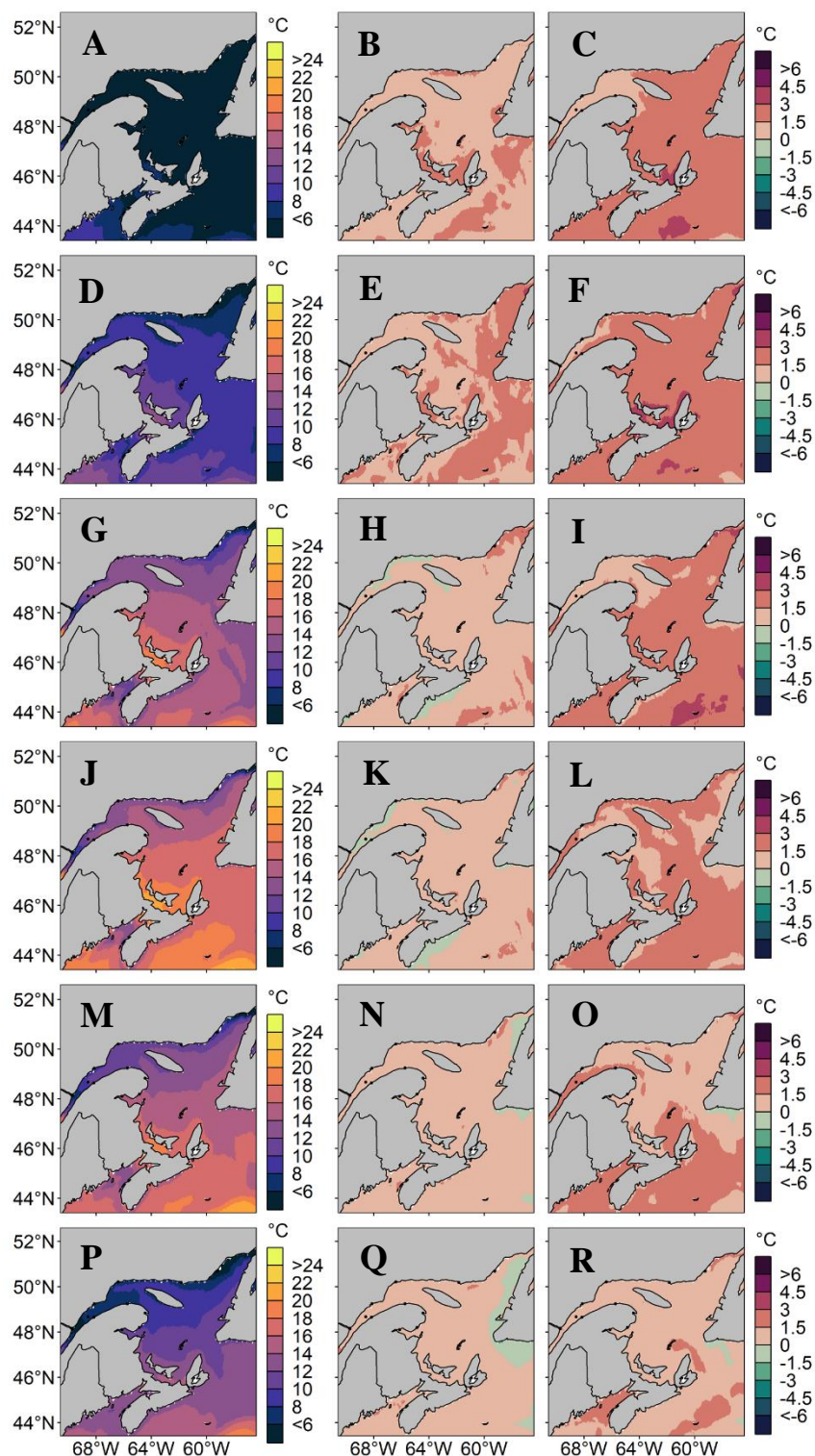
Supplementary Figure S9. Average sea surface salinity along Canada's East Coast under CanESM2 RCP 8.5 for (A) May 1999-2008, (B) difference in average sea surface salinity between May 1999-2008 and 2050-2059 and (C) difference in average sea surface salinity between May 1999-2008 and 2090-2099. Same pattern applies for (D-F) June, (G-I) July, (J-L) August, (M-O) September and (P-R) October.



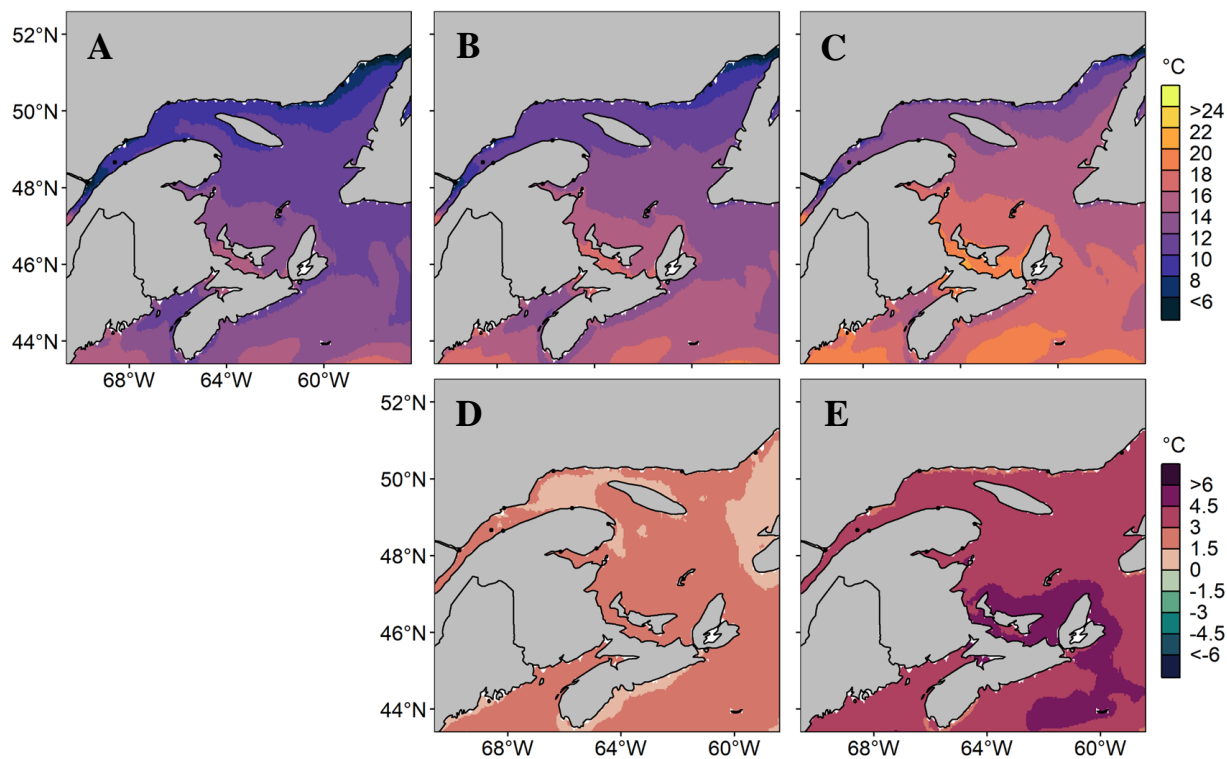
Supplementary Figure S10. Average sea surface temperature (°C) from May through October along Canada's East Coast under MPI-ESM-LR RCP 4.5 for (A) 1999-2008, (B) 2050-2059 and (C) 2090-2099 and difference in average sea surface temperature between (D) 1999-2008 and 2050-2059 and (E) 1999-2008 and 2090-2099.



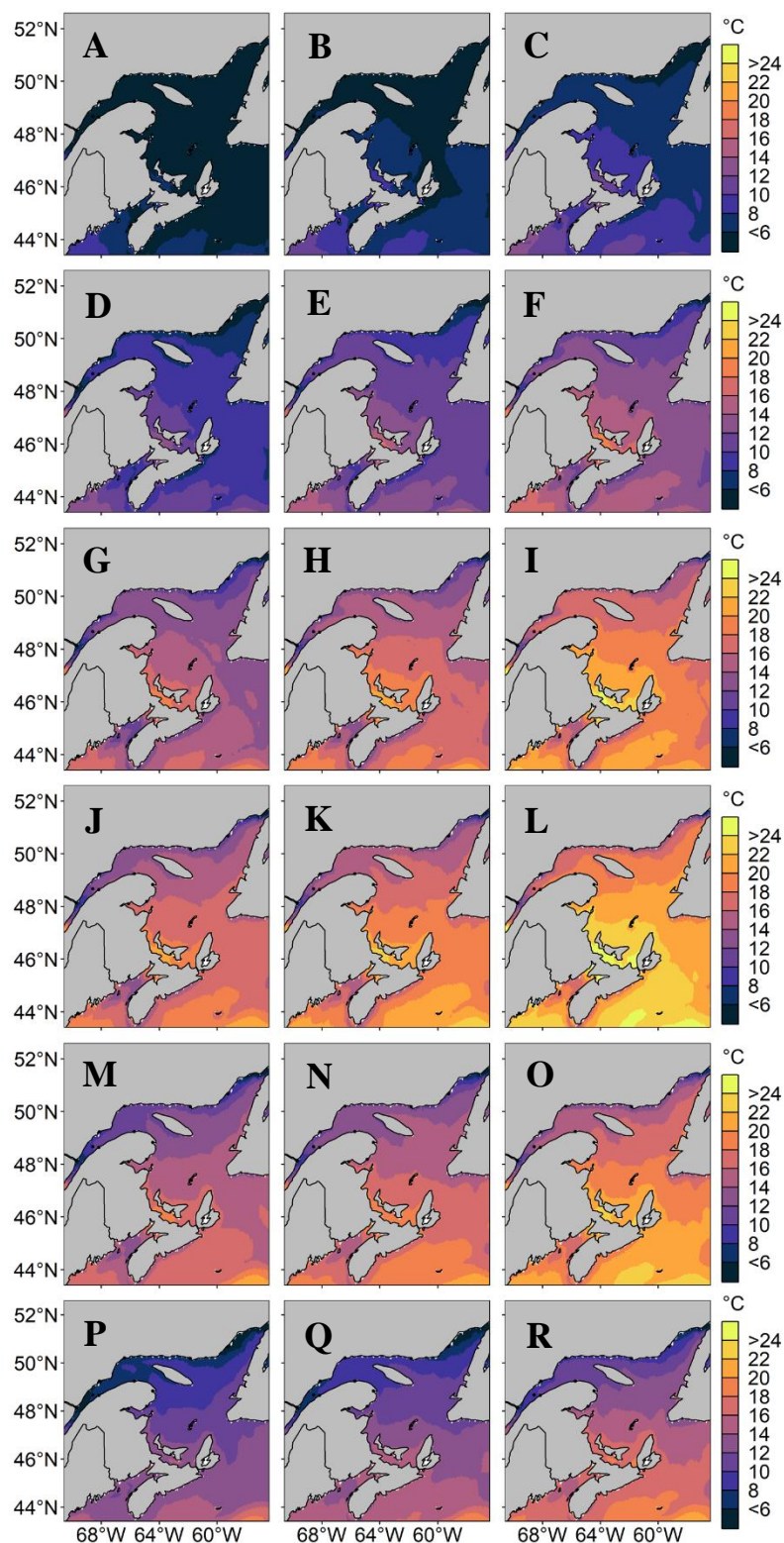
Supplementary Figure S11. Average sea surface temperature (°C) along Canada's East Coast under MPI-ESM-LR RCP 4.5 for (A) May 1999-2008, (B) May 2050-2059 and (C) May 2090-2099. Same pattern applies for (D-F) June, (G-I) July, (J-L) August, (M-O) September and (P-R) October.



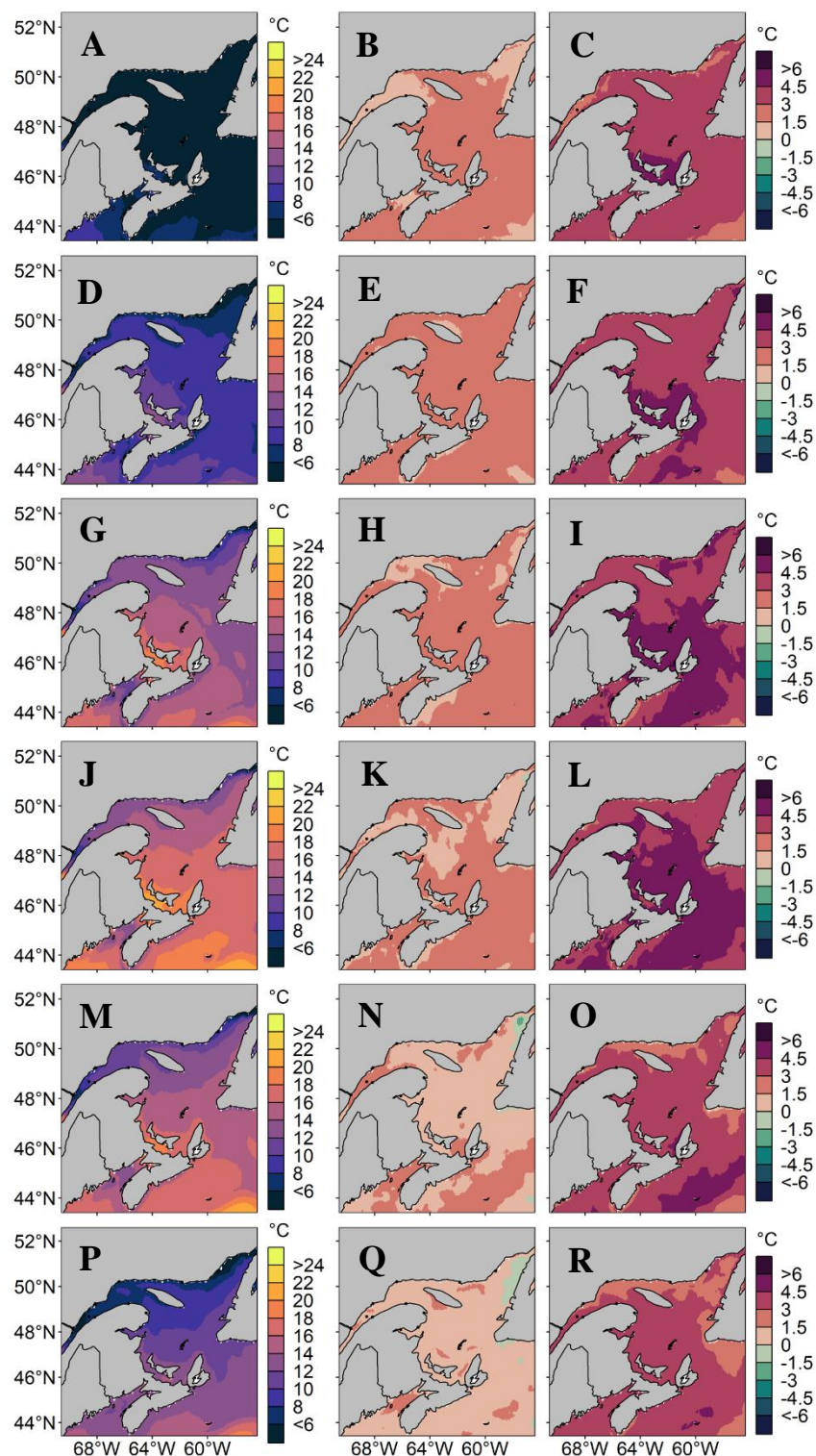
Supplementary Figure S12. Average sea surface temperature (°C) along Canada's East Coast under MPI-ESM-LR RCP 4.5 for (A) May 1999-2008, (B) difference in average sea surface temperature between May 1999-2008 and 2050-2059 and (C) difference in average sea surface temperature between May 1999-2008 and 2090-2099. Same pattern applies for (D-F) June, (G-I) July, (J-L) August, (M-O) September and (P-R) October.



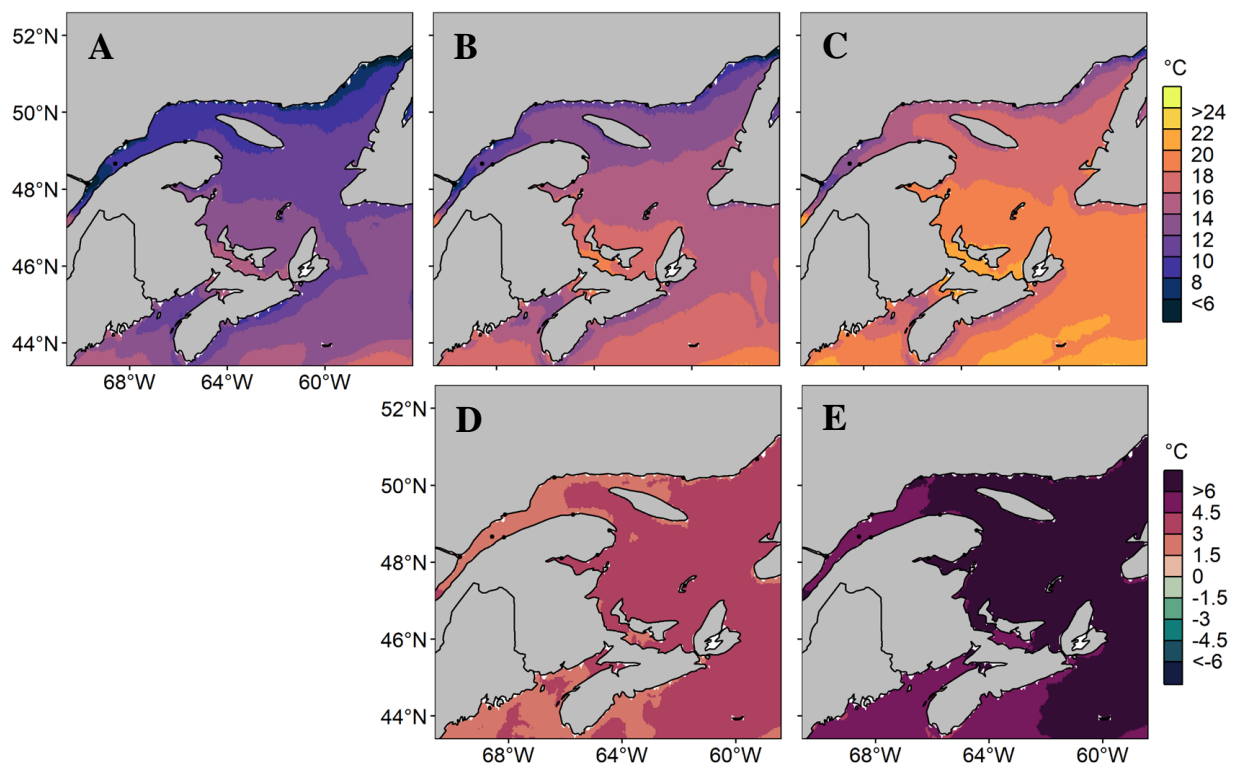
Supplementary Figure S13. Average sea surface temperature (°C) from May through October along Canada's East Coast under MPI-ESM-LR RCP 8.5 for (A) 1999-2008, (B) 2050-2059 and (C) 2090-2099 and difference in average sea surface temperature between (D) 1999-2008 and 2050-2059 and (E) 1999-2008 and 2090-2099.



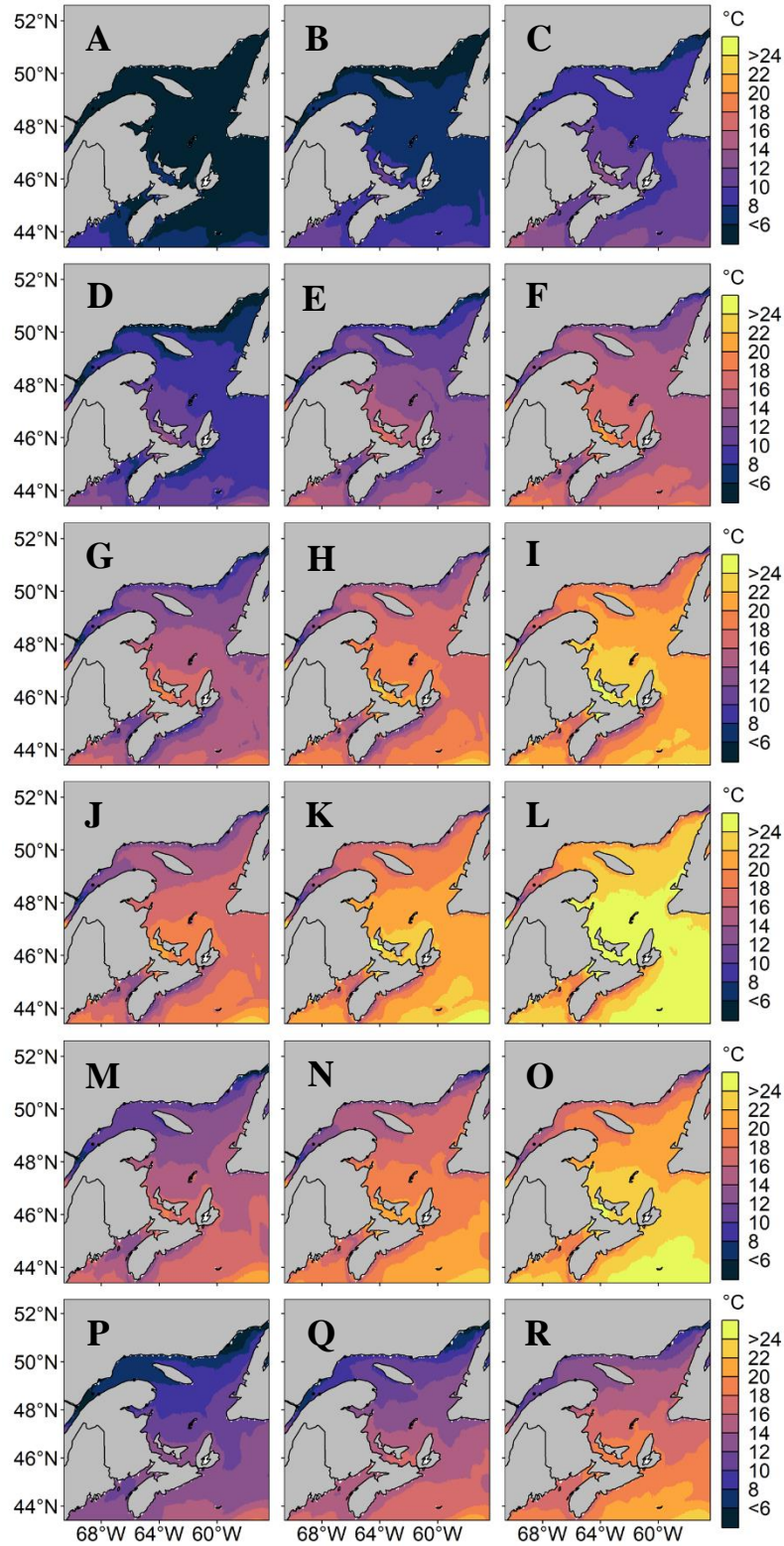
Supplementary Figure S14. Average sea surface temperature (°C) along Canada's East Coast under MPI-ESM-LR RCP 8.5 for (A) May 1999-2008, (B) May 2050-2059 and (C) May 2090-2099. Same pattern applies for (D-F) June, (G-I) July, (J-L) August, (M-O) September and (P-R) October.



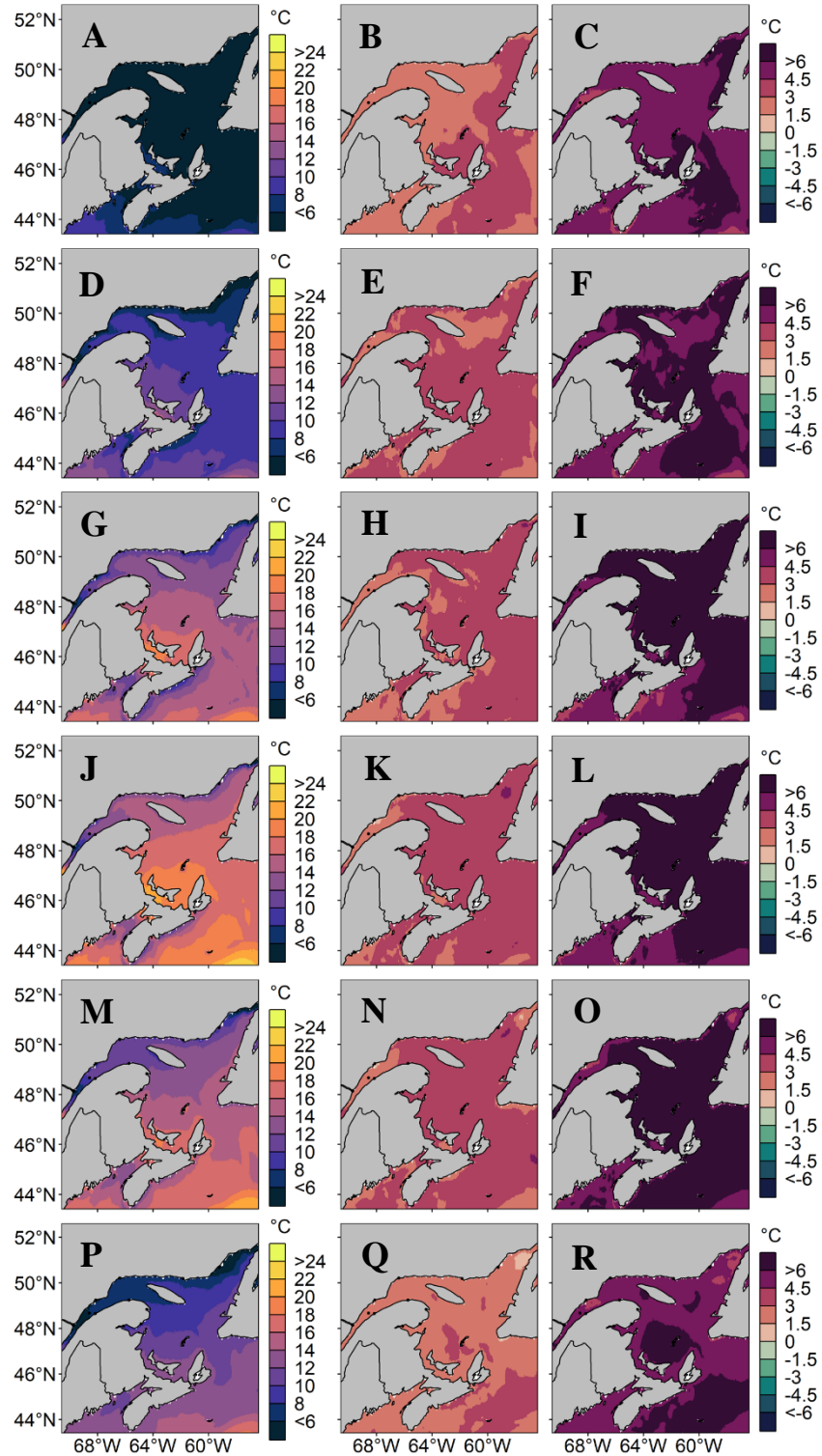
Supplementary Figure S15. Average sea surface temperature (°C) along Canada's East Coast under MPI-ESM-LR RCP 8.5 for (A) May 1999-2008, (B) difference in average sea surface temperature between May 1999-2008 and 2050-2059 and (C) difference in average sea surface temperature between May 1999-2008 and 2090-2099. Same pattern applies for (D-F) June, (G-I) July, (J-L) August, (M-O) September and (P-R) October.



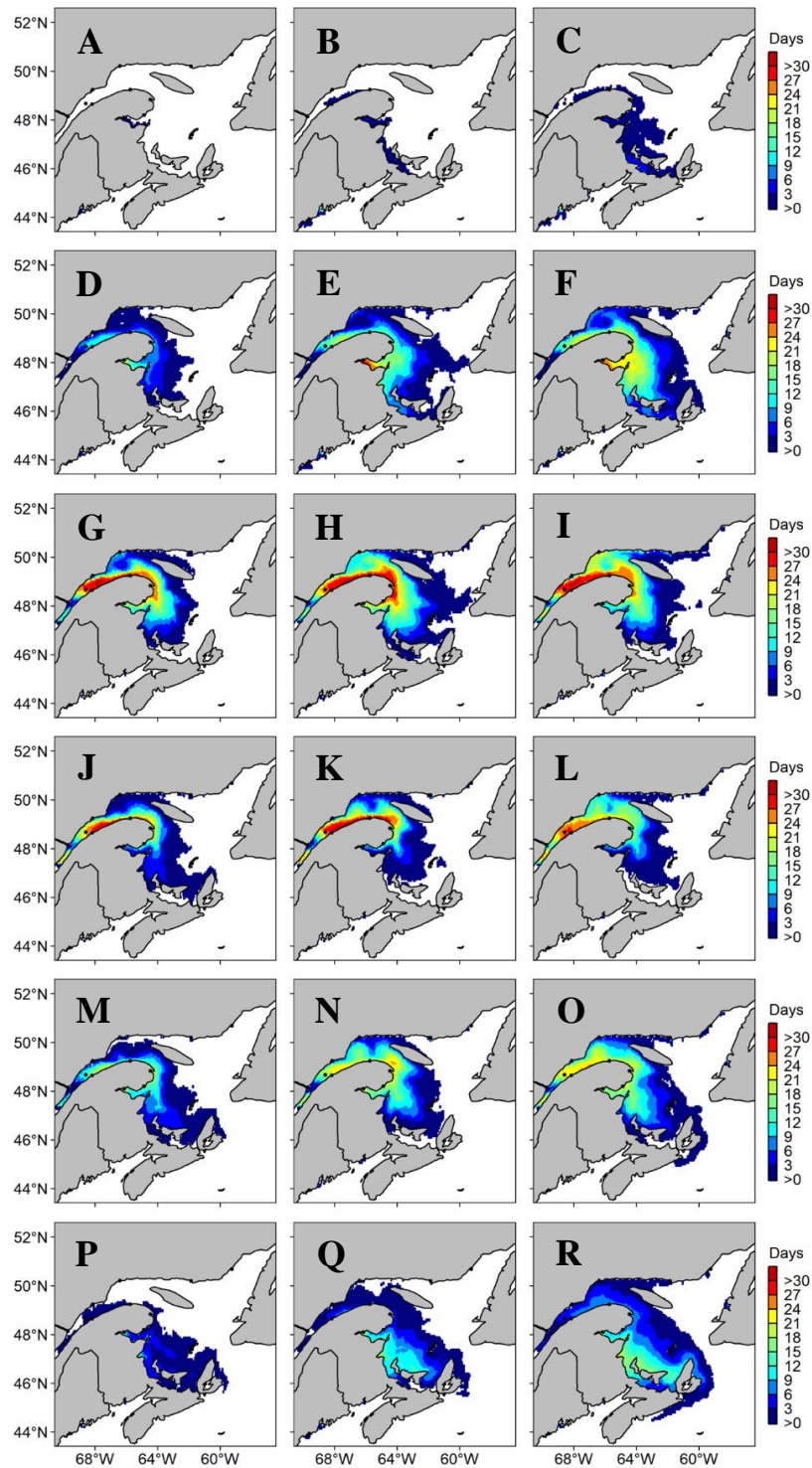
Supplementary Figure S16. Average sea surface temperature (°C) from May through October along Canada's East Coast under CanESM2 RCP 8.5 for (A) 1999-2008, (B) 2050-2059 and (C) 2090-2099 and difference in average sea surface temperature between (D) 1999-2008 and 2050-2059 and (E) 1999-2008 and 2090-2099.



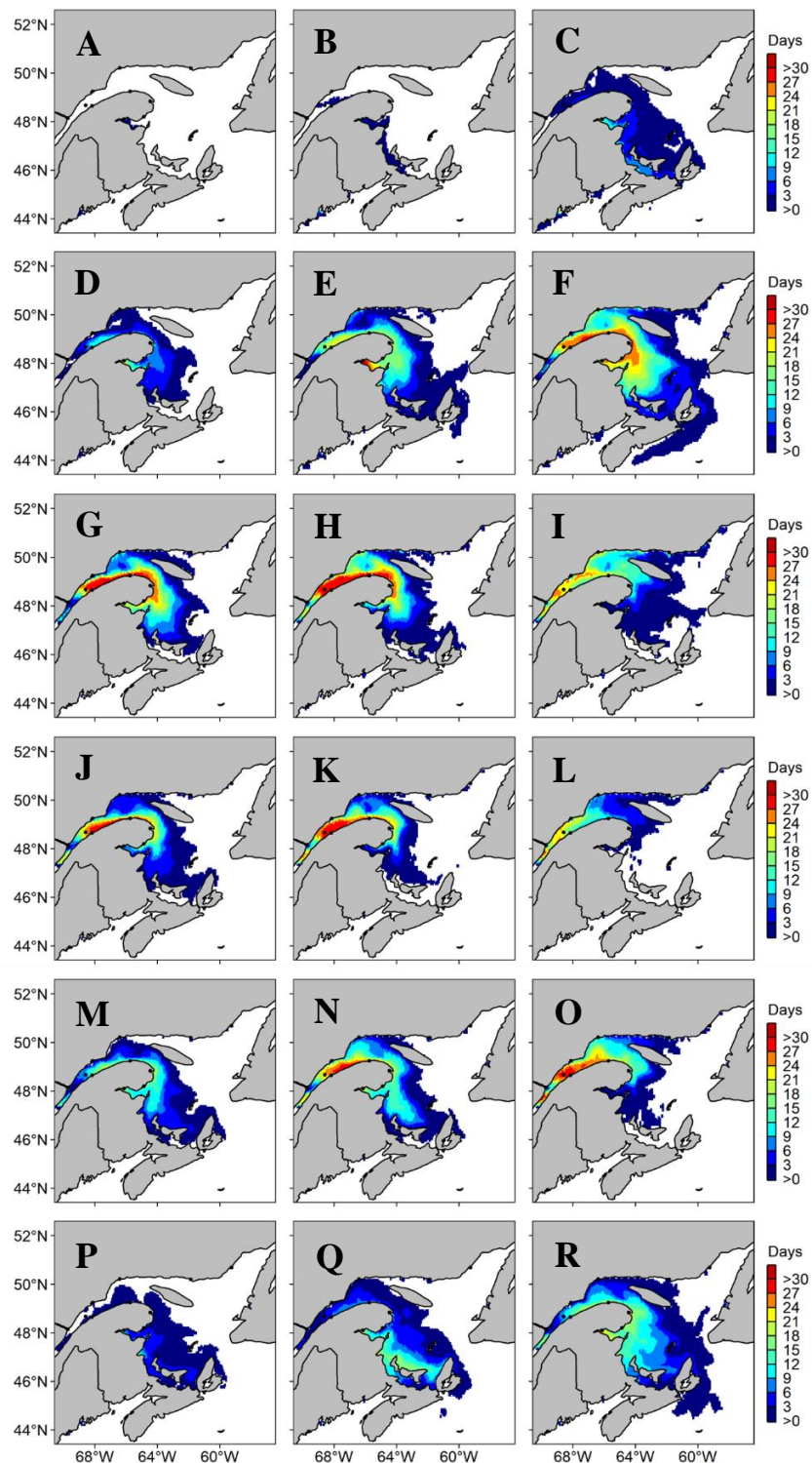
Supplementary Figure S17. Average sea surface temperature (°C) along Canada's East Coast under CanESM2 RCP 8.5 for (A) May 1999-2008, (B) May 2050-2059 and (C) May 2090-2099. Same pattern applies for (D-F) June, (G-I) July, (J-L) August, (M-O) September and (P-R) October.



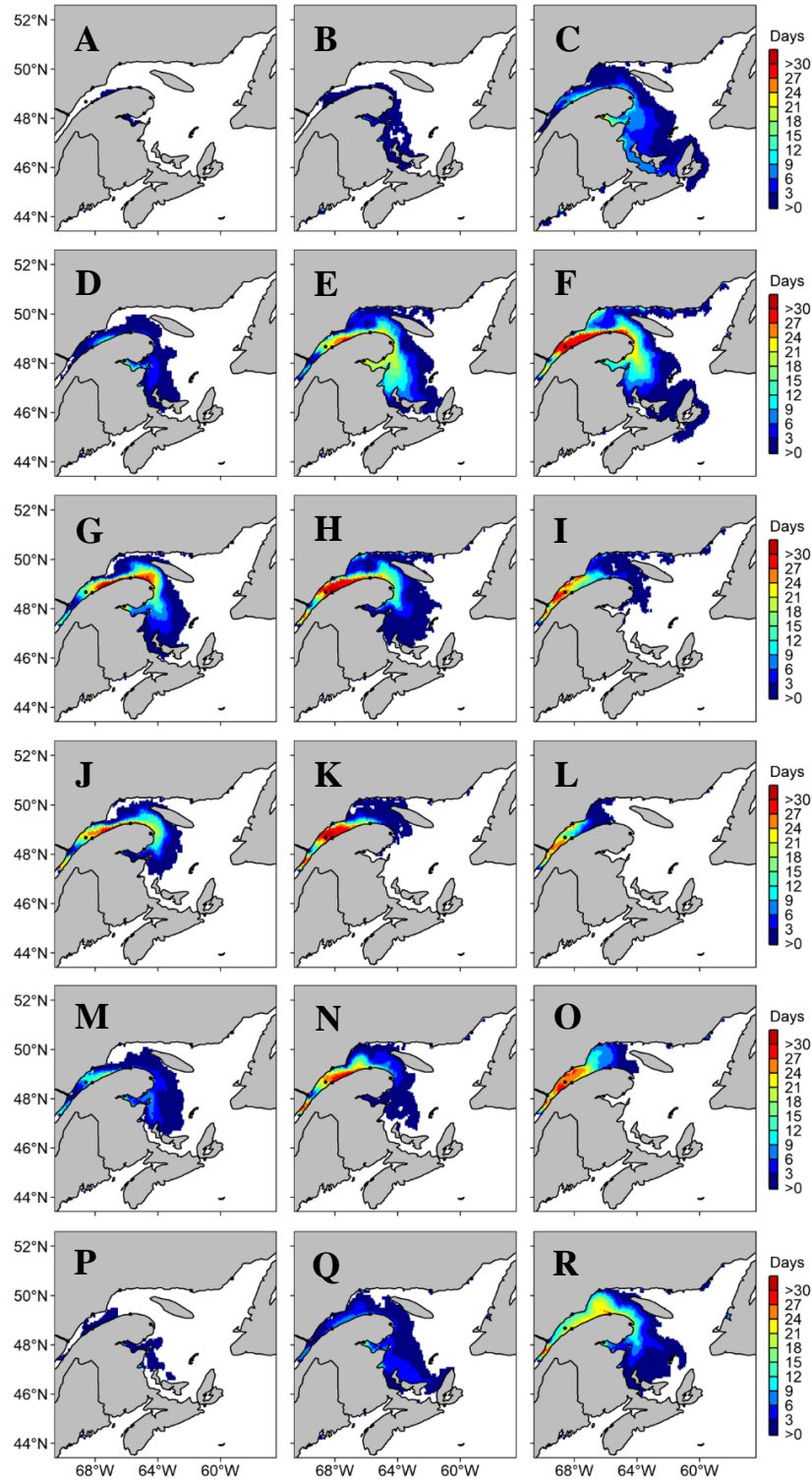
Supplementary Figure S18. Average sea surface temperature (°C) along Canada's East Coast under CanESM2 RCP 8.5 for (A) May 1999-2008, (B) difference in average sea surface temperature between May 1999-2008 and 2050-2059 and (C) difference in average sea surface temperature between May 1999-2008 and 2090-2099. Same pattern applies for (D-F) June, (G-I) July, (J-L) August, (M-O) September and (P-R) October.



Supplementary Figure S19. Average number of risk days with *Alexandrium catenella* ≥ 1000 cells L^{-1} along Canada's East Coast under MPI-ESM-LR RCP 4.5 for (A) May 1999-2008, (B) May 2050-2059 and (C) May 2090-2099. Same pattern applies for (D-F) June, (G-I) July, (J-L) August, (M-O) September and (P-R) October estimated using the HARM.



Supplementary Figure S20. Average number of risk days with *Alexandrium catenella* ≥ 1000 cells L^{-1} along Canada's East Coast under MPI-ESM-LR RCP 8.5 for (A) May 1999-2008, (B) May 2050-2059 and (C) May 2090-2099. Same pattern applies for (D-F) June, (G-I) July, (J-L) August, (M-O) September and (P-R) October using the HARM.



Supplementary Figure S21. Average number of risk days with *Alexandrium catenella* ≥ 1000 cells L^{-1} along Canada's East Coast under CanESM2 RCP 8.5 for (A) May 1999-2008, (B) May 2050-2059 and (C) May 2090-2099. Same pattern applies for (D-F) June, (G-I) July, (J-L) August, (M-O) September and (P-R) October using the HARM.