

Figure S1 Transfection of HUVEC with corresponding shRNA to inhibit ASK1 and ERK1/2.



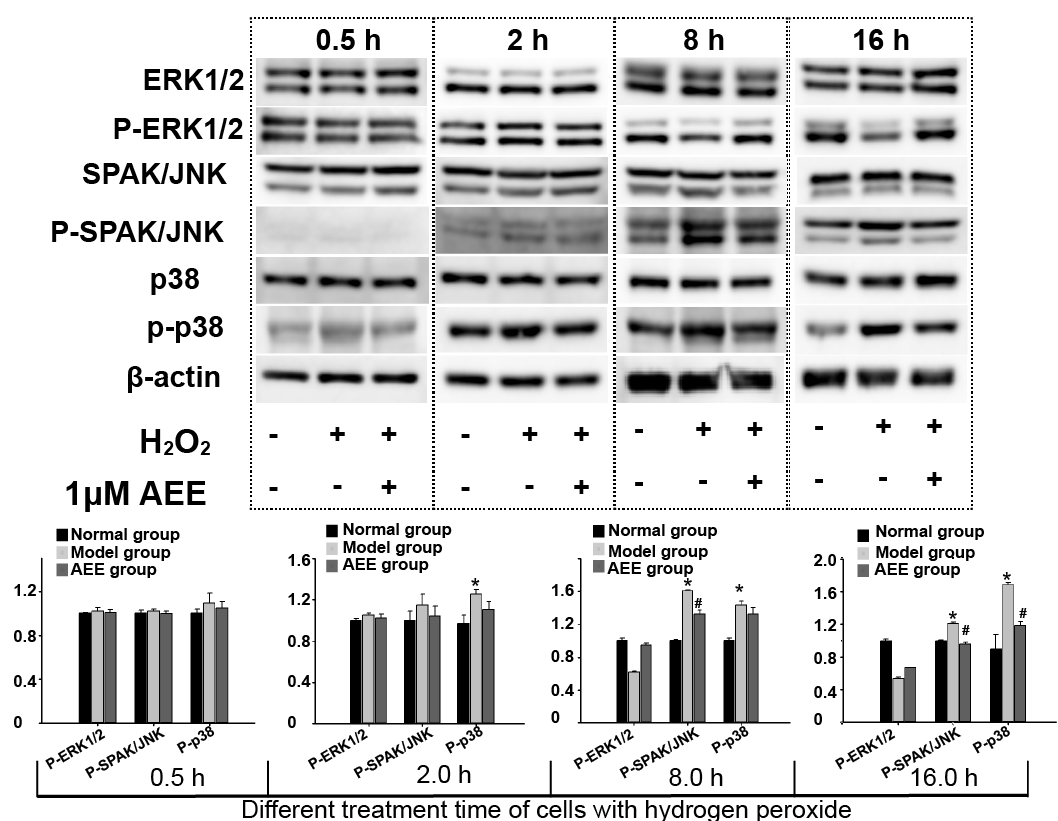


Figure S2 The changes in the activation of JNK, p38 and ERK following exposure to  $H_2O_2$  for different time.\* $p < 0.05$  compared with the normal group; # $p < 0.05$  compared with the  $H_2O_2$  group. “+”: with the treatments in the HUVECs; “-”: without the treatments in the HUVECs.



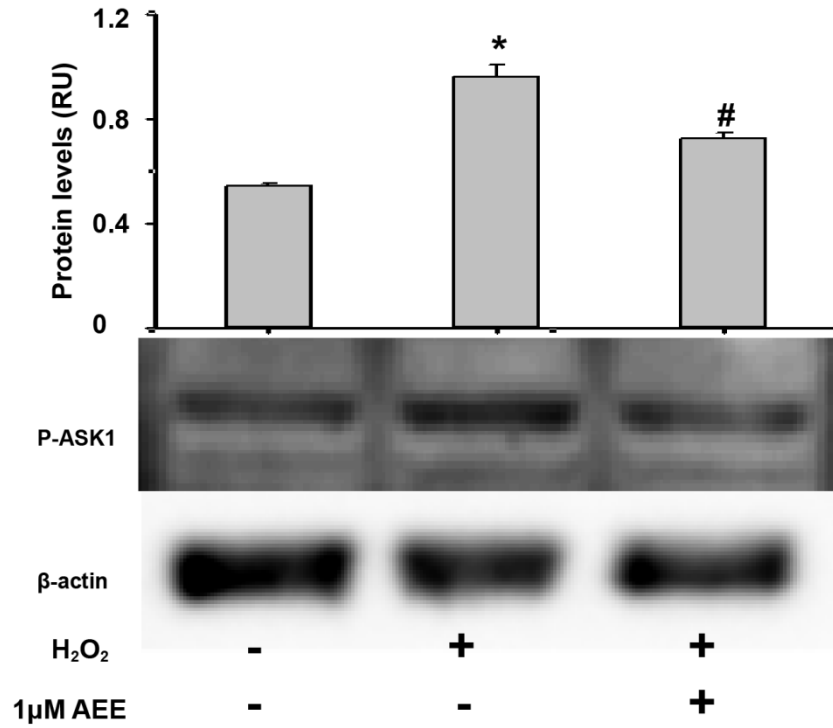


Figure S3 AEE ameliorated H<sub>2</sub>O<sub>2</sub>-induced changes of P-ASK1. Values are presented as the means  $\pm$  SD where applicable (n = 6); all data were normalized to the corresponding control and reported in relative units (RU). \*p < 0.05 compared with the normal group, #p < 0.05 compared with the H<sub>2</sub>O<sub>2</sub> group. “+”: with the treatments in the HUVECs; “-”: without the treatments in the HUVECs.



**Table S1.** The level of LDH, CK, AST, ALT, BUN and Cr in rat serum

(Mean  $\pm$  SD)

Group	LDH (U/L)	CK (U/L)	AST (U/L)	ALT (U/L)	BUN (mM)	Cr ( $\mu$ M)
control	306 $\pm$ 17	201.6 $\pm$ 31.5	25.4 $\pm$ 3.2	94.2 $\pm$ 7.3	5.7 $\pm$ 1.9	37.9 $\pm$ 2.6
PQ	721 $\pm$ 25*	653.7 $\pm$ 43.8*	72.5 $\pm$ 9.5*	192.4 $\pm$ 5.7*	22.1 $\pm$ 4.7*	89.5 $\pm$ 4.5*
27 mg/kg AEE+PQ	608 $\pm$ 43 <sup>#</sup>	602.2 $\pm$ 24.5	64.3 $\pm$ 8.7 <sup>#</sup>	168.5 $\pm$ 4.9 <sup>#</sup>	17.4 $\pm$ 3.2	79.7 $\pm$ 5.9
54 mg/kg AEE+PQ	506 $\pm$ 31 <sup>#</sup>	442.7 $\pm$ 13.8 <sup>#</sup>	47.5 $\pm$ 7.6 <sup>#</sup>	149.41 $\pm$ 9.2 <sup>#</sup>	13.7 $\pm$ 2.1 <sup>#</sup>	59.8 $\pm$ 3.7 <sup>#</sup>
108mg/kg AEE+PQ	572 $\pm$ 52 <sup>#</sup>	496.9 $\pm$ 47.8 <sup>#</sup>	54.8 $\pm$ 12.5 <sup>#</sup>	155.5 $\pm$ 11.5 <sup>#</sup>	16.5 $\pm$ 2.0 <sup>#</sup>	66.2 $\pm$ 4.8 <sup>#</sup>

\*p < 0.05 compared with the normal group, #p < 0.05 compared with the PQ group.

LDH: Lactic dehydrogenase; CK: Creatine kinase; AST: Aspartate transaminase;

ALT: Alanine aminotransferase; BUN: Blood urea nitrogen; Cr: Creatinine.