

## **Supplementary Material**

Suppression of Pitch Labeling: No Evidence for an Impact of  
Absolute Pitch on Behavioral and Neurophysiological Measures of  
Cognitive Inhibition in an Auditory Go/Nogo Task

Marielle Greber

Lutz Jäncke

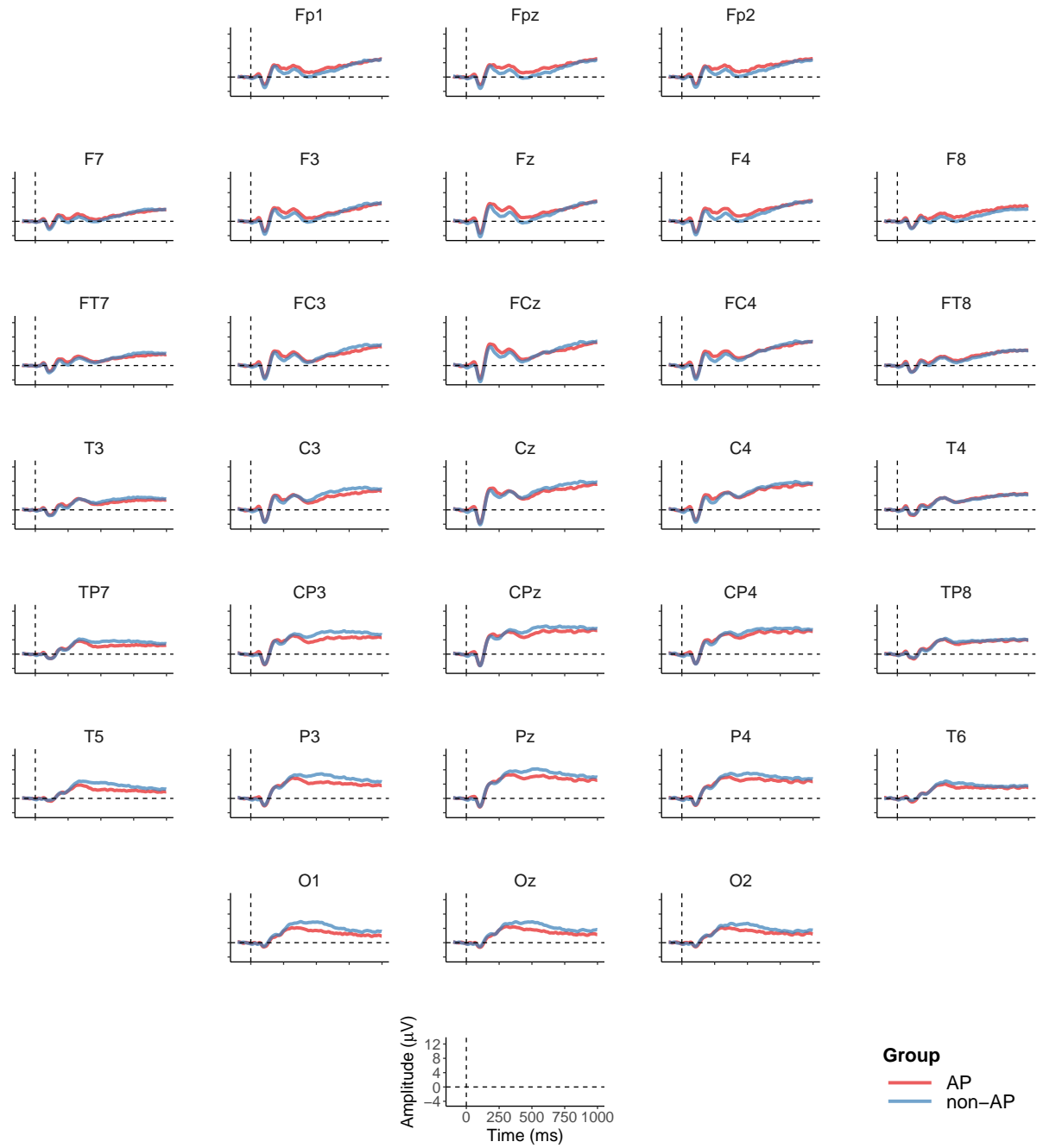
28 September 2020

## Condition comparison: Go, Nogo<sub>it</sub>, Nogo<sub>mt</sub>



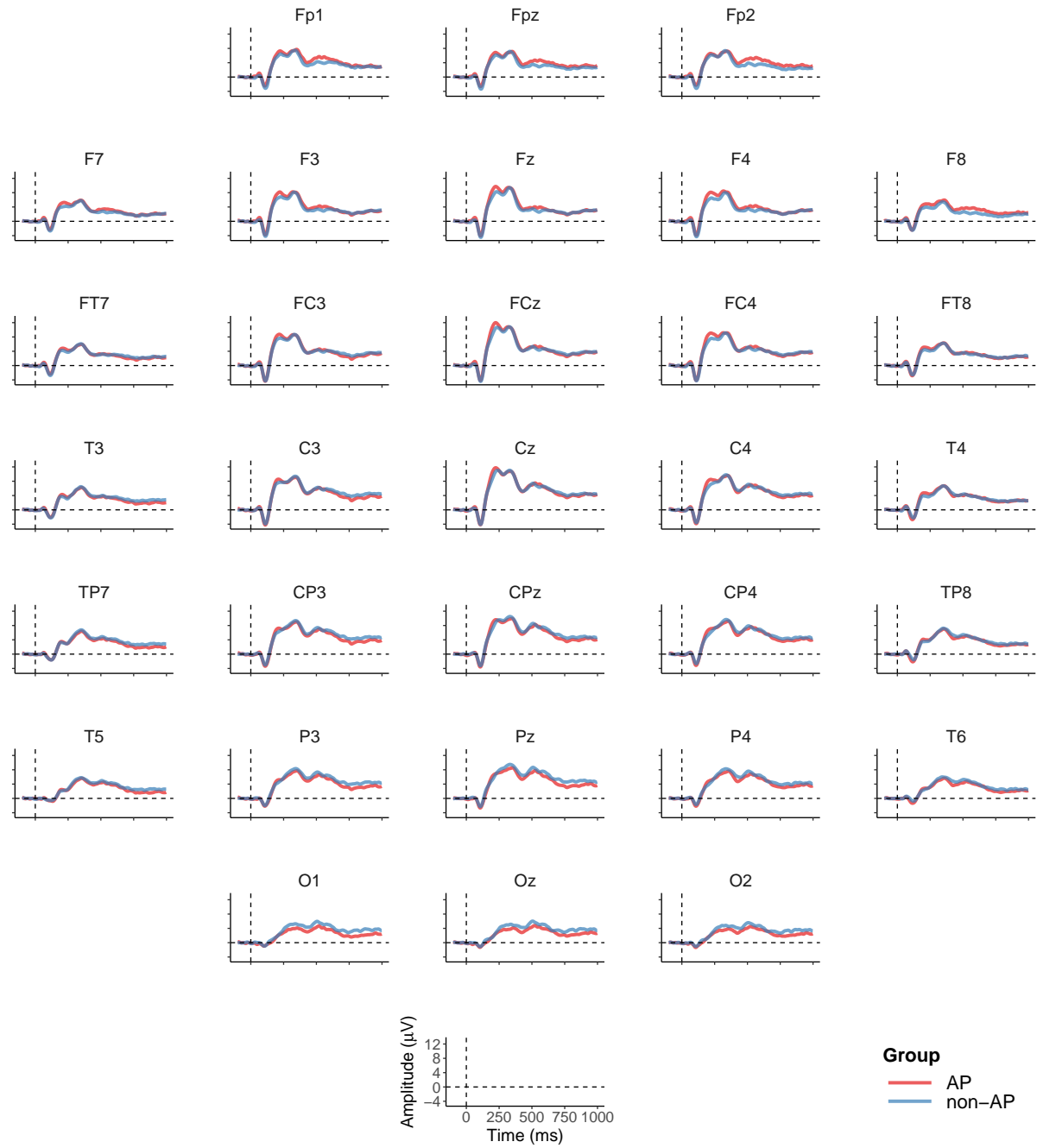
**Supplementary Figure 1.** Grand averages of the event-related potentials (ERPs) over all participants for the three cued conditions in the auditory Go/Nogo task (Go in green, Nogo<sub>it</sub> in violet, and Nogo<sub>mt</sub> in orange). Shown at all 31 electrodes.

## Group comparison: Go



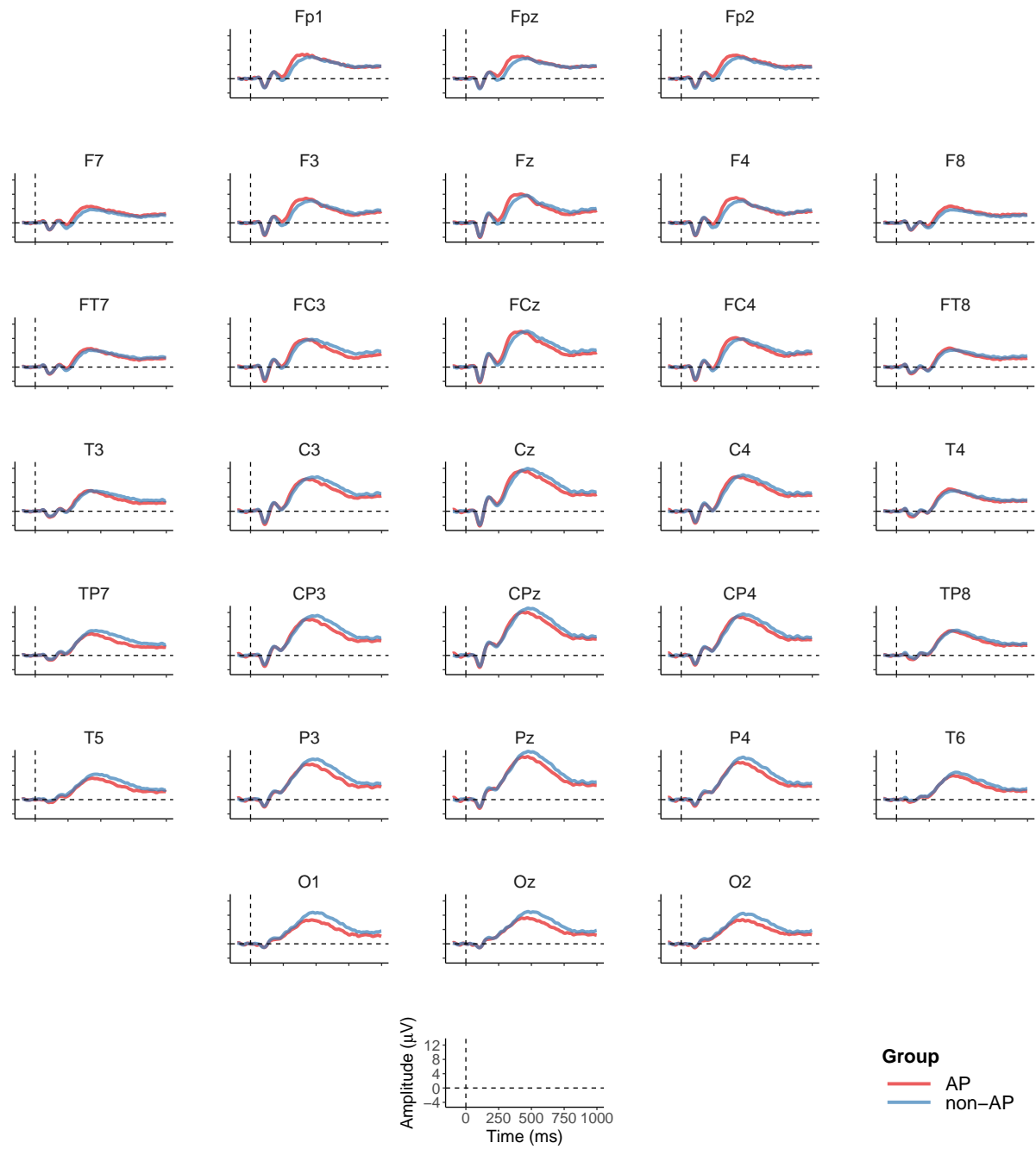
**Supplementary Figure 2.** Group-averaged ERPs for the Go condition at all 31 electrodes. Musicians with absolute pitch (AP) are shown in red, musicians without AP are shown in blue.

## Group comparison: Nogo<sub>it</sub>



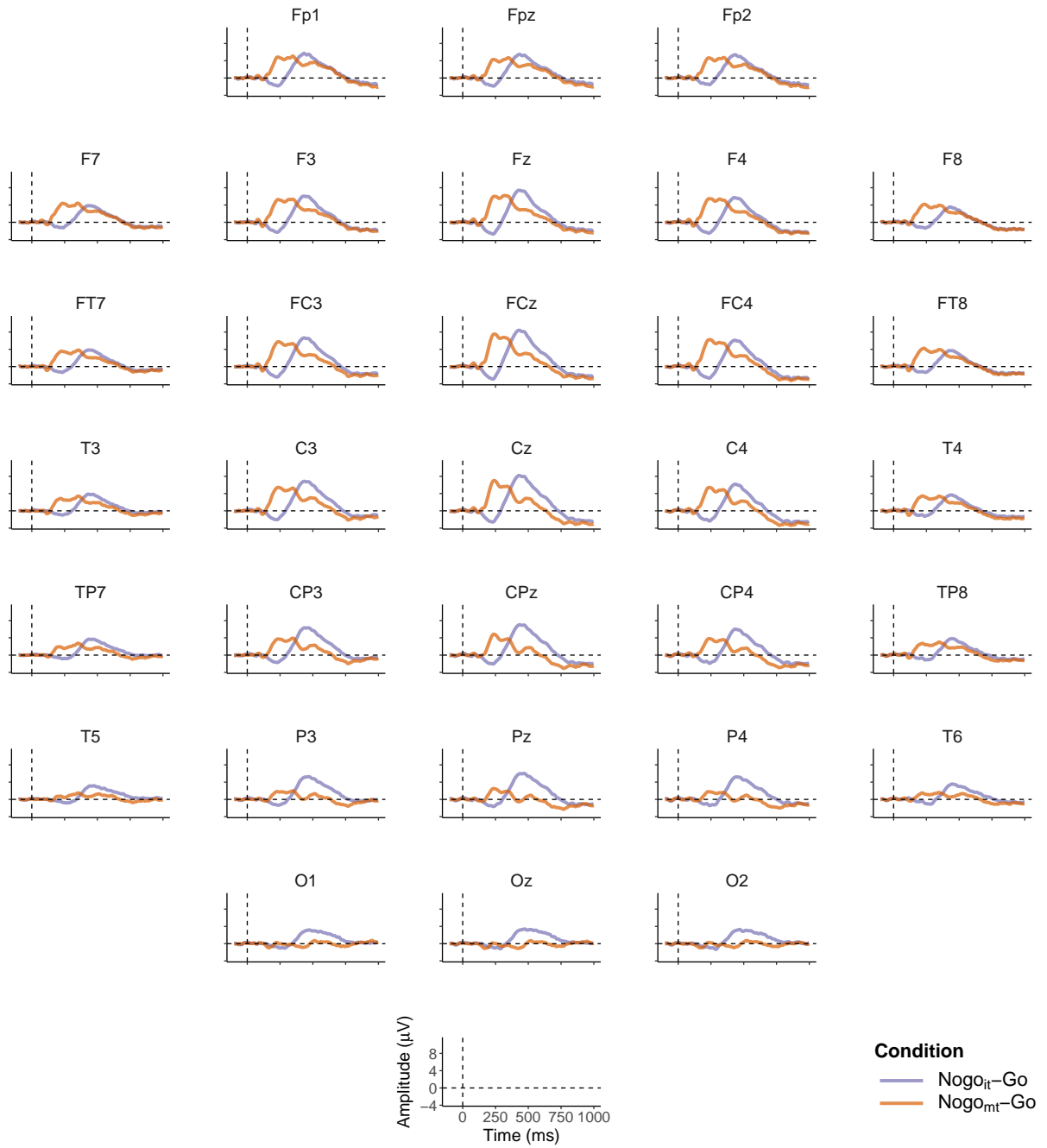
**Supplementary Figure 3.** Group-averaged ERPs for the Nogo<sub>it</sub> condition at all 31 electrodes. Musicians with AP are shown in red, musicians without AP are shown in blue.

## Group comparison: Nogo<sub>mt</sub>



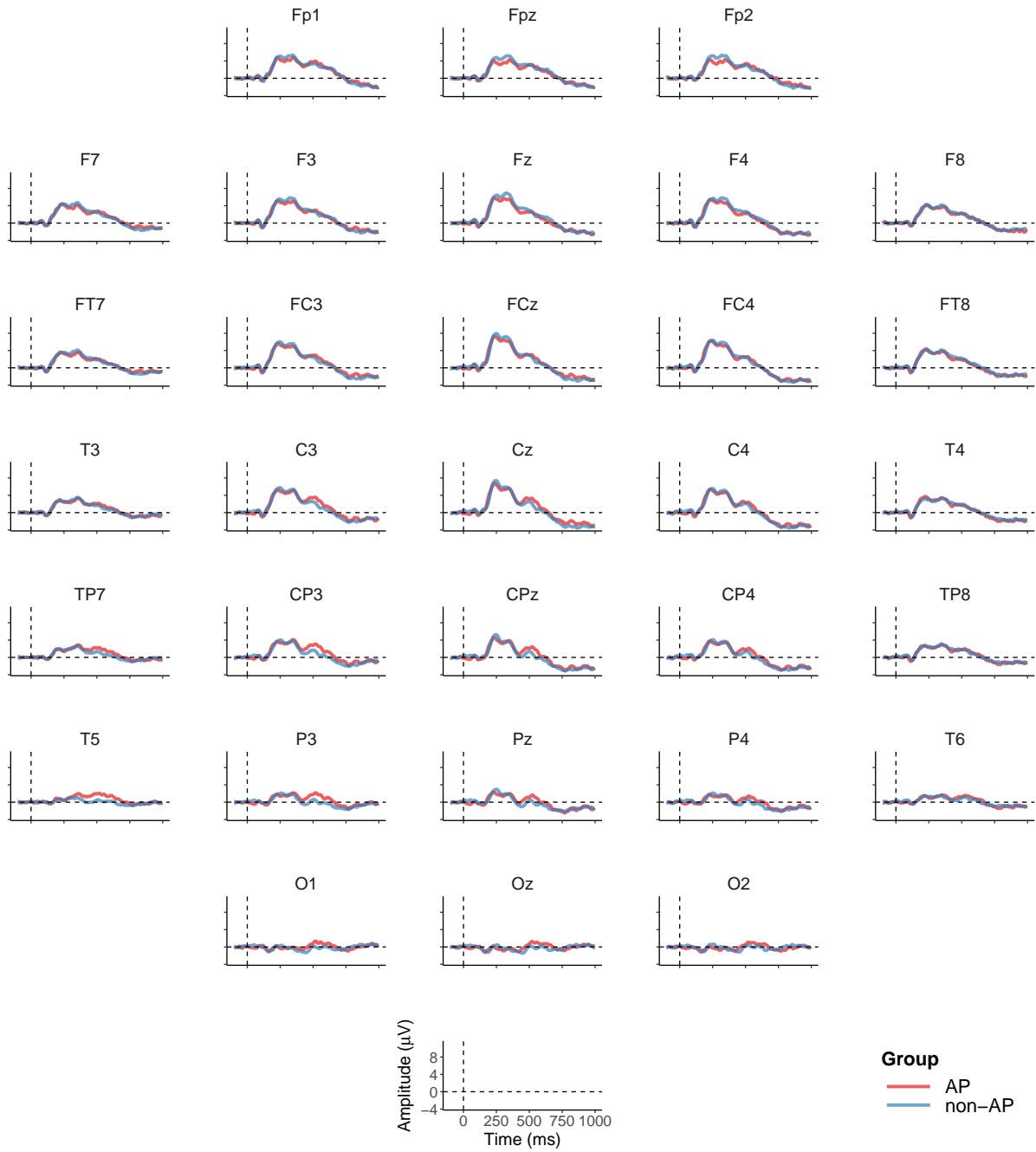
**Supplementary Figure 4.** Group-averaged ERPs for the Nogo<sub>mt</sub> condition separately for the two groups at all 31 electrodes. Musicians with AP are shown in red, musicians without AP are shown in blue.

## Condition comparison: Nogo<sub>it</sub>-Go, Nogo<sub>mt</sub>-Go



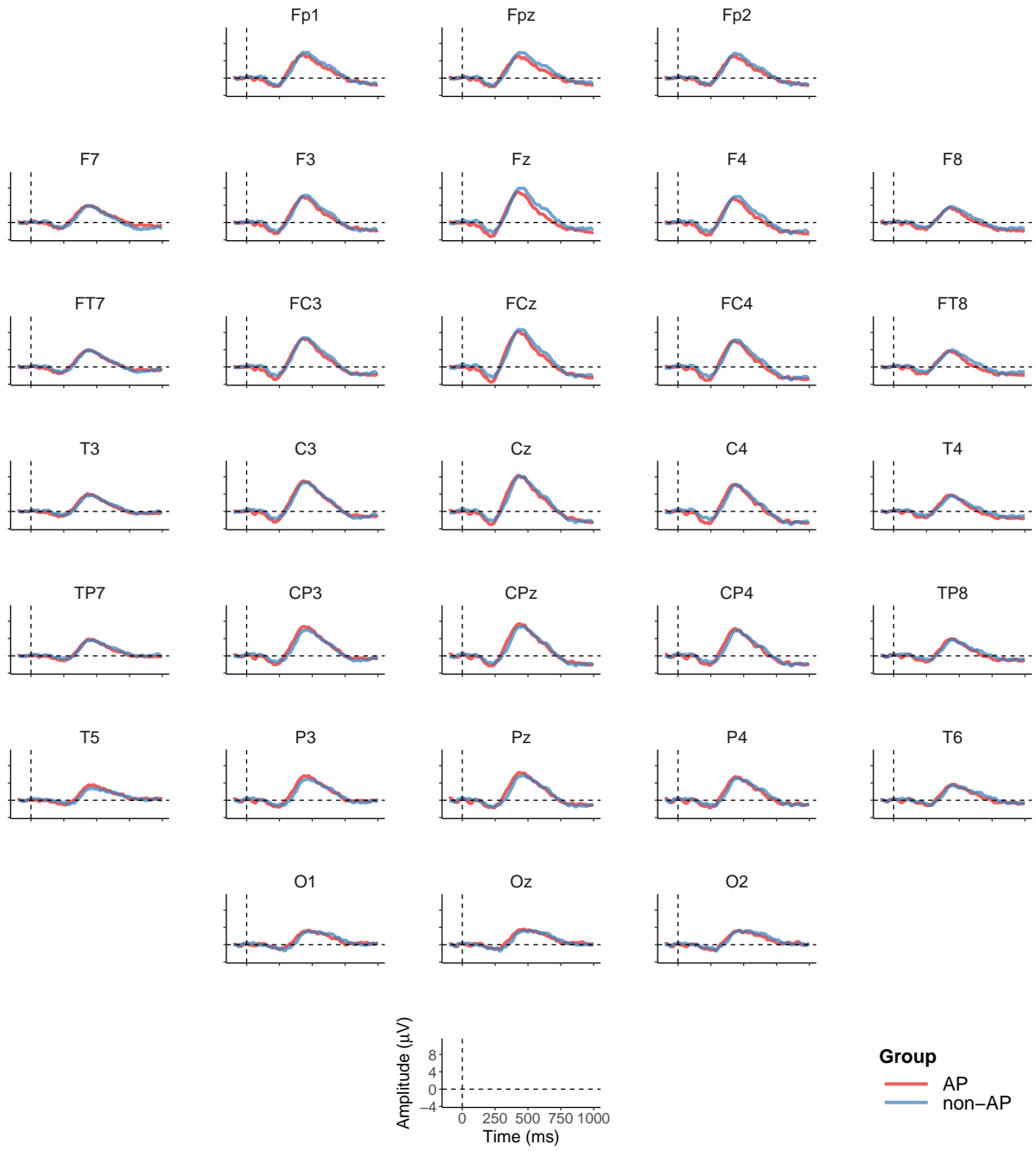
**Supplementary Figure 5.** Grand averages of the difference waves over all participants at all 31 electrodes. Nogo<sub>it</sub>-Go is depicted in violet, Nogo<sub>mt</sub>-Go is depicted in orange.

## Group comparison: Nogo<sub>it</sub>-Go



**Supplementary Figure 6.** Group averages of the difference wave Nogo<sub>it</sub>-Go at all 31 electrodes. Musicians with AP are shown in red, musicians without AP are shown in blue.

## Group comparison: Nogo<sub>mt</sub>-Go



**Supplementary Figure 7.** Group averages of the difference wave Nogo<sub>mt</sub>-Go at all 31 electrodes. Musicians with AP are shown in red, musicians without AP are shown in blue.