

## *Supplementary Material*

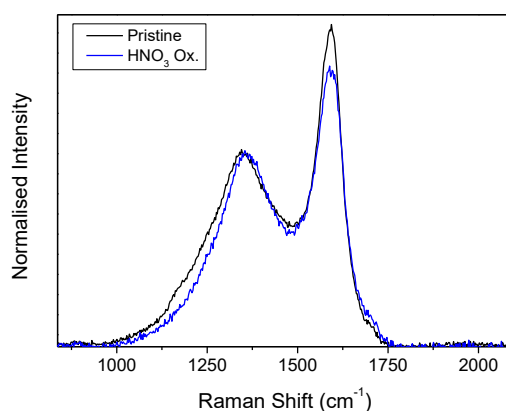
### **Porous Carbon Microparticles as Agents for Cell Delivery**

L. M. Magno,<sup>1</sup> D. T. Hinds,<sup>1</sup> P. Duffy,<sup>2</sup> R. B. Yadav,<sup>3</sup> A. D. Ward,<sup>3</sup> S. W. Botchway,<sup>4</sup> P. E. Colavita<sup>2</sup>  
and S. J. Quinn<sup>\*1</sup>

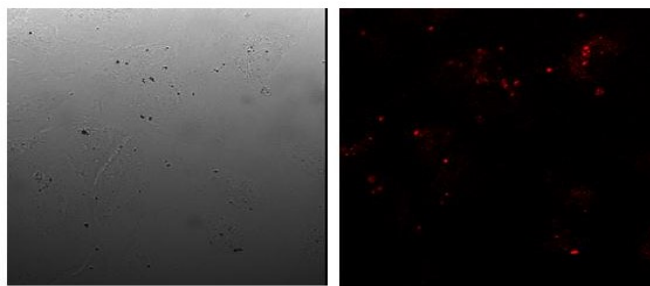
<sup>a</sup>School of Chemistry, University College Dublin, Dublin 4, Ireland.

<sup>b</sup>School of Chemistry, Trinity College Dublin, Dublin 2, Ireland.

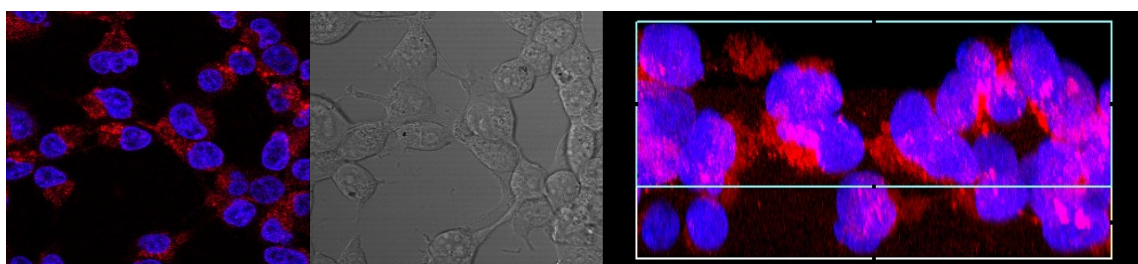
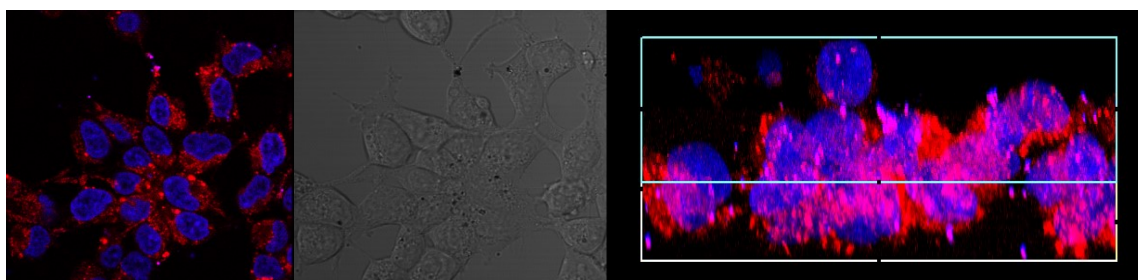
<sup>c</sup>Central Laser Facility, Science & Technology Facilities Council, Rutherford Appleton Laboratory, Didcot, Oxfordshire, OX11.



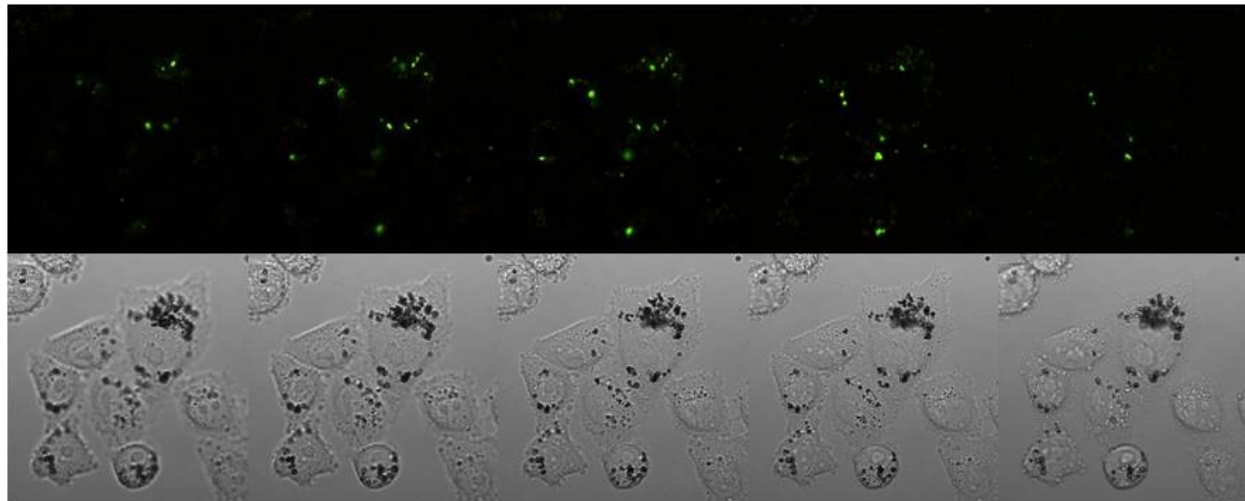
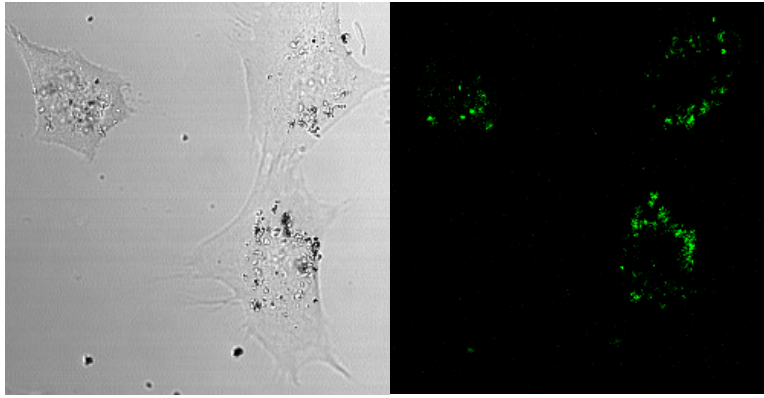
**Supplementary Figure 1.** Normalised, background subtracted spectra Raman spectra of pristine (black trace) and nitric acid oxidised (blue trace) L-C $\mu$ P-COOH. Spectra recorded with 514 nm excitation with a 50  $\times$  objective lens.



**Supplementary Figure 2.** Confocal images of HeLa cells incubated with large L-CuP-AAD-Rh particles in the absence of transfection agent (left) bright field image and (right) fluorescence image.



**Supplementary Figure 3.** Confocal images of HEK293 cells incubated with large L-CuP-PEG-Rh particles in the presence of transfection agent (top) and without transfection agent (bottom). (left) fluorescence image and (right) bright field image with associated depth profile analysis.



**Supplementary Figure 4.** Confocal images of HEK293 cells incubated with L-CuP-FL particles bright field image (left) and fluorescence image (right). Lower Confocal images of HeK293 cells after incubation with L-CuP-FL. (top) Sample scans showing changes in particle fluorescence with z-depth. (bottom) Bright field image showing L-CuP-FL in the cells.