

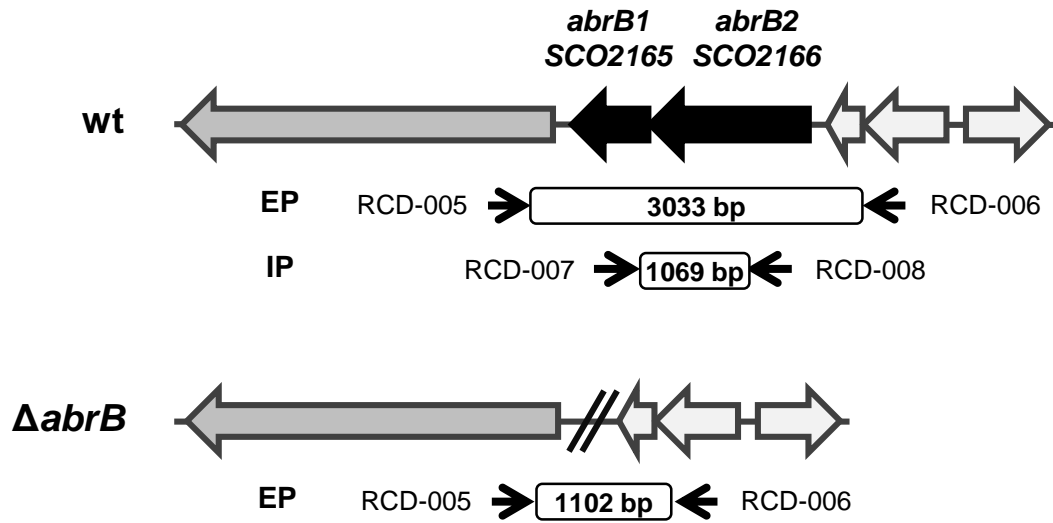
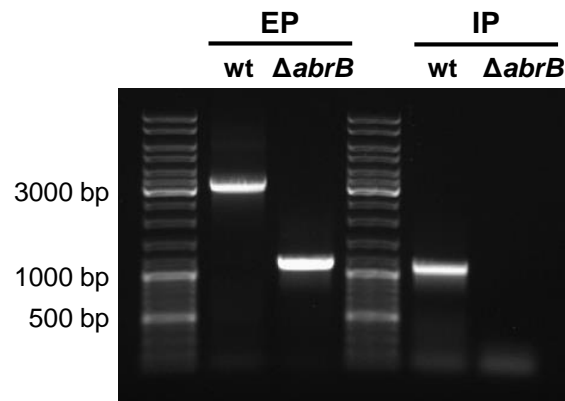
A**B**

Figure S1. Checking of the *abrB1/B2* Deletion.

A) Image of the location of the external and internal primers (EP and IP respectively) in the genome of *S. coelicolor* M145 wt and mutant *ΔabrB* strains. The sizes of the fragments generated by PCR are indicated in each case.

B) PCR fragments obtained using the corresponding EP and IP primers in both strains.