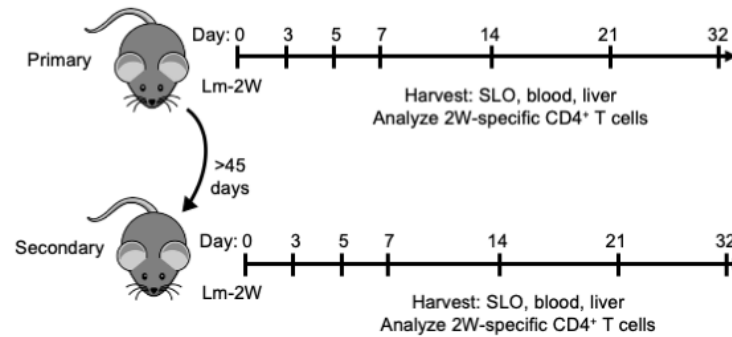
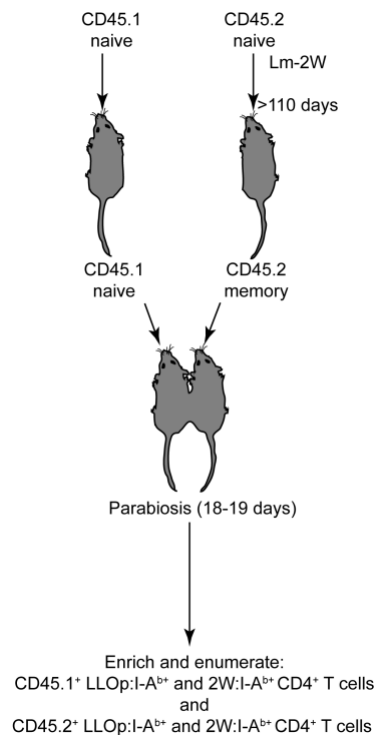


## Supplementary Material

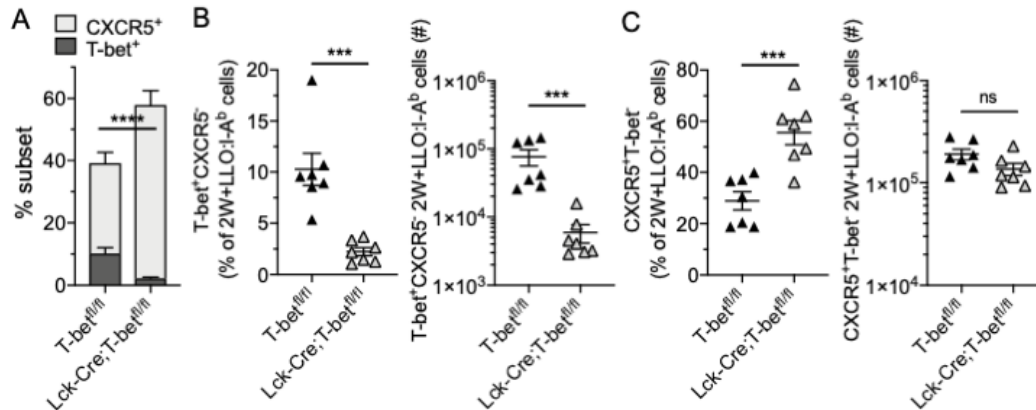


**Supplementary Figure 1. Analysis of Ag-specific CD4<sup>+</sup> T cells following primary and secondary *Lm* infection.** Schematic describing the experimental set up to compare antigen-specific CD4<sup>+</sup> T cell responses following primary or secondary *Lm* infection of intact mice.



**Supplementary Figure 2. Analysis of Ag-specific CD4<sup>+</sup> T cells following parabiosis.** CD45.2<sup>+</sup> mice were infected with *Lm*-2W; then, >110 dpi, mice were conjoined to CD45.1<sup>+</sup> naïve mice via

parabiosis. 18-19 days after surgery, 2W:I-A<sub>b</sub> and LLO:I-A<sub>b</sub>-specific CD4<sup>+</sup> T cells were enriched from SLO and liver of each parabiont and analyzed via flow cytometry.



**Supplementary Figure 3. Lck-Cre;T-bet<sup>fl/fl</sup> mice have reduced Ag-specific T-bet<sup>+</sup> Th1 cells following secondary Lm infection.** (A) Following secondary Lm infection, the frequency of 2W+LLO:I-A<sub>b</sub>-specific T-bet<sup>+</sup> Th1 cells or CXCR5<sup>+</sup> Tfh cells was assessed in SLO of T-bet<sup>fl/fl</sup> or Lck-Cre;T-bet<sup>fl/fl</sup> mice at 5 dpi. Number of 2W:I-A<sub>b</sub>-specific Th1 (B) or Tfh (C) cells in SLO following secondary infection of T-bet<sup>fl/fl</sup> or Lck-Cre;T-bet<sup>fl/fl</sup> mice at 5 dpi.