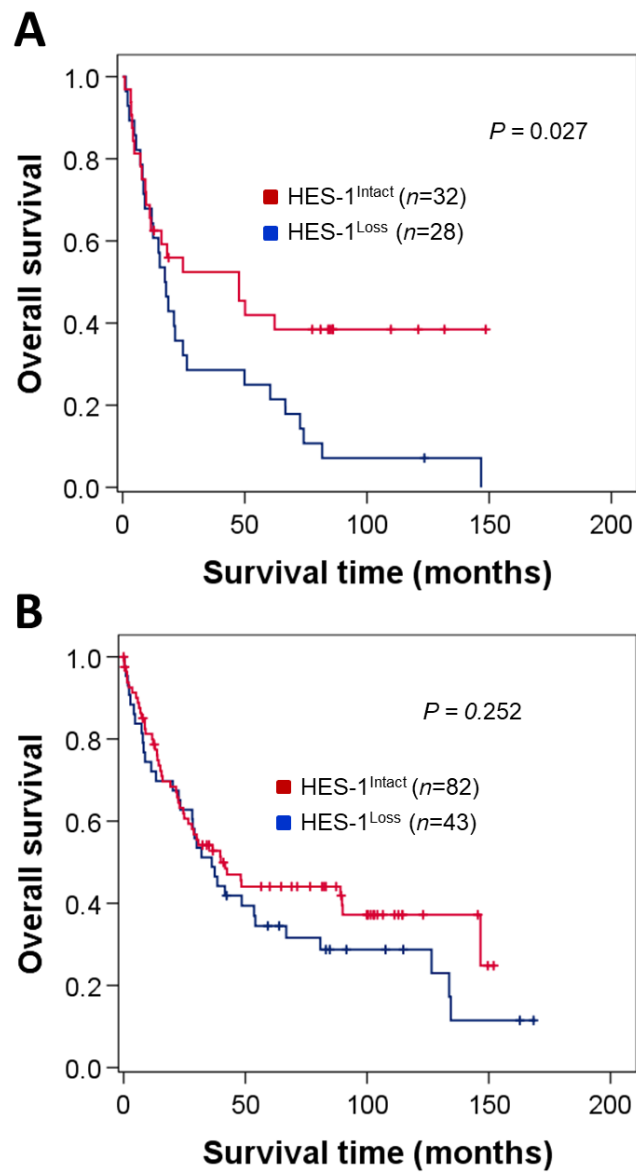


Supplementary Figure S1. HES-1 expression in small intestinal adenocarcinomas. **(A)** Representative staining images were displayed based on histoscore category. **(B)** There was no significant intra-tumor heterogeneity in small intestinal adenocarcinomas. Data represent the mean ± SEM.



Supplementary Figure S2. Survival analysis of patients with small intestinal adenocarcinomas according to *KRAS* genotypes. (A) In the $KRAS^{MT}$ group, patients with HES-1^{Loss} (median, 17.3 months; OS rate, 3.6%)

had worse OS than those with HES-1^{Intact} (47.6 months; 40.6%) ($P = 0.027$), whereas **(B)** there was no significant survival difference in the $KRAS^{WT}$ group based on the HES-1 expression status ($P = 0.252$).