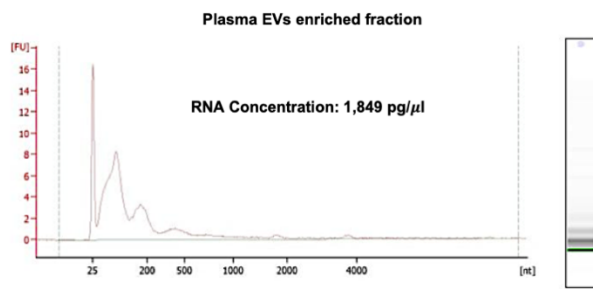
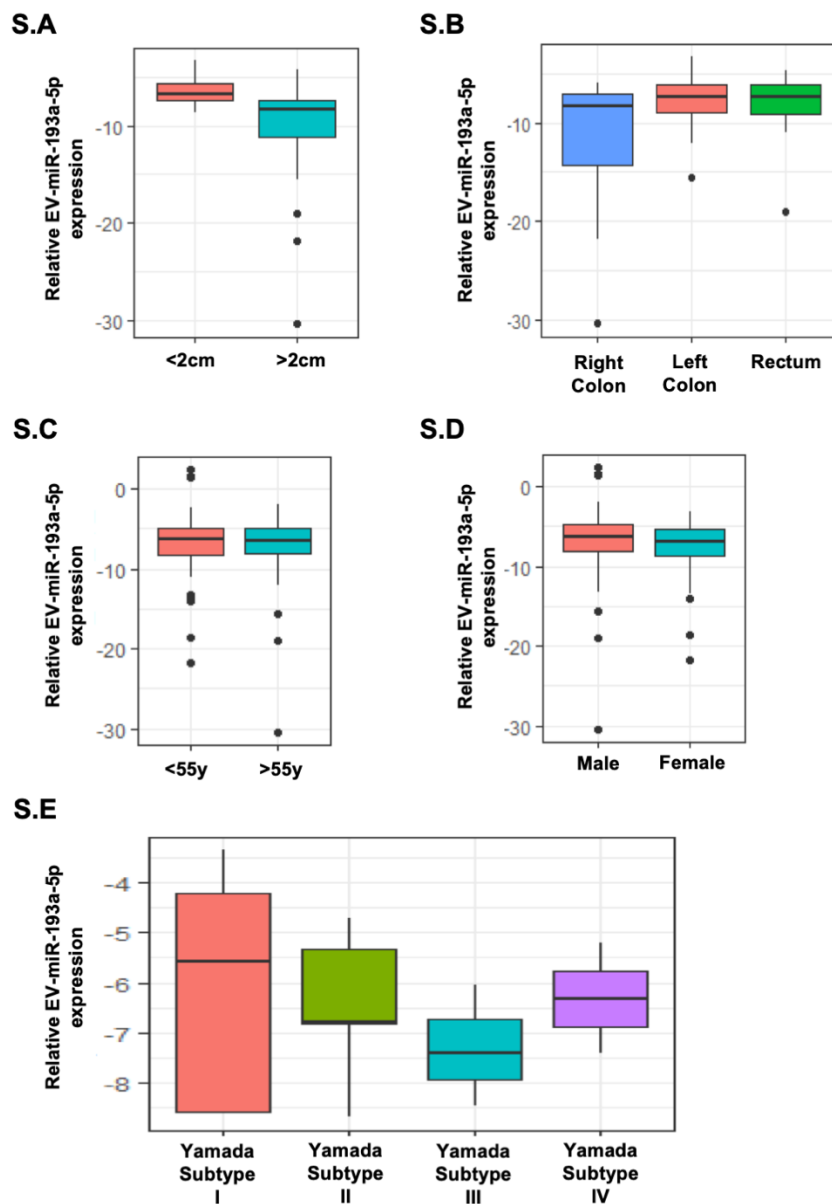


**S.A**



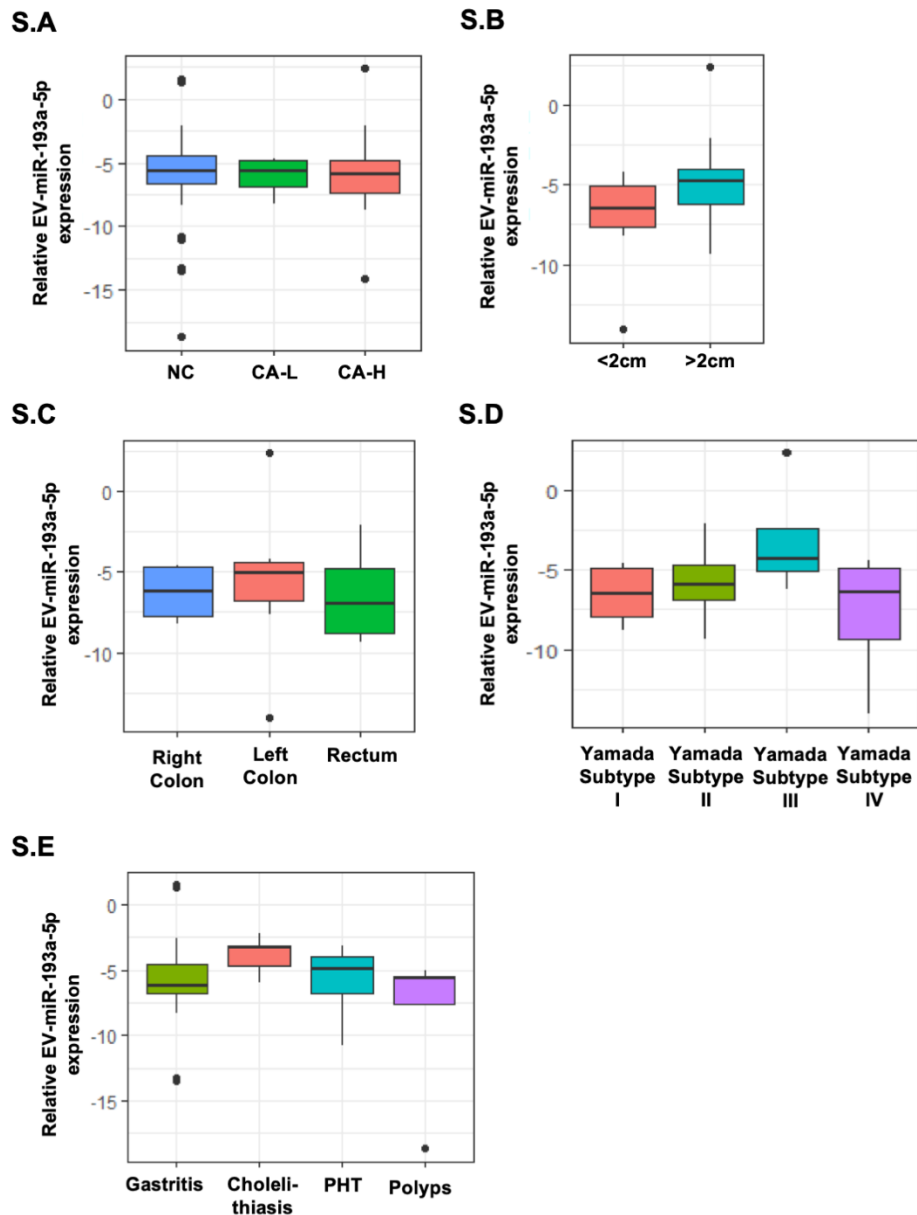
**Figure S1. Confirmation of human plasma EV-miRNAs.**

(A) Representative result of plasma EV enriched fractions derived RNAs by Agilent 2100 Bioanalyzer (25nt means miRNAs).



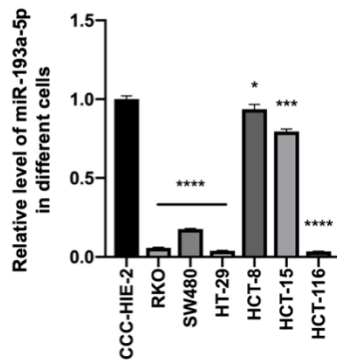
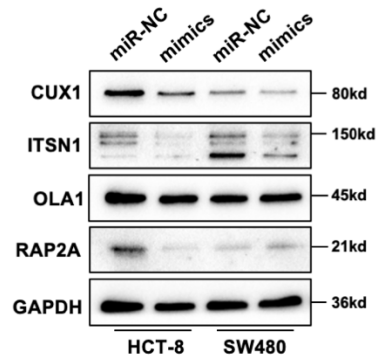
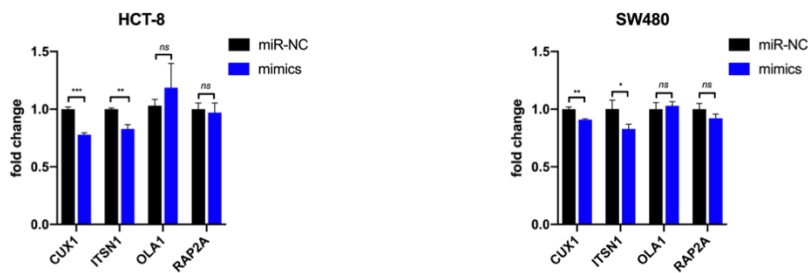
**Figure S2. Comparing the plasma EV-miR-193a-5p expression in CRC patients at different subgroups.**

**(A)** Tumor size (left: <2cm; right: >2cm). **(B)** Tumor location (left: Right colon; middle: Left colon; right: Rectum). **(C)** Patients age (left: <55 years; right:>55 years). **(D)** Patients gender (left: Male; right: Female). **(E)** Yamada Subtype (I, II, III and IV).



**Figure S3. Comparing the plasma EV-miR-193a-5p expression in NC and CA patients at different subgroups.**

(A) NC and CA subgroups (CA-Low grade, CA-High grade). (B) Tumor size (left: <2cm; right: >2cm). (C) Tumor location (left: Right colon; middle: Left colon; right: Rectum). (D) Yamada Subtype (I, II, III and IV). (E) Other digestive diseases (Gastritis, Cholelithiasis, PHT (portal hypertension), Polyps).

**S.A****S.B****S.C**

**Figure S4. miR-193a-5p is decreased in different CRC cell lines, and CUX1 and ITSN1 are its' target genes.**

(A) Comparing the relative expression level of miR-193a-5p among normal colon epithelial cell (CCC-HIE-2) and different CRC cell lines by RT-qPCR ( $*p<0.05$ ,  $***p<0.001$ ,  $****p<0.0001$ ). (B) The protein expression analysis of 4 tumor associated target genes, including CUX1, ITSN1, OLA1, and RAP2A, in CRC cells after transfection with miR-193a-5p mimics or miR-NC. (C) The mRNA expression analysis of 4 tumor associated genes, including CUX1, ITSN1, OLA1, and RAP2A, in HCT-8 and SW480 cells after transfection with miR-193a-5p mimics or miR-NC ( $*p<0.05$ ,  $**p<0.01$ ,  $***p<0.001$ ).