

FIGURE S1: CD1d^{hi}CD5⁺ B cells are predominant IL-10 producers in Sle1b autoimmune mouse model.

Splenocytes derived from Sle1b mice were cultured with LPS, PMA, Ionomycin and Monensin for 5 hrs and stained for CD19, CD1d and CD5 followed by intracellular staining for IL-10. Representative contour plot (A) show-gating strategy for CD1d^{hi}CD5⁻, CD1d^{hi}CD5⁺, CD1d^{lo}CD5⁺, and CD1d^{lo}CD5⁻ cells. Flow cytometric overlay histogram (B) shows IL-10 expression in the indicated cell populations. (C) Splenocytes from Sle1b mice were stimulated as described in A, B and stained for IL-10 for the Imagestream analysis. Representative Imagestream images for B220⁺CD1d^{hi}CD5⁺ B10 cells and B220⁺CD1d^{lo}CD5⁻ non-B10 cells.

Figure S2

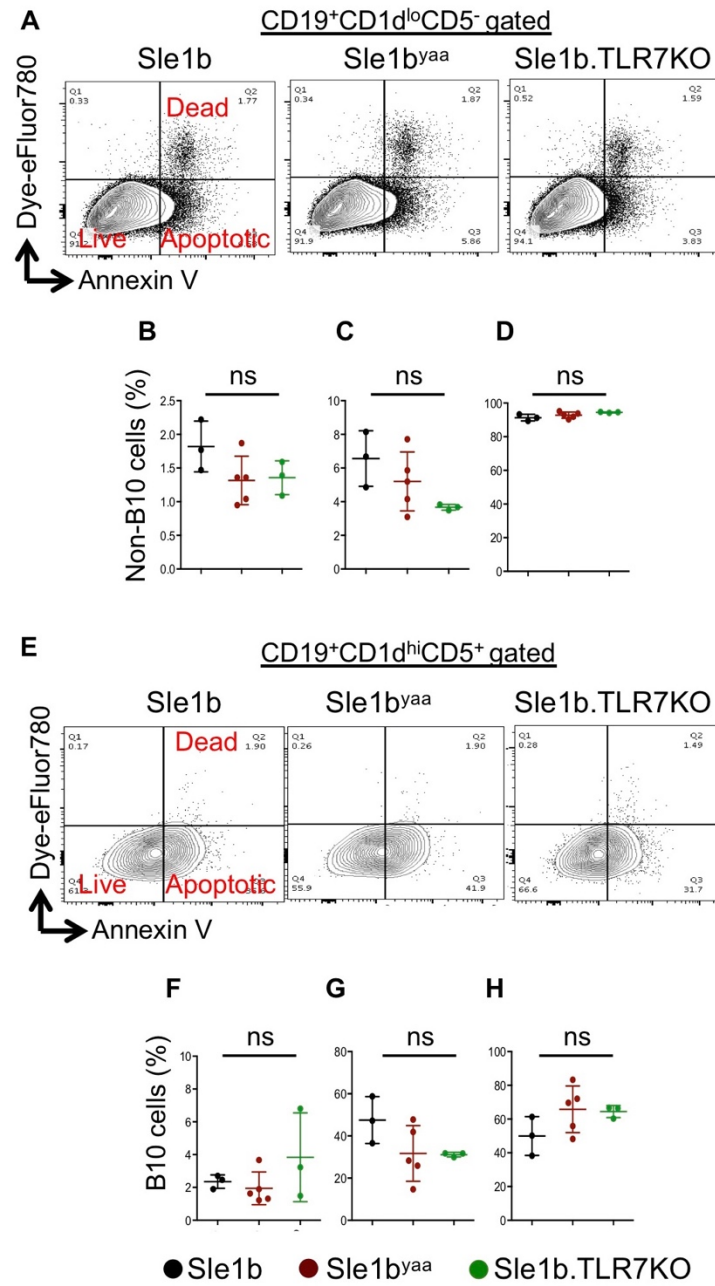


Figure S2: TLR7 expression has not effect on the spontaneous cell death of B10 and non-B10 cells. (A, E) Representative flow plots show live, apoptotic and dead cell populations of gated cells in the spleens of indicated mouse strains at the age of 3 mo. Scatterplots show percentages of dead (B, F), apoptotic (C, G) and live (D, H) cell populations in non-B10 (CD19⁺CD1d^{lo}CD5⁻) and B10 (CD19⁺CD1d^{hi}CD5⁺) cell fractions. Data represent a single experiment. Statistical analysis was performed by one-way ANOVA with a follow-up Tukey multiple-comparison. ns, non-significant.