

Figure S1: Rarefaction curve of all samples. Dashed line represents the sub-sampling depth.

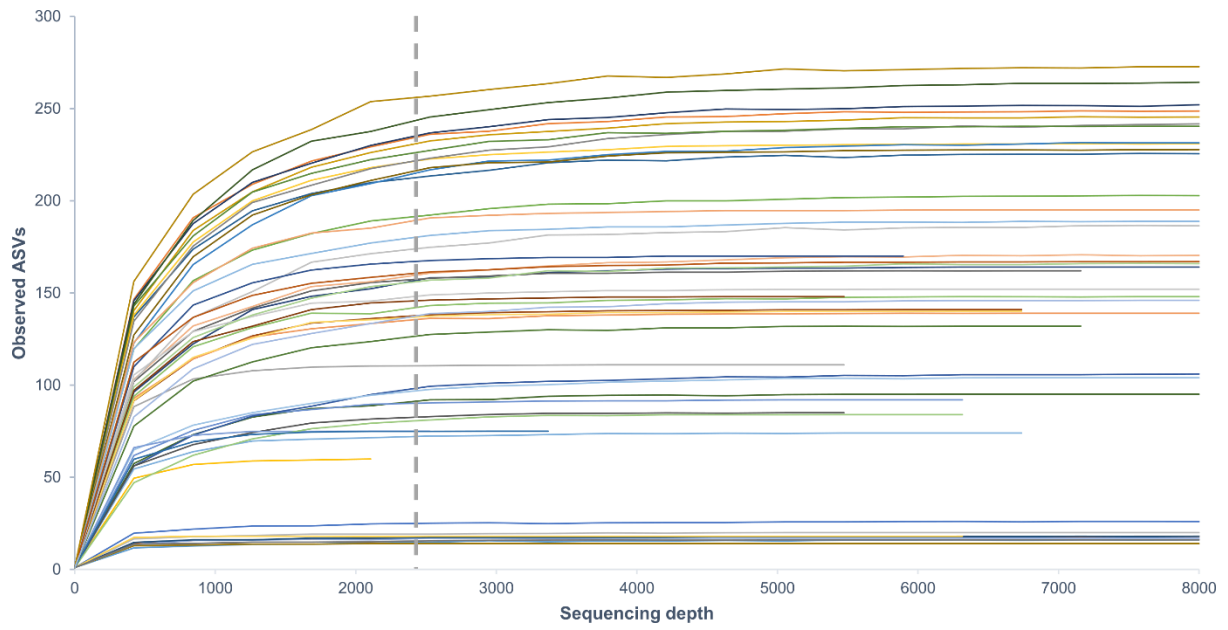


Figure S2: Taxonomic composition of all samples at the phylum level (A) and order level (B).

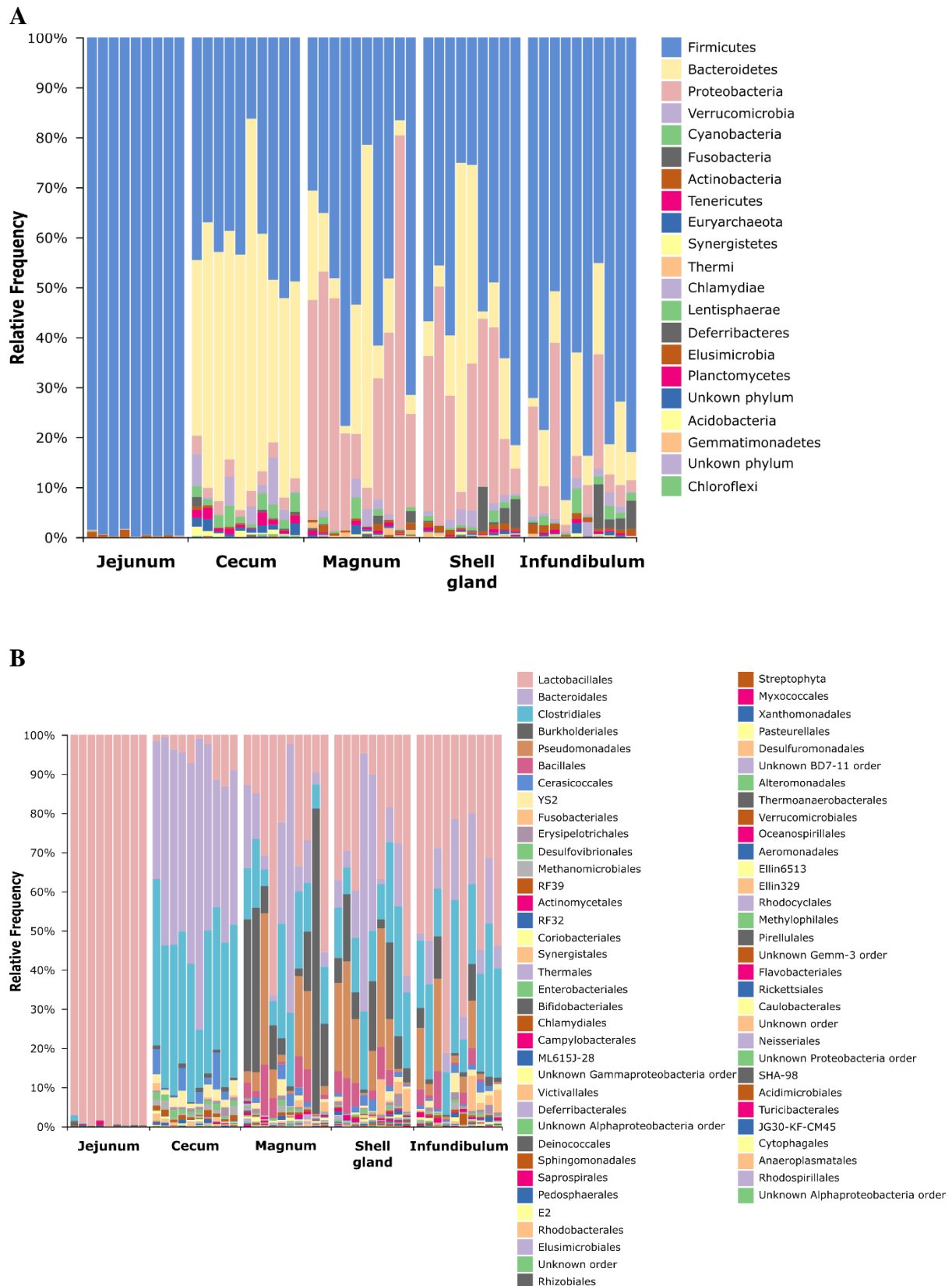


Figure S3: PCoA analysis of all oviduct samples based on Bray-Curtis (A) and Jaccard (B) metrics.

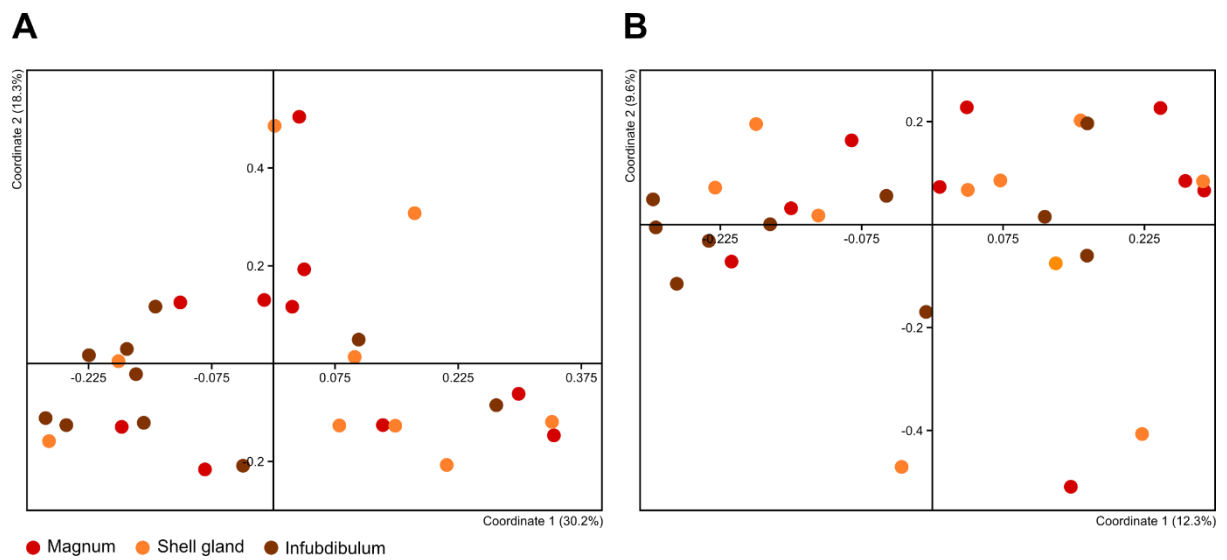


Figure S4: ASVs shared between the different sites. Individual- and pan-based analyses. The number of shared ASVs in each intersection is noted in the table, as well the percentage of the total number of ASVs in parentheses.

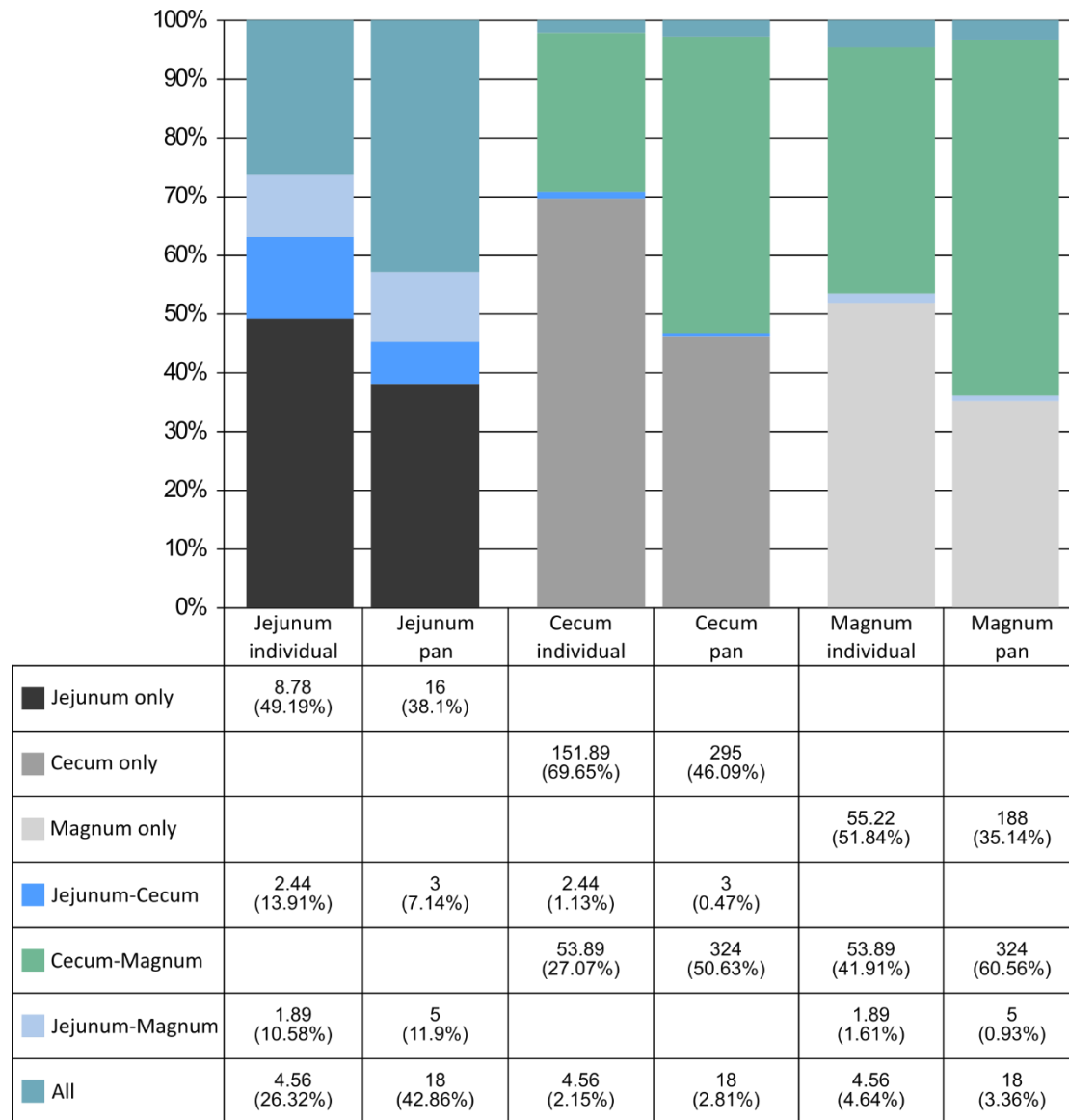


Figure S5: The total relative abundance of ASVs in each intersection, in each of the sites, based on an individual analysis.

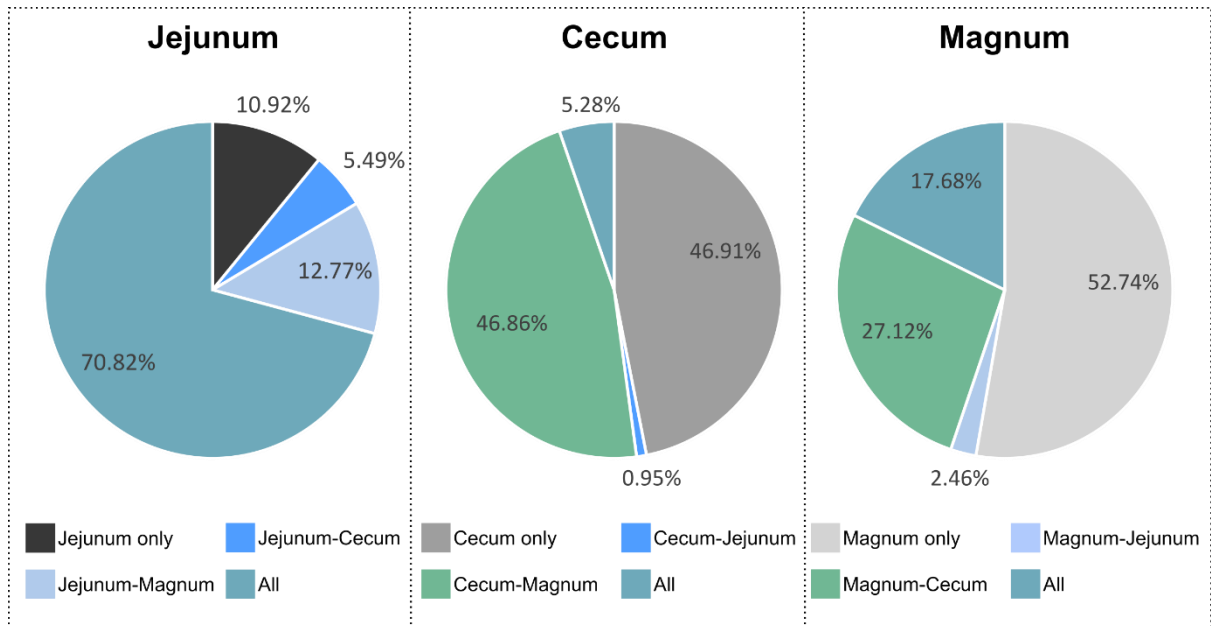


Table S1: ANOSIM Bonferroni-corrected p -values, based on Bray-Curtis metric. Significant p -values are highlighted.

	Jejunum	Cecum	Magnum	Shell gland	Infundibulum
Jejunum		0.001	0.002	0.002	0.001
Cecum	0.001		0.001	0.002	0.001
Magnum	0.002	0.001		1	0.575
Shell gland	0.002	0.002	1		0.791
Infundibulum	0.001	0.001	0.575	0.791	

Table S2: ANOSIM Bonferroni-corrected p -values, based on Jaccard metric. Significant p -values are highlighted.

	Jejunum	Cecum	Magnum	Shell gland	Infundibulum
Jejunum		0.001	0.001	0.001	0.001
Cecum	0.001		0.001	0.001	0.002
Magnum	0.001	0.001		1	0.786
Shell gland	0.001	0.001	1		1
Infundibulum	0.001	0.002	0.786	1	