

Line-up Image Positioning – Supplemental Material B

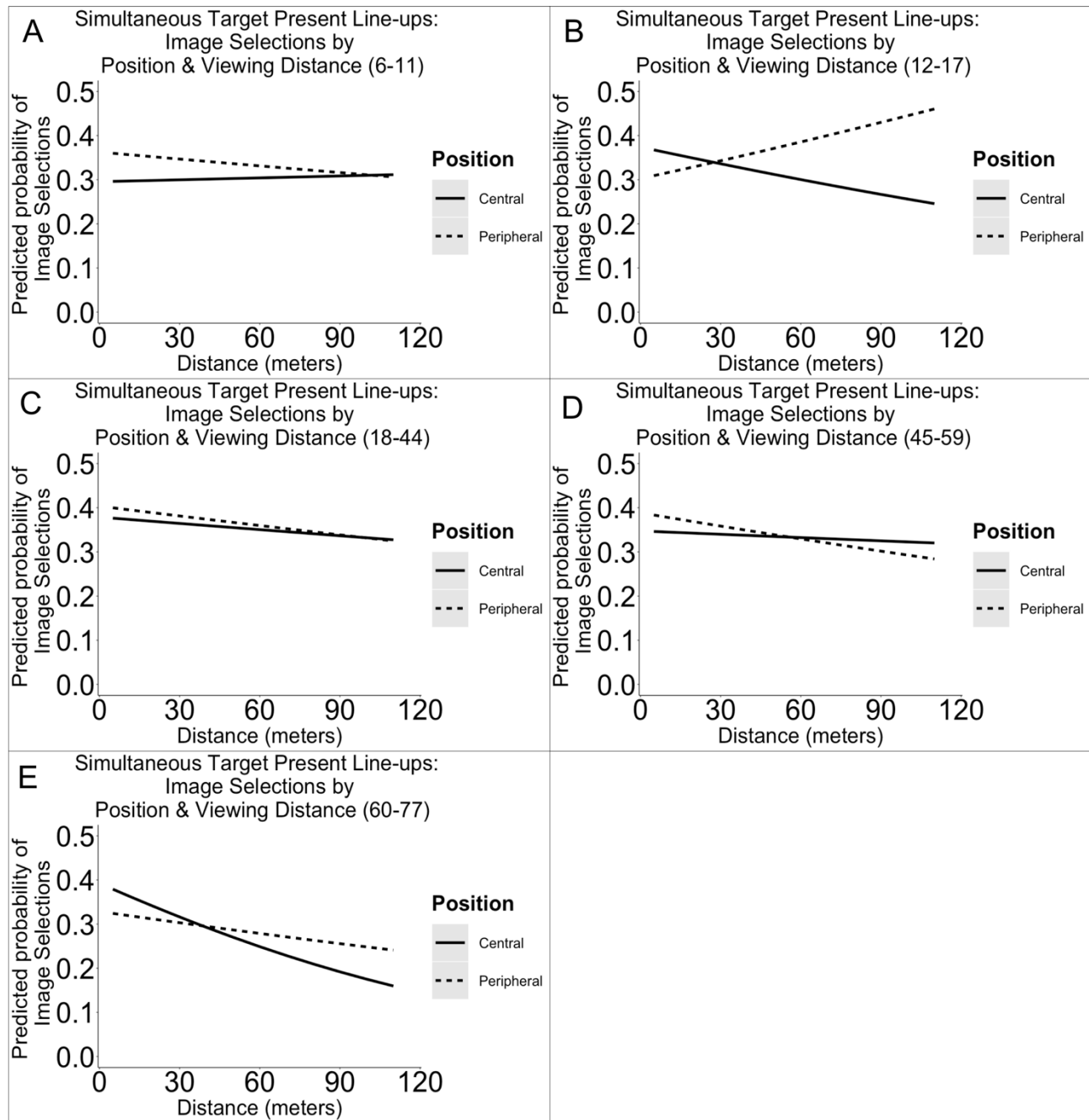


Figure 1. Illustration of the predicted probabilities of image selections in simultaneous target present line-ups per dichotomized line-up position (central versus peripheral), distance, and age group. Each panel represents the probabilities for a single age group: 6-11 (A), 12-17 (B), 18-44 (C), 45-59 (D), 60-77 (E).

Line-up Image Positioning – Supplemental Material B

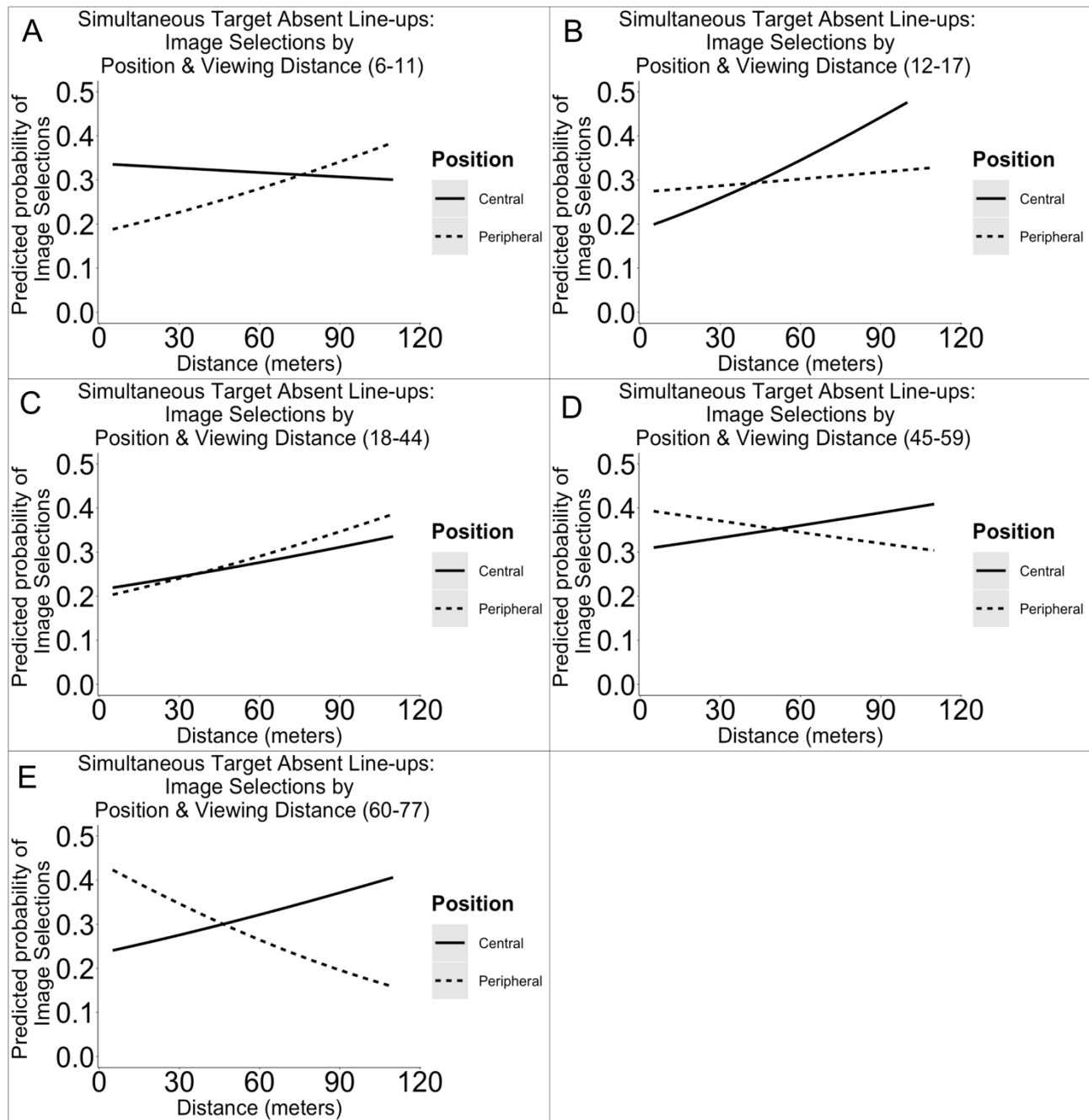


Figure 2. Illustration of the predicted probabilities of image selections in simultaneous target absent line-ups per dichotomized line-up position (central versus peripheral), distance, and age group. Each panel represents the probabilities for a single age group: 6-11 (A), 12-17 (B), 18-44 (C), 45-59 (D), 60-77 (E).

Line-up Image Positioning – Supplemental Material B

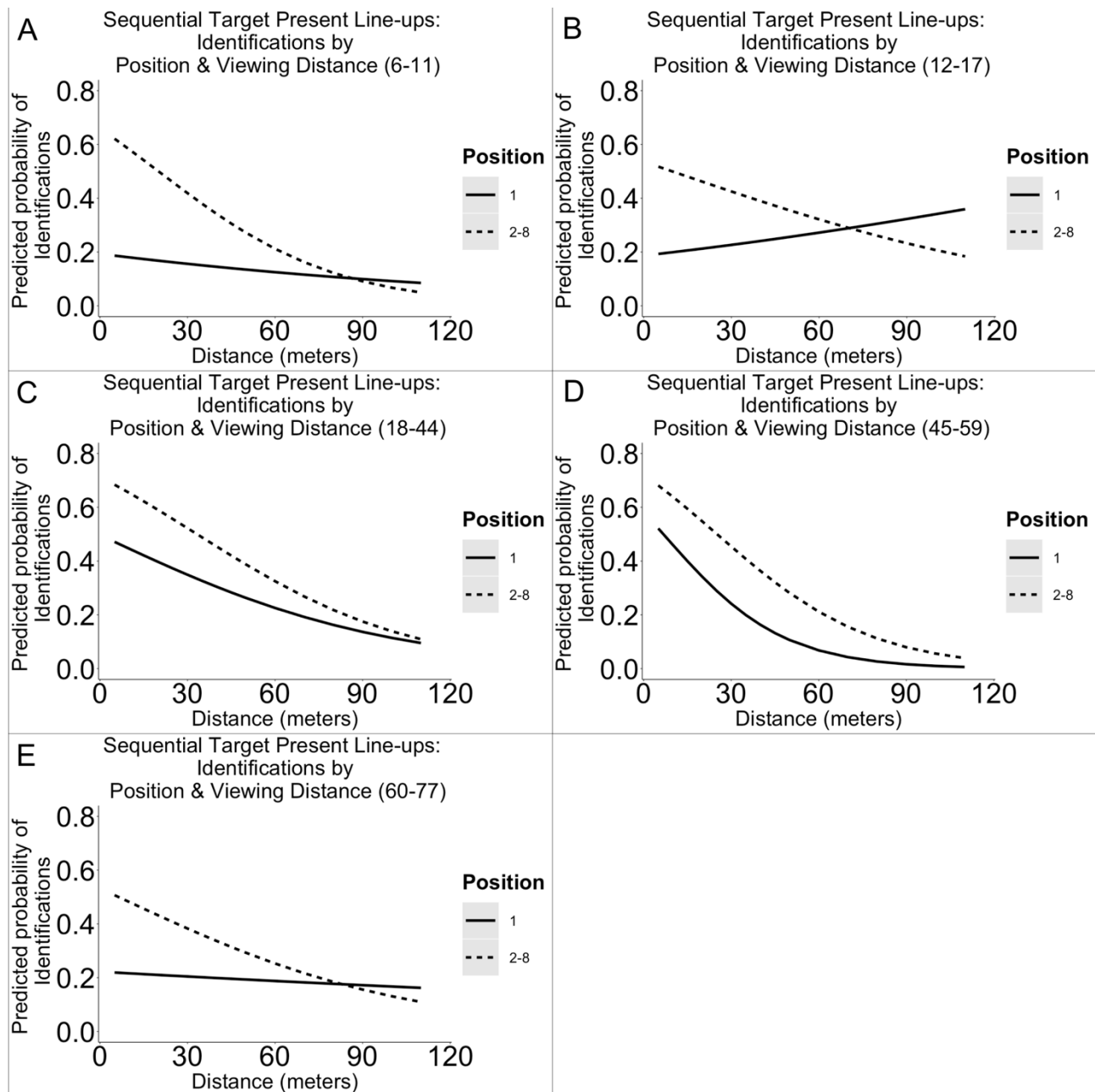


Figure 3. Illustration of the predicted probabilities of target identifications in sequential target present line-ups per dichotomized line-up position, distance, and age group. Each panel represents the probabilities for a single age group: 6-11 (A), 12-17 (B), 18-44 (C), 45-59 (D), 60-77 (E).

Line-up Image Positioning – Supplemental Material B

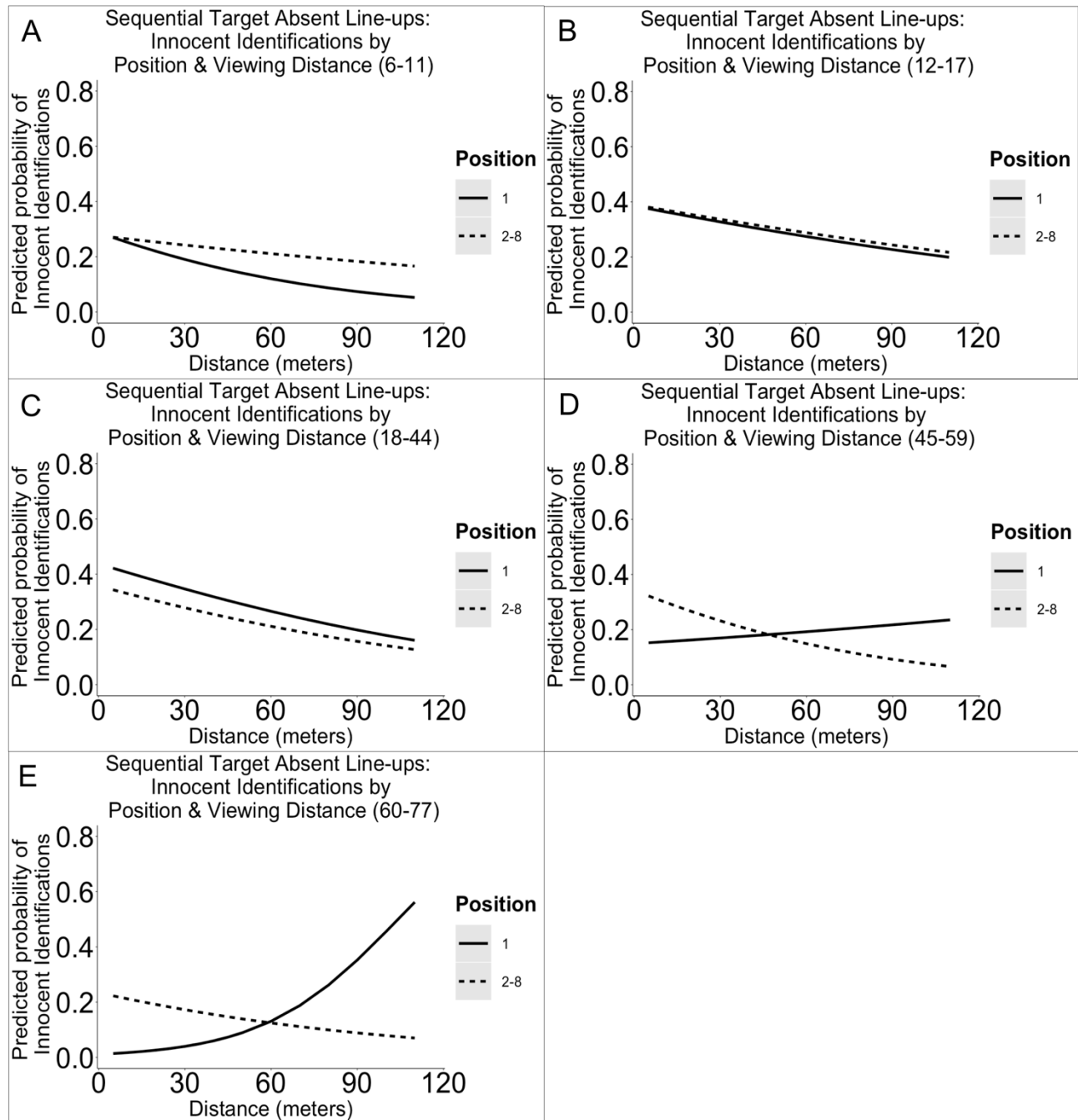


Figure 4. Illustration of the predicted probabilities of innocent identifications in sequential target absent line-ups per dichotomized line-up position, distance, and age group. Each panel represents the probabilities for a single age group: 6-11 (A), 12-17 (B), 18-44 (C), 45-59 (D), 60-77 (E).

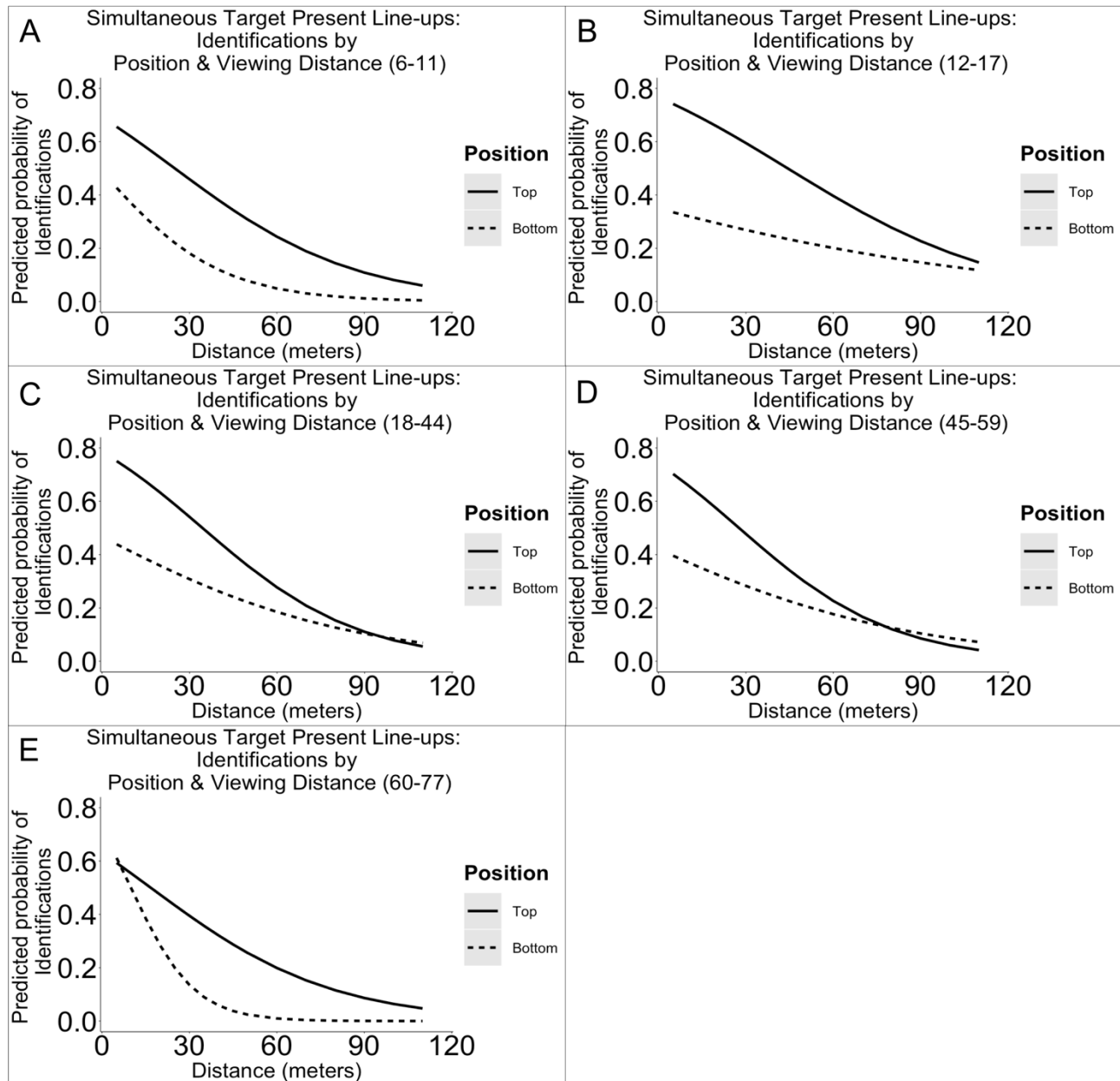


Figure 5. Illustration of the predicted probabilities of target identifications in simultaneous target present line-ups per dichotomized line-up position (top versus bottom), distance, and age group. Each panel represents the probabilities for a single age group: 6-11 (A), 12-17 (B), 18-44 (C), 45-59 (D), 60-77 (E).

Line-up Image Positioning – Supplemental Material B

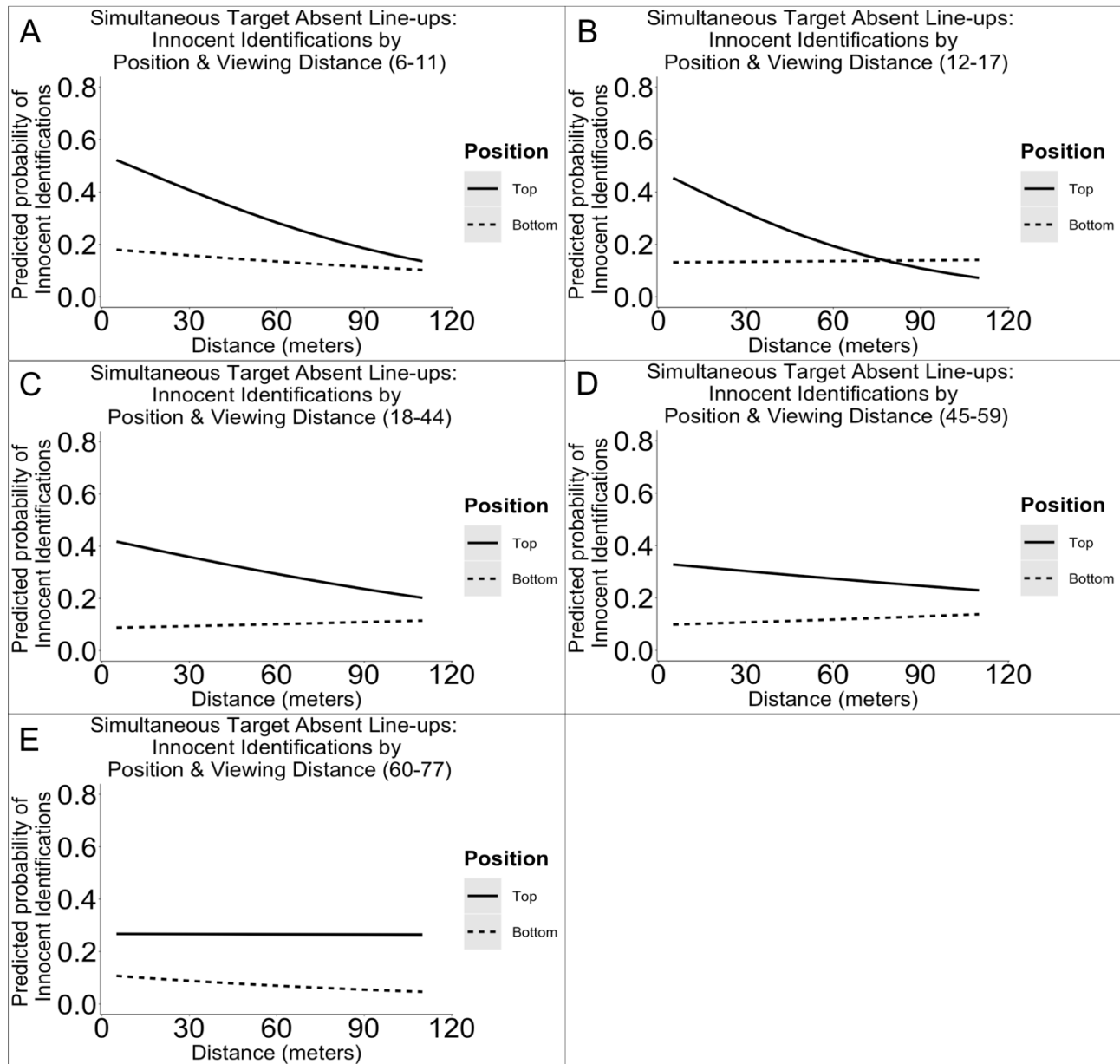


Figure 6. Illustration of the predicted probabilities of innocent identifications in simultaneous target absent line-ups per dichotomized line-up position (top versus bottom), distance, and age group. Each panel represents the probabilities for a single age group: 6-11 (A), 12-17 (B), 18-44 (C), 45-59 (D), 60-77 (E).

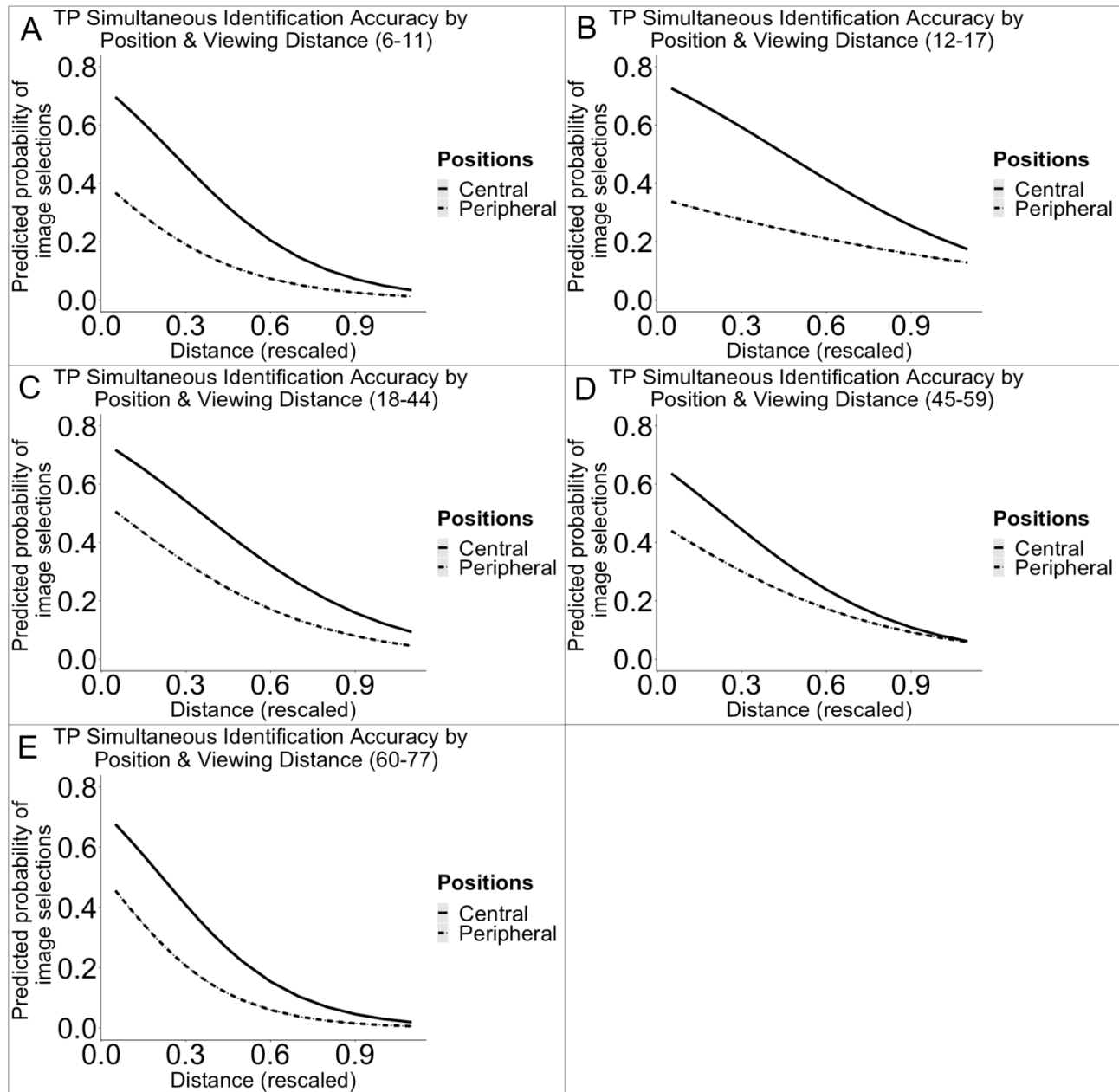


Figure 7. Illustration of the predicted probabilities of target identifications in simultaneous target present line-ups per dichotomized line-up position (central versus peripheral), distance, and age group. Each panel represents the probabilities for a single age group: 6-11 (A), 12-17 (B), 18-44 (C), 45-59 (D), 60-77 (E).

Line-up Image Positioning – Supplemental Material B

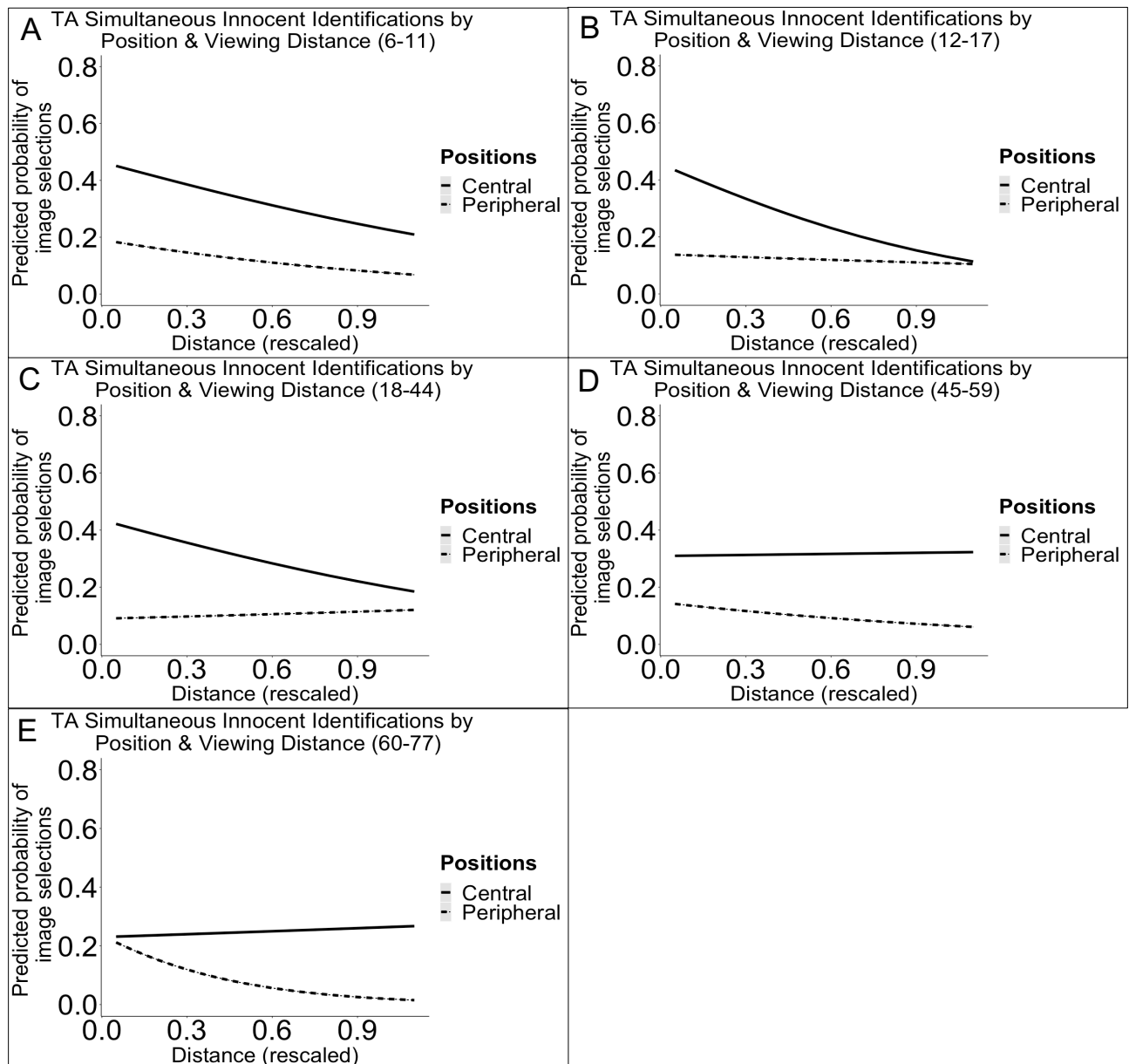


Figure 8. Illustration of the predicted probabilities of innocent identifications in simultaneous target absent line-ups per dichotomized line-up position (central versus peripheral), distance, and age group. Each panel represents the probabilities for a single age group: 6-11 (A), 12-17 (B), 18-44 (C), 45-59 (D), 60-77 (E).