

Supplementary Material

Supplementary Tables

Supplementary Table 1 Characteristics of the patients matched by PSM

Characteristics	Number of patients (%)	PNI<49	PNI≥49	P
Age				
≤60 y	130 (82.3)	64 (81.0)	66 (83.5)	0.677
>60 y	28 (17.7)	15 (19.0)	13 (16.5)	
Sex				
Male	126 (79.7)	61 (77.2)	65 (82.3)	0.428
Female	32 (20.3)	18 (22.8)	14 (17.7)	
ECOG score				
0-1	131 (82.9)	64 (81.0)	67 (84.8)	0.526
≥2	27 (17.1)	15 (19.0)	12 (15.2)	
Serum LDH				
≤245 u/l	117 (74.1)	57 (72.2)	60 (75.9)	0.586
>245 u/l	41 (25.9)	22 (27.8)	19 (24.1)	
B symptoms				
No	98 (62.0)	46 (58.2)	52 (65.8)	0.325
Yes	60 (38.0)	33 (41.8)	27 (34.2)	
Extranodal sites of involvement				
<2	137 (86.7)	66 (83.5)	71 (89.9)	0.241
≥2	21 (13.3)	13 (16.5)	8 (10.1)	
Ann Arbor Stage				
I-II	121 (76.6)	57 (72.2)	64 (81.0)	0.189
III-IV	37 (23.4)	22 (27.8)	15 (19.0)	
Subtype				
UNKTL	146 (92.4)	74 (93.7)	72 (91.1)	0.548
EUNKTL	12 (7.6)	5 (6.3)	7 (8.9)	
Regional lymph node involvement				
No	98 (62.0)	46 (58.2)	52 (65.8)	0.325
Yes	60 (38.0)	33 (41.8)	27 (34.2)	
KPI score				
0-1	102 (64.6)	45 (57.0)	57 (72.2)	0.046
2-4	56 (35.4)	34 (43.0)	22 (27.8)	
IPI score				
0-1	122 (77.2)	60 (75.9)	62 (78.5)	0.704
2-5	36 (22.8)	19 (24.1)	17 (21.5)	
PIT score				
0-1	143 (90.5)	71 (89.9)	72 (91.1)	0.786
2-4	15 (9.5)	8 (10.1)	7 (8.9)	
PINK score				
0	86 (54.4)	41 (51.9)	45 (57.0)	0.413
1	35 (22.2)	16 (20.3)	19 (24.1)	

≥2	37 (23.4)	22 (27.8)	15 (19.0)	
Treatment modalities				
RT alone	13 (8.2)	7 (8.9)	6 (7.6)	0.533
CT alone	52 (32.9)	29 (36.7)	23 (29.1)	
CRT	93 (32.9)	43 (54.4)	50 (63.3)	
CT regimen				
L-Asp-based	75 (51.7)	37 (51.4)	38 (52.1)	1.000
Other	70 (48.3)	42 (48.6)	35 (47.9)	

PNI, Prognostic nutritional index; **LDH**, lactate dehydrogenase; **ECOG**, Eastern Cooperative Oncology Group; **IPI**, International Prognostic Index; **KPI**, Korean Prognostic Index; **PINK**, prognostic index of natural killer lymphoma; **PTI**, Prognostic Index for T-cell lymphoma; **RT**, radiotherapy; **CT**, Chemotherapy; **CRT**, Chemoradiotherapy; **L-Asp**, L-Asparaginase.

Supplementary Table 2 Univariate and multivariate analysis of the PSM patients

Factors	OS			PFS		
	Univariate analysis <i>p</i> value	Multivariate analysis RR(95%CI) <i>p</i> value		Univariate analysis <i>p</i> value	Multivariate analysis RR(95%CI) <i>p</i> value	
Age						
>60 y vs. ≤60 y	0.129			0.308		
Sex						
Female vs. Male	0.225			0.240		
ECOG score						
≥2 vs. 0-1	<0.001*	2.005(1.149-3.499)	0.014	<0.001*	2.194(1.290-3.729)	0.004
Ann Arbor Stage						
III-IV vs. I-II	0.294			0.664		
B symptoms						
yes vs. no	0.494			0.596		
Extranodal sites of involvement						
≥2 vs. <2	0.213			0.370		
Regional lymph node involvement						
yes vs. no	0.049*			0.110		
Subtype						
EUNKTL vs. UNKTL	0.571			0.897		
KPI						
2-4 vs. 0-1	0.123			0.229		
PIT						
2-4 vs. 0-1	<0.001*	2.481(1.268-4.854)	0.008	0.003*		
IPI						
2-5 vs. 0-1	0.071*			0.264		
PINK						
0						
1						
≥2	0.027*			0.123		
Neutrophil						
>3.0 x10 ⁹ /l vs. ≤3.0 x10 ⁹ /l	0.230			0.333		
Baseline white cell count						

>5.0 x10 ⁹ /l vs. ≤5.0 x10 ⁹ /l	0.533			0.601		
Platelets						
>200 x10 ⁹ /l vs. ≤200 x10 ⁹ /l	0.462			0.690		
Serum LDH						
>245u/l vs. ≤245u/l	0.085*			0.284		
Hb						
>120g/l vs. ≤120g/l	0.096*			0.155		
PNI						
≥49 vs. <49	0.004*	0.522(0.318-0.858)	0.010	0.019*	0.609(0.385-0.963)	0.034
RT						
received vs. unreceived	0.037*			0.015*	0.618(0.390-0.981)	0.041
L-Asp-based						
CT						
received vs. unreceived	0.003*	0.510(0.304-0.856)	0.011	0.003*	0.524(0.326-0.843)	0.008

PNI, Prognostic nutritional index; **LDH**, lactate dehydrogenase; **ECOG**, Eastern Cooperative Oncology Group; **IPI**, International Prognostic Index; **KPI**, Korean Prognostic Index; **PINK**, Prognostic index of natural killer lymphoma; **PTI**, Prognostic Index for T-cell lymphoma; **RT**, radiotherapy; **L-Asp**, L-Asparaginase; **CT**, Chemotherapy.

Supplementary Table 3 Univariate and multivariate analysis of the patients treated with L-Asp-based chemotherapy.

Factors	OS			PFS		
	Univariate analysis <i>p</i> value	Multivariate analysis		Univariate analysis <i>p</i> value	Multivariate analysis	
		RR(95%CI)	<i>p</i> value		RR(95%CI)	<i>p</i> value
Age	0.995			0.925		
Sex	0.910			0.571		
ECOG score	0.037*	2.324(0.972-5.556)	0.058	0.069*	2.139(0.917-4.993)	0.079
Ann Arbor Stage	0.072*			0.263		
B symptoms	0.211			0.384		
Extranodal sites of involvement	0.191			0.421		
Regional lymph node involvement	0.074*	2.233(1.026-4.864)	0.043	0.092*	1.980(0.961-4.079)	0.064
Subtype	0.990			0.785		
KPI	0.066*			0.127		
PIT	0.041*			0.086*		
IPI	0.037*			0.132		
PINK	0.637			0.971		
Neutrophils	0.808			0.437		
Baseline white cell count	0.129			0.123		
Platelets	0.572			0.903		

Serum LDH	0.039*			0.198		
Hb	0.778			0.853		
PNI	0.006*	0.327(0.137-0.782)	0.012	0.035*	0.461(0.221-0.961)	0.039
RT	0.094*			0.116		

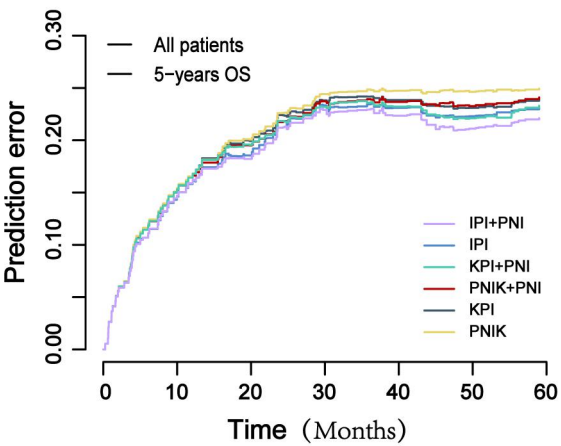
PNI, Prognostic nutritional index; **LDH**, lactate dehydrogenase; **ECOG**, Eastern Cooperative Oncology Group; **IPI**, International Prognostic Index; **KPI**, Korean Prognostic Index; **PINK**, Prognostic index of natural killer lymphoma; **PTI**, Prognostic Index for T-cell lymphoma; **RT**, radiotherapy.

Supplementary Table 4 The variables and definitions of different models.

Model and definition (total point)	Variable	point
KPI		
Group1 (0)	Ann Arbor stage (III-IV vs. I-II)	1
Group2 (1)	Elevated LDH (yes vs. no)	1
Group3 (2)	B symptoms (yes vs. no)	1
Group4 (≥ 3)	Regional lymph node (yes vs. no)	1
IPI		
Low (0-1)	Age (>60 years vs. ≤ 60 years)	1
Intermediate low (2)	Ann Arbor stage (III-IV vs. I-II)	1
Intermediate high (3)	ECOG score (≥ 2 vs. 0-1)	1
High (≥ 4)	Elevated LDH (yes vs. no)	1
	Distant extranodal involvement (≥ 2 vs. 0-1)	1
PINK		
Low risk (0)	Age (>60 years vs. ≤ 60 years)	1
Intermediate risk (1)	Ann Arbor stage (III-IV vs. I-II)	1
High risk (≥ 2)	Distant extranodal involvement (yes vs. no)	1
	Nonnasal disease (yes vs. no)	1
KPI+PNI		
Group1 (0)	Ann Arbor stage (III-IV vs. I-II)	1
Group2 (1)	Elevated LDH (yes vs. no)	1
Group3 (2)	B symptoms (yes vs. no)	1
Group4 (≥ 3)	Regional lymph node (yes vs. no)	1
	PNI (PNI <49 vs. PNI ≥ 49)	1
IPI+PNI		
Low (0-1)	Age (>60 years vs. ≤ 60 years)	1
Intermediate low (2)	Ann Arbor stage (III-IV vs. I-II)	1
Intermediate high (3)	ECOG score (≥ 2 vs. 0-1)	1
High (≥ 4)	Elevated LDH (yes vs. no)	1
	Distant extranodal involvement (≥ 2 vs. 0-1)	1
	PNI (PNI <49 vs. PNI ≥ 49)	1
PINK+PNI		
Low risk (0)	Age (>60 years vs. ≤ 60 years)	1
Intermediate low (1)	Ann Arbor stage (III-IV vs. I-II)	1
Intermediate high (2)	Distant extranodal involvement (yes vs. no)	1
High risk (≥ 3)	Nonnasal disease (yes vs. no)	1
	PNI (PNI <49 vs. PNI ≥ 49)	1

PNI, Prognostic nutritional index; **LDH**, lactate dehydrogenase; **ECOG**, Eastern Cooperative Oncology Group; **IPI**, International Prognostic Index; **KPI**, Korean Prognostic Index; **PINK**, Prognostic index of natural killer lymphoma.

Supplementary Figures



Supplementary Figure 1. Prognostic power evaluation of PNI. The IBS values of different models.