

Supplementary Materials

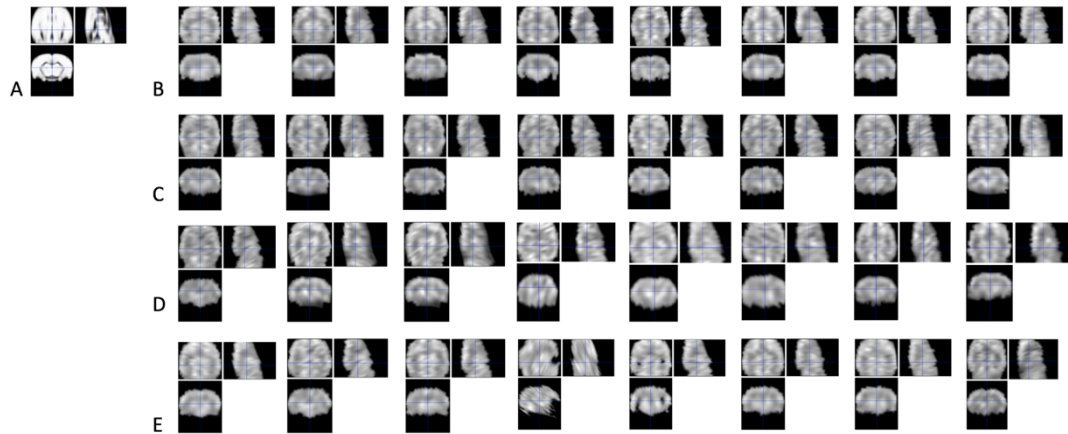


Figure S1. The results of normalization on the 4th week following brachial plexus avulsion injury (BPAI) (i.e., 3 weeks of EA/sham EA intervention).

(A) The rat brain template used for normalization. (B~E) The post-normalization brain images of rats in EA (B), sham EA (C), normal (D), and BPAI model (E) groups.

EA: electroacupuncture

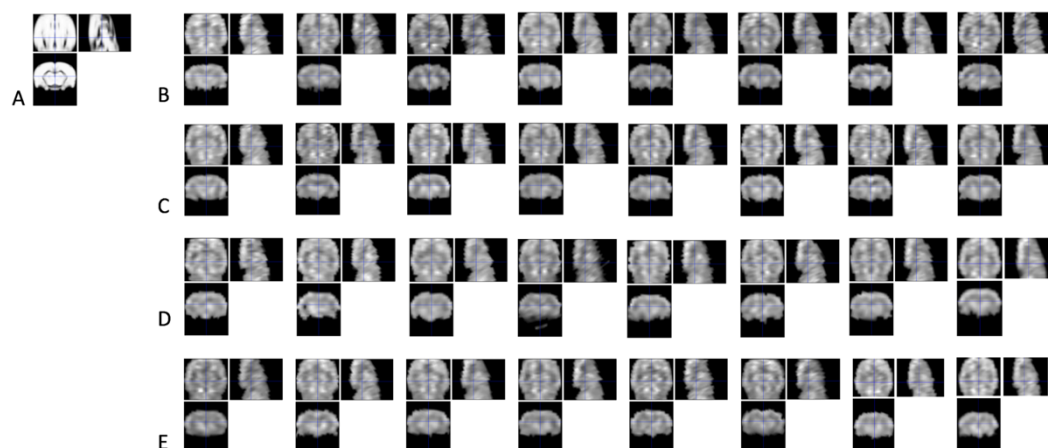


Figure S2. The results of normalization on the 12th week following brachial plexus avulsion injury (BPAI) (i.e., 11 weeks of EA/sham EA intervention).

(A) The rat brain template used for normalization. (B~E) The post-normalization brain images of rats in EA (B), sham EA (C), normal (D), and BPAI model (E) groups.

EA: electroacupuncture

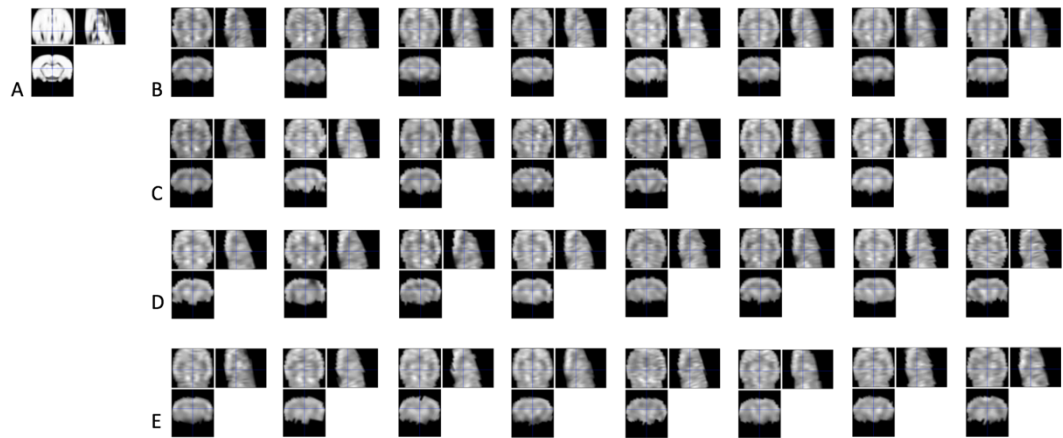


Figure S3. The results of normalization on the 16th week following brachial plexus avulsion injury (BPAI) (i.e., 4 weeks after EA/sham EA intervention).

(A) The rat brain template used for normalization. (B~E) The post-normalization brain images of rats in EA (B), sham EA (C), normal (D), and BPAI model (E) groups.

EA: electroacupuncture