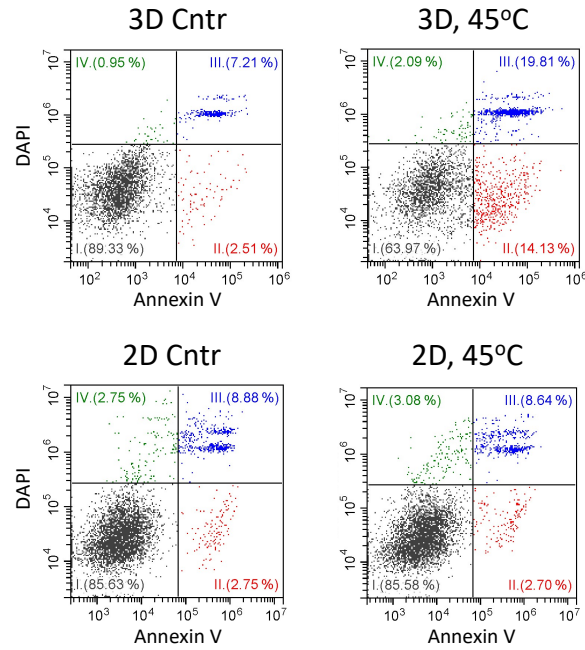


**Figure 1S. Wound closure in rat after 2D and 3D eMSC transplantation.**

**(A)** The wound size dynamics derived from the calculation of the pixel area of the wounds. Data are shown as mean  $\pm$  SD (N = 4).

**(B)** Histological slices stained by hematoxylin and eosin at day 7 after the transplantation of 2D (left image) and 3D (right image) eMSCs, a- granulation tissue, b – epidermis, c - scab consisting of fibrin with leukocyte infiltration; 200x magnification.



**Figure 2S. Apoptosis assay of 2D and 3D eMSCs exposed to heat shock.** Annexin-V/DAPI flow cytometry histograms measured in 2D and 3D eMSCs (passage 8) exposed to heat shock (test was performed 6 hours after cell heating). Colour marking: black, viable AnV-/DAPI- cells; red, early apoptotic AnV+/DAPI- cell fraction; blue, late apoptotic AnV+/DAPI+ cell fraction; green, non-apoptotic AnV-/DAPI- dead cells.