

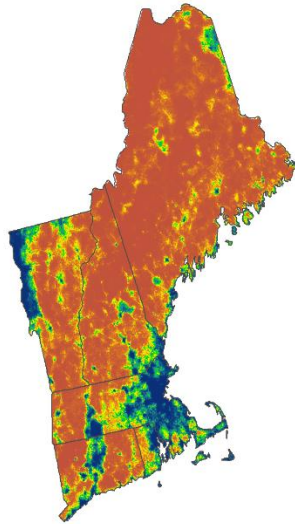
## Supplementary Material

### 1. Supplementary Figures

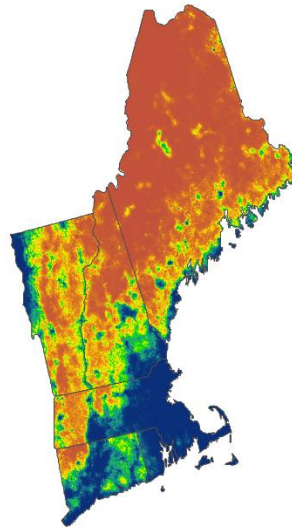
**Figure S1.** Scenario-simulated distributions of 10 wildlife species throughout New England as projected by current (2010) conditions and each of the NELFP scenarios: (B) Recent Trends, (C) Connected Communities, (D) Yankee Cosmopolitan, (E) Go It Alone, and (F) Growing Global. Distribution was projected as occurrence probabilities derived from species distribution models developed through expert elicitation and mixed modeling methods (see Pearman-Gillman et al., 2020).

**Figure S1.** American black bear

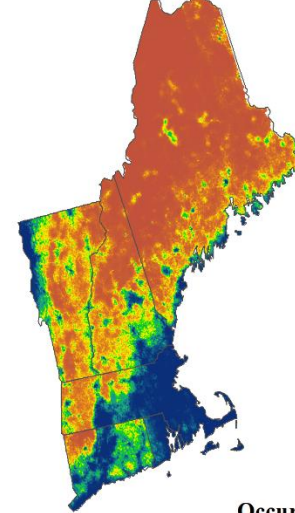
A. Current



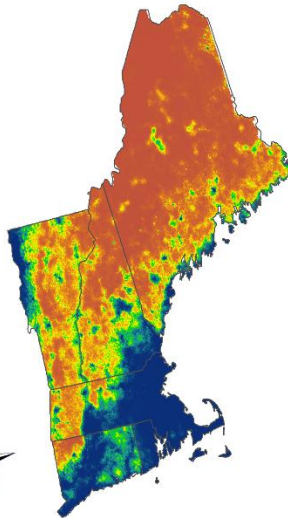
B. Recent Trends



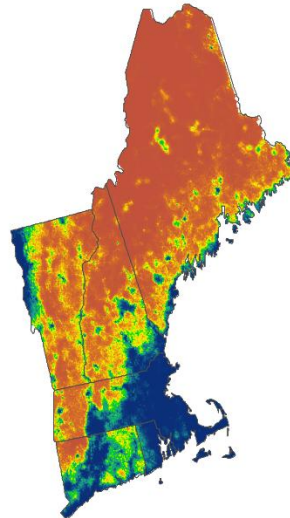
C. Connected Communities



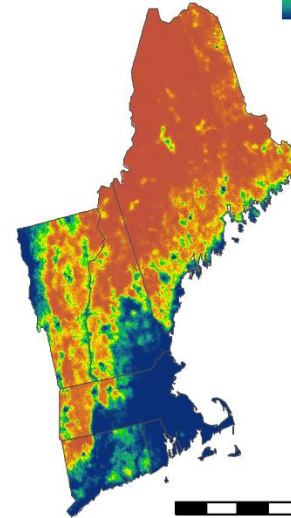
D. Yankee Cosmopolitan



E. Go It Alone



F. Growing Global



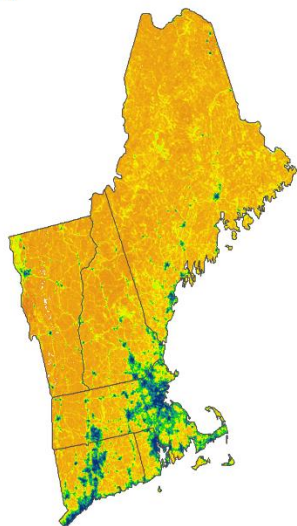
**Occurrence Probability**  
High: 1.00  
Low: 0.00



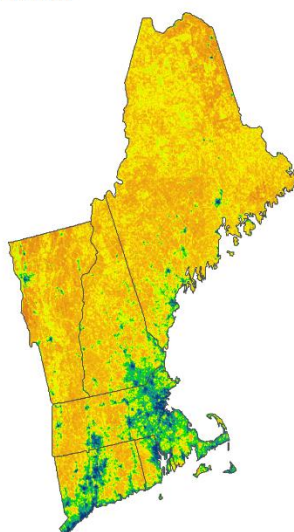
0 50 100 150 200 km

**Figure S1. Bobcat**

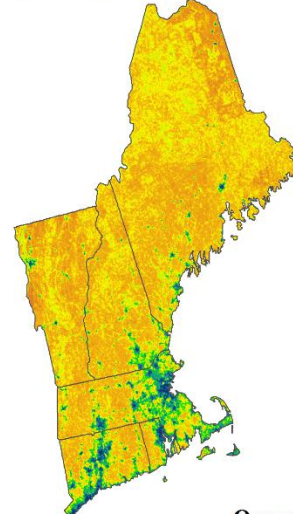
A. Current



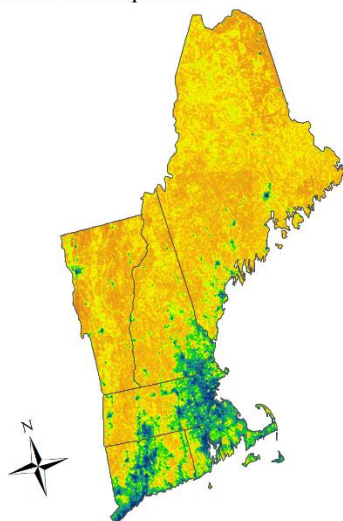
B. Recent Trends



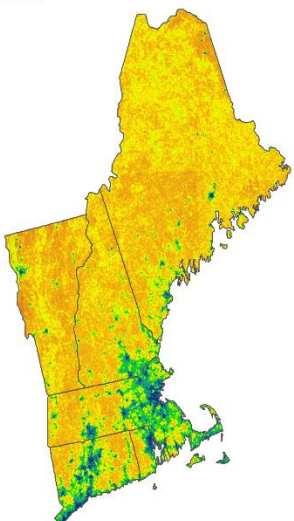
C. Connected Communities



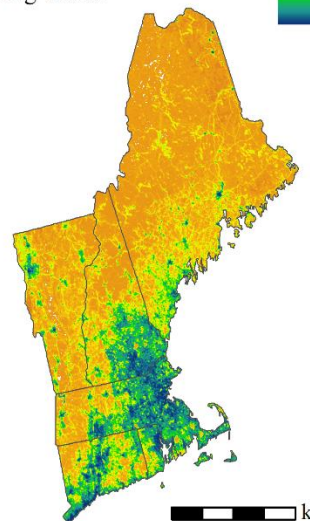
D. Yankee Cosmopolitan



E. Go It Alone



F. Growing Global

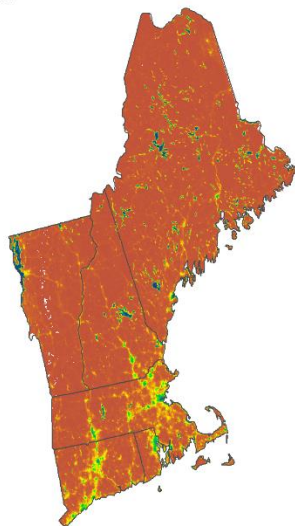


**Occurrence Probability**  
High: 0.93  
Low: 0.09

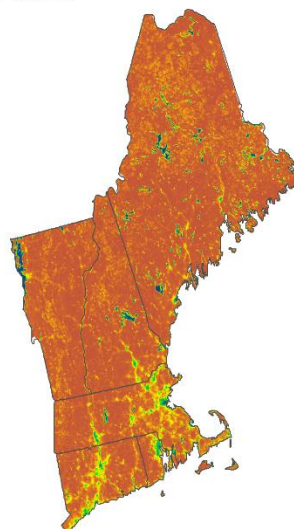
0 50 100 150 200 km

**Figure S1. Coyote**

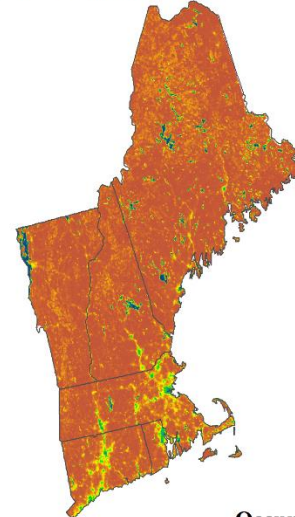
A. Current



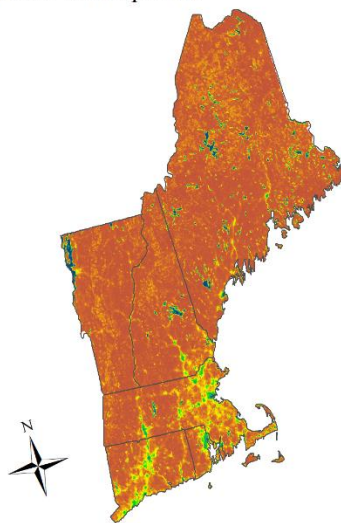
B. Recent Trends



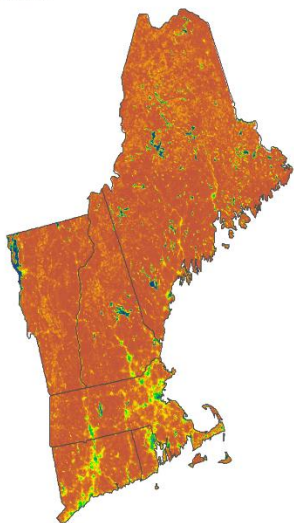
C. Connected Communities



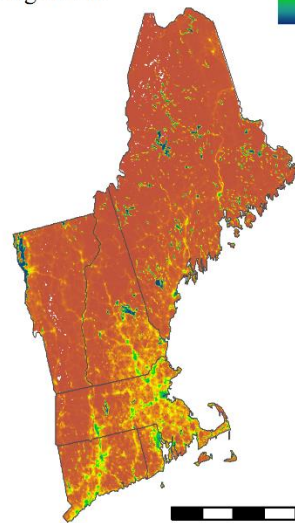
D. Yankee Cosmopolitan



E. Go It Alone



F. Growing Global

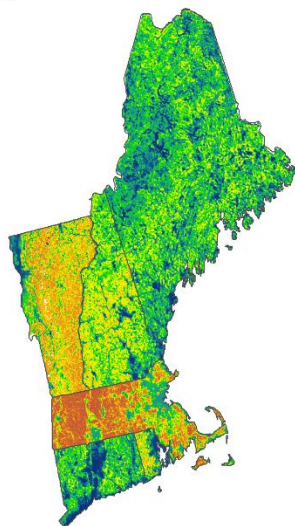


Occurrence Probability  
High: 1.00  
Low: 0.02

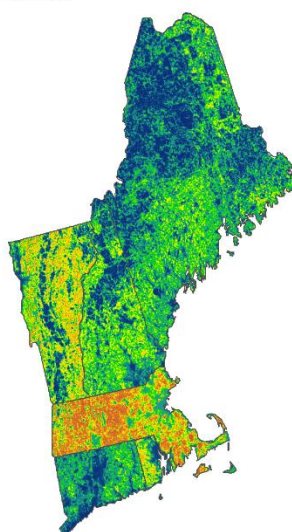
0 50 100 150 200 km

**Figure S1.** Gray fox

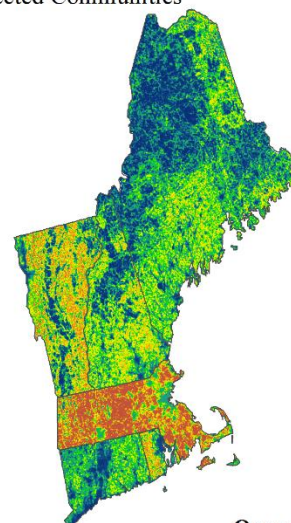
A. Current



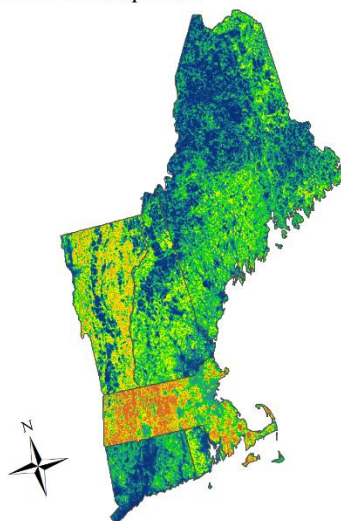
B. Recent Trends



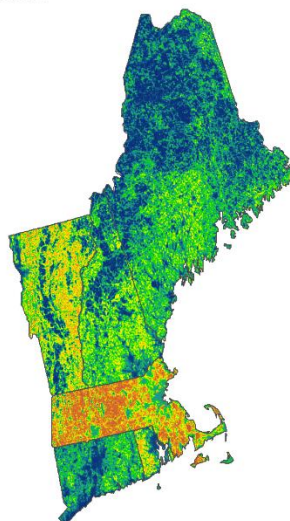
C. Connected Communities



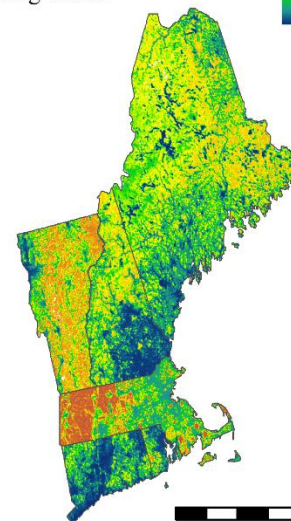
D. Yankee Cosmopolitan



E. Go It Alone



F. Growing Global



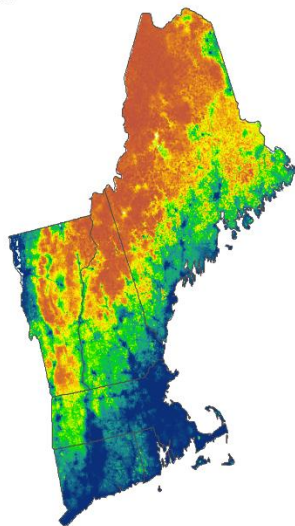
Occurrence Probability  
High: 0.99  
Low: 0.00



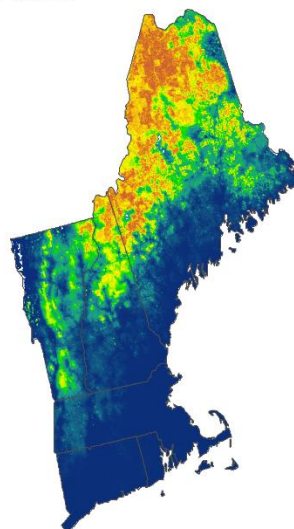
0 50 100 150 200 km

**Figure S1. Moose**

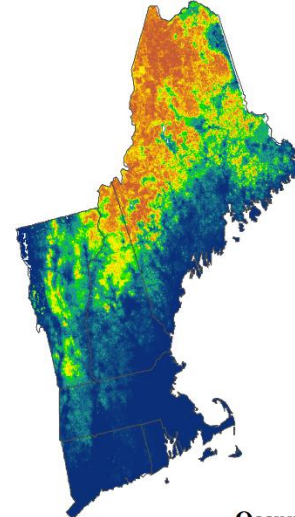
A. Current



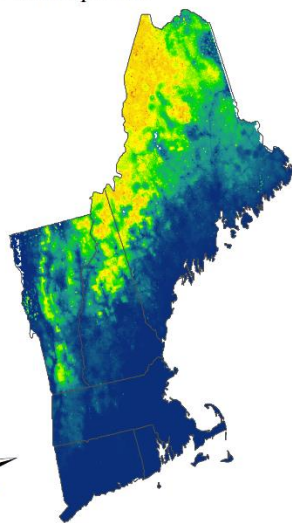
B. Recent Trends



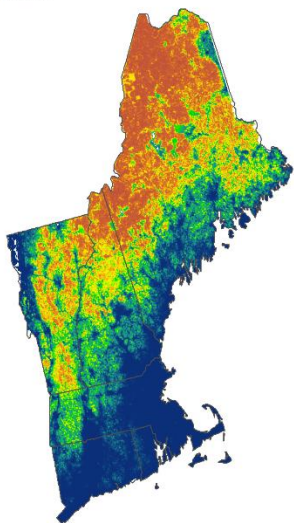
C. Connected Communities



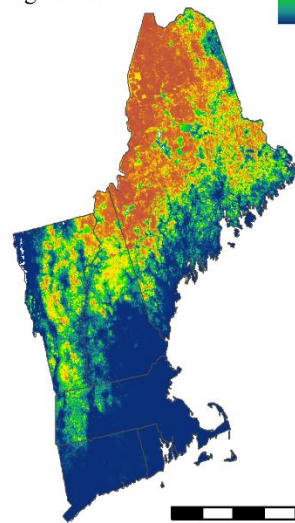
D. Yankee Cosmopolitan



E. Go It Alone



F. Growing Global



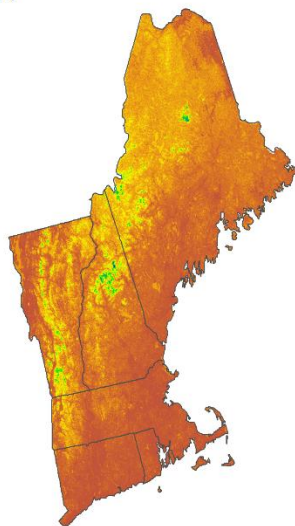
Occurrence Probability  
High: 1.00  
Low: 0.00



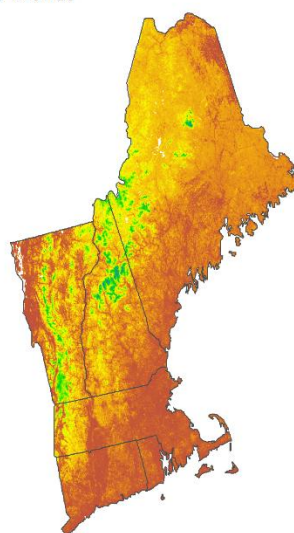
0 50 100 150 200 km

**Figure S1. Raccoon**

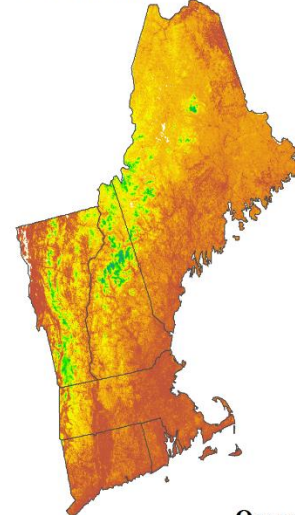
A. Current



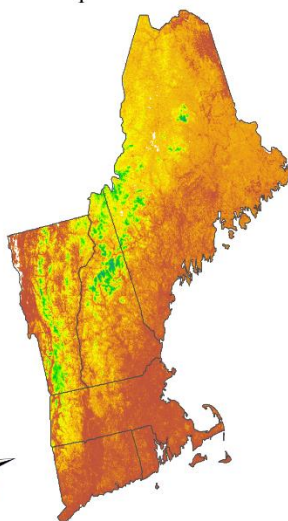
B. Recent Trends



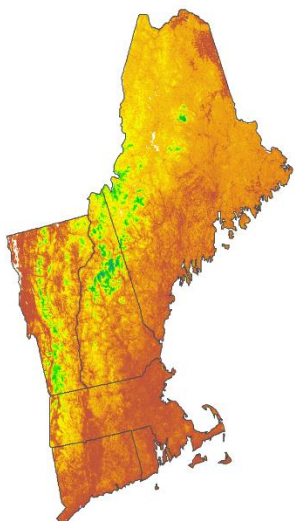
C. Connected Communities



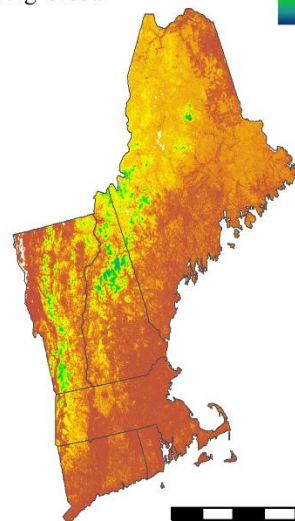
D. Yankee Cosmopolitan



E. Go It Alone



F. Growing Global



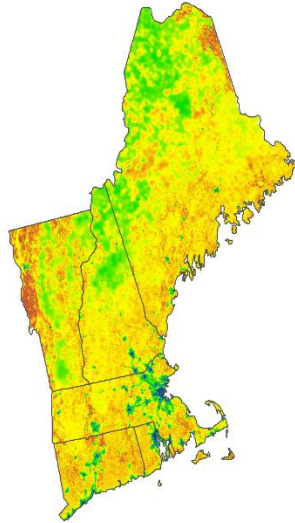
**Occurrence Probability**  
High: 1.00  
Low: 0.12



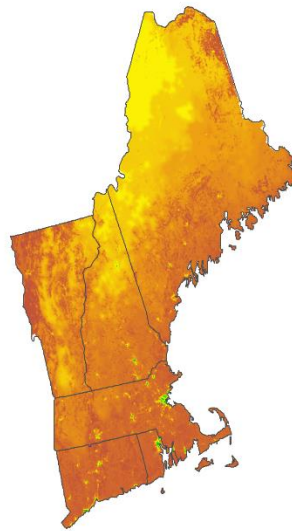
0 50 100 150 200 km

**Figure S1. Red fox**

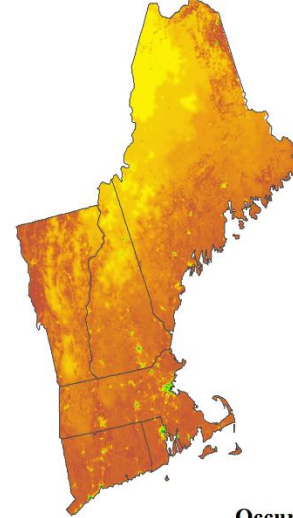
A. Current



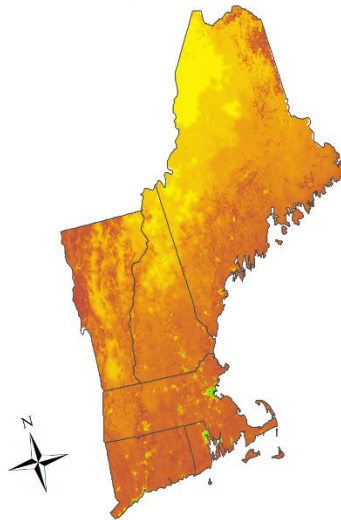
B. Recent Trends



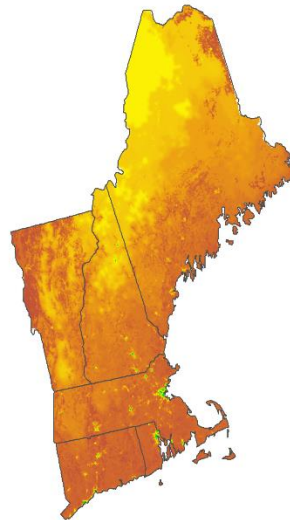
C. Connected Communities



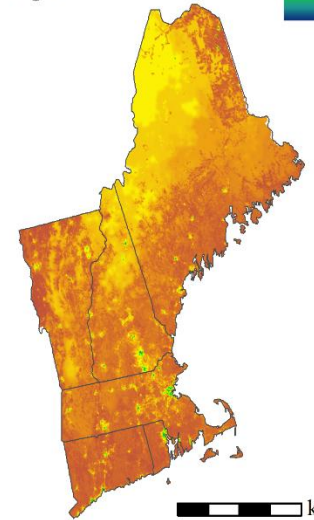
D. Yankee Cosmopolitan



E. Go It Alone



F. Growing Global

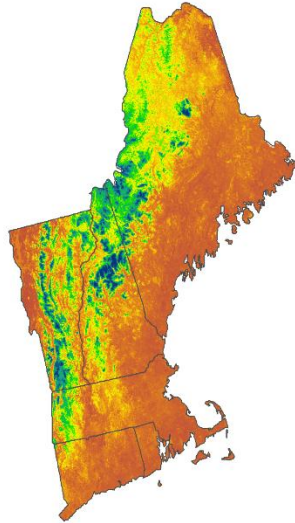


**Occurrence Probability**  
High: 1.00  
Low: 0.06

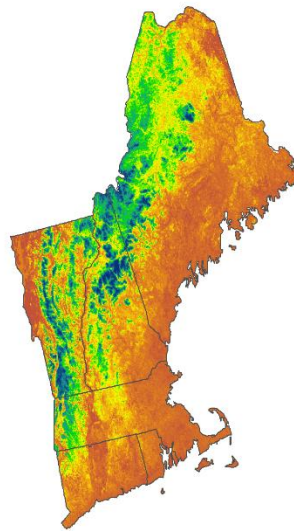
0 50 100 150 200 km

**Figure S1.** Striped skunk

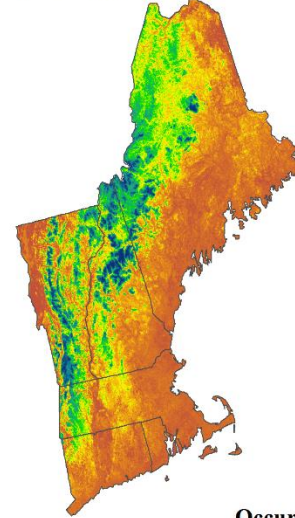
A. Current



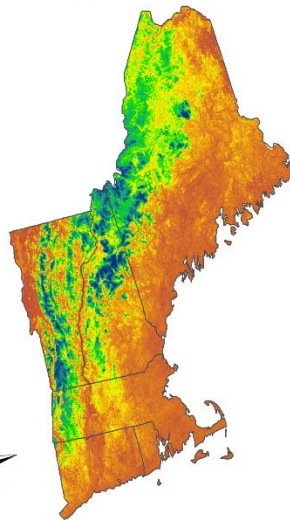
B. Recent Trends



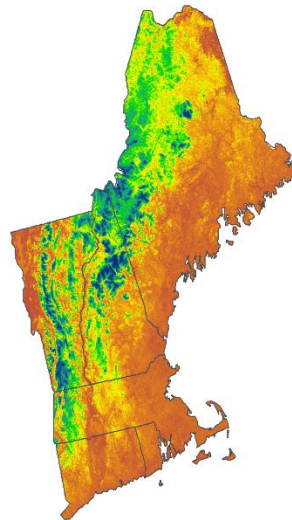
C. Connected Communities



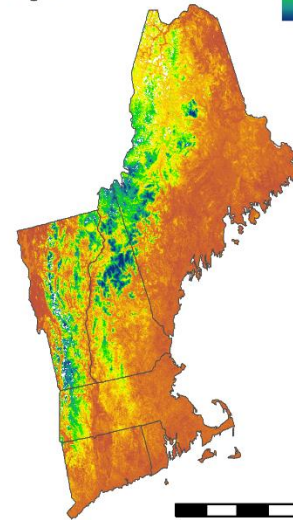
D. Yankee Cosmopolitan



E. Go It Alone



F. Growing Global



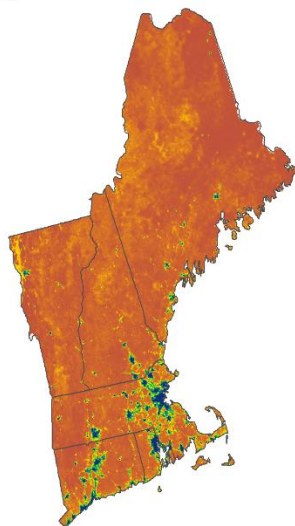
**Occurrence Probability**  
High: 1.00  
Low: 0.00



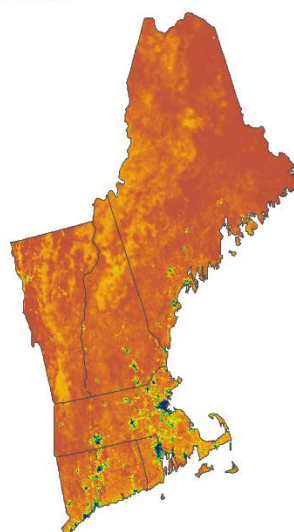
0 50 100 150 200 km

**Figure S1.** White-tailed deer

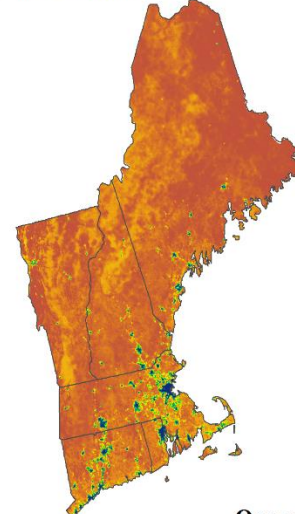
A. Current



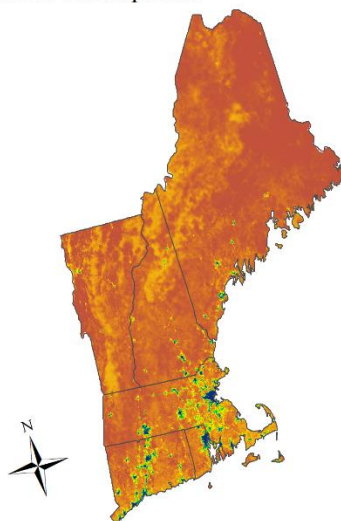
B. Recent Trends



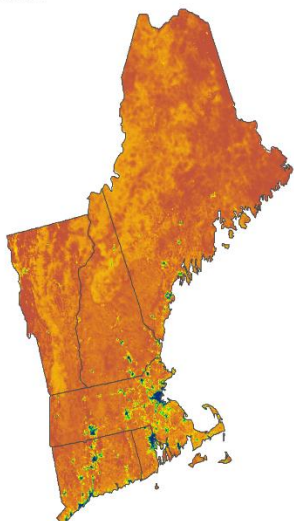
C. Connected Communities



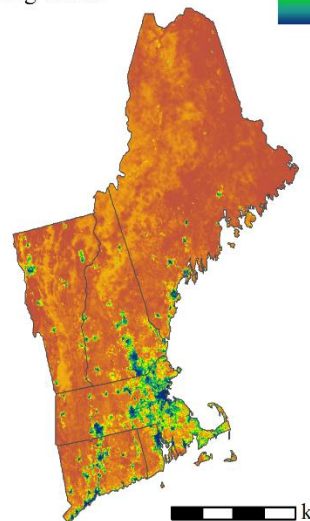
D. Yankee Cosmopolitan



E. Go It Alone



F. Growing Global

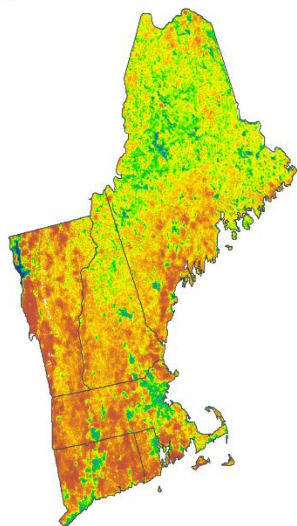


Occurrence Probability  
High: 1.00  
Low: 0.00

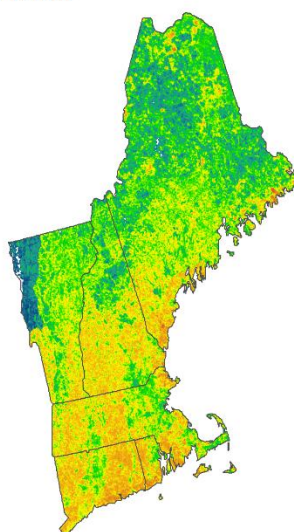
0 50 100 150 200 km

**Figure S1. Wild turkey**

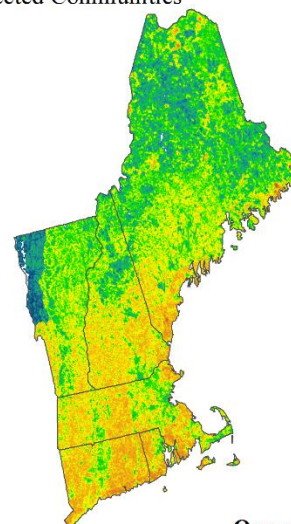
A. Current



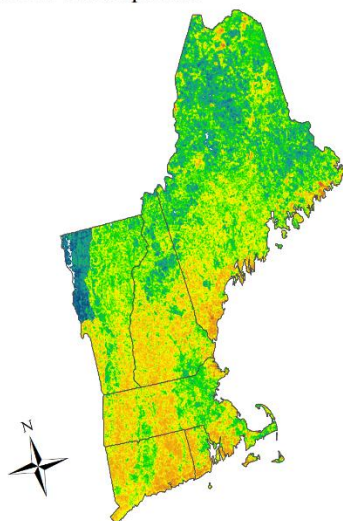
B. Recent Trends



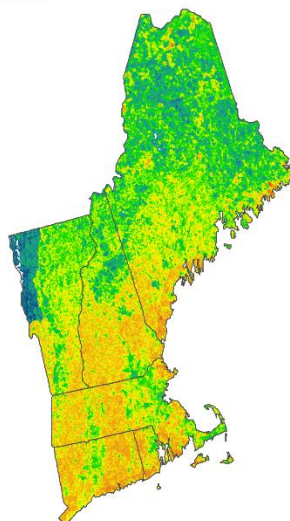
C. Connected Communities



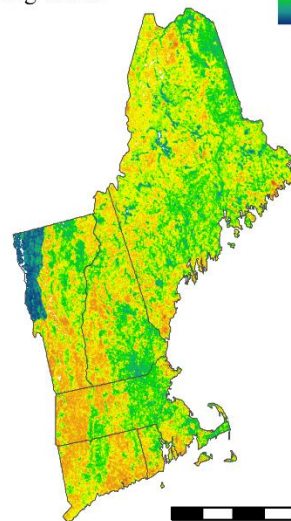
D. Yankee Cosmopolitan



E. Go It Alone



F. Growing Global



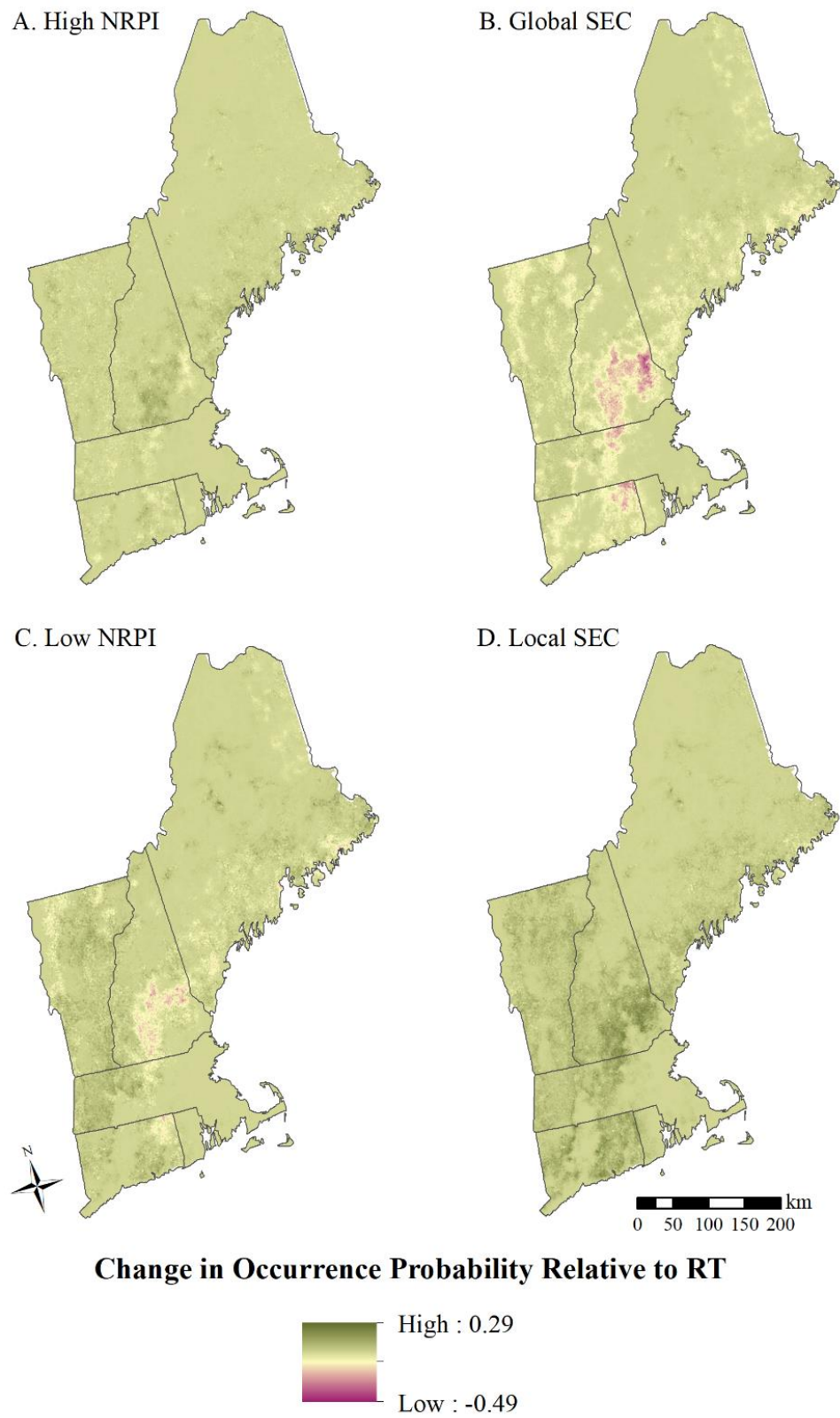
**Occurrence Probability**  
High: 1.00  
Low: 0.03



0 50 100 150 200 km

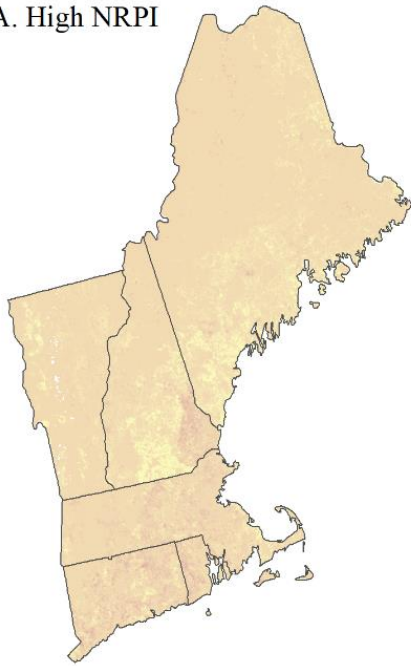
**Figure S2.** Driver isolated distribution change maps for 10 wildlife species identifying areas within the New England region of the northeastern United States where species occurrence was impacted by each isolated driver of landscape change: (A) High Natural Resource Planning and Innovation (NRPI), (B) Global Socio-Economic Connectedness (SEC), (C) Low NRPI, and (D) Local SEC. Map values indicate the difference from the Recent Trends (RT) baseline and highlight areas where each driver increased or decreased species occurrence likelihood relative to the occurrence likelihood expected under the RT scenario.

**Figure S2.** American black bear

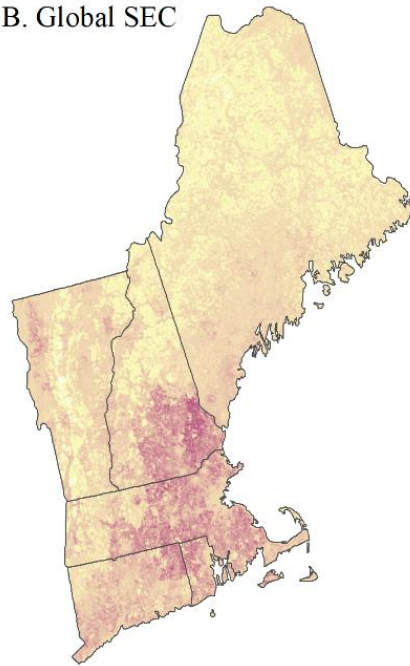


**Figure S2. Bobcat**

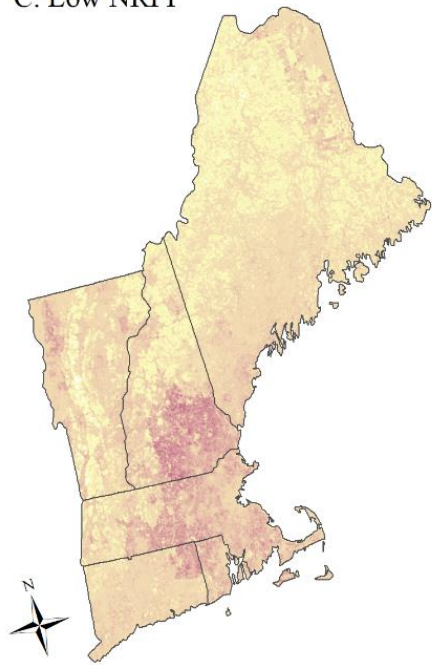
**A. High NRPI**



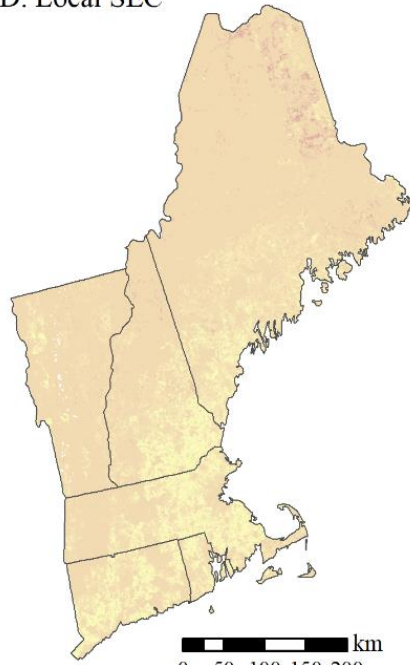
**B. Global SEC**



**C. Low NRPI**



**D. Local SEC**



0 50 100 150 200 km

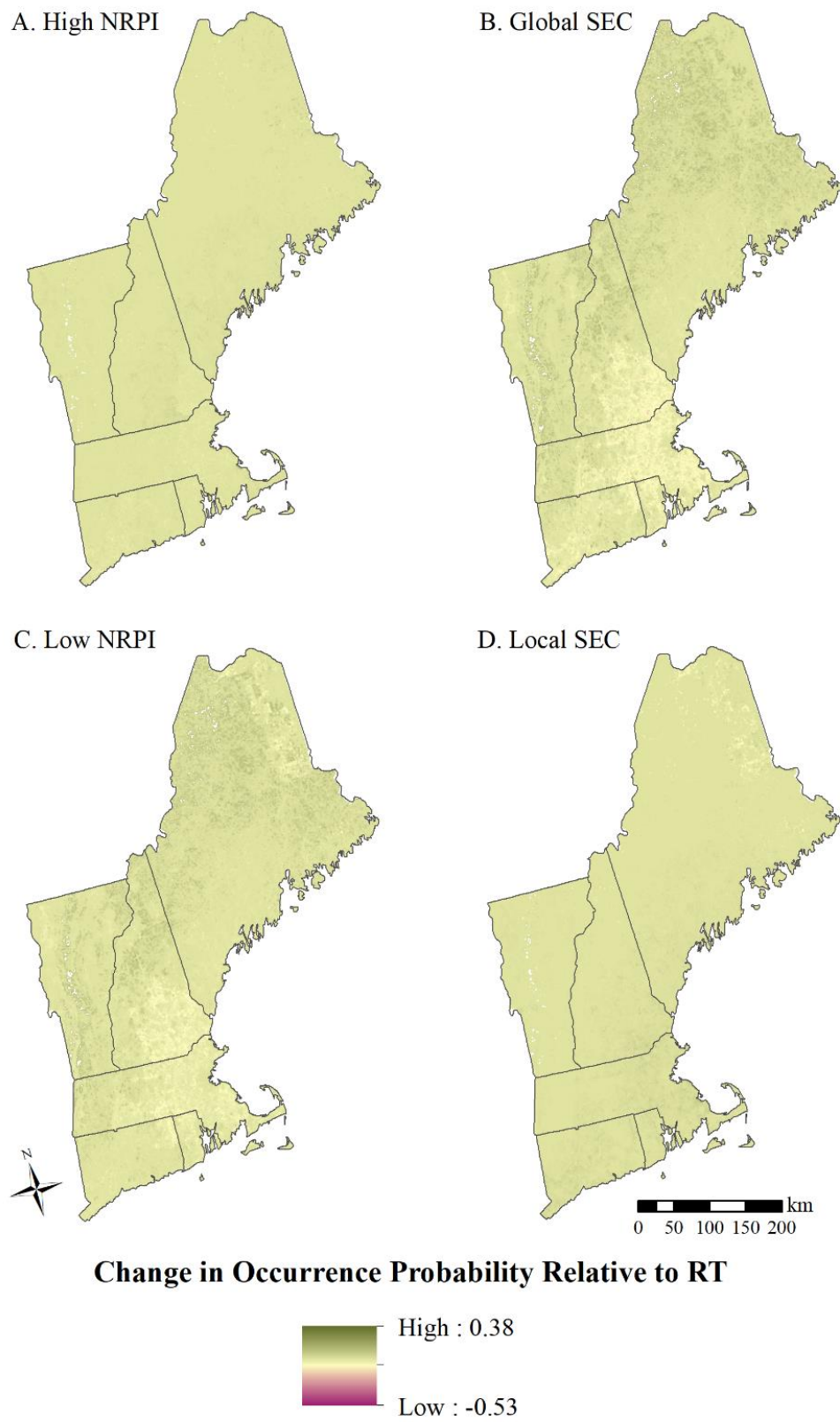
**Change in Occurrence Probability Relative to RT**



High : 0.59

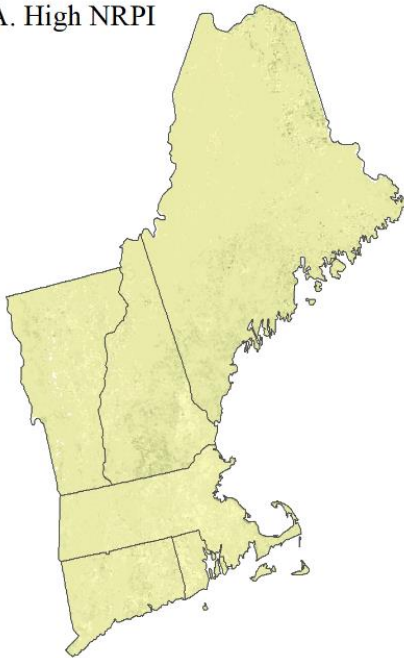
Low : -0.44

**Figure S2. Coyote**

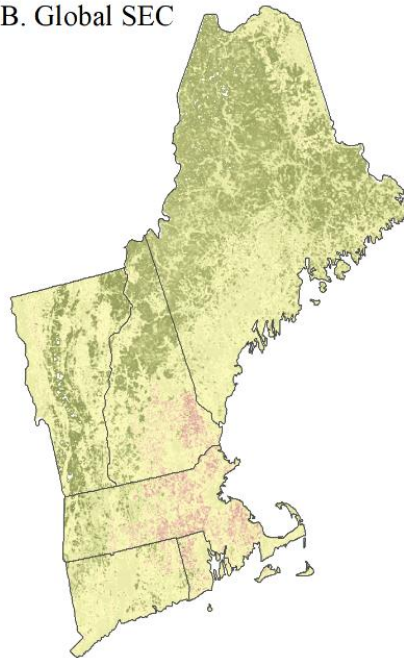


**Figure S2. Gray fox**

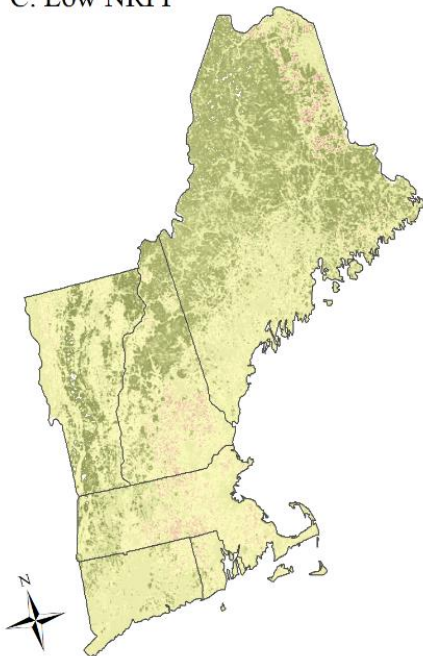
A. High NRPI



B. Global SEC



C. Low NRPI

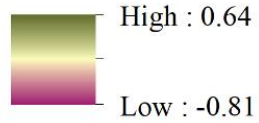


D. Local SEC

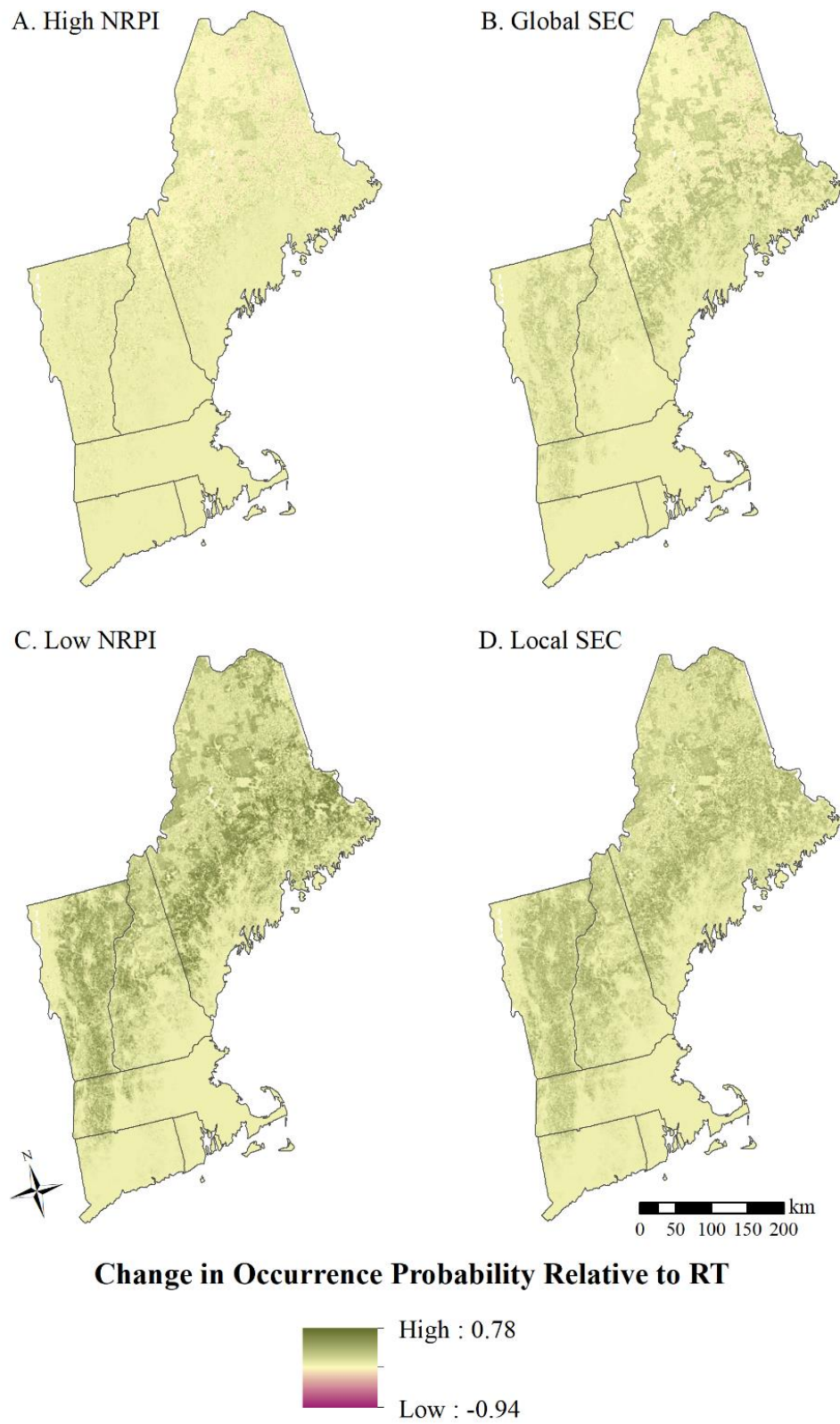


0 50 100 150 200 km

**Change in Occurrence Probability Relative to RT**



**Figure S2. Moose**

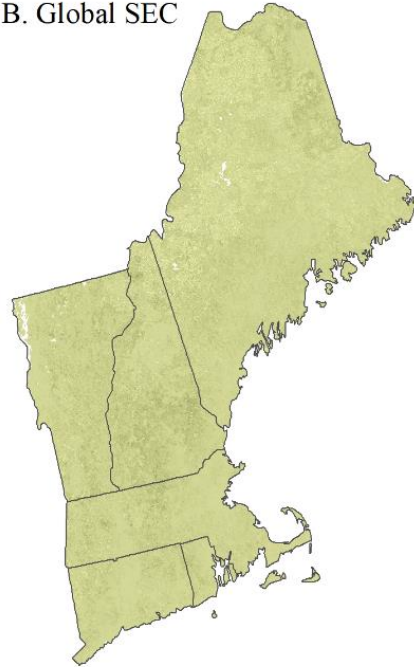


**Figure S2. Raccoon**

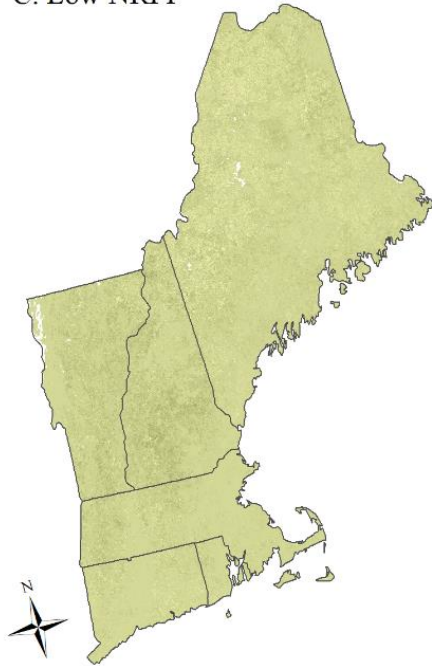
A. High NRPI



B. Global SEC



C. Low NRPI



D. Local SEC



0 50 100 150 200 km

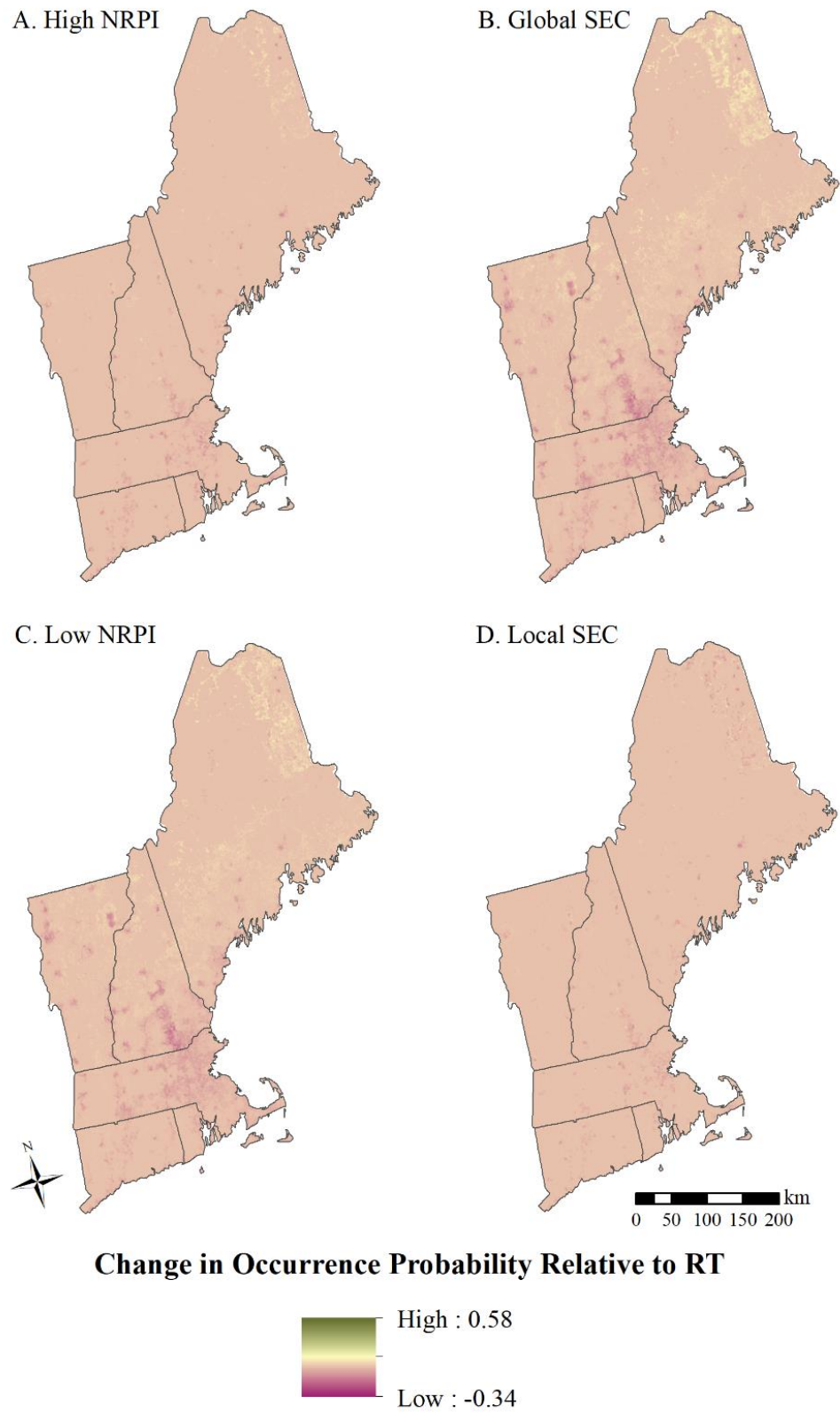
**Change in Occurrence Probability Relative to RT**



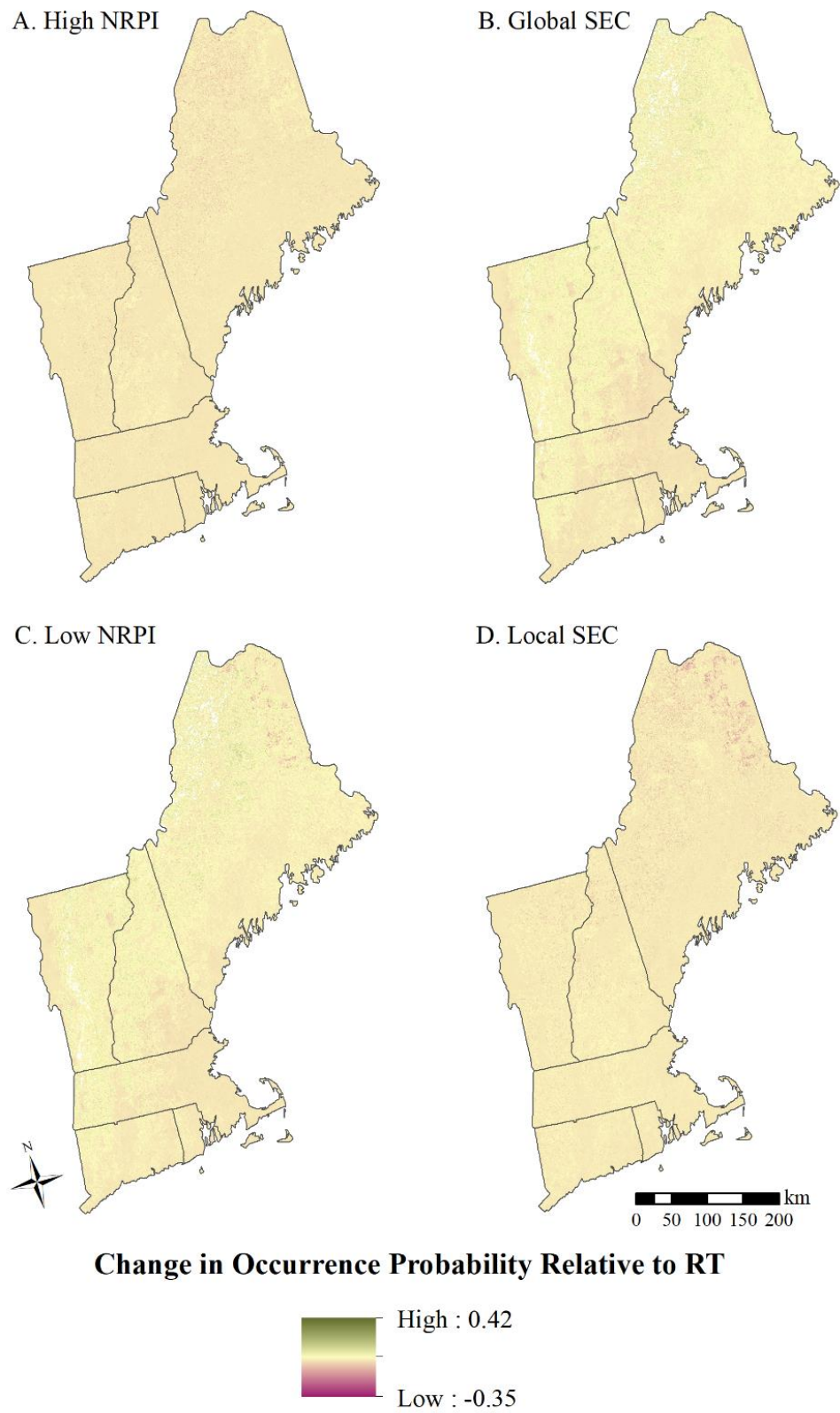
High : 0.29

Low : -0.47

**Figure S2. Red fox**

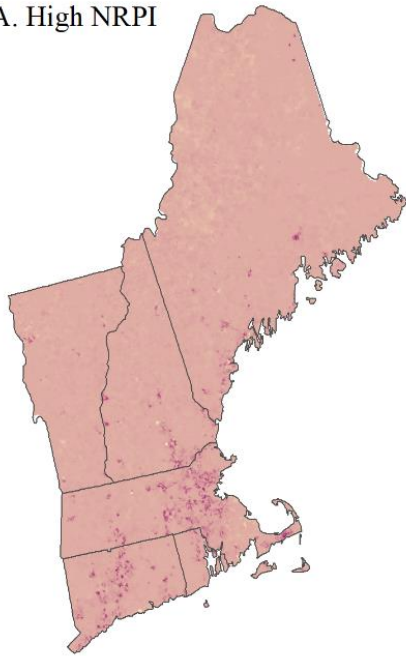


**Figure S2. Striped skunk**

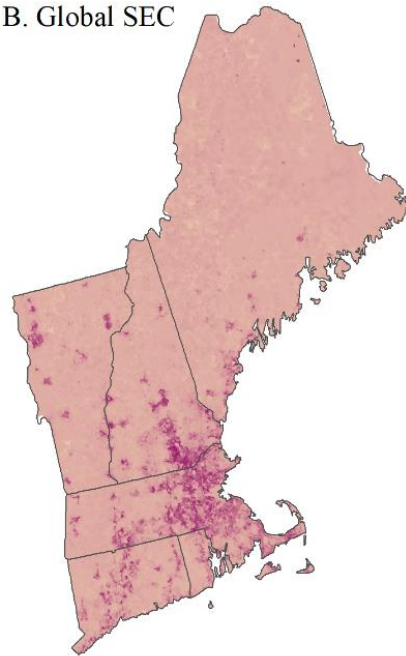


**Figure S2. White-tailed deer**

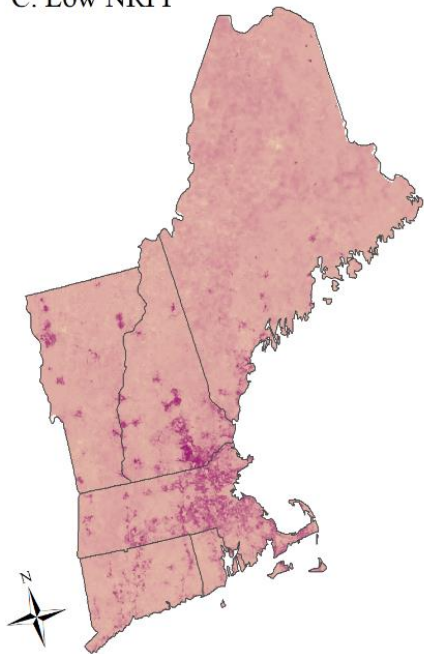
**A. High NRPI**



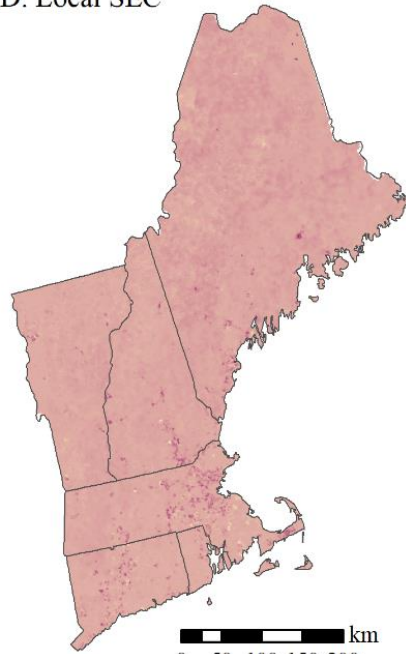
**B. Global SEC**



**C. Low NRPI**



**D. Local SEC**



0 50 100 150 200 km

**Change in Occurrence Probability Relative to RT**

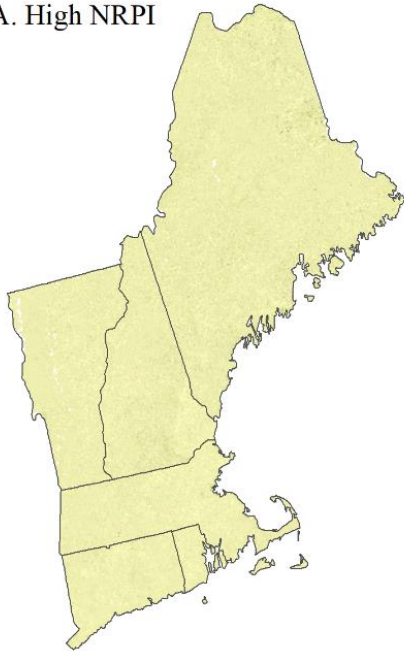


High : 0.85

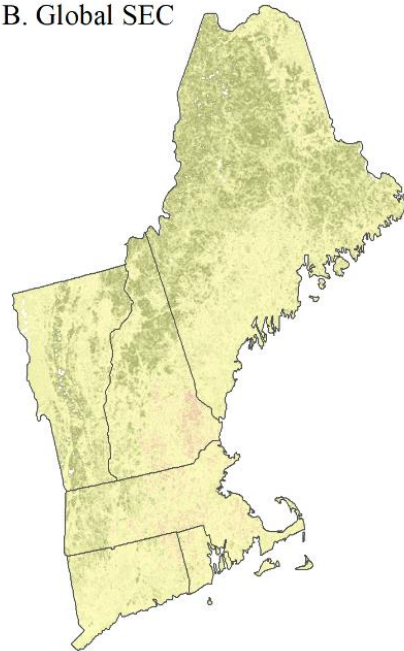
Low : -0.42

**Figure S2. Wild turkey**

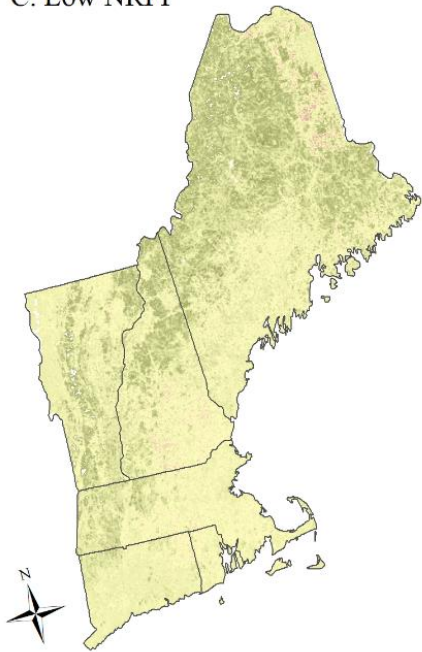
**A. High NRPI**



**B. Global SEC**



**C. Low NRPI**



**D. Local SEC**



0 50 100 150 200 km

**Change in Occurrence Probability Relative to RT**



High : 0.51

Low : -0.61