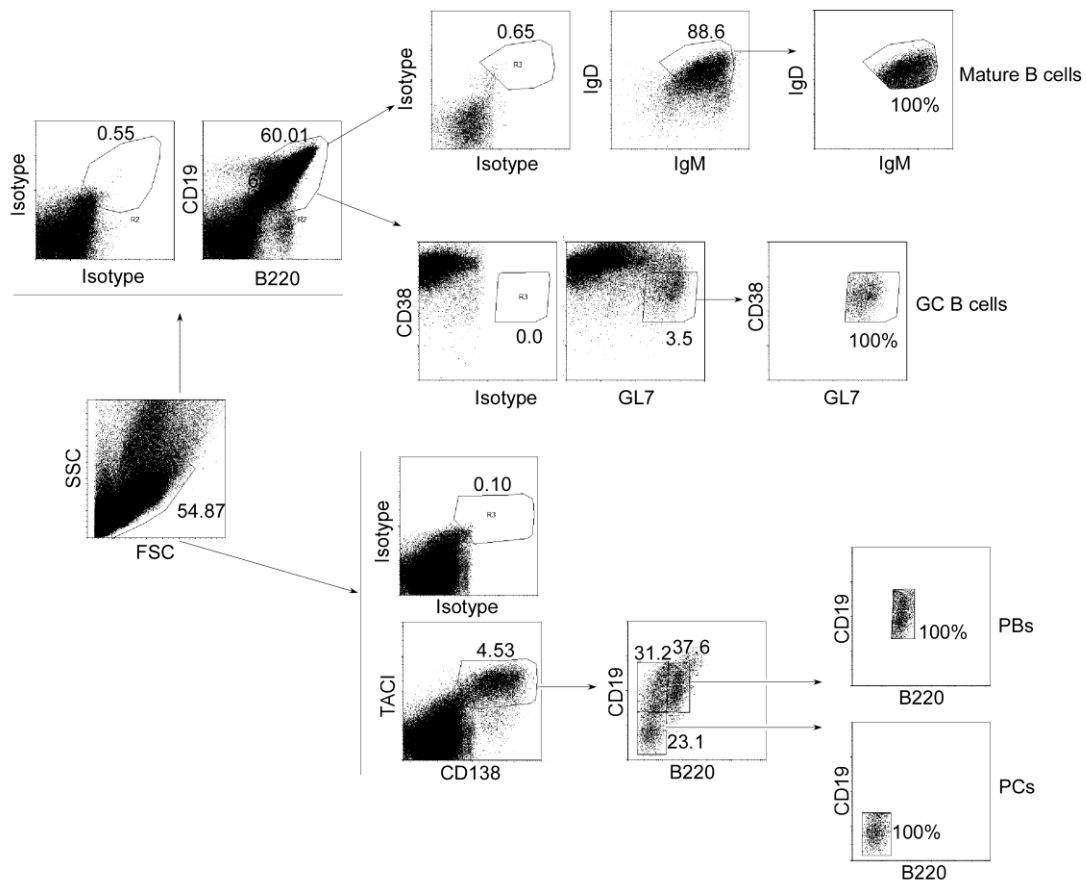


Supplementary Figure 1



Supplementary Figure 1. The gating strategy for analysis and sorting of splenic naïve B cells, germinal center (GC) B cells, plasmablasts (PBs), and plasma cells (PCs) from sheep red cell (SRC)-immunized C57BL/6 mice described in Table III and Figure 1D, E. Naïve B cells:  $CD19^+B220^+IgM^+IgD^+$ , GC B cells:  $CD19^+B220^+GL7^+CD38^{low}$ , PBs:  $TACI^+CD138^+B220^{int}CD19^{int}$ , PCs:  $TACI^+CD138^+B220^-CD19^-$ .