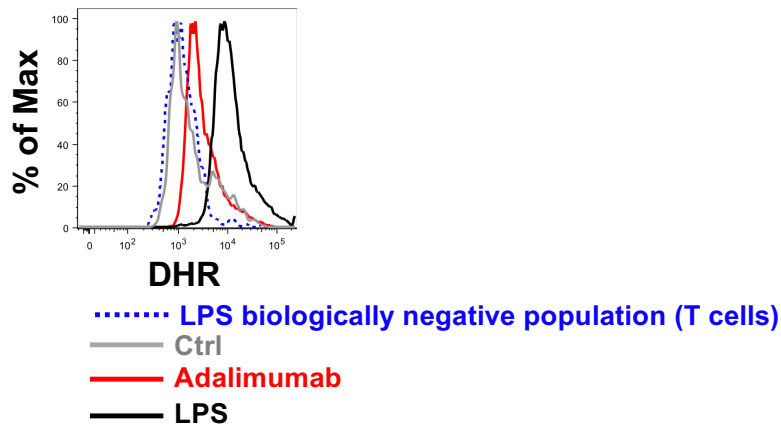


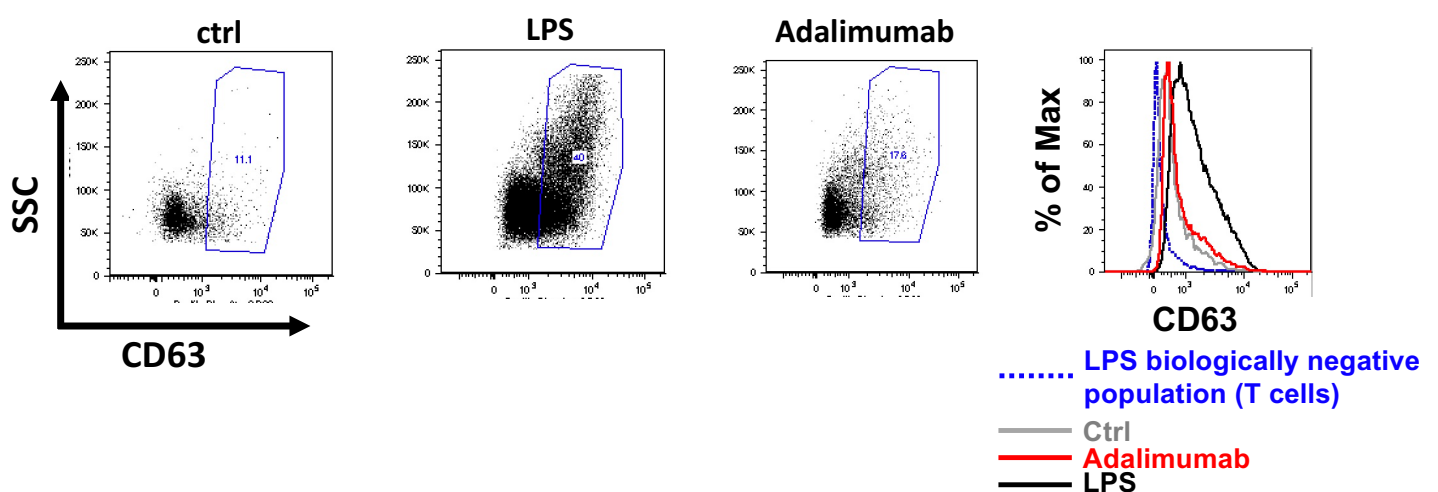
Supplementary Figure 10.

A. Gate in neutrophils



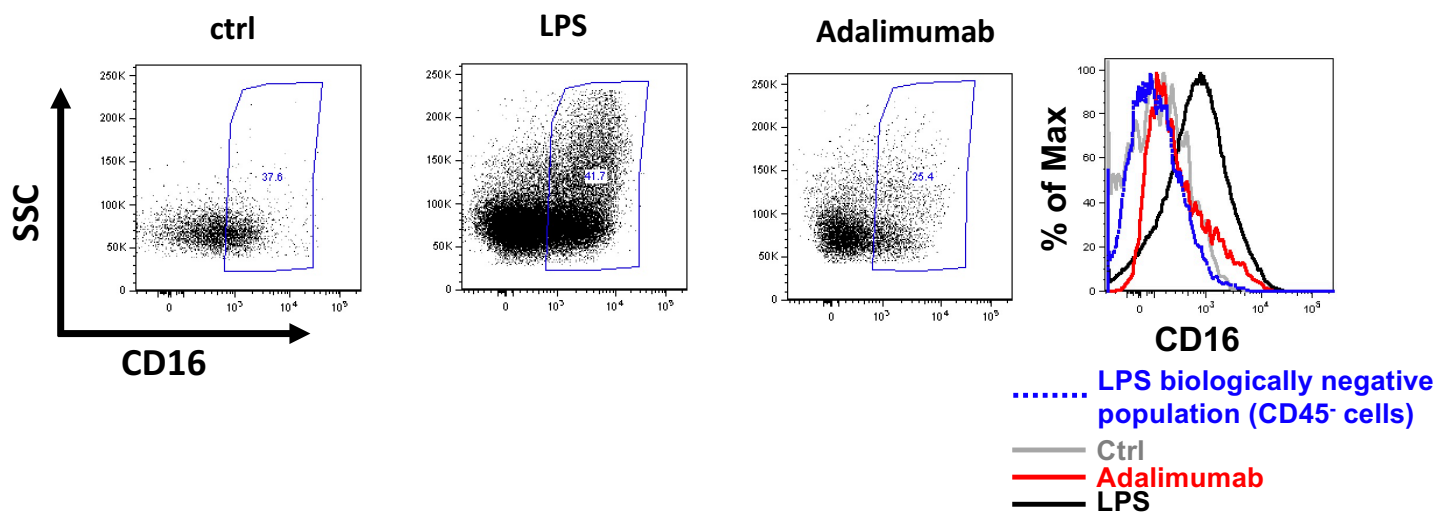
B.

Gate in neutrophils



C.

Gate in neutrophils



Supplementary Figure 10. Representative dot plots (n=5) showing activation of chorio-decidua Neutrophils. Chorio-decidua cell suspension were analyzed by flow cytometry. Representative mean fluorescence intensity (MFI) of **(A)** Dihydrorhodamine 123 (DHR) - an uncharged and nonfluorescent reactive oxygen species indicator – and frequency and MFI of **(B)** CD63⁺, and **(C)** CD16⁺ neutrophils decreased upon Adalimumab treatment.