

SUPPLEMENTARY DATA

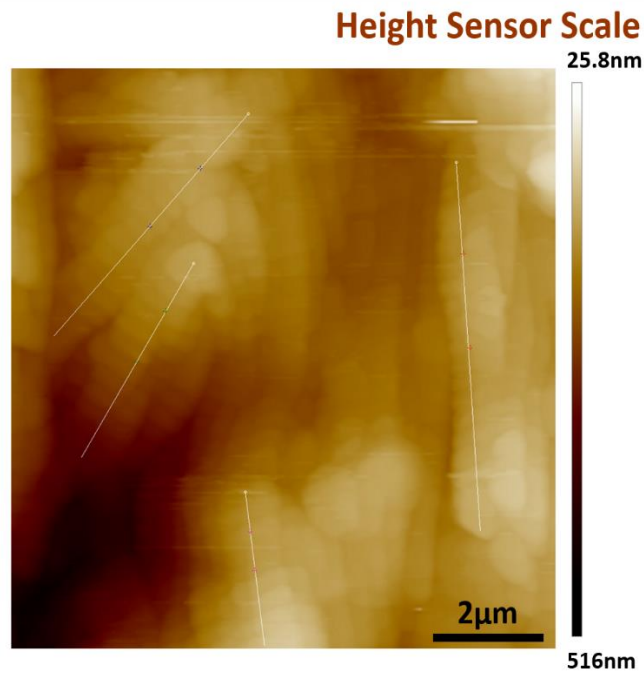


Figure S1: Atomic force Microscopy of human vaginal tissue showing height sensor scale corresponding to Fig 1E.

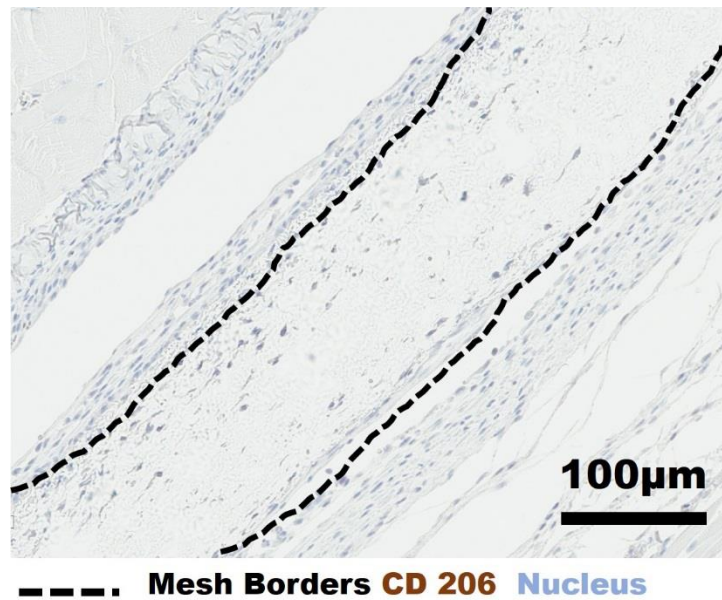


Figure S2: Negative control for immunohistochemical staining of CD206 of mice tissue with nanomesh implant

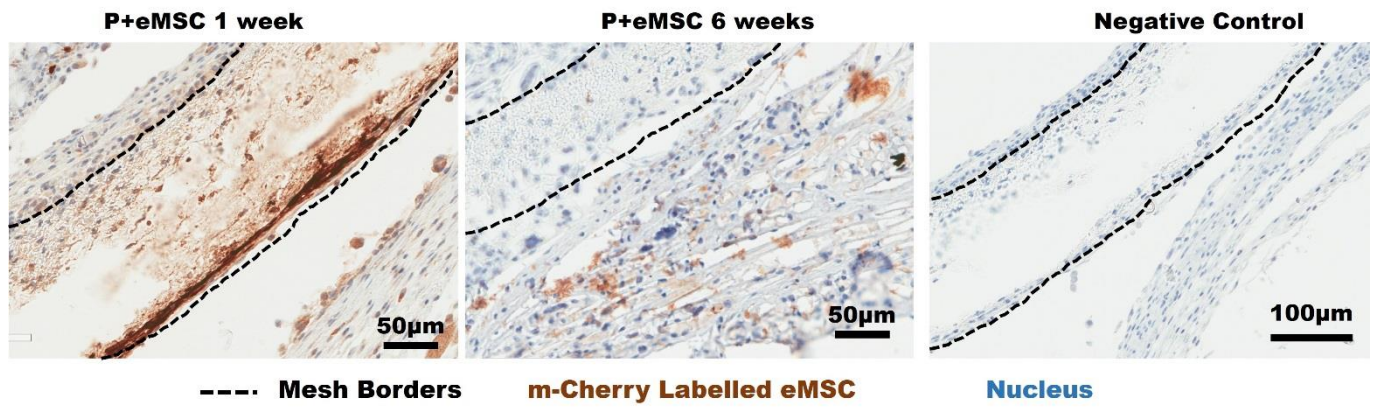


Figure S3: Immunohistochemically stained m-Cherry lentivirus labelled eMSCs in mice tissue with P nanomesh implant using anti m-Cherry antibody after 1 week and 6 weeks compared to negative control.

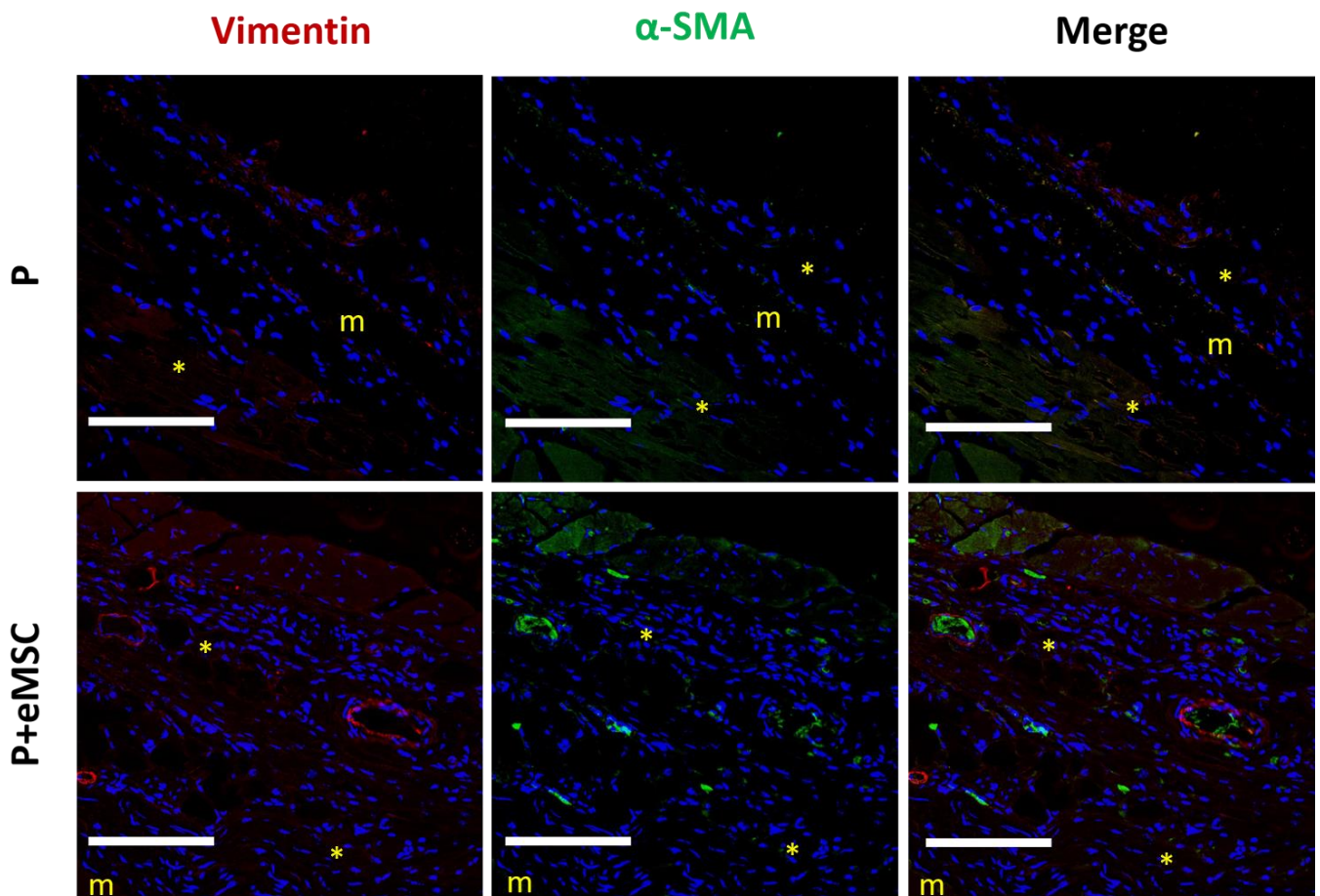


Figure S4: Immunofluorescence to characterize cells in mice tissues (*) around nanomesh implants (m) after 6 weeks using vimentin and alpha smooth muscle actin (scale bar= 100µm).