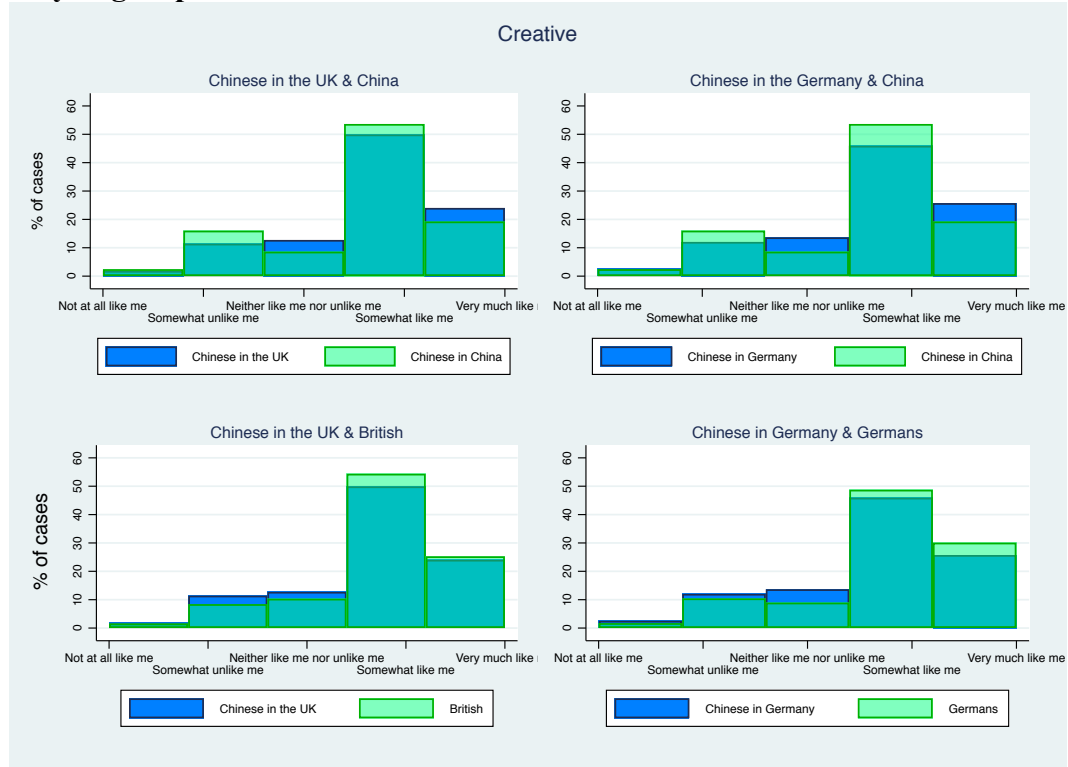


## APPENDIX

**Figure A.1. Distribution of components of the agentic individuality factor by analytic groups: creative.**



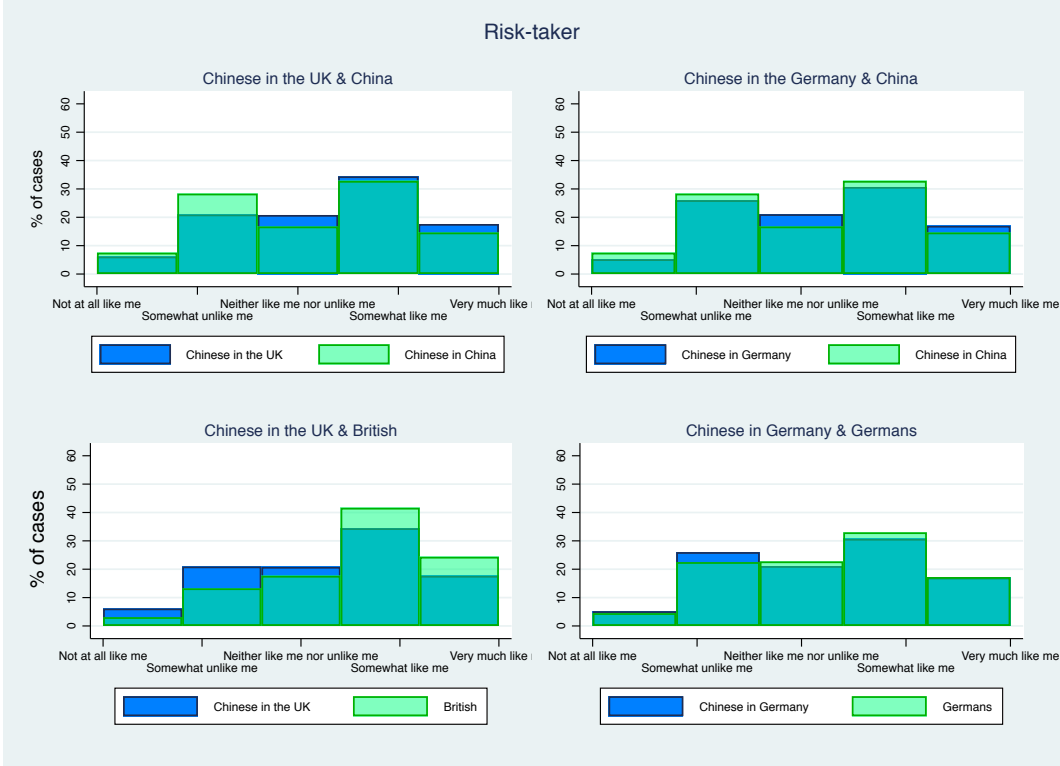
Source: *Bright Futures Survey*.

**Figure A.2. Distribution of components of the agentic individuality factor by analytic groups: independent minded.**



Source: *Bright Futures Survey*.

**Figure A.3. Distribution of components of the agentic individuality factor by analytic groups: risk-taker.**



Source: *Bright Futures Survey*.

**Figure A.4. Distribution of components of the agentic individuality factor by analytic groups: achievement oriented.**



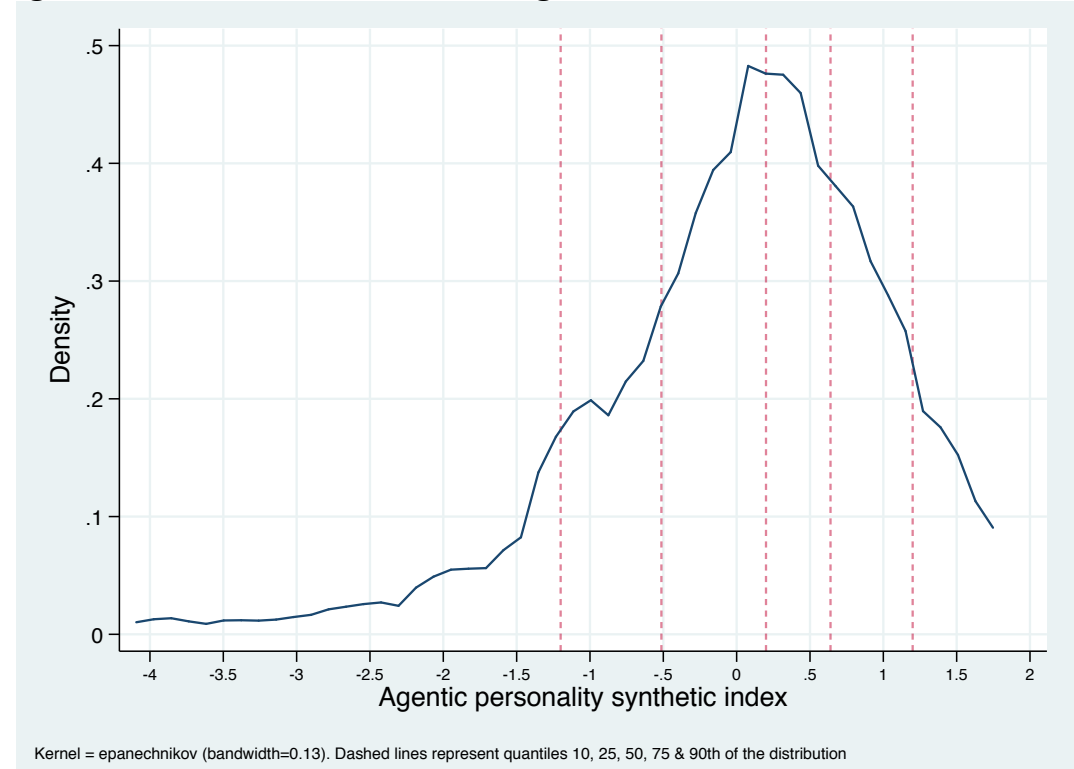
Source: *Bright Futures Survey*.

**Table A.1. Principal component analysis**

<b>Selected component</b>	<b>Eigenvalue</b>	<b>Proportion</b>
Agentic individual	1.90	0.47

<b>Eigenvectors</b>	<b>Agentic individuality index</b>
Creative	0.5528
Independent-minded	0.5513
Risk-taking	0.4884
Achievement oriented	0.3898

**Figure A.5. Kernel distribution of the agentic individual index.**



Source: Our elaboration from *Bright Futures Survey*.

**Table A.2. Description of variables used in the empirical analyses**

	<b>Variable</b>	<b>Mean</b>	<b>Std. Dev.</b>	<b>Min</b>	<b>Max</b>
Agentic individual characteristics		-0.13	1.4	-5.5	2.2
Father's occupation	Professional and technical or high-level administration	0.46	0.50	0	1
Father's education	University	0.30	0.50	0	1
Student female		0.59	0.49	0	1
Student 5th percentile of class in high school		0.62	0.48	0	1
Student rural setting in China					

Source: Our elaboration from *Bright Futures Survey*.

**Table A.3. Linear Probability Models on individual characteristics by sample**

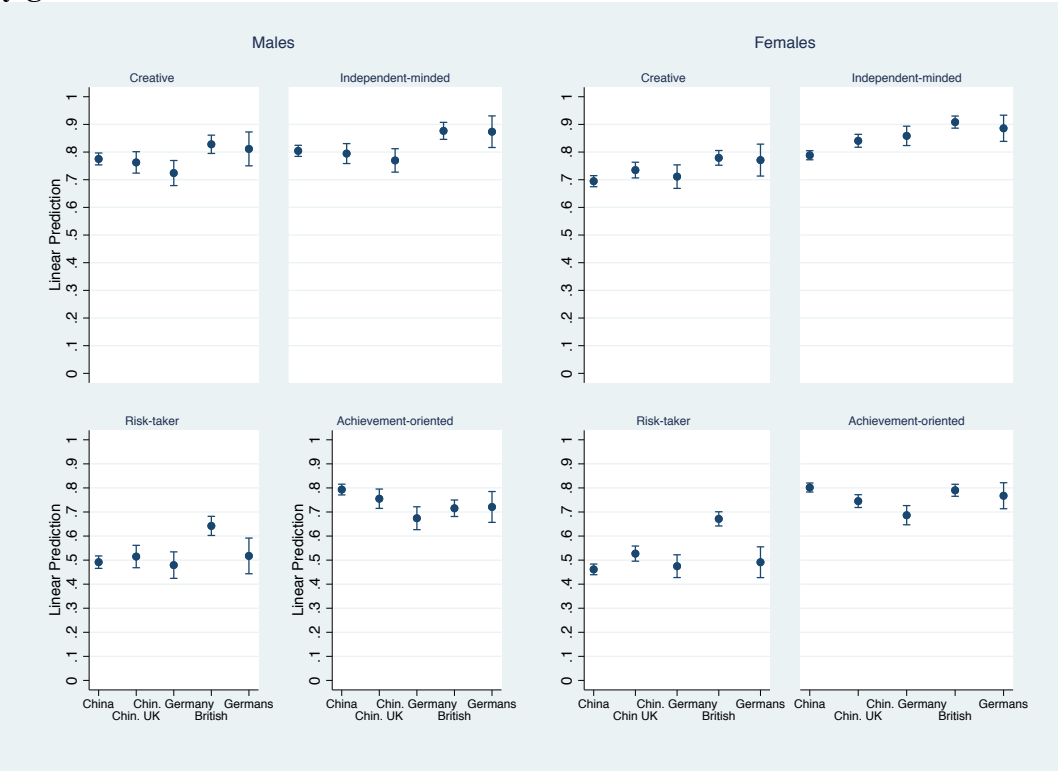
	(1) Creative	(2) Independent- minded	(3) Risk-taker	(4) Achievement oriented
Chinese in UK (ref. Chinese in China)	0.011 (0.014)	0.030* (0.012)	0.047* (0.016)	-0.052* (0.013)
Chinese in Germany	-0.012 (0.018)	0.025 (0.015)	0.0024 (0.020)	-0.12* (0.017)
British	0.068* (0.013)	0.10* (0.011)	0.19* (0.015)	-0.036* (0.013)
Germans	0.059* (0.023)	0.085* (0.020)	0.028 (0.026)	-0.051* (0.022)
Constant	0.73* (0.008)	0.80* (0.007)	0.47* (0.009)	0.80* (0.007)
F	8.91	22.4	42.2	13.1
N	7534	7534	7534	7534
R <sup>2</sup>	0.0047	0.012	0.022	0.0069

Source: Our elaboration from *Bright Futures Survey*.

Standard errors in parentheses; \* $p < 0.05$ .



**Figure A.6. Differences in selected individual characteristics across student groups by gender.**



Source: Our elaboration from *Bright Futures Survey*. Estimated from models not shown in the paper but available upon request. Estimates and 95% confidence intervals.