

Supplementary Figure 5

Prominence of IL6, IGF, TLR and bioenergetics pathway perturbation in lung tissues of scleroderma patients with pulmonary fibrosis

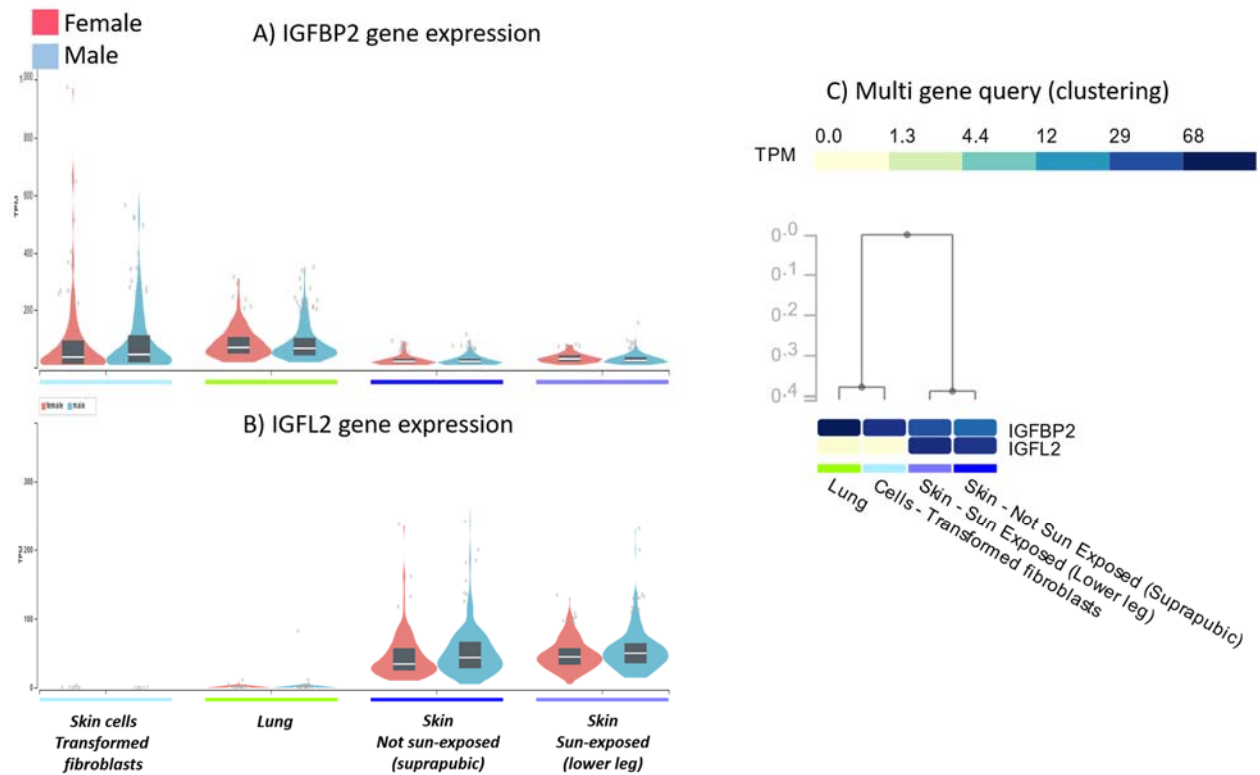
Ludivine Renaud¹, Willian A. da Silveira², Naoko Takamura¹, Gary Hardiman², Carol Feghali-Bostwick^{1*}

¹ Department of Medicine, Medical University of South Carolina, Charleston, SC, USA.

² School of Biological Sciences and Institute for Global Food Security, Queens University Belfast, Belfast BT9 5AG, UK.

*** Correspondence:**

Dr. Carol Feghali-Bostwick
feghalib@musc.edu



Supplementary Figure 5: IGFBP2 and IGFL2 gene expression in skin fibroblasts, lung and skin. (A) by gender, (B) multi gene query that shows clustering. Figures generated by GTEx portal. TPM (Transcripts Per Kilobase Million).