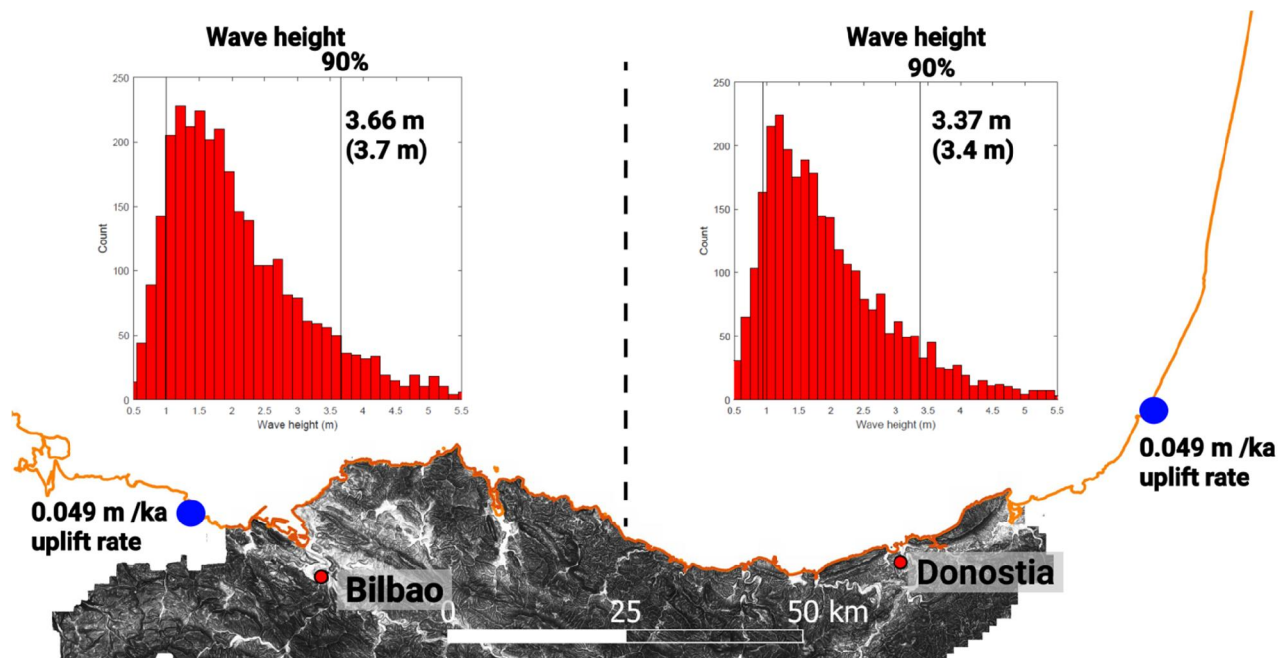


Supplementary Material

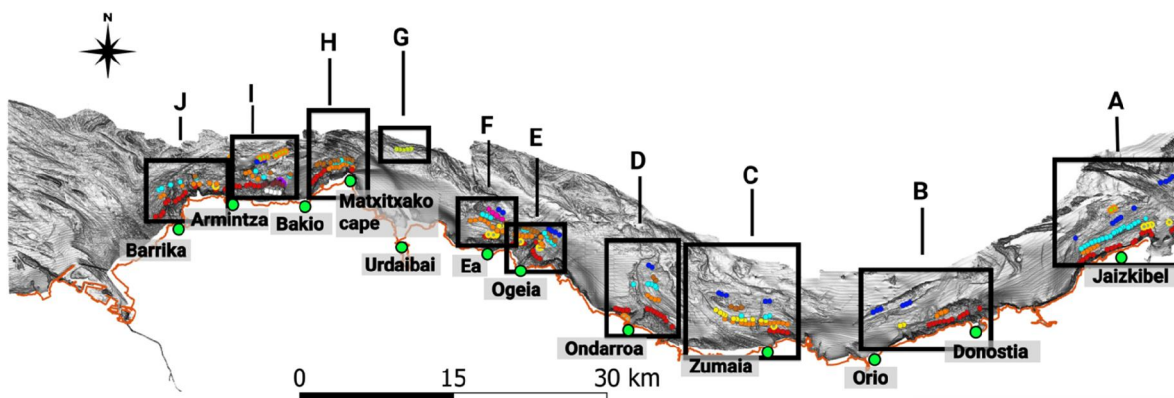
1 Supplementary Figures

1.1 Wave height data and uplift rate in the proximity of the study area

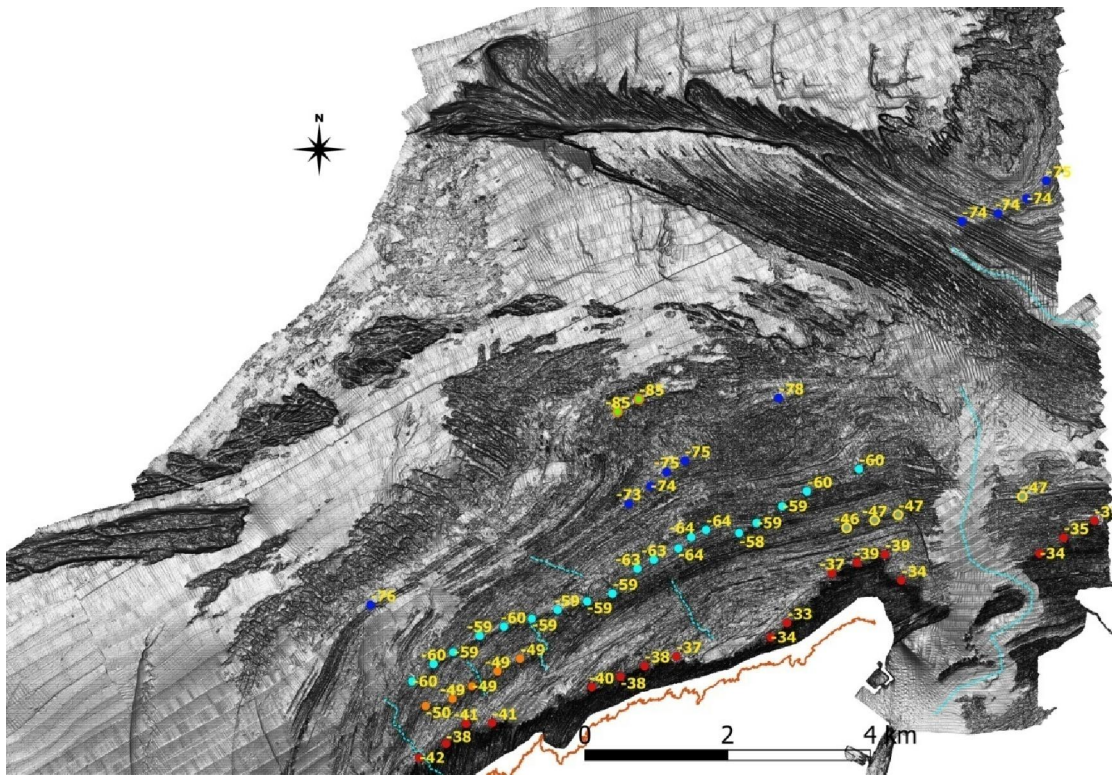


Supplementary Figure 1. Wave height data in the study area from the AVISO website of the French Spatial Agency (CNES) at www.aviso.com as part of the Ssalto/Duacs ground-processing segment). Reported uplift rates close to the study area from Pedoja et al. (2018) database.

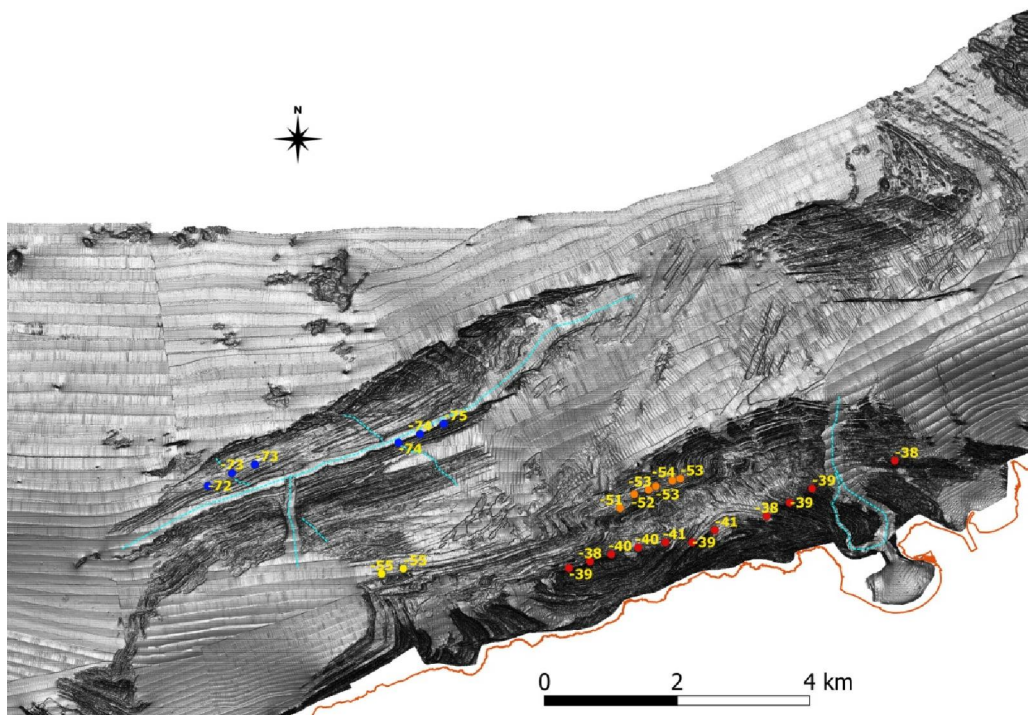
1.2 Shoreline angles distribution in the continental shelf



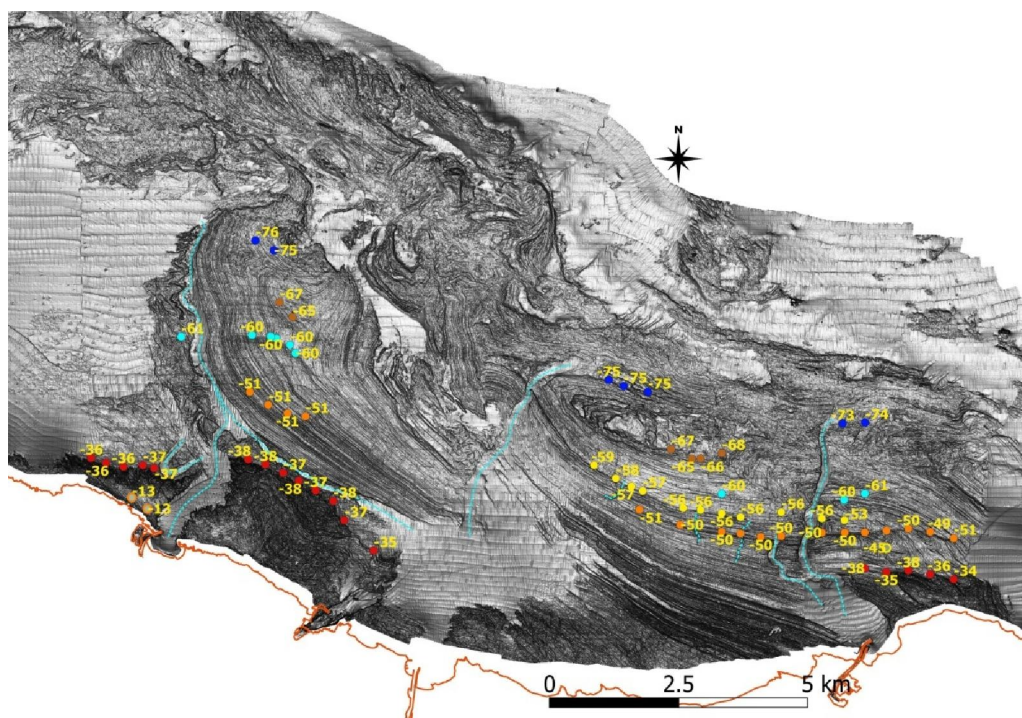
Supplementary Figure 2. General distribution of submerged shoreline angles in circles.



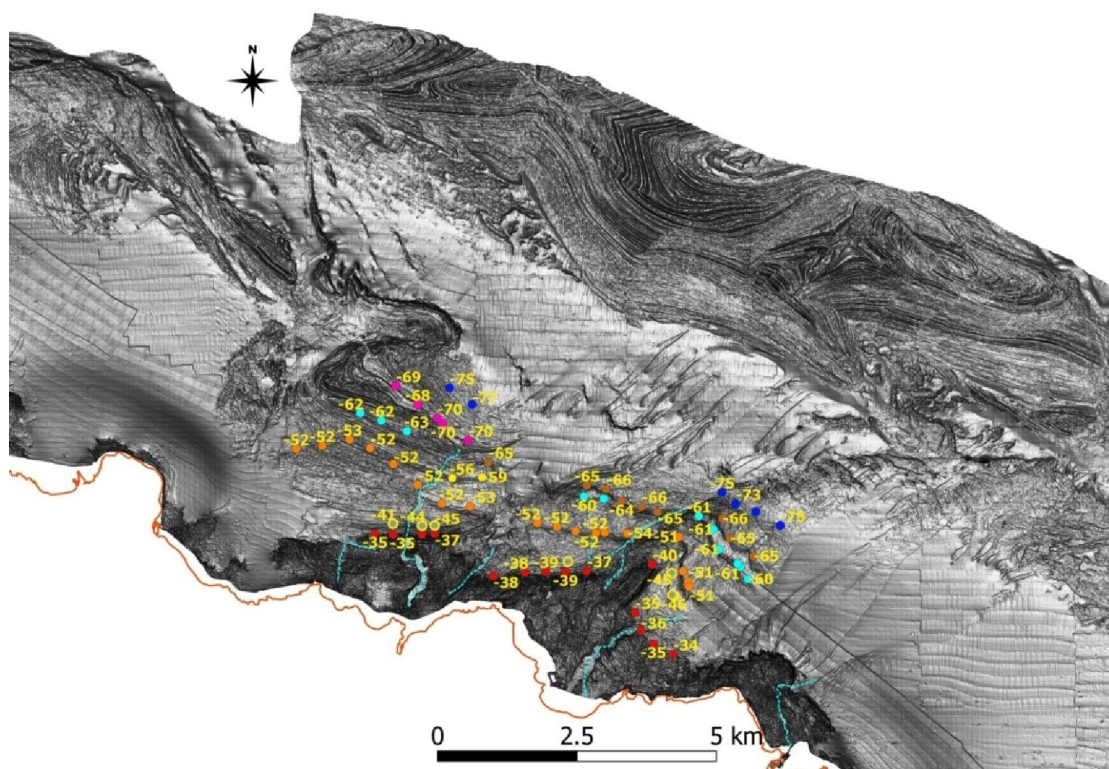
Supplementary Figure 3. Area in front of Jaizkibel. Circles indicate shoreline angles and the numbers their depth.



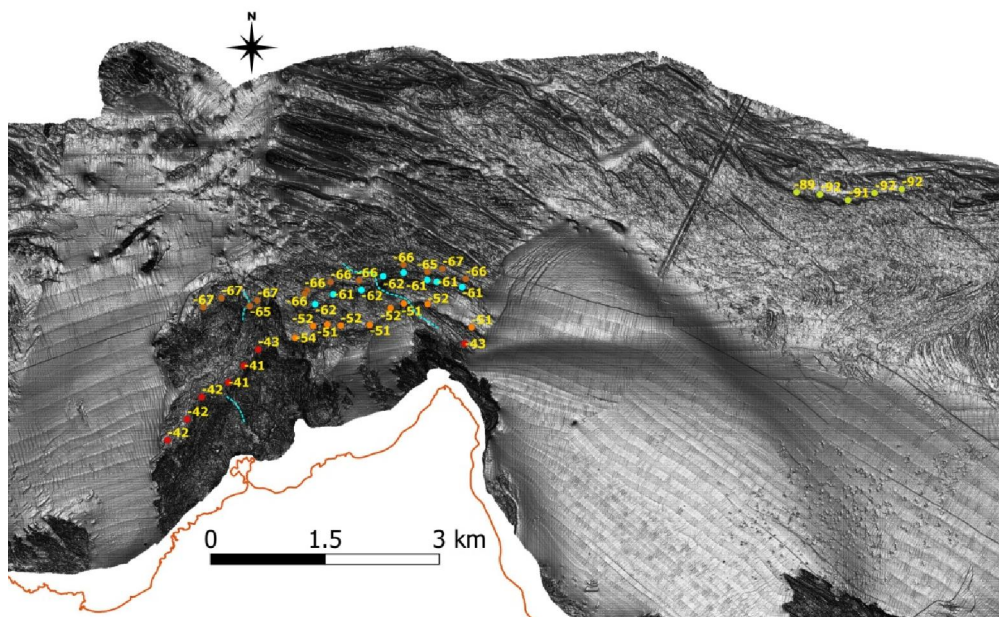
Supplementary Figure 4. Area between Donostia and Orrio. Circles indicate shoreline angles and the numbers their depth.



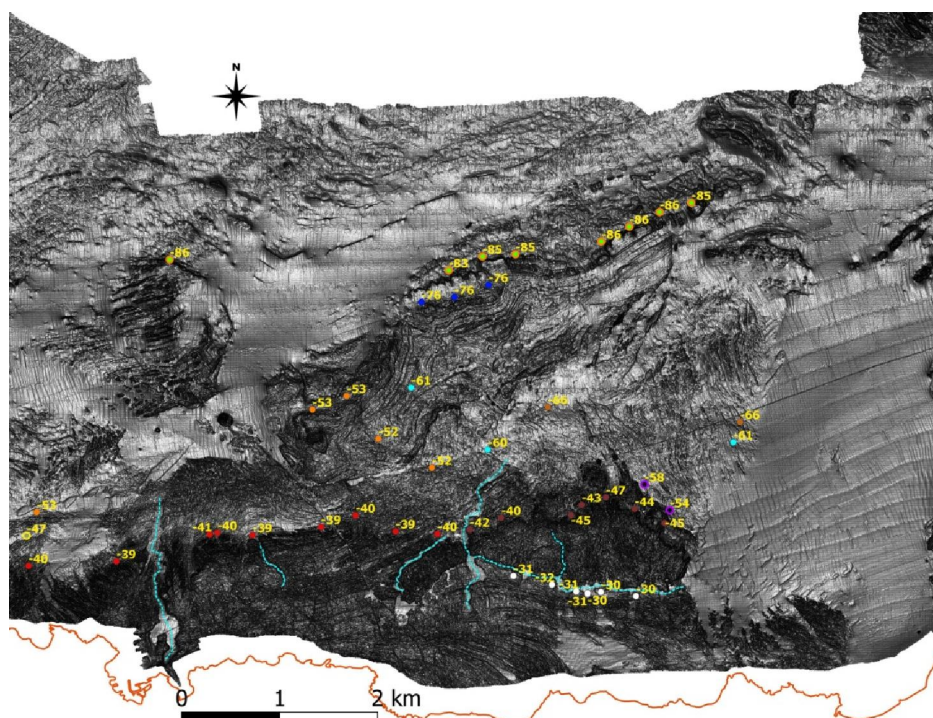
Supplementary Figure 5. Area between Zumaia and Ondarroa. Circles indicate shoreline angles and the numbers their depth.



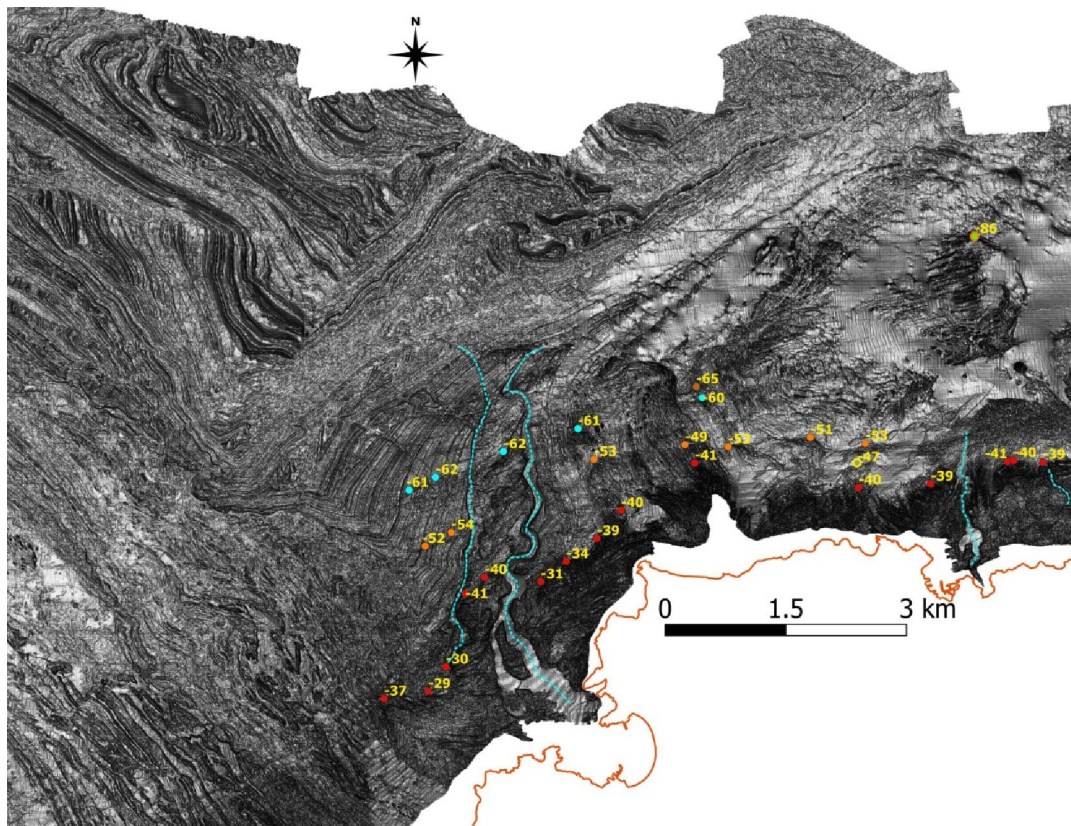
Supplementary Figure 6. Area between Ogeia and Ea. Circles indicate shoreline angles and the numbers their depth.



Supplementary Figure 7. Area in front of Matxitxako cape and Urdaibai. Circles indicate shoreline angles and the numbers their depth.

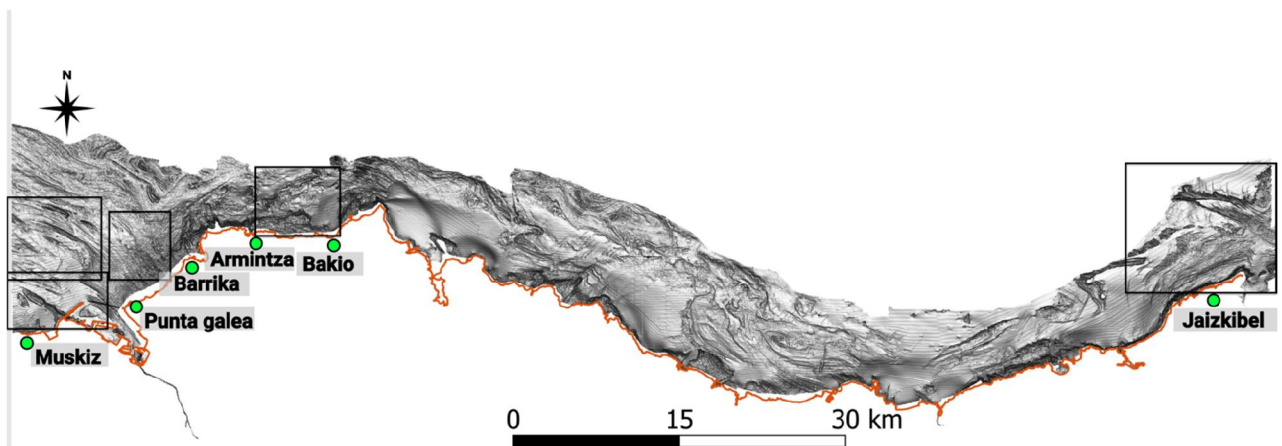


Supplementary Figure 8. Area between Bakio and Arminza. Circles indicate shoreline angles and the numbers their depth.

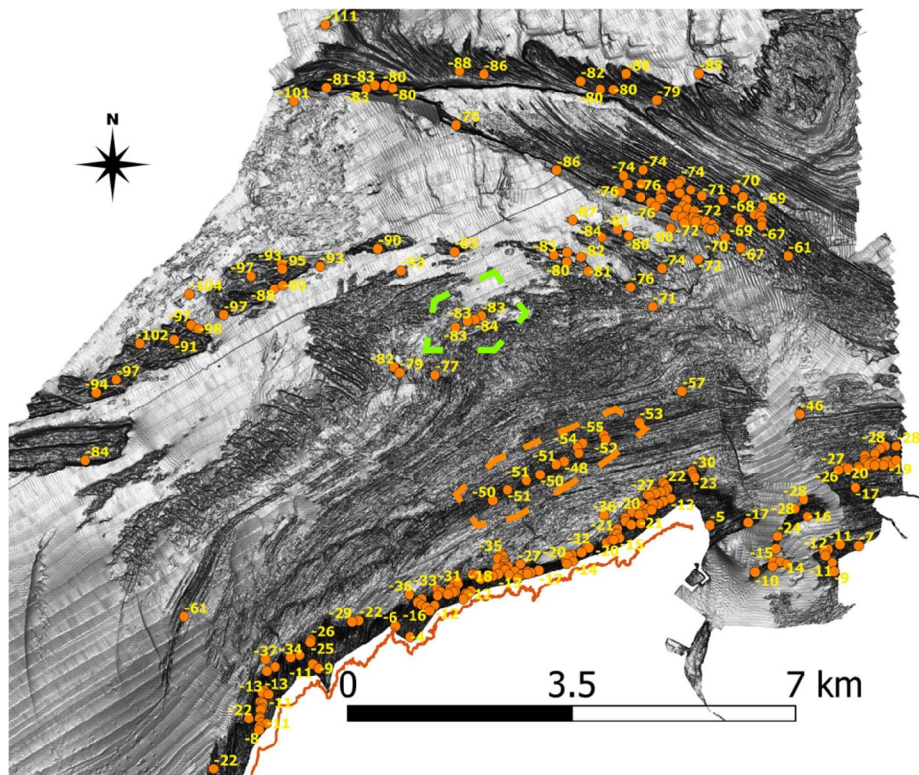


Supplementary Figure 9. Area between Armintza and Barrika. Circles indicate shoreline angles and the numbers their depth.

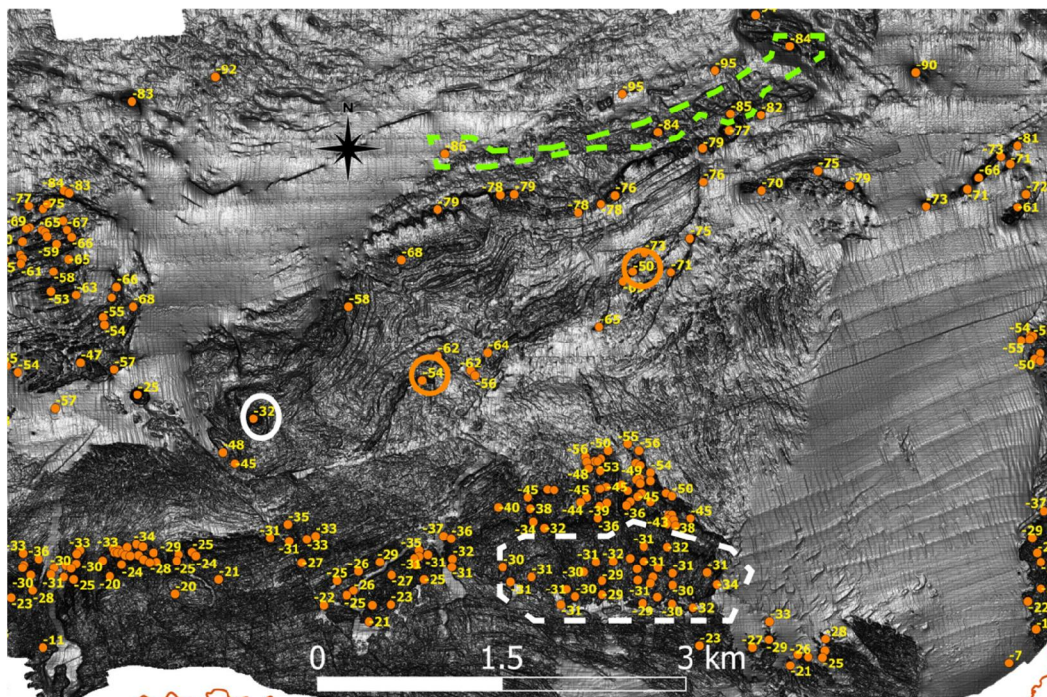
1.3 Sea stacks analysis



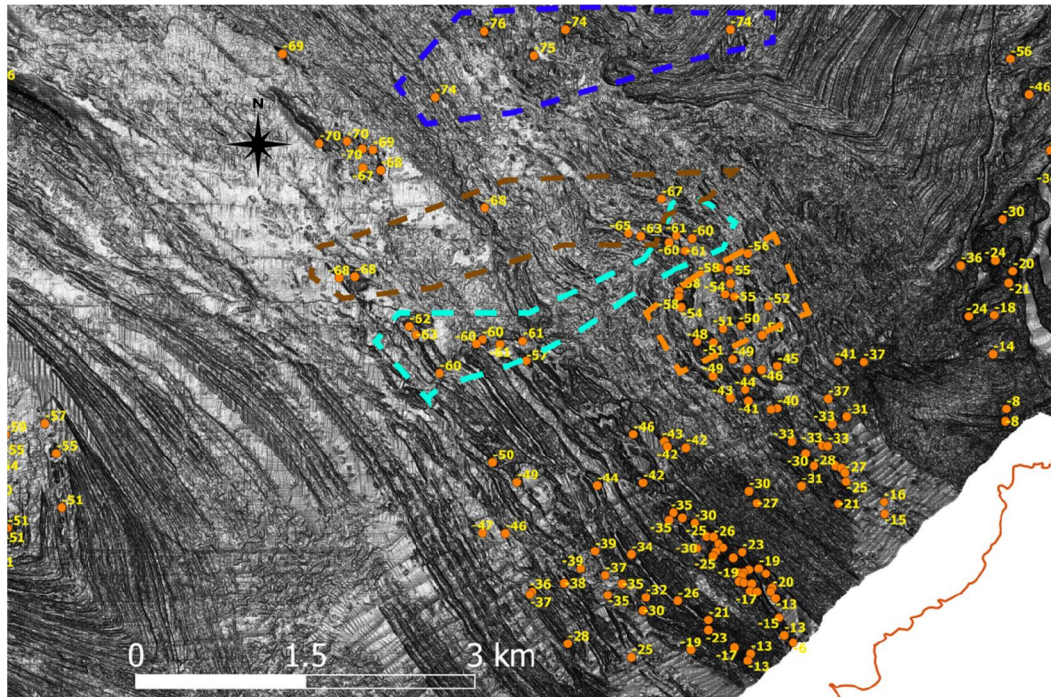
Supplementary Figure 10. The black boxes highlight the location of the following figures.



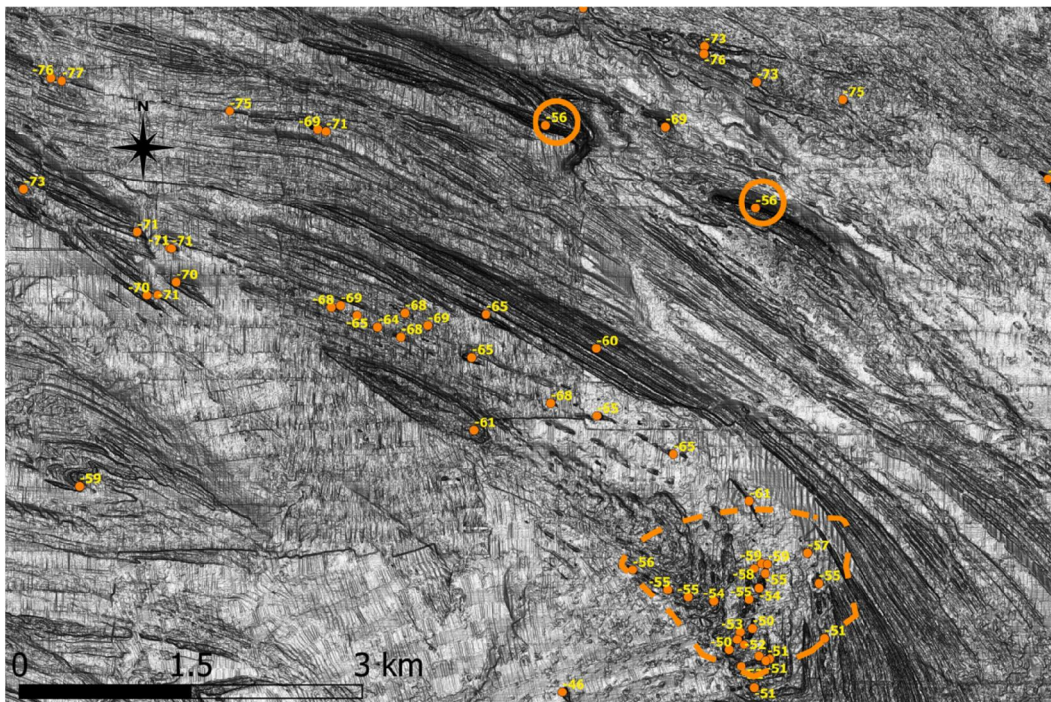
Supplementary Figure 11. Area in front of Jaizkibel. The numbers show the depth of the top of the stacks. Dotted lines highlight stacks that could be associated with previously detected submerged terraces. Orange: T5. Light green: T11.



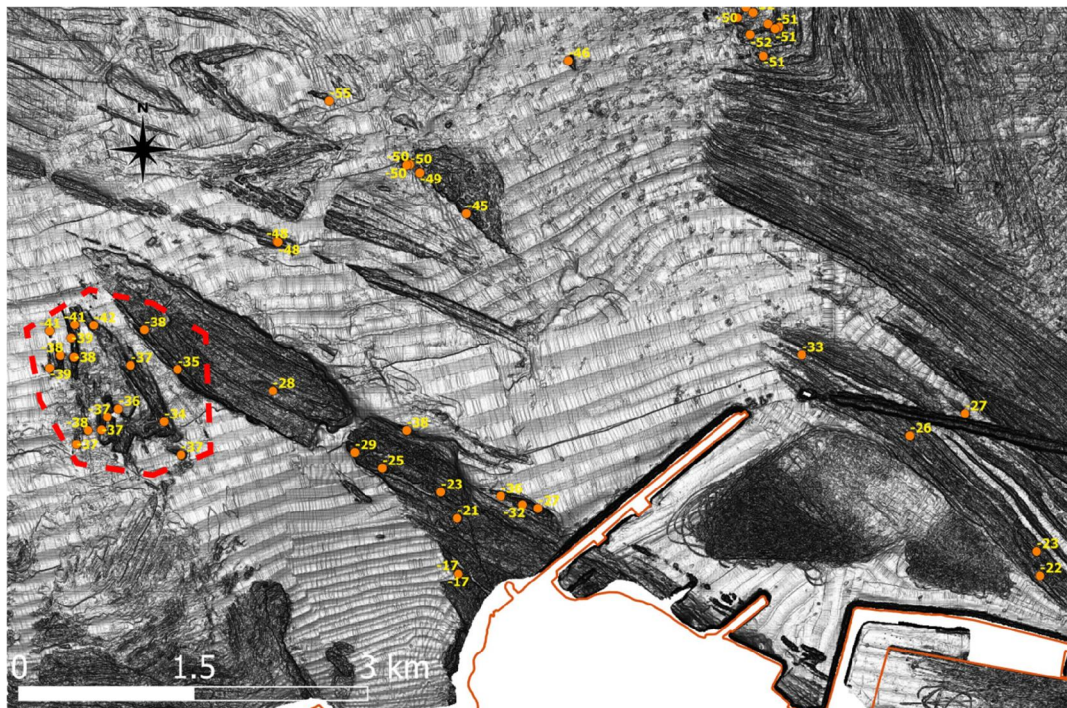
Supplementary Figure 12. Area between Bakio and Arminza. The numbers show the depth of the top of the stacks. Dotted lines highlight stacks that could be associated with previously detected submerged terraces. White: T2. Orange: T5. Light green: T11.



Supplementary Figure 13. Area between Barrika and Punta Galea. The numbers show the depth of the top of the stacks. Dotted lines highlight stacks that could be associated with previously detected submerged terraces. Orange: T5. Light blue: T7. Brown: T8. Dark blue: T10.

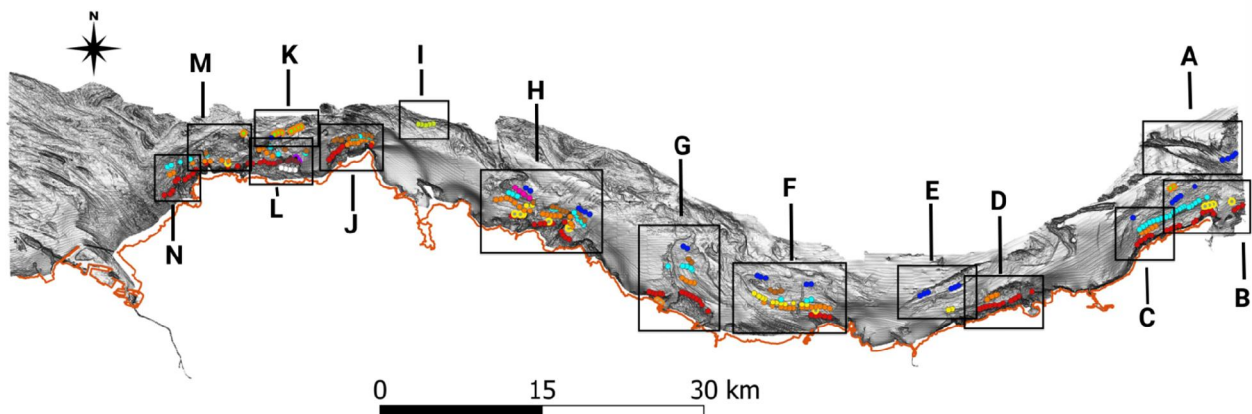


Supplementary Figure 14. Area offshore Muskiz. The numbers show the depth of the top of the stacks. Dotted lines highlight stacks that could be associated with previously detected submerged terraces. Orange: T5.



Supplementary Figure 15. Area in front of Muskiz. The numbers show the depth of the top of the stacks. Dotted lines highlight stacks that could be associated with previously detected submerged terraces. Red: T3.

1.4 Zones from the video



Supplementary Figure 16. The black boxes highlight the location of the zones described in the video.