

Supplementary Material

Differential Expression of HERV-W in Peripheral blood in Multiple Sclerosis and Healthy Patients in Two Different Ethnic Groups

Rachael Tarlinton^{1*}, Belinda Wang¹, Elena Morandi², Bruno Gran³, Timur Khaiboullin⁴, Ekatarina Martynova⁵, Albert Rizvanov⁵, Svetlana Khaiboullina^{5,6}

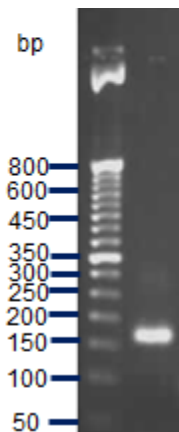
* **Correspondence:** Rachael.tarlinton@nottingham.ac.uk

1 Supplementary Data

2 Supplementary Figures and Tables

.

2.1 Supplementary Figures



Supplementary Figure 1. DNA gel electrophoresis for validation of gene amplification in RT-PCR. 1 patient sample run on a 2% agarose gel stained with Ethidium Bromide. The first line accommodates a 50 base pairs (bp) ladder. MSRV_{env} amplicon size=166bp.



Supplementary Figure 1. The figure legends are required to have the same font as the main text, 12 point normal Times New Roman, single spaced. Please use a single paragraph for each legend and prepare the figures keeping in mind the PDF layout.