

Supplementary Figures

Language processing as a precursor to language change: evidence
from Icelandic

January 2, 2020

Figure S1: Grand average ERPs for Active verbs. Shaded regions show 95% confidence intervals by participants

Grand average ERPs – ACT verbs

95% CIs by participant

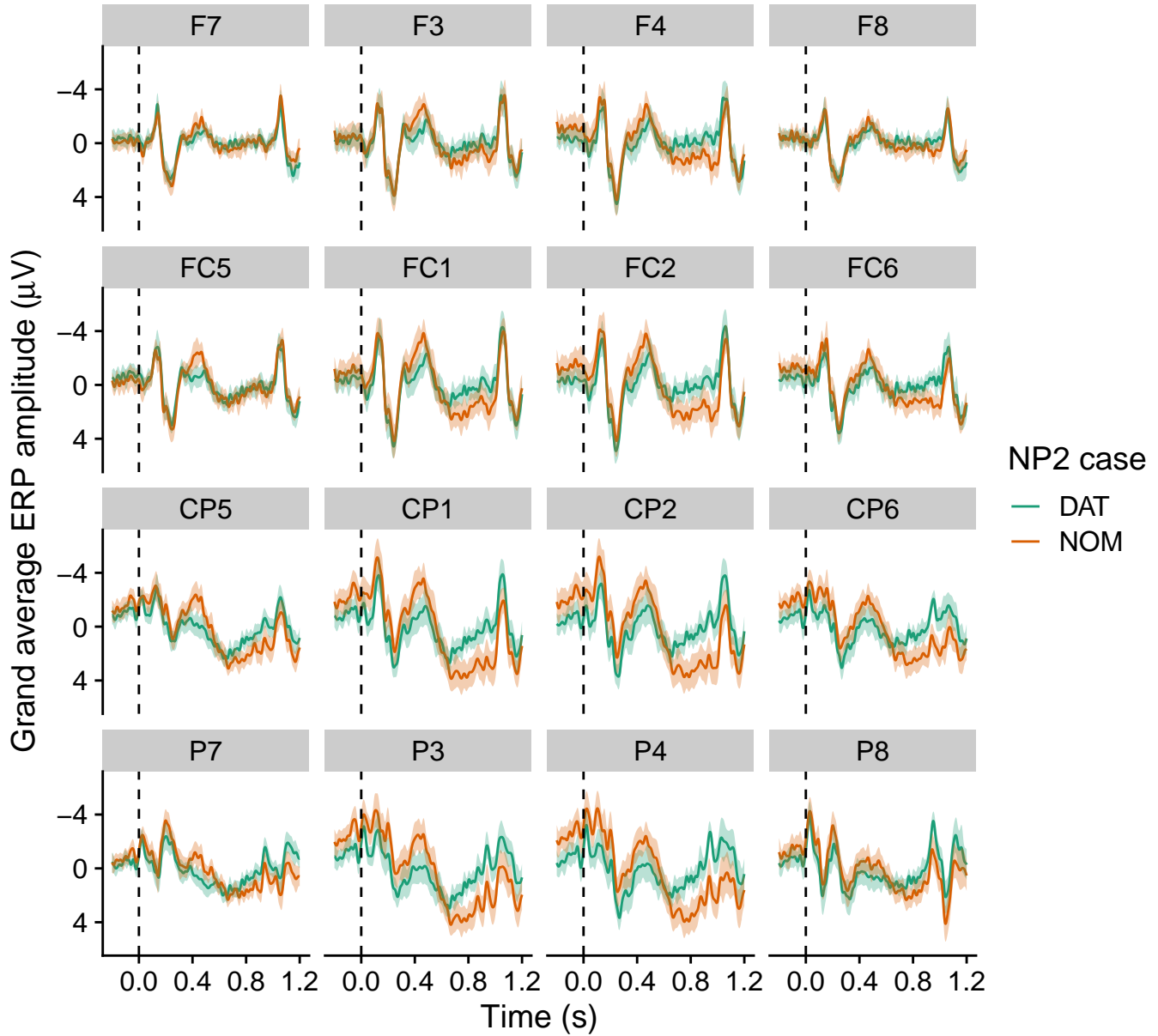


Figure S2: Grand average ERPs for Active verbs. Shaded regions show 95% confidence intervals by items

Grand average ERPs – ACT verbs

95% CIs by item

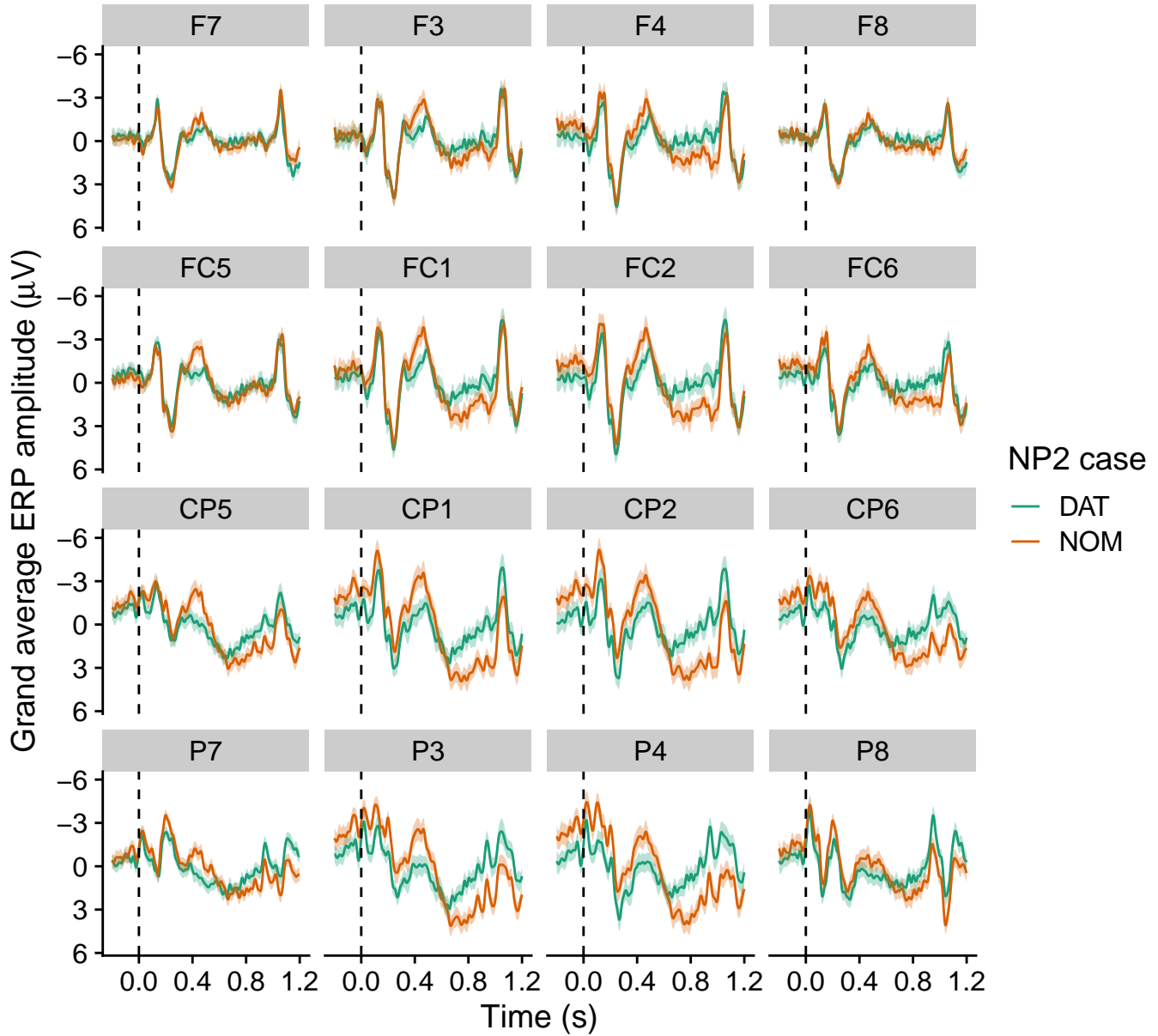


Figure S3: Grand average ERPs for Alternating verbs. Shaded regions show 95% confidence intervals by participants

Grand average ERPs – ALT verbs

95% CIs by participant

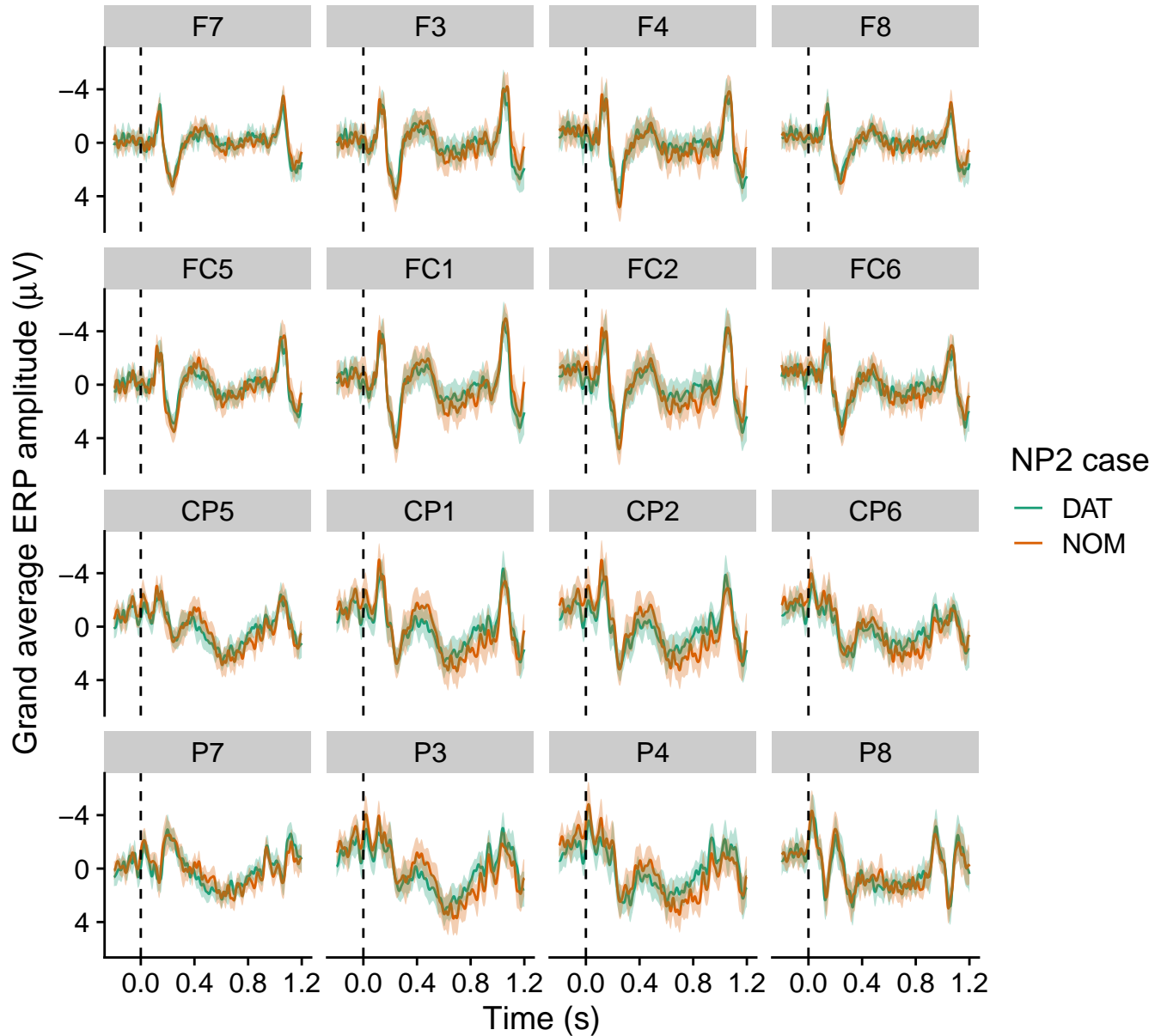


Figure S4: Grand average ERPs for Alternating verbs. Shaded regions show 95% confidence intervals by items

Grand average ERPs – ALT verbs

95% CIs by item

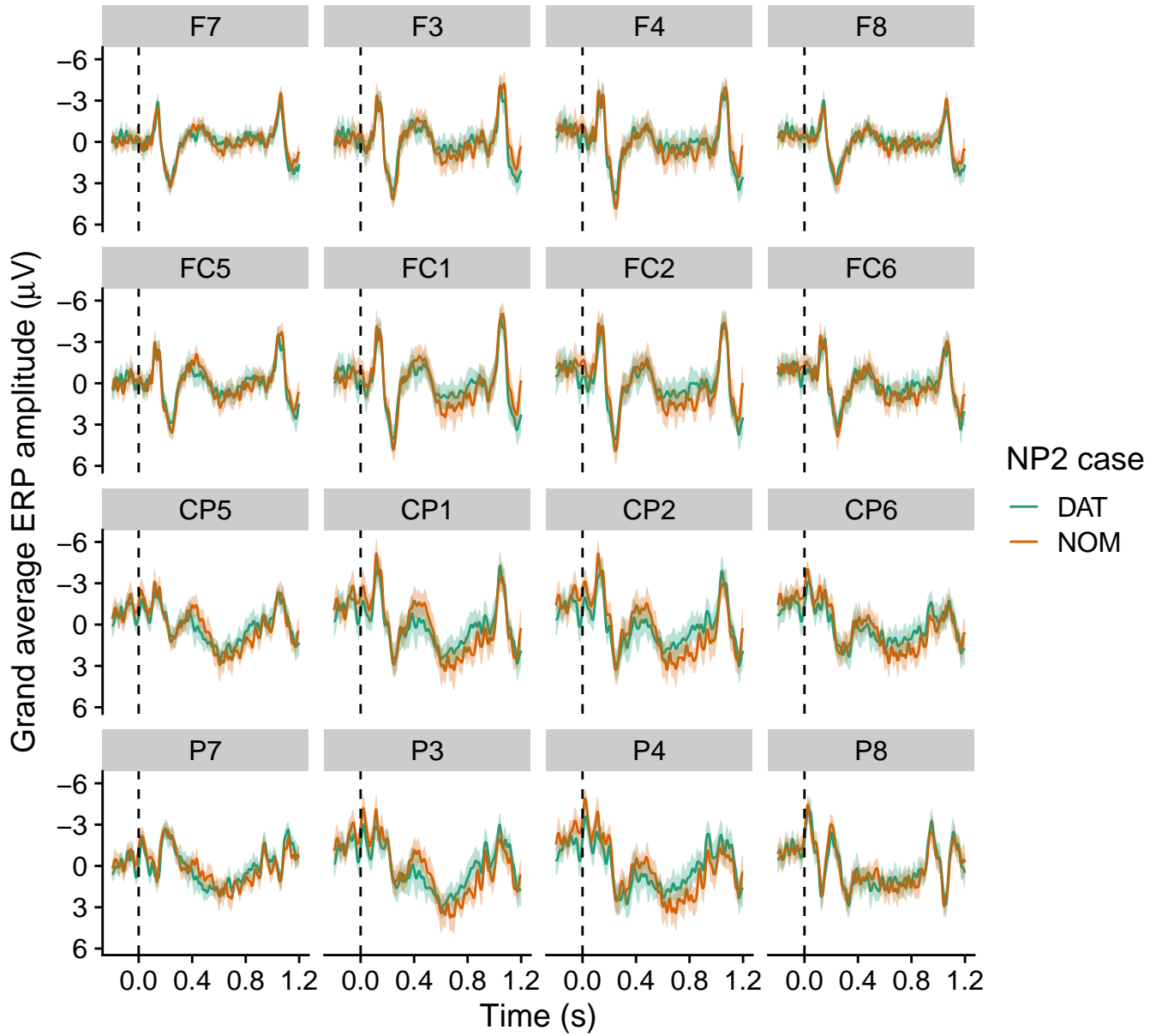


Figure S5: Grand average ERPs for Experiencer verbs. Shaded regions show 95% confidence intervals by participants

Grand average ERPs – EXP verbs

95% CIs by participant

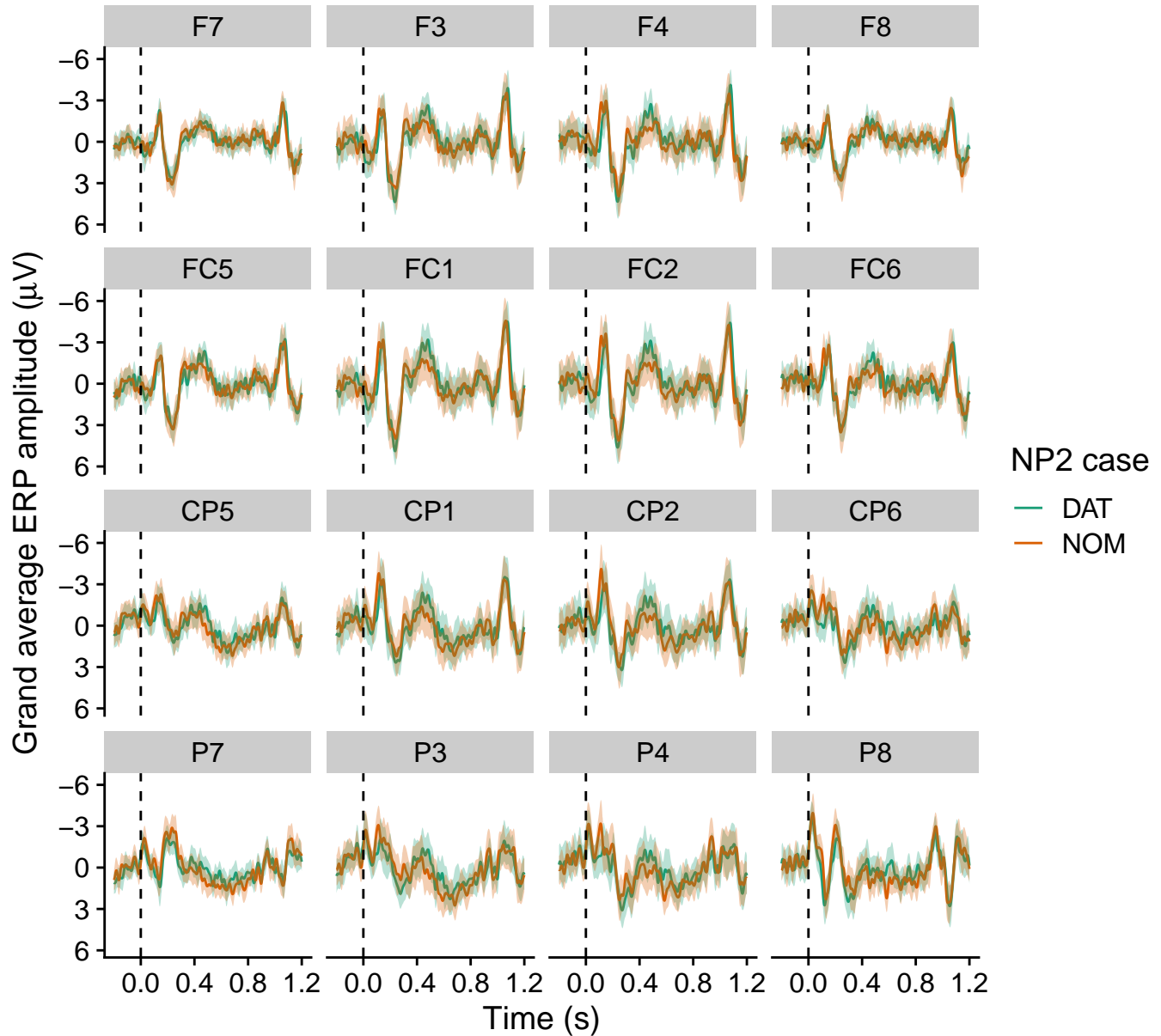


Figure S6: Grand average ERPs for Experiencer verbs. Shaded regions show 95% confidence intervals by items

Grand average ERPs – EXP verbs

95% CIs by item

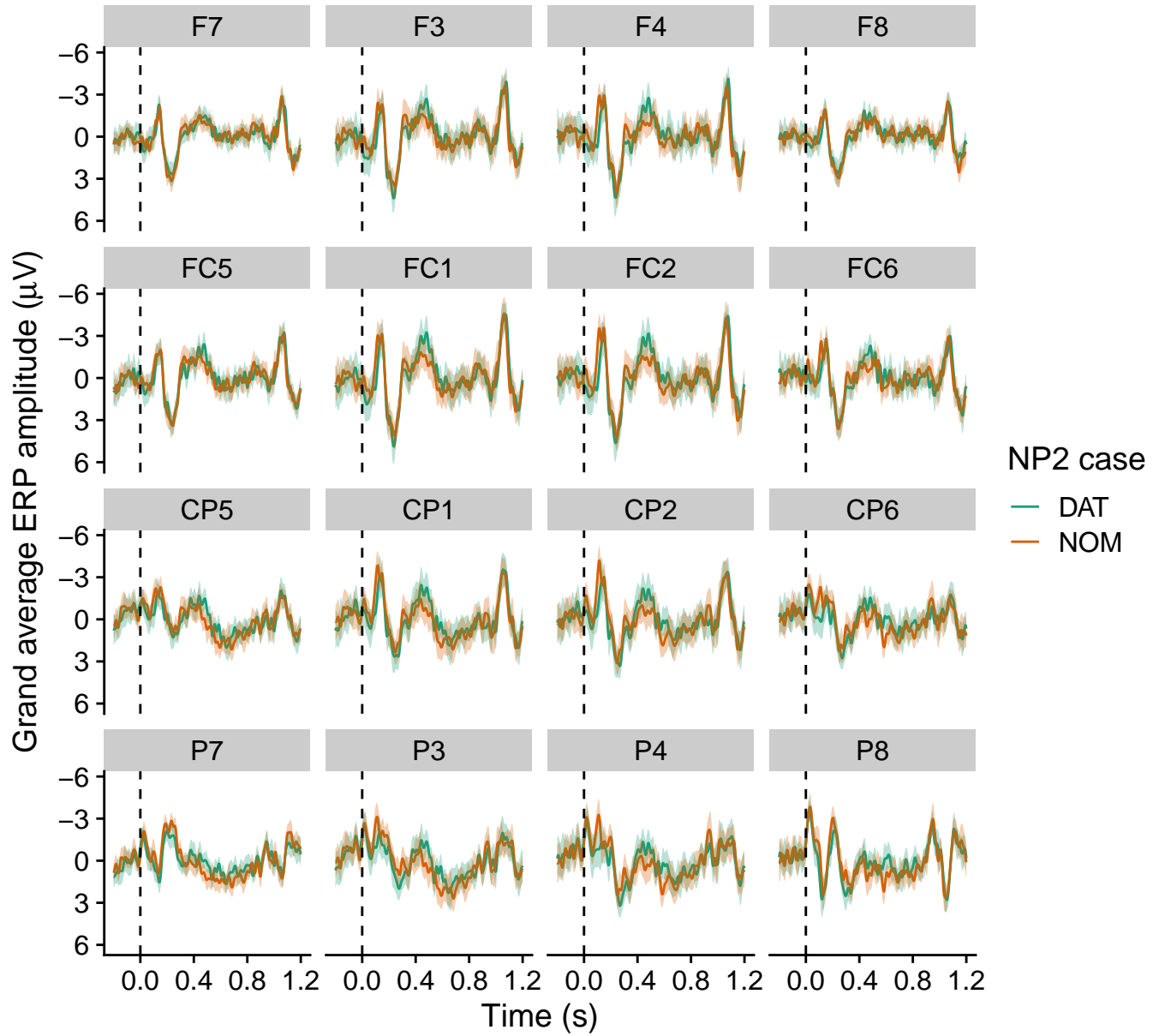


Figure S7: Resolution of verb type x case x trial x sagittality x prestimulus amplitude interaction for the N400 time window. Prestimulus amplitude = $-5 \mu V$.

N400 amplitude as modelled \sim verb type, case, trial and sagittality – prestim = -5
 Model includes by-participant random slopes for case*verb and by-item random slopes for case

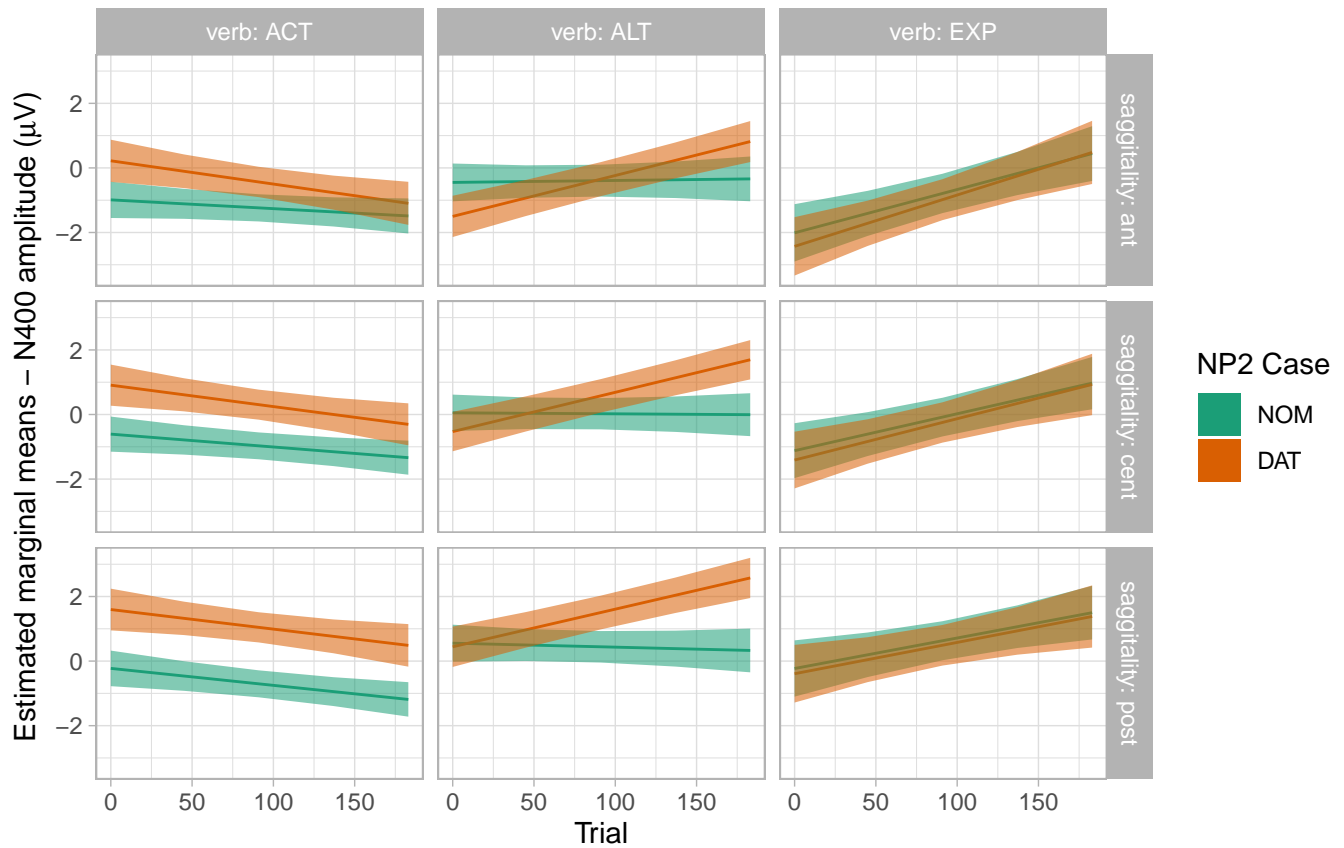


Figure S8: Resolution of verb type x case x trial x sagittality x prestimulus amplitude interaction for the N400 time window. Prestimulus amplitude = 0 μV .

N400 amplitude as modelled \sim verb type, case, trial and sagittality – prestim = 0
 Model includes by-participant random slopes for case*verb and by-item random slopes for case

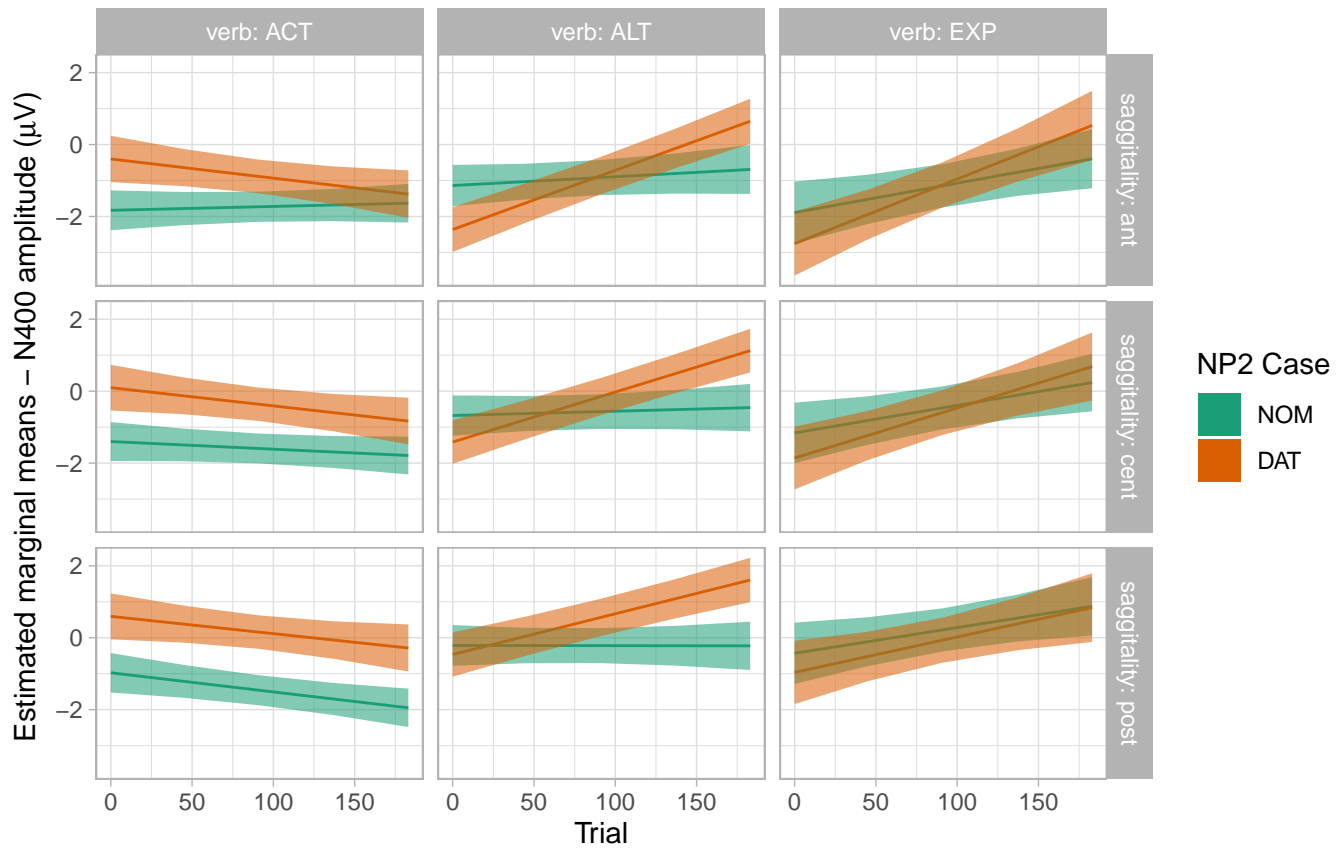


Figure S9: Resolution of verb type x case x trial x sagittality x prestimulus amplitude interaction for the N400 time window. Prestimulus amplitude = 5 μV .

N400 amplitude as modelled ~ verb type, case, trial and sagittality – prestim = 5
Model includes by-participant random slopes for case*verb and by-item random slopes for case

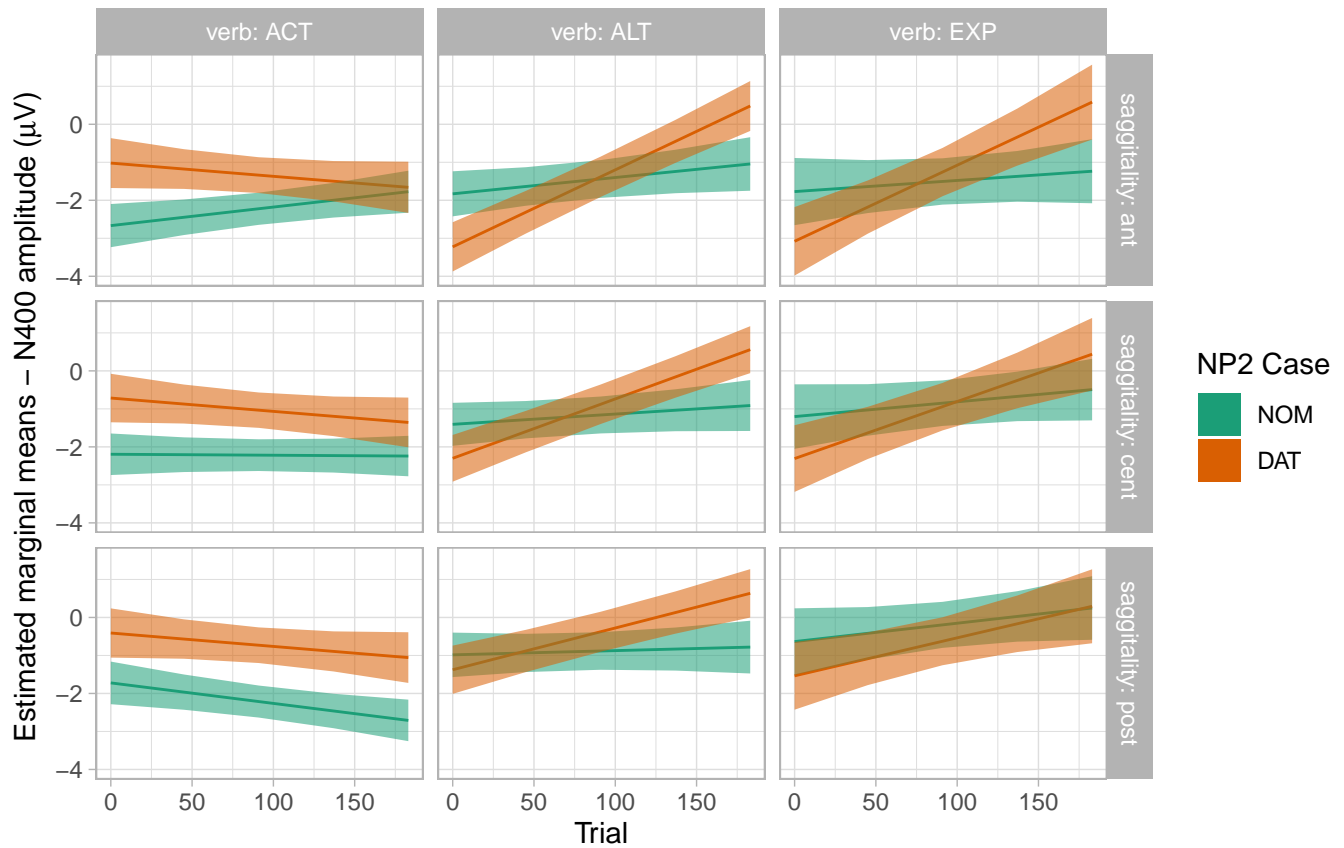


Figure S10: Resolution of verb type x case x trial x prestimulus amplitude interaction for the late positivity time window. Prestimulus amplitude = $-5 \mu V$.

LPS amplitude as modelled \sim verb type, case, trial and saggitality – prestim = -5
 Model includes by-participant random slopes for case*verb and by-item random slopes for case

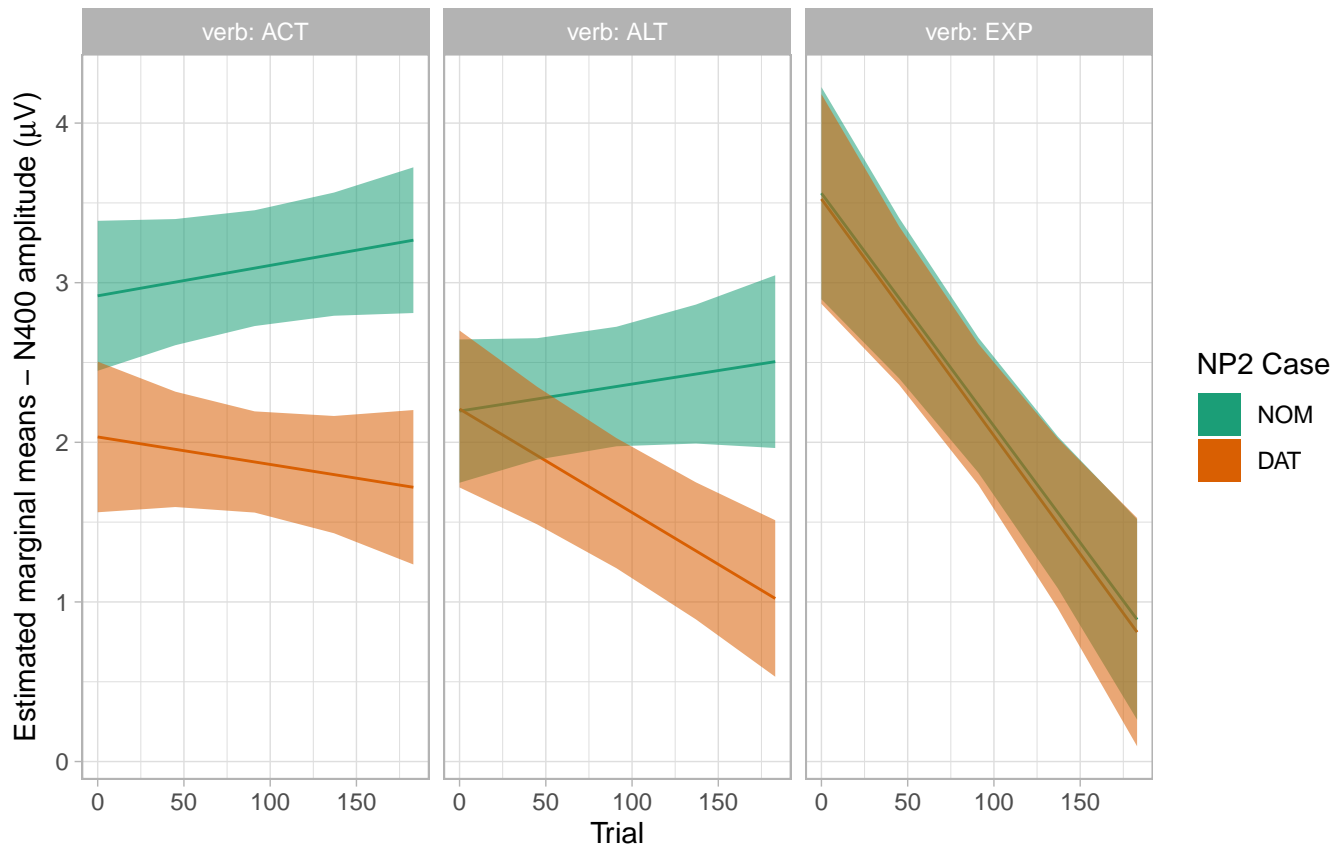


Figure S11: Resolution of verb type x case x trial x prestimulus amplitude interaction for the late positivity time window. Prestimulus amplitude = 0 μV .

LPS amplitude as modelled ~ verb type, case, trial and saggitality – prestim = 0
 Model includes by-participant random slopes for case*verb and by-item random slopes for case

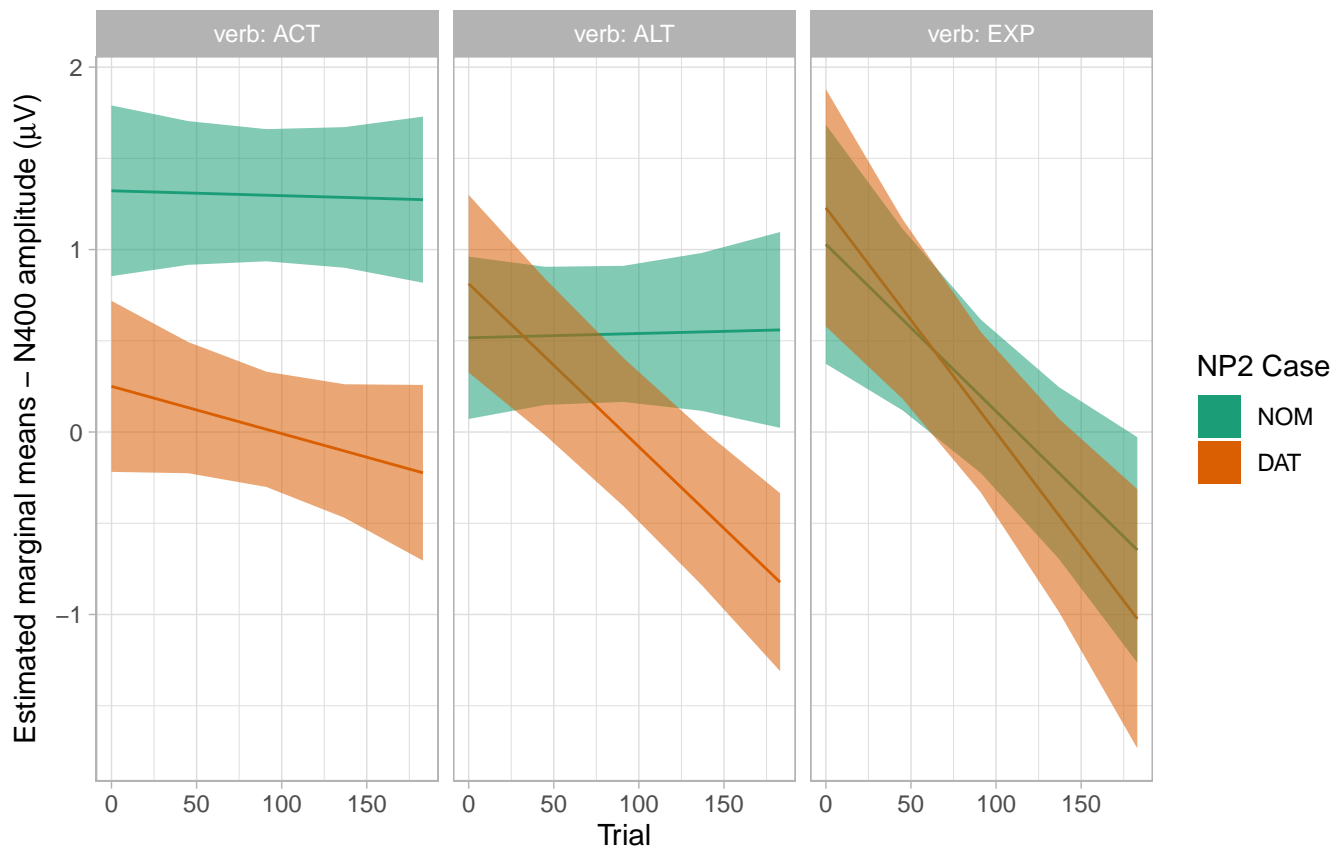


Figure S12: Resolution of verb type x case x trial x prestimulus amplitude interaction for the late positivity time window. Prestimulus amplitude = 5 μ V.

LPS amplitude as modelled ~ verb type, case, trial and saggitality – prestim = 5
 Model includes by-participant random slopes for case*verb and by-item random slopes for case

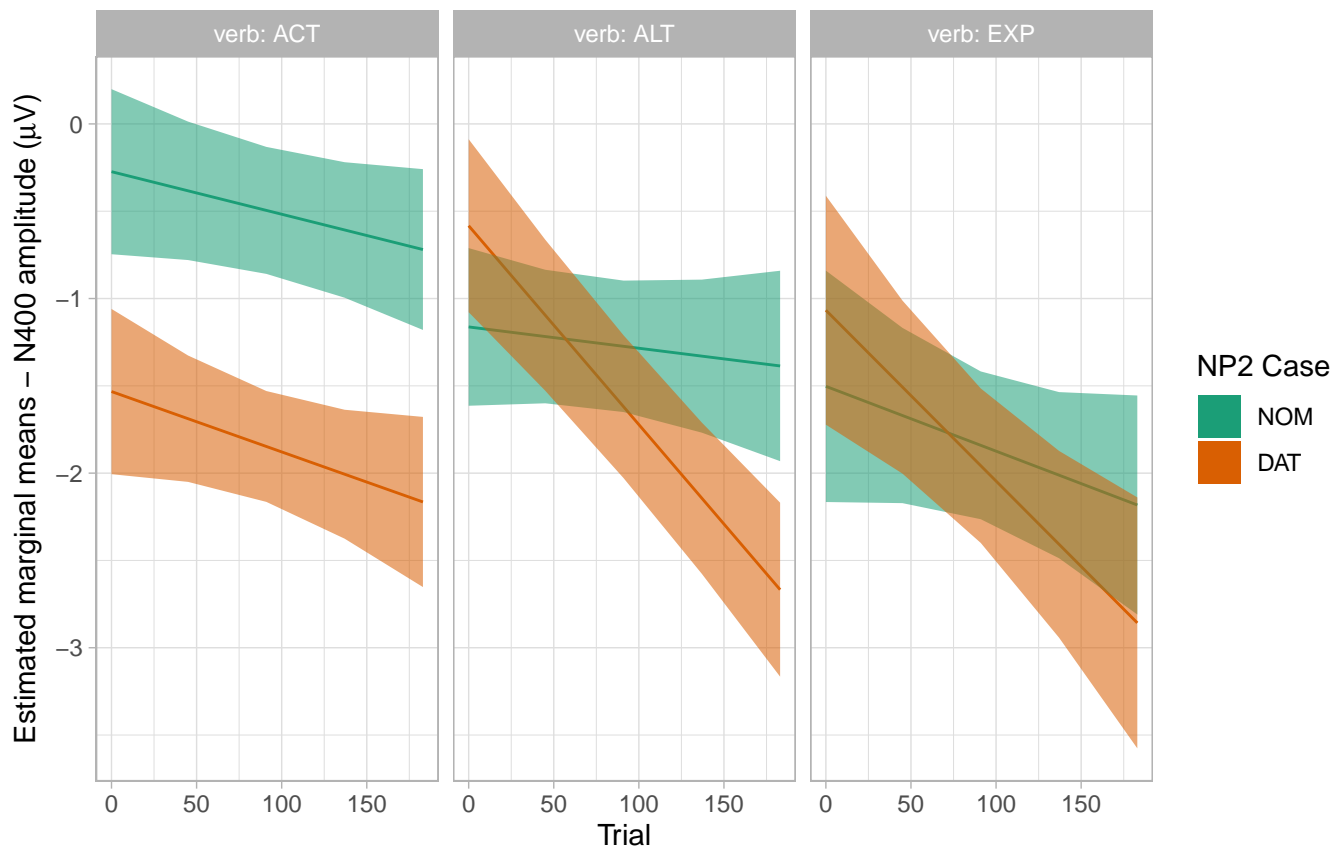


Figure S13: Resolution of case x acceptability x trial x prestimulus amplitude interaction for experienter verbs in the late positivity time window. Prestimulus amplitude = $-5 \mu V$.

LPS amplitude as modelled for exp. verbs ~ case, trial and accept. – prestim = -5
 Model includes by-participant and by-item random slopes for case

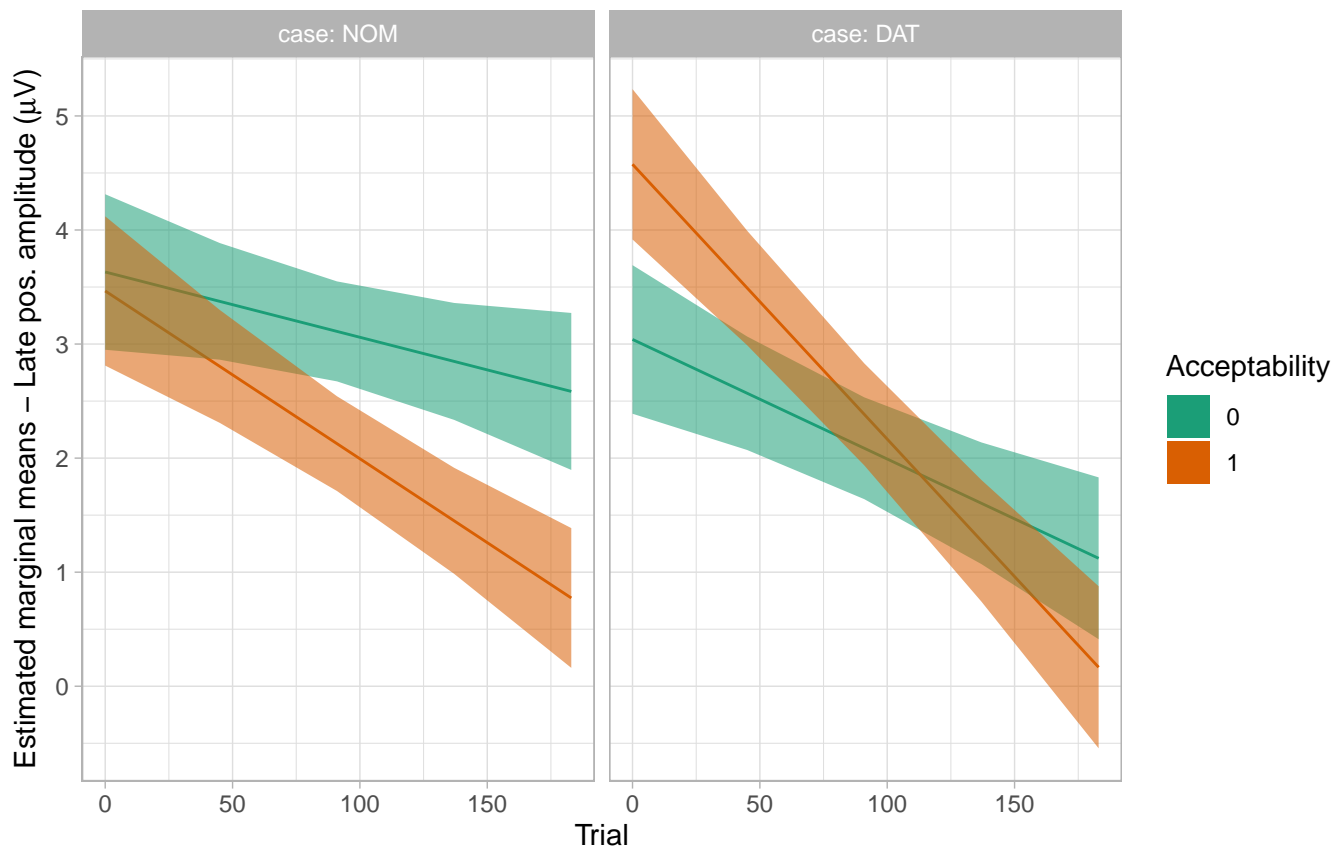


Figure S14: Resolution of case x acceptability x trial x prestimulus amplitude interaction for experienter verbs in the late positivity time window. Prestimulus amplitude = 0 μV .

LPS amplitude as modelled for exp. verbs ~ case, trial and accept. – prestim = 0
Model includes by-participant and by-item random slopes for case

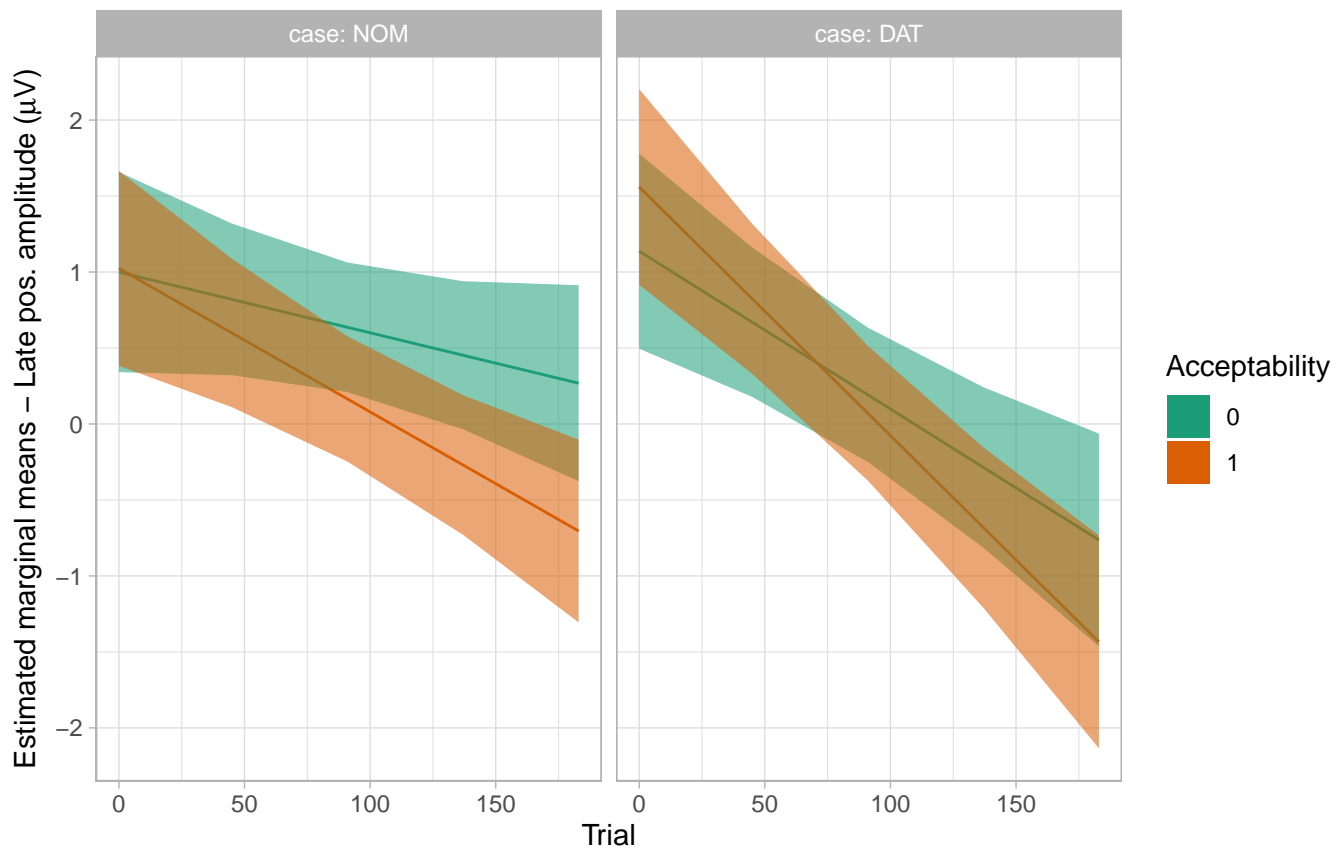


Figure S15: Resolution of case x acceptability x trial x prestimulus amplitude interaction for experienter verbs in the late positivity time window. Prestimulus amplitude = 5 μV .

LPS amplitude as modelled for exp. verbs ~ case, trial and accept. – prestim = 5
Model includes by-participant and by-item random slopes for case

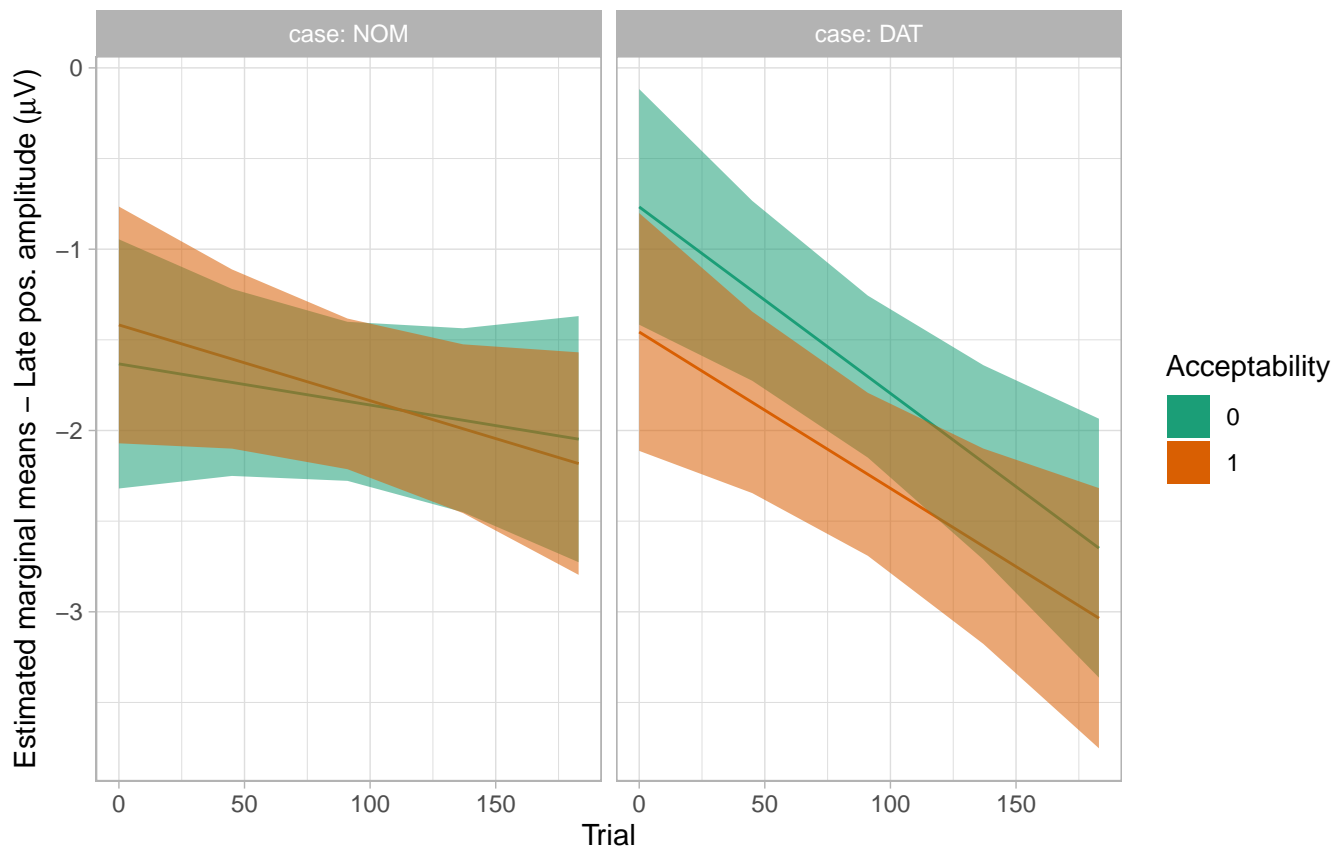


Figure S16: Trial-by-trial acceptabilities as predicted by N400 amplitude and verb type.

By-trial acceptability by N400 amplitude and verb class

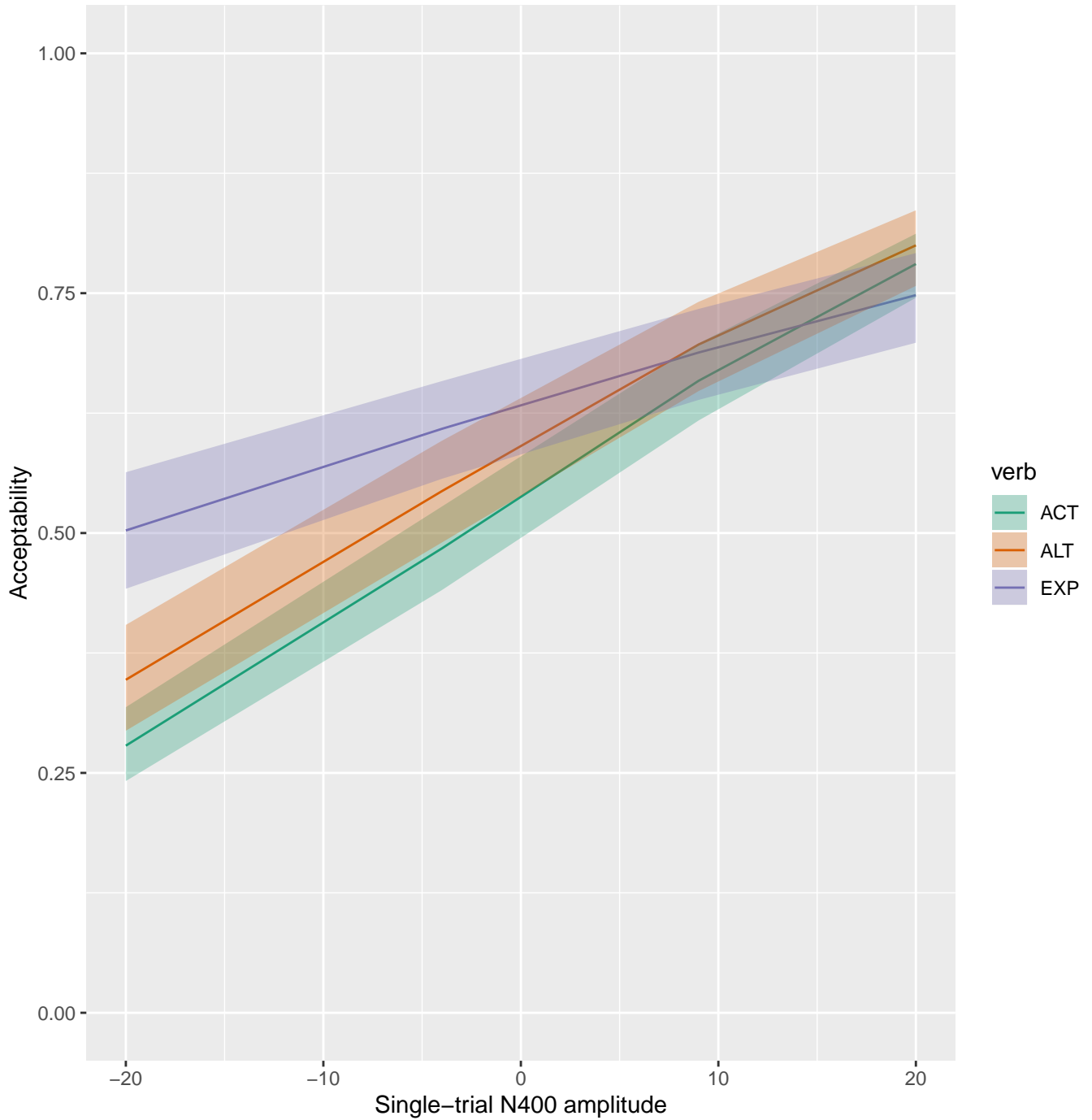


Figure S17: Trial-by-trial acceptabilities as predicted by late positivity amplitude and verb type.

By-trial acceptability by LPS amplitude and verb class

