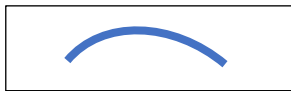


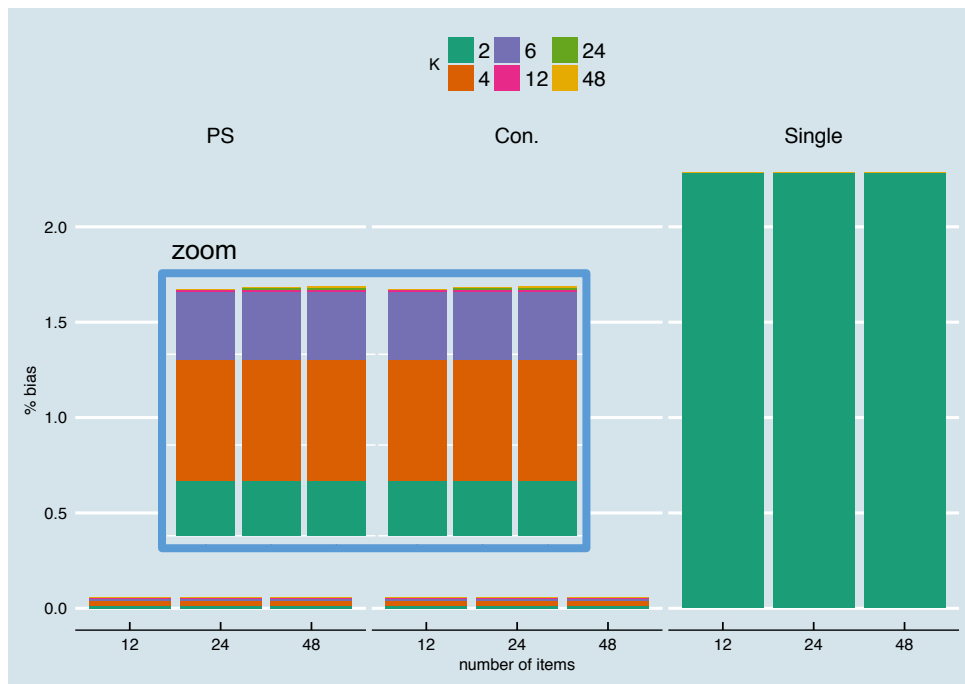
PART IV

The figures below show the percentage bias and the coefficient of variation (CV) for continuous parallel test scores and truncated and rounded parallel test scores for the four different relationships depicted in Figure 5 separately.

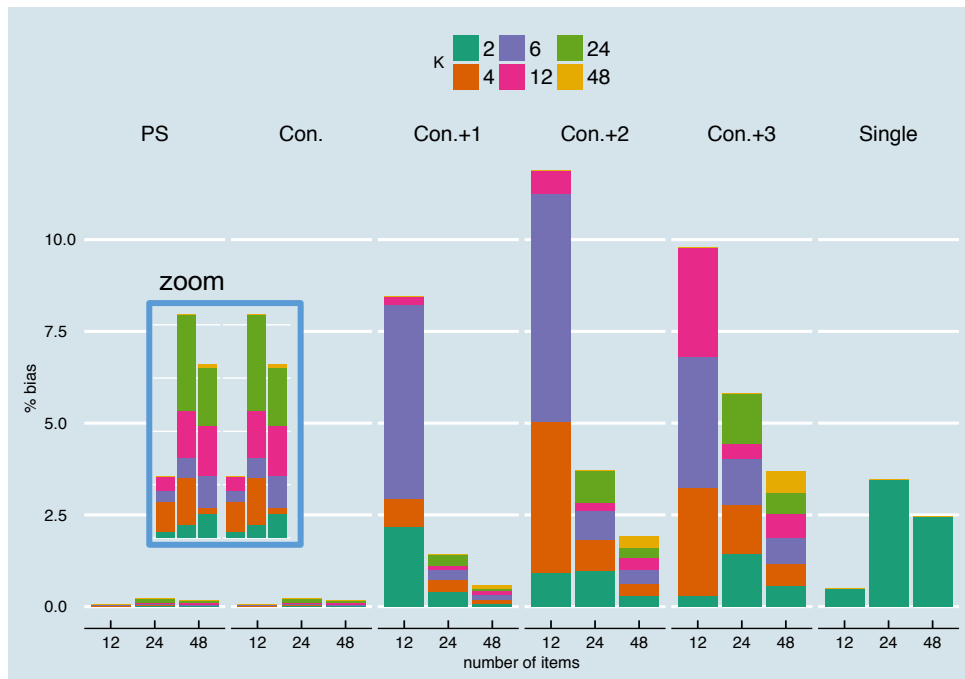


Relationship 1

%bias, after 10,000 test takes

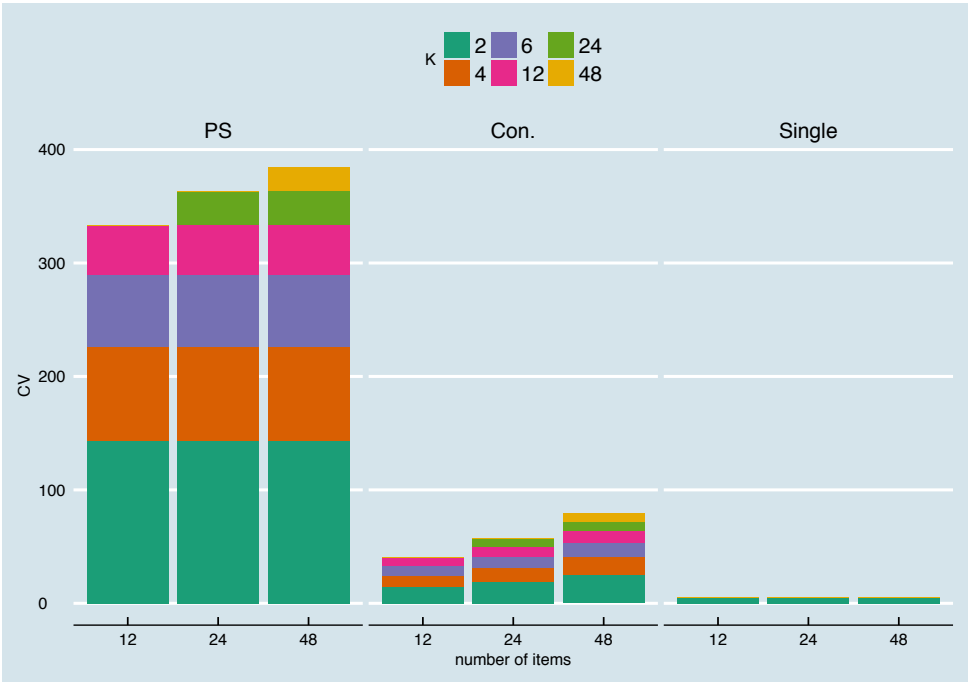


Based on continuous parallel test scores

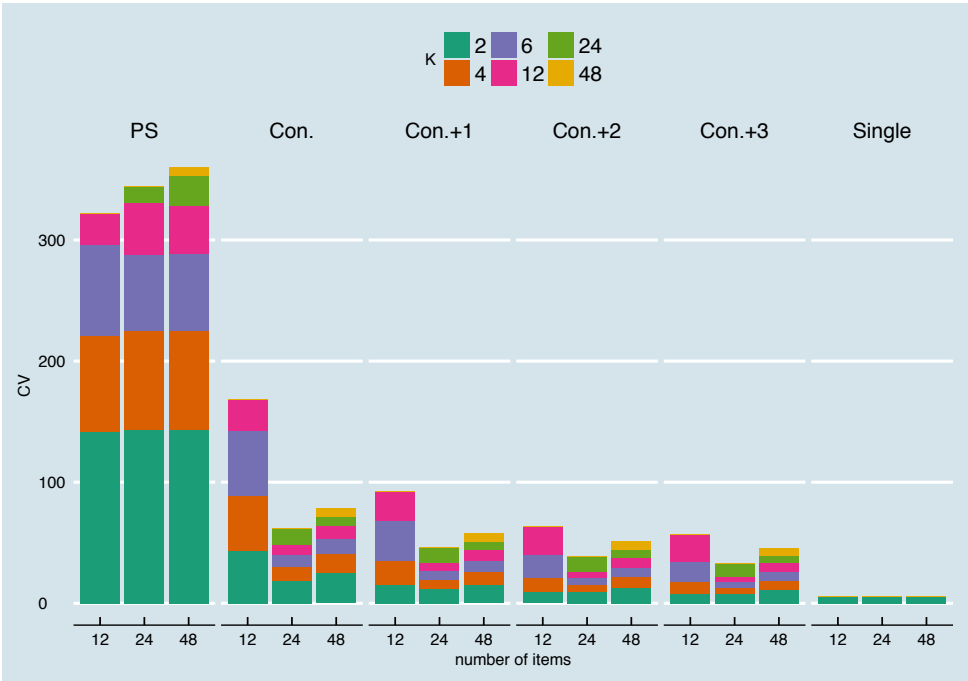


Based on rounded and truncated parallel test scores

Coefficient of variation, after 10,000 test takes



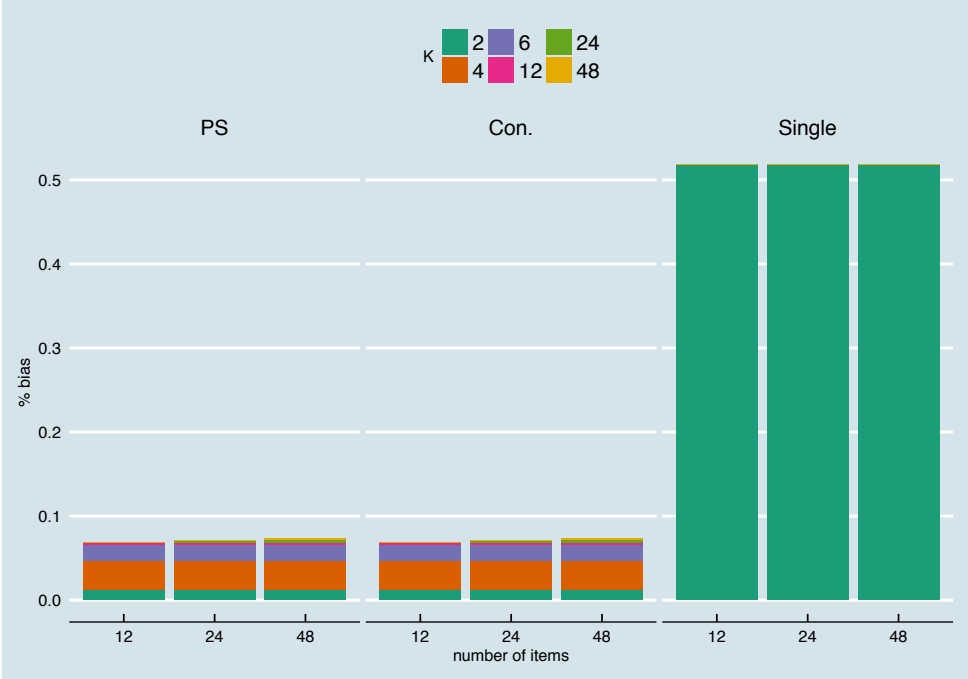
Based on continuous parallel test scores



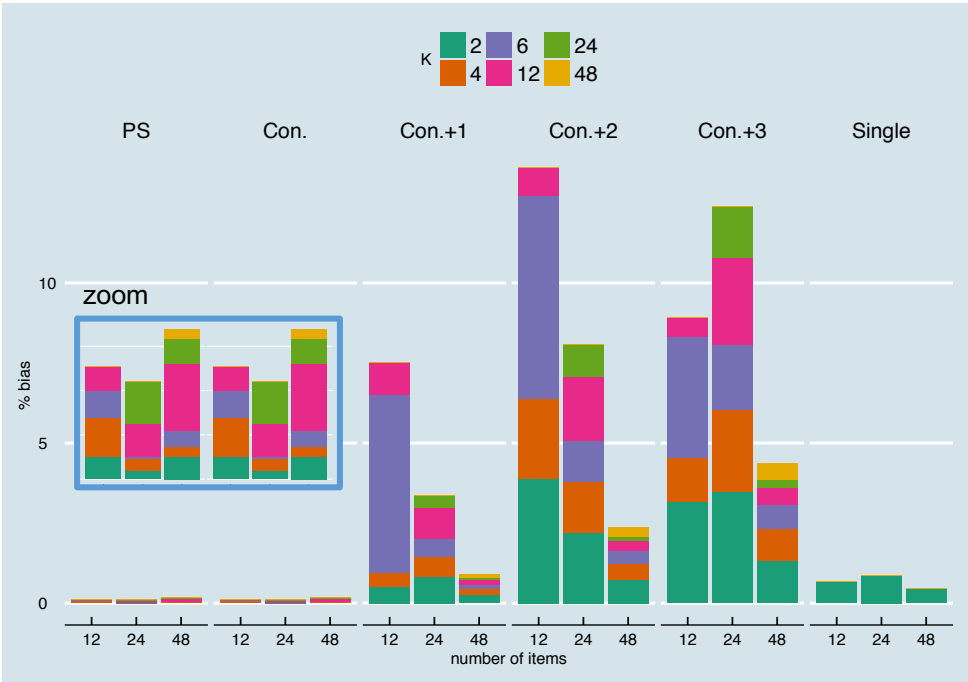
Based on rounded and truncated parallel test scores



%bias, after 10,000 test takes

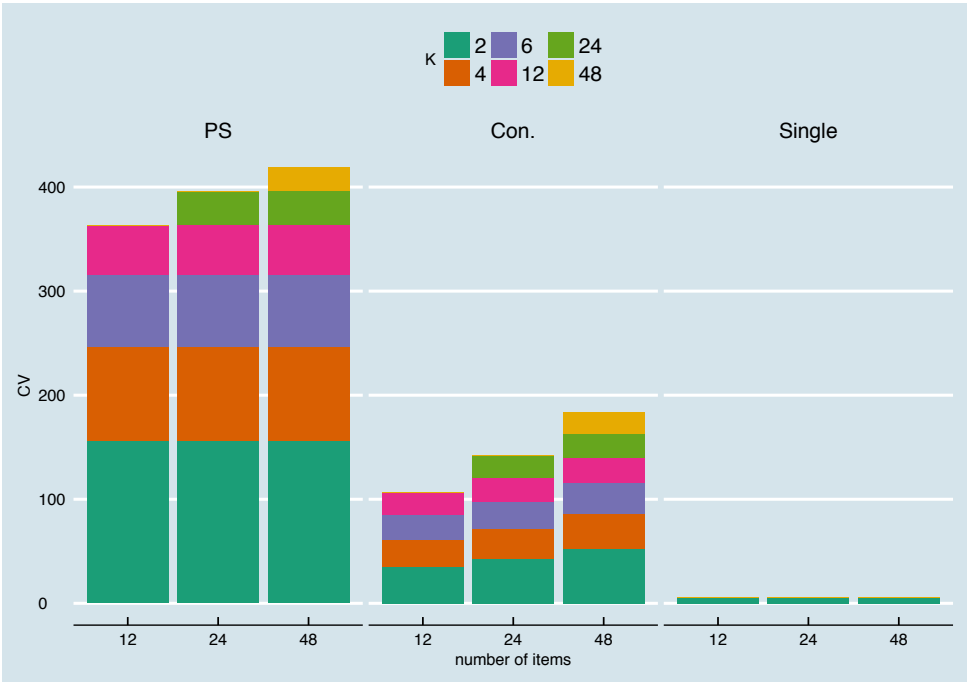


Based on continuous parallel test scores

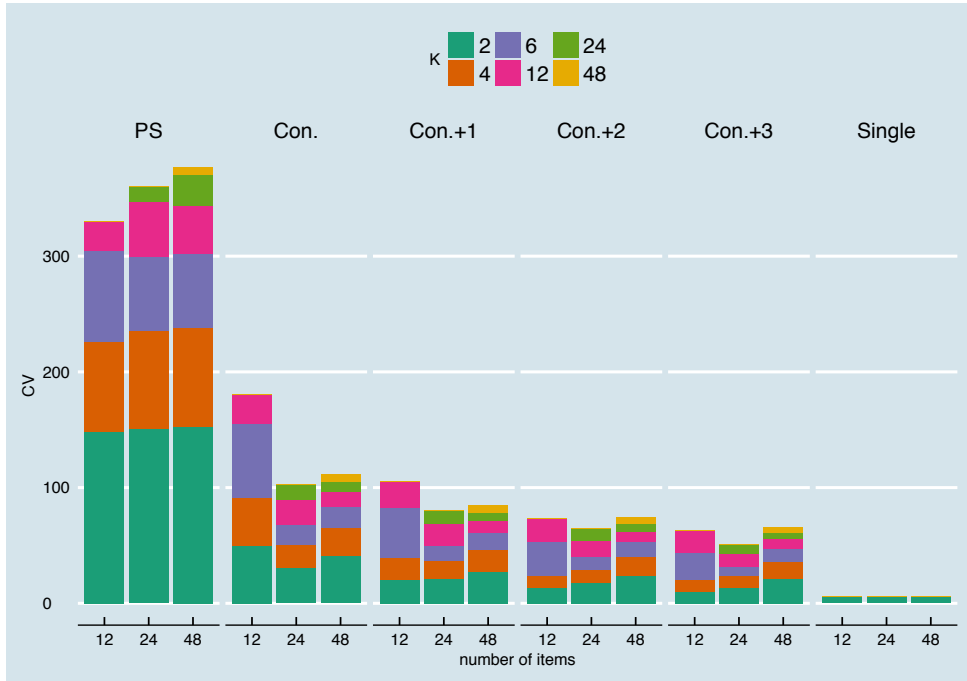


Based on rounded and truncated parallel test scores

Coefficient of variation, after 10,000 test takes



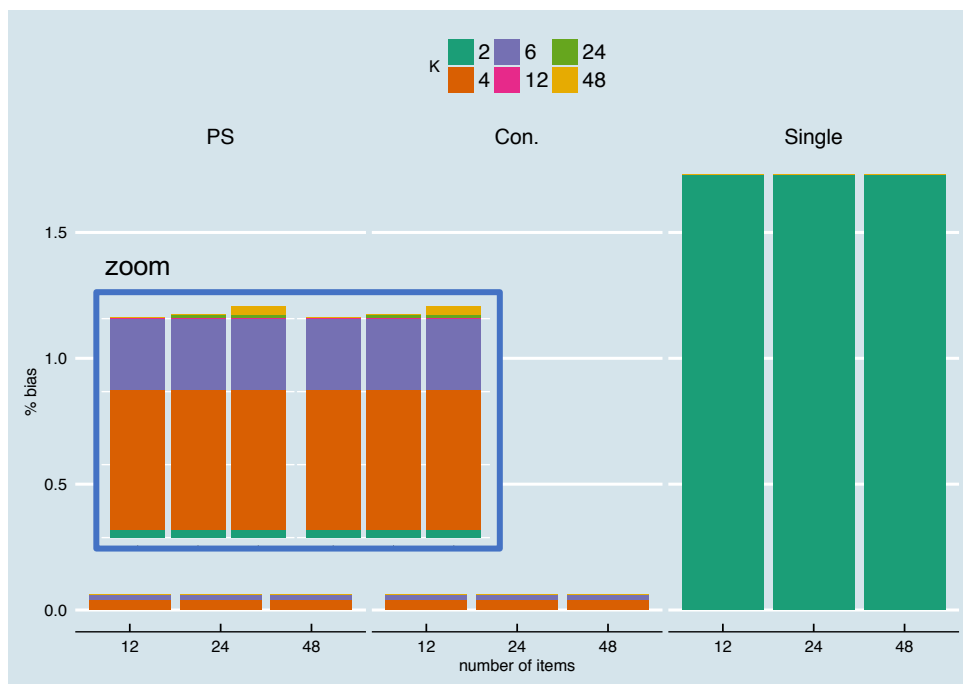
Based on continuous parallel test scores



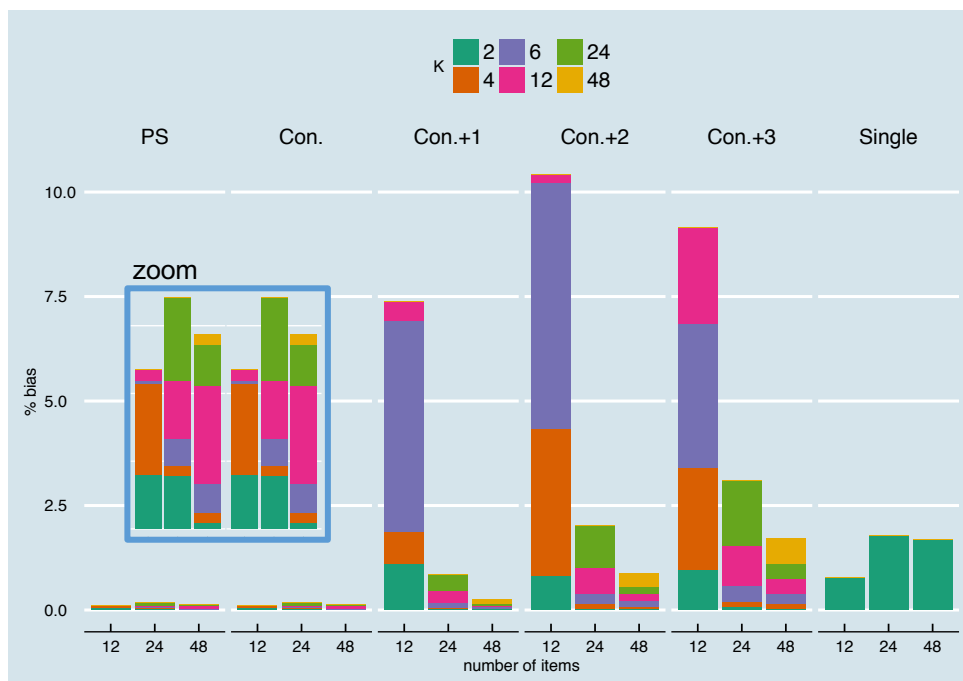
Based on rounded and truncated parallel test scores



%bias, after 10,000 test takes

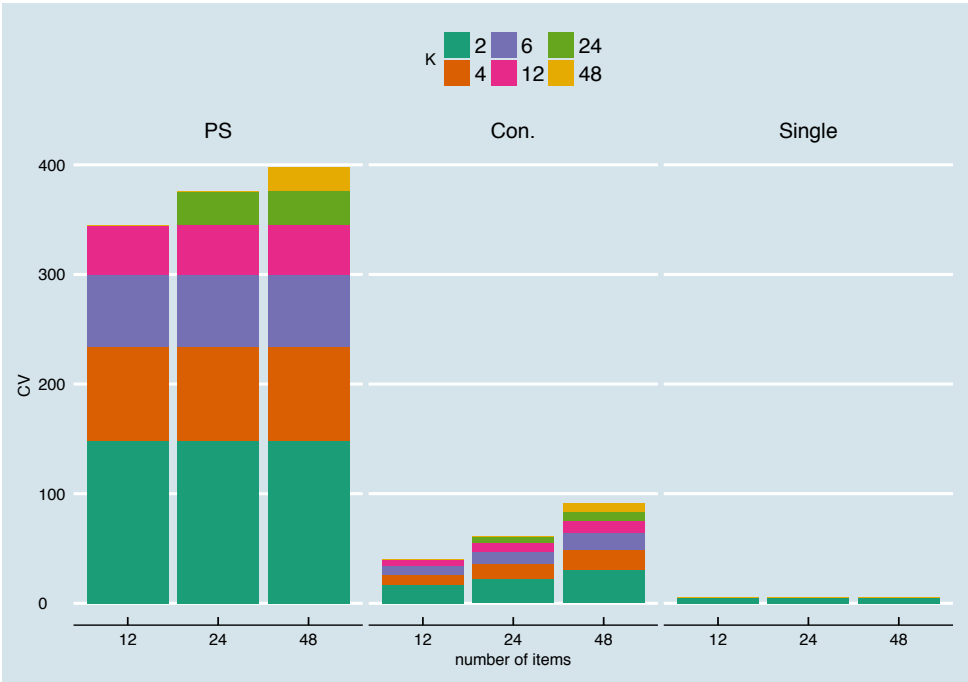


Based on continuous parallel test scores

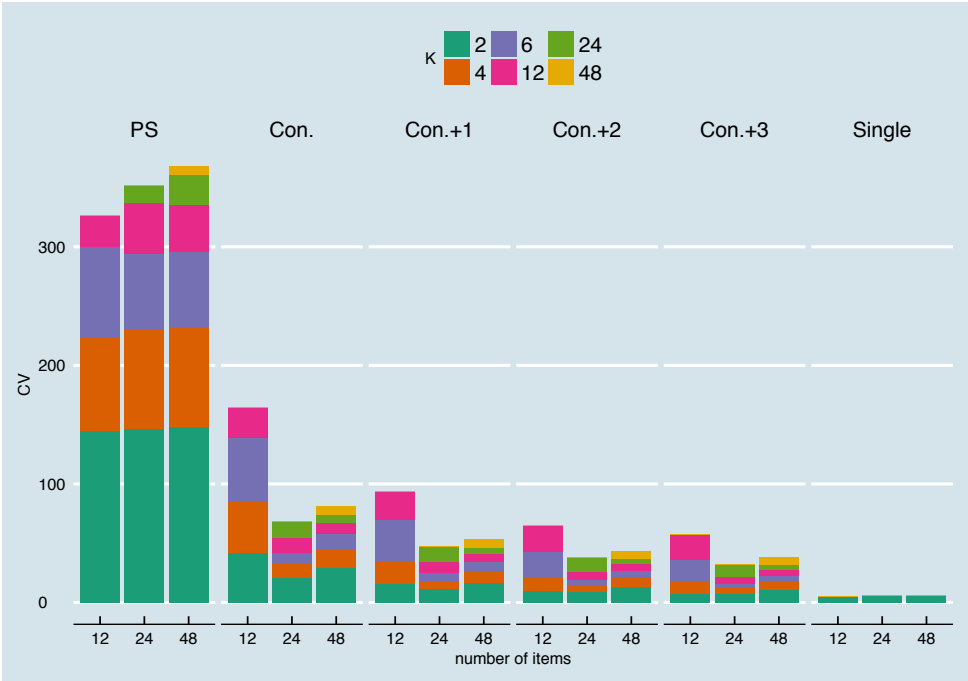


Based on rounded and truncated parallel test scores

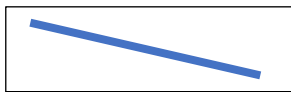
Coefficient of variation, after 10,000 test takes



Based on continuous parallel test scores

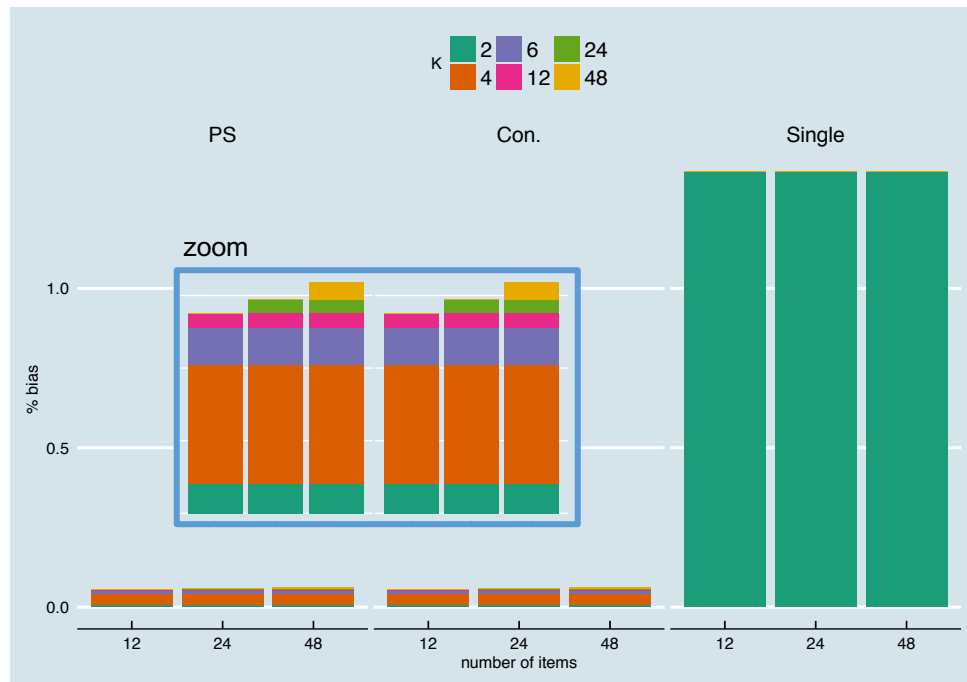


Based on rounded and truncated parallel test scores

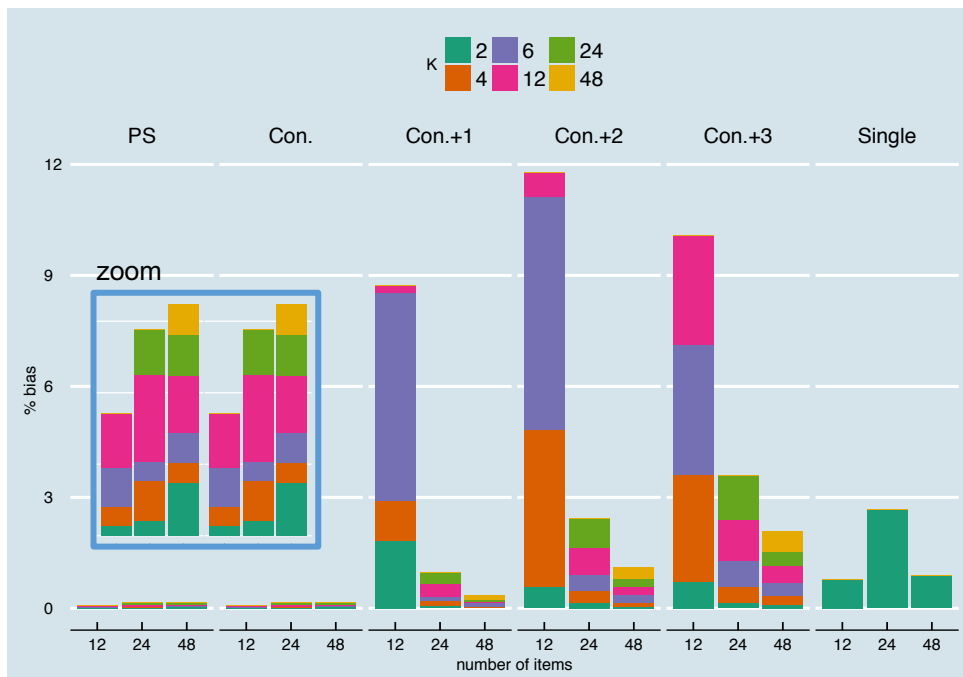


Relationship 4

%bias, after 10,000 test takes

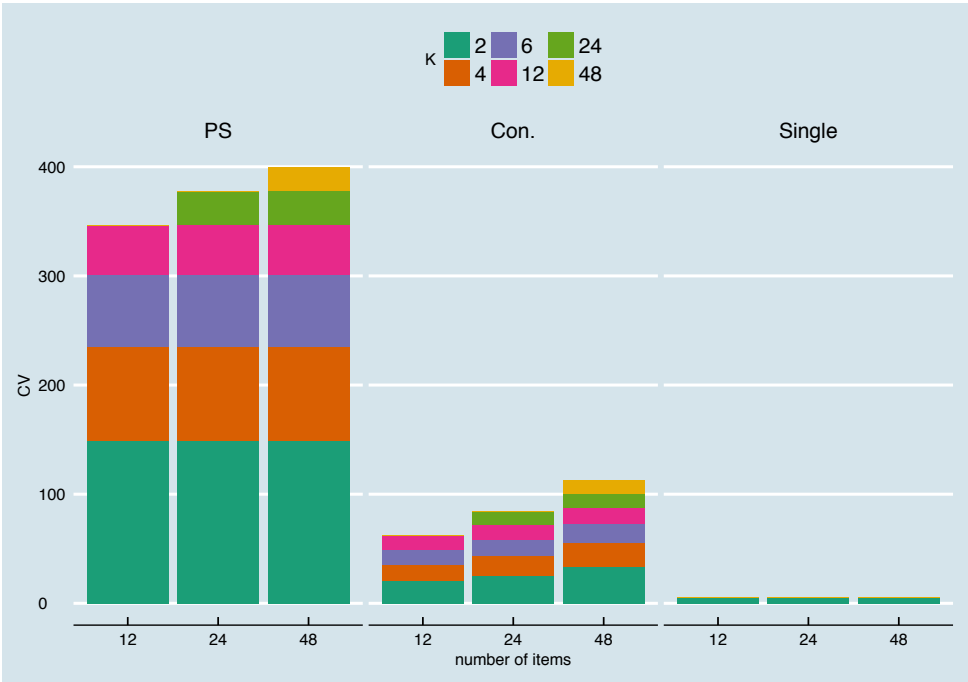


Based on continuous parallel test scores

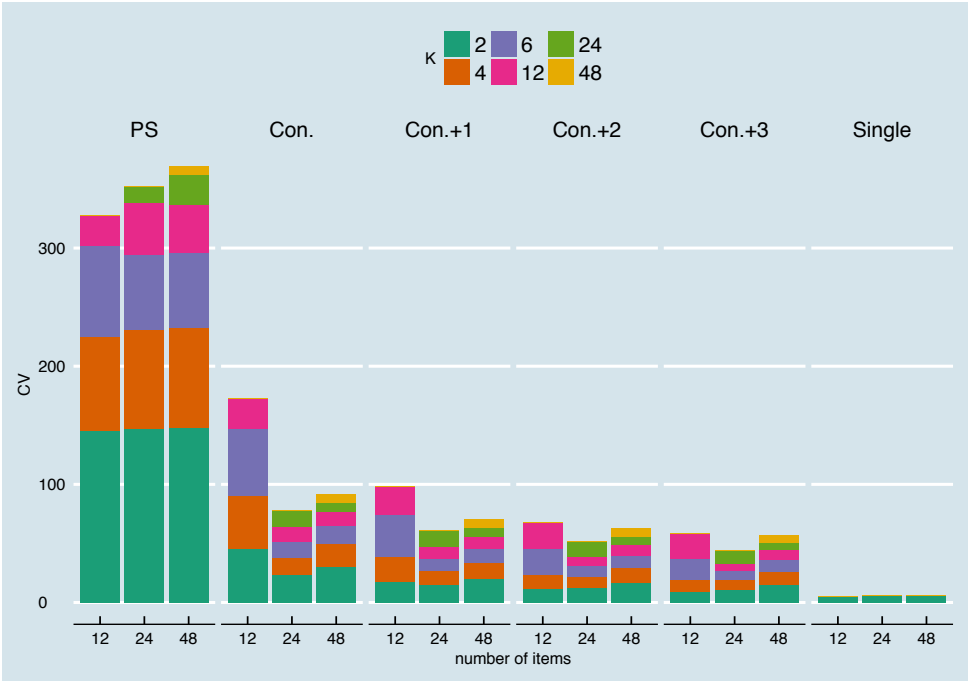


Based on rounded and truncated parallel test scores

Coefficient of variation, after 10,000 test takes



Based on continuous parallel test scores



Based on rounded and truncated parallel test scores