

Supplemental figures

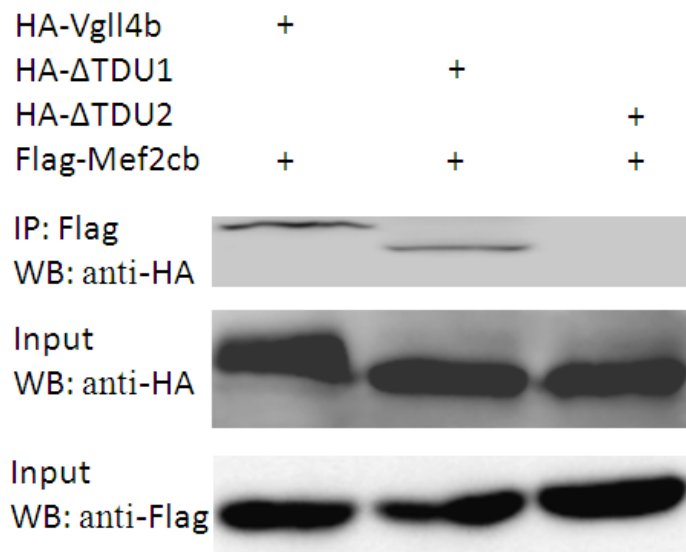


Figure 1: Wild type Vgll4b and Vgll4b ΔTDU1 mutant, but not the ΔTDU2 mutant, was immunoprecipitated (IP) from HEK293T cells coexpressing Mef2cb.

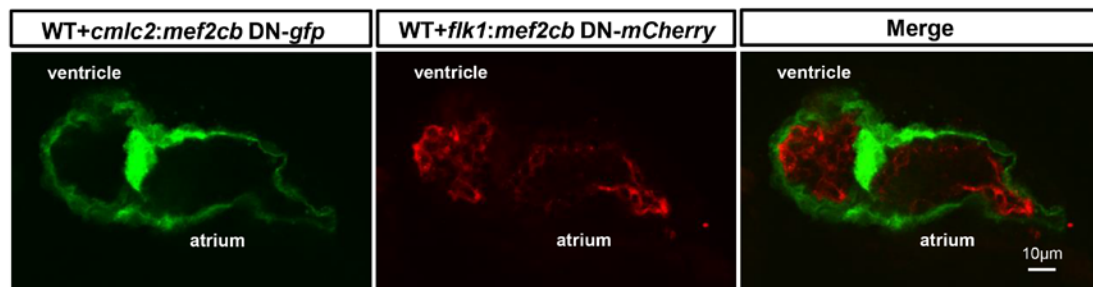


Figure 2: *Cmlc2:mef2cb* DN-*gfp* and *flk1:mef2cb* DN-*mCherry* plasmids (both in Tol2 backbone) were transiently expressed in zebrafish embryos by co-injecting 80 pg of Tol2-plasmids and 120 pg of Tol2 transpose mRNA at one-cell stage. At 52hpf, the signal of GFP could be specifically observed in myocardium, whereas that of mCherry was found only in endocardium.