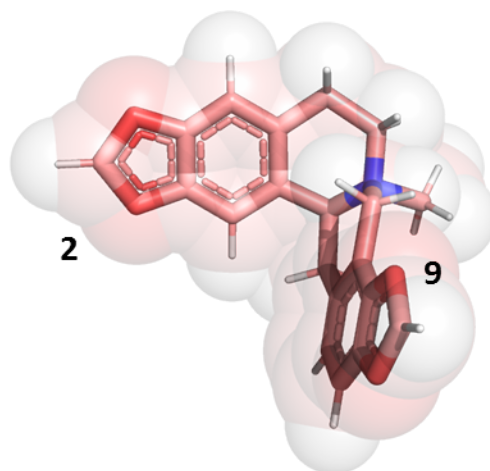
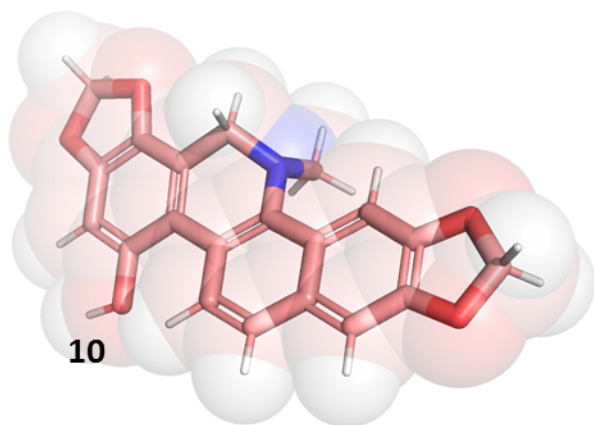


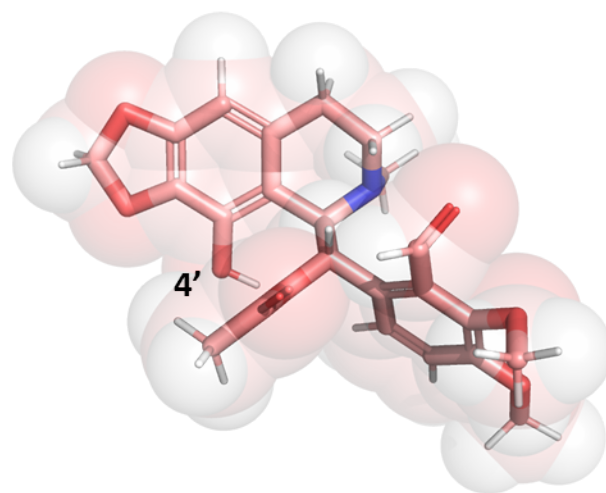
1-Benzylisoquinoline  
(Norlaudanosoline)



Protoberberine  
(*N*-Methylstylopine)



Benzo[c]phenanthridine  
(10-Hydroxydihydrosanguinarine)



Pthalideisoquinoline  
(4'-O-Desmethyl-3-O-acetylpapaveroxine)

**Supplementary Figure 5. Three dimensional structures of BIAs.** Positions of hydroxyl groups targeted by BIA OMTs are labelled with atom numbers corresponding to Figure 2 and Supplementary Figure 4. Where possible, experimentally determined structures are shown. Norlaudanosoline was extracted from the Tf6OMT crystal structure (PDB 5ICE). (*S*)-*cis*-*N*-methylstylopine was extracted from the GfTNMT crystal structure (PDB 63PO). 10-Hydroxydihydrosanguinarine and 4'-O-desmethyl-3-O-acetylpapaveroxine were downloaded from PubChem.