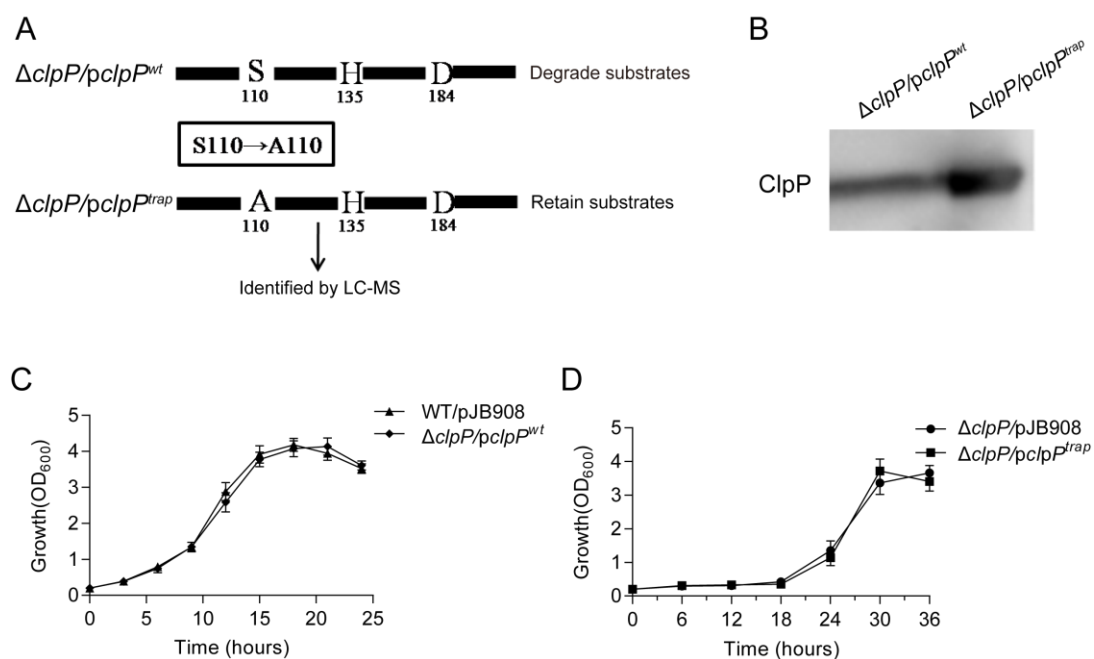


Supplementary Material



Supplementary Figure S3. Construction of the ClpP-Trap System successfully.

(A). Graphical representation of the biological construction of the ClpP-Trap system.

(B). Western blotting was used to detect the expression of ClpP in $\Delta clpP/pclpP^{wt}$ and $\Delta clpP/pclpP^{trap}$.

(C). Growth curve measurement of WT/pJB908 (▲) and $\Delta clpP/pclpP^{wt}$ (◆).

(D). Growth curve measurement of $\Delta clpP/pJB908$ (●) and $\Delta clpP/pclpP^{trap}$ (■).