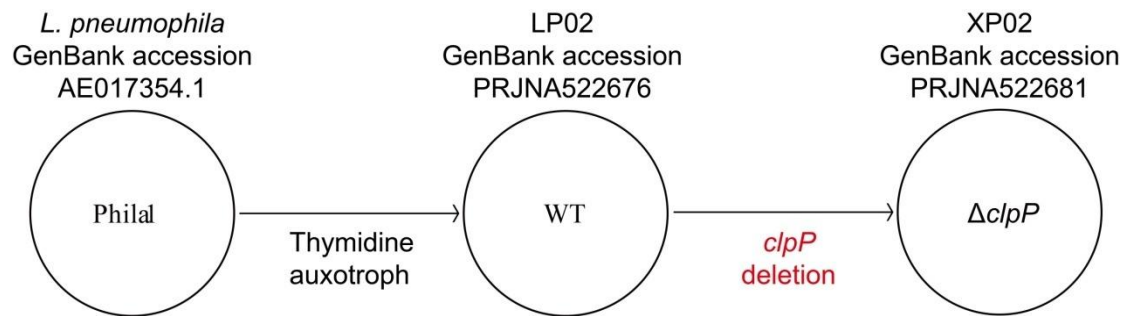


Supplementary Material



Supplementary Figure S1. Re-sequencing of the laboratory strains of *L. pneumophila* Philadelphia-1 reveals that only *clpP* gene was deleted in $\Delta clpP$ compared to WT.

The results of whole genome re-sequencing showed that the *clpP* is the only deleted gene in $\Delta clpP$ strain compared to WT strain, which not only supports the reliability of our previous reports (Li *et al.*, 2010, Zhao *et al.*, 2016), but also suggests that it is not necessary to include a *clpP* complement strain $\Delta clpP/C$ in the indicated experiments.