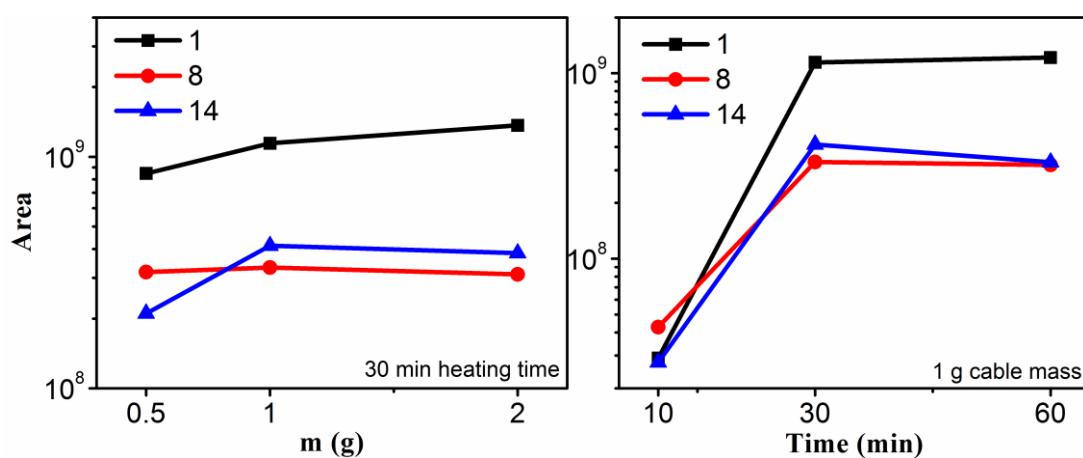
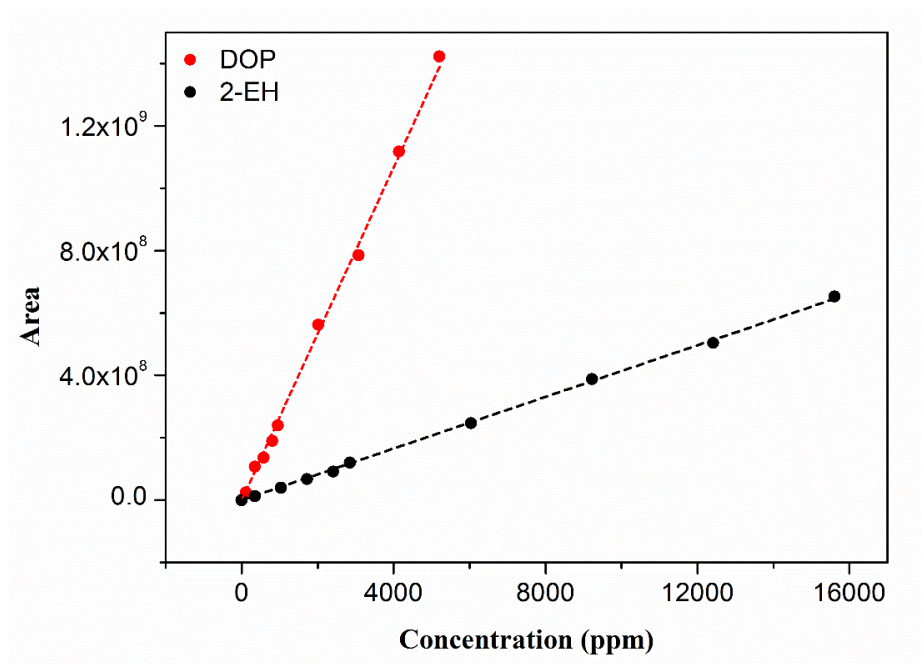


## Supplementary Material

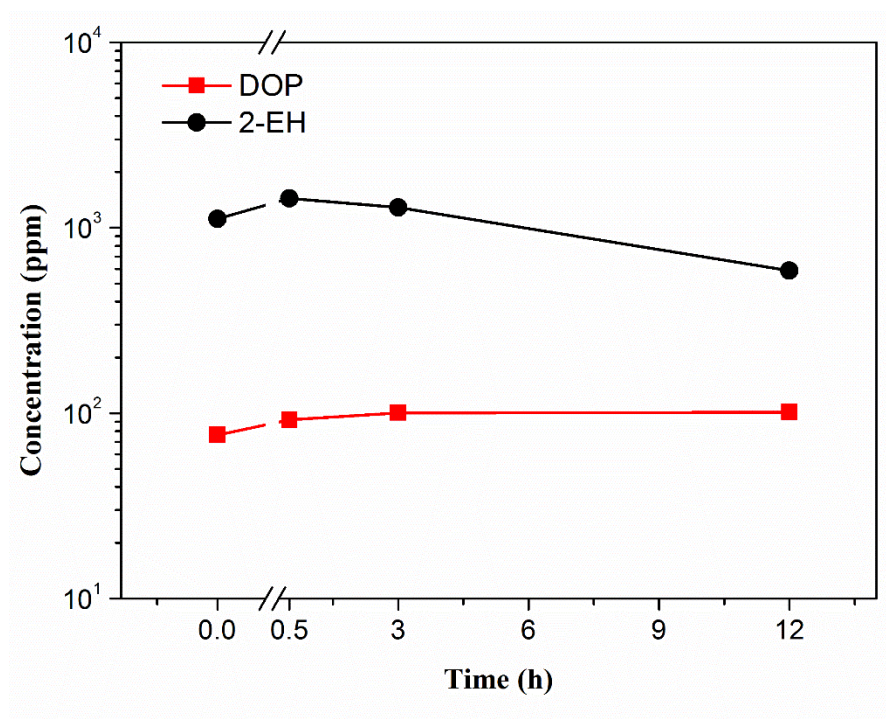
### 1 Supplementary Figures



**Supplementary Figure 1.** GC-MS peak areas of the three most abundant species in vapors for Cable 1 as a function of (left) cable mass and (right) heating time in the headspace bottle at 200 °C. Numbers for the different symbols represent corresponding peaks in Table 2.



**Supplementary Figure 2.** Calibration curves obtained by injection of 2-EH and DOP standards in GC-MS.



**Supplementary Figure 3.** Concentration of DOP and 2-EH for vapors of Cable 1 as a function of pre-heating time in open air at  $150^\circ\text{C}$  prior to being sealed and heated in a headspace bottle.