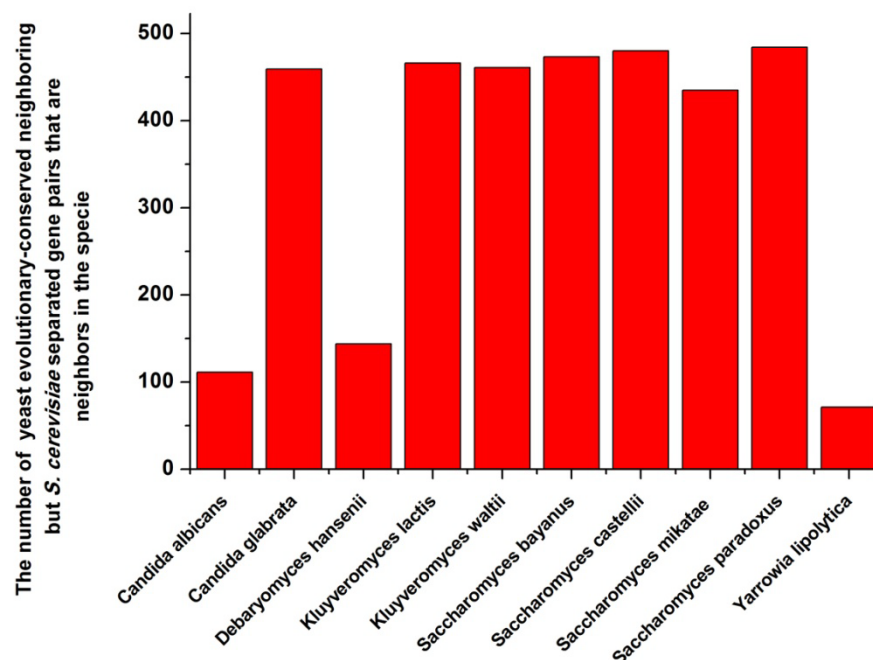
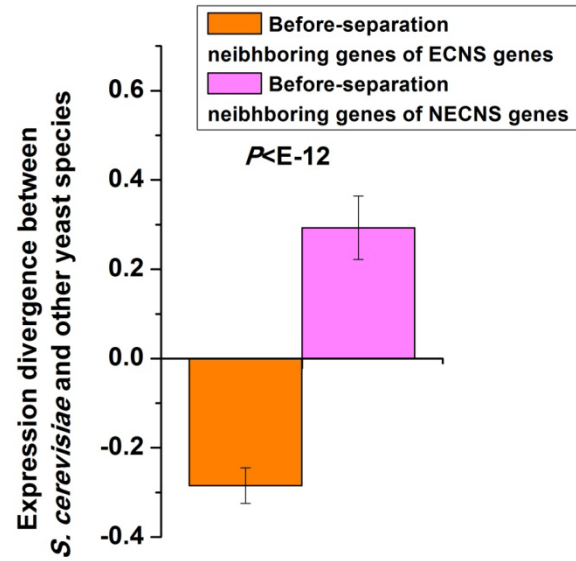


Supplementary Material

1 Supplementary Figures



Supplementary Figure 1. For each species, the number of yeast evolutionary-conserved neighboring but *S. cerevisiae* separated gene pairs that are neighbors in this species was indicated.



Supplementary Figure 2. Before-separation neighboring genes of ECNS genes also show lower expression divergence than those of NECNS genes. Median values that correspond to expression divergence between *S. cerevisiae* and other yeast species were shown for before-separation neighboring genes of ECNS genes and NECNS genes. Error bars were calculated by bootstrapping. The statistical significant value calculated from Mann-Whitney U-test was indicated.