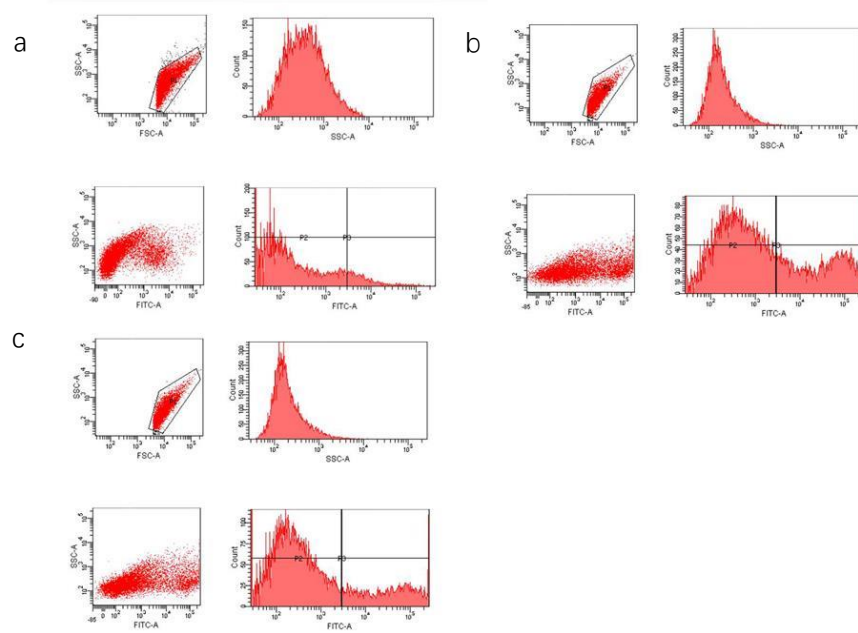


1. NO: Fig a is the exemplary dot plots of control group (clinical strain) of flow cytometry. Fig b is the exemplary dot plots of IPL group (clinical strain) of flow cytometry. Fig c is the exemplary dot plots of IPL+L-NMMA group (clinical strain) of flow cytometry. From each sample, 10,000 events were collected. The three gates of flow cytometry were set by engineer of BD company. P1 is all fungal groups, P2 is a negative group(it was not added fluorescent probe) based on blanks, and P3 is a target fungal group (relative fluorescence intensity of expression).



2. NOS: Fig a is the exemplary dot plots of control group of flow cytometry. Fig b is the exemplary dot plots of IPL group of flow cytometry. Fig c is the exemplary dot plots of IPL+L-NMMA group of flow cytometry. From each sample, 10,000 events were collected. The three gates of flow cytometry were set by engineer of BD company. P1 is all fungal groups, P2 is a negative group(it was not added fluorescent probe) based on blanks, and P3 is a target fungal group (relative fluorescence intensity of expression).

