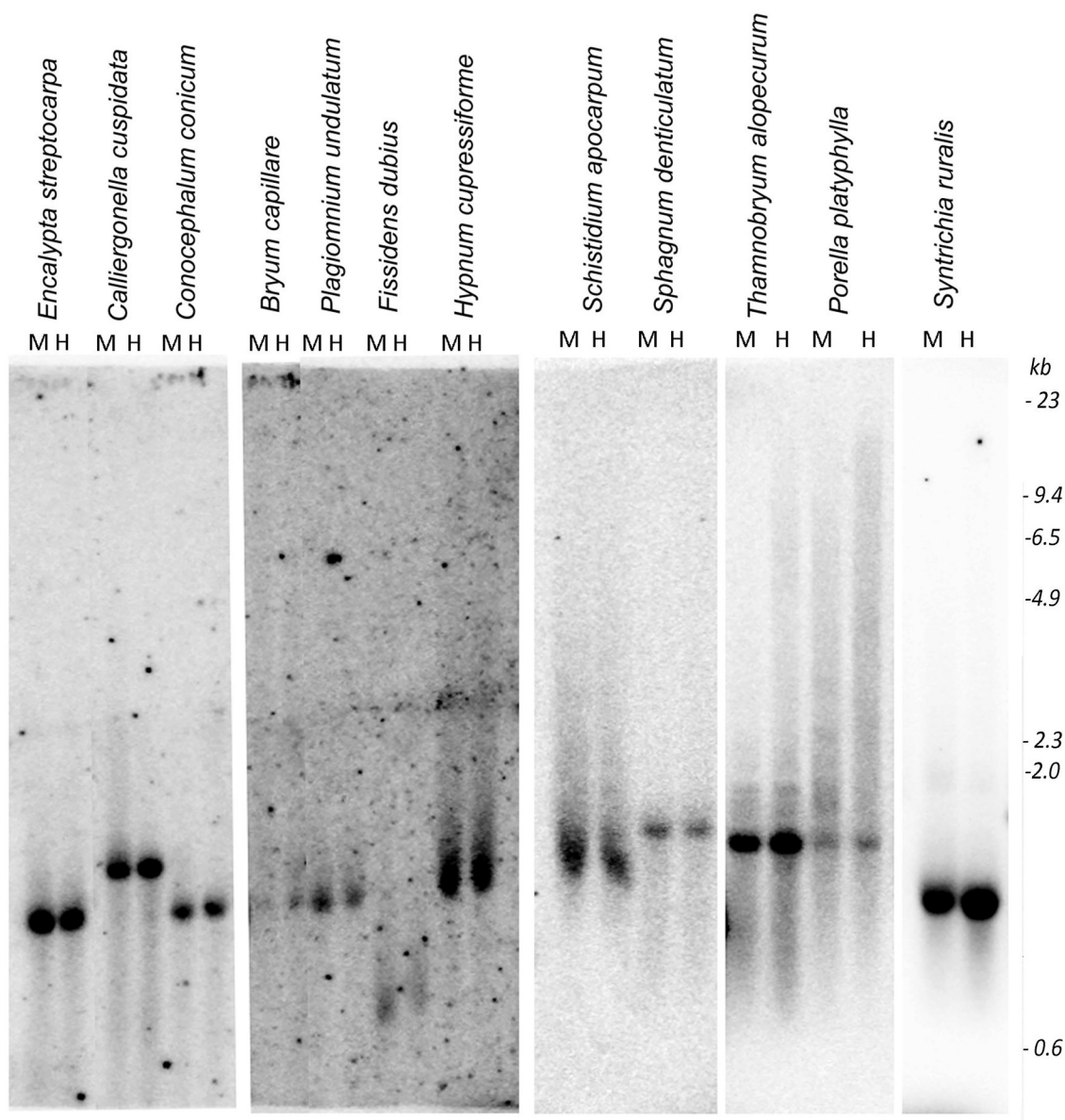


A



B

*Polytrichum formosum*Gam. Spor.  
M H M H

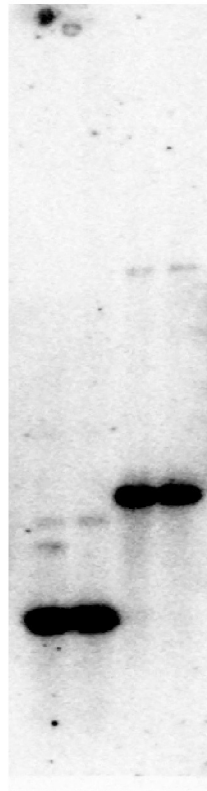
C

*Dicranum scoparium*  
pop. Zlate Hory

M H B P

*Marchantia polymorpha*  
pop. Zlate Hory

M H B P

*Funaria hygrometrica*  
pop. Zlate Hory

M H B P

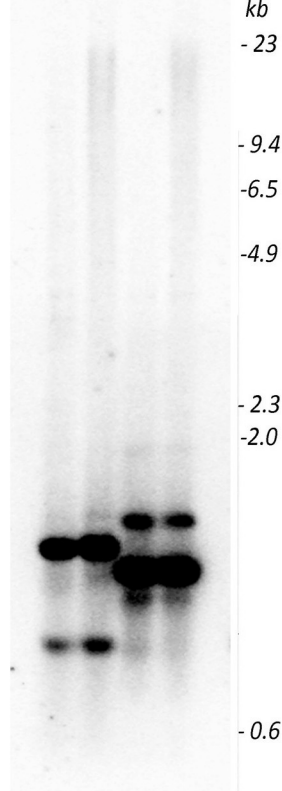


Figure S1 Southern blot hybridization of the 26S rDNA (A-C), PforCL1 (B) probes to the *MspI* (M), *HpaII* (H), *BstNI* (B) and *PspGI* (P) - digested genomic DNAs. In (C) analysis of three species from Zlate Hory populations (Czech Republic) is shown. Gam. - gametophyte, Spor. - sporophyte.