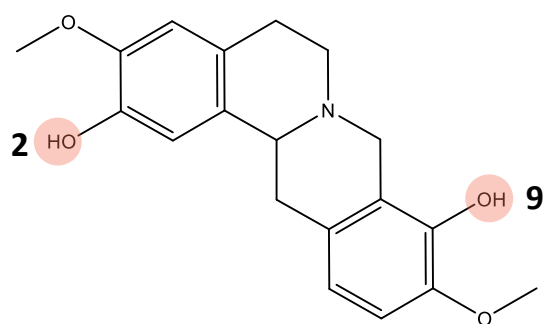
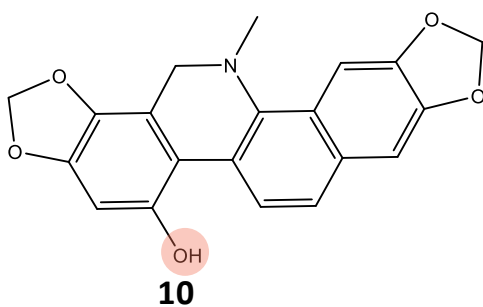


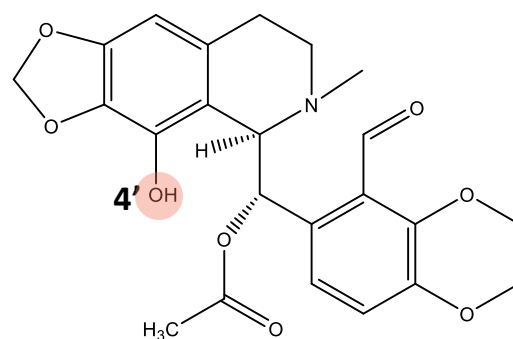
1-Benzylisoquinoline
(Norlaudanosoline)



Protoberberine
(Scoulerine)



Benzo[c]phenanthridine
(10-hydroxydihydrosanguinarine)



Pthalideisoquinoline
(4'-O-desmethyl-3-O-acetylpapaveroxine)

Supplementary Figure 4. Position of hydroxyl groups targeted by BIA *O*-methyltransferases. Corresponding enzymes are listed in Supplementary Table 1.