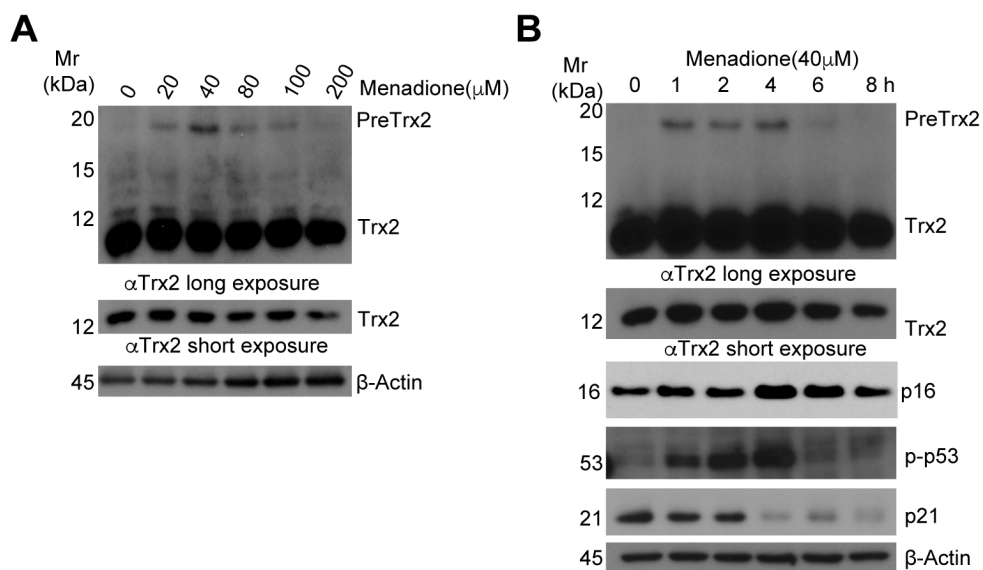


Supplemental Figure



Supplemental Figure 1: Senescence stimuli impair Trx2 processing. (A) Effects of different doses of menadione on Trx2 processing. HUVECs were incubated with different doses of menadione as indicated. Trx2 protein was determined. **B.** Kinetics of menadione on Trx2 processing and senescence. HUVECs were incubated with menadione at 40 μ M for indicated time. Trx2 protein and senescence markers (p16, p-p53, and p21) were determined by Western blotting with specific antibodies (C).