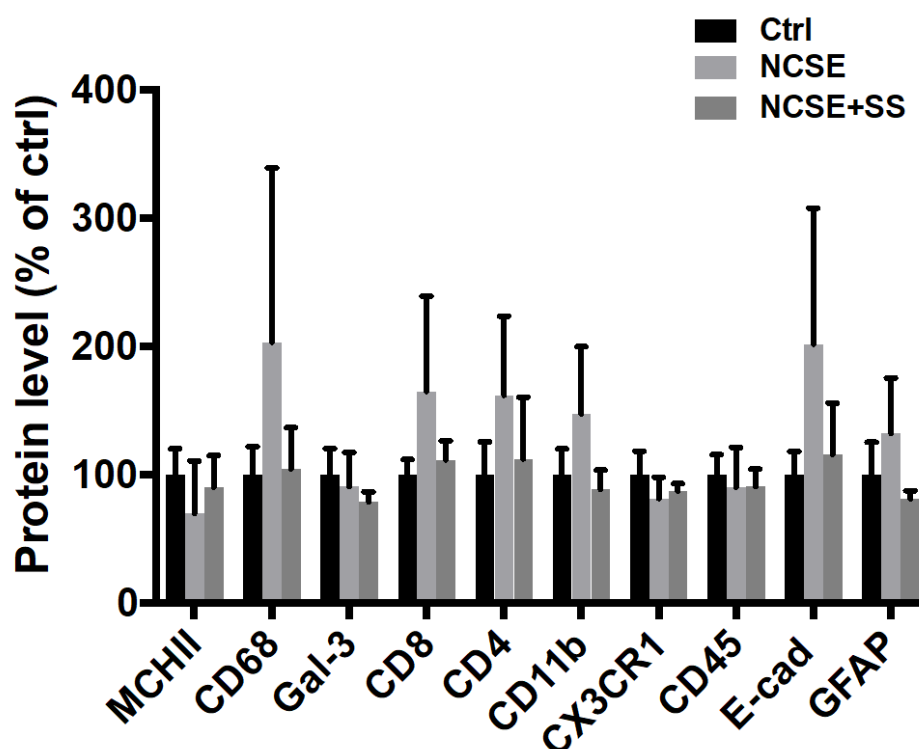


Supplementary figure 2

Western blot analysis of immune proteins in spleen tissue at 4wks post-NCSE



S2 Figure. Western blot analysis of spleen tissue 4wks following NCSE with or without additional spontaneous seizures. Data (mean \pm standard error of mean) are presented as percentage change relative to Ctrl and normalized to either b-actin (42 kDa) or glyceraldehyde-3-phosphate dehydrogenase (37 kDa). Ctrl; n = 7-12, NCSE; n = 4, NCSE+SS; n=10-12. NCSE+SS, NCSE with spontaneous seizures; MHCII, major histocompatibility complex; Gal-3, galectin-3, E-cad, E-cadherin; GFAP, anti-glial fibrillary acidic protein. *p < 0.05, unpaired t test.