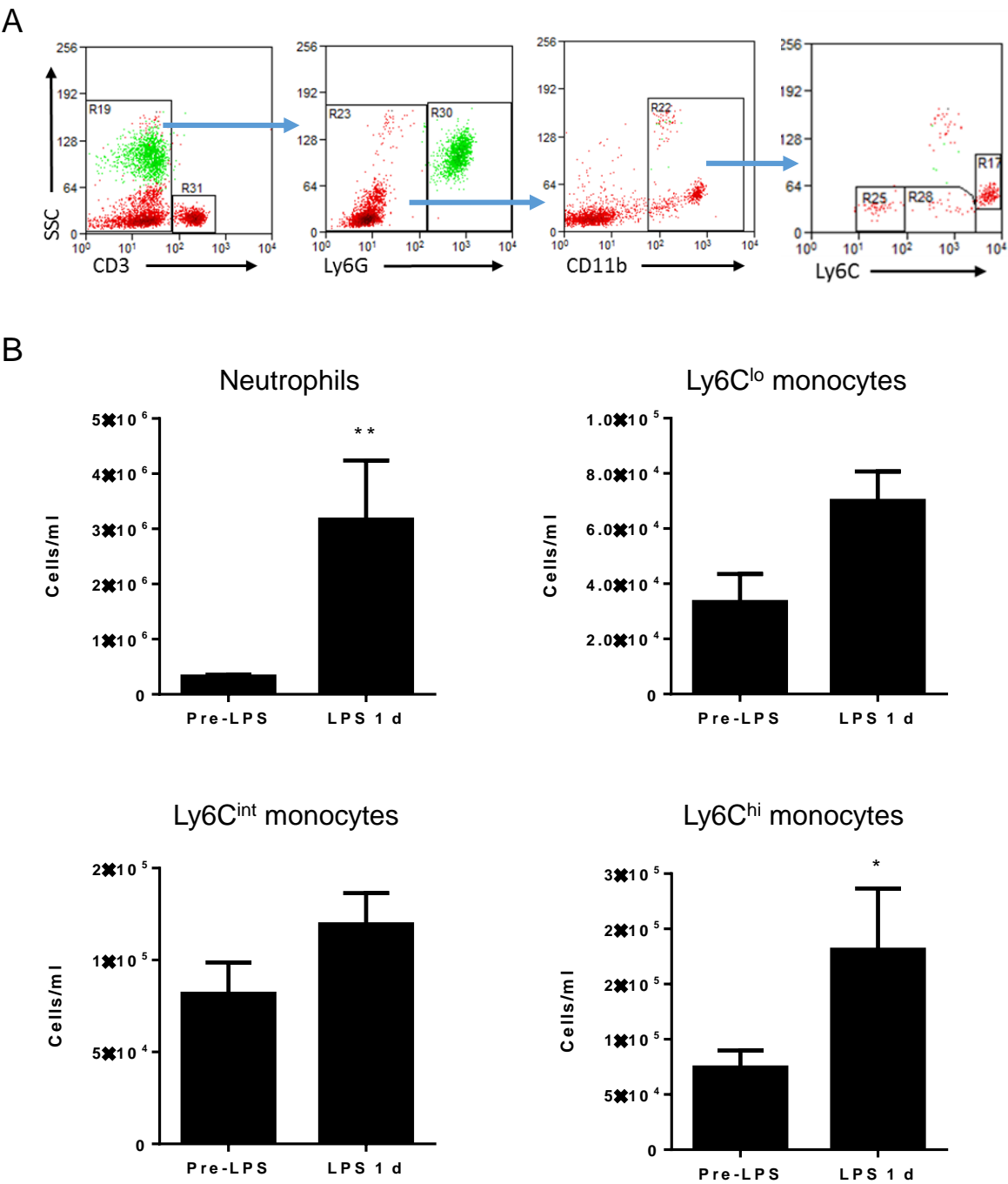


Supplementary Figure 1



**Supplementary Figure 1.** (A) Flow cytometry gating scheme to identify blood myeloid cell populations. CD3<sup>-</sup> cells were selected and then neutrophils defined as Ly6G<sup>+</sup>SSC<sup>hi</sup>. Ly6G<sup>-</sup>CD11b<sup>+</sup> cells were analysed for Ly6C – three distinct monocyte populations were identified based on intensity of Ly6C expression. (B) Numbers of blood myeloid cell populations in venous blood samples collected before and after intracerebral LPS injection. \*P < 0.05, \*\*P < 0.01; Student's t test. N = 4-6 mice per group.