

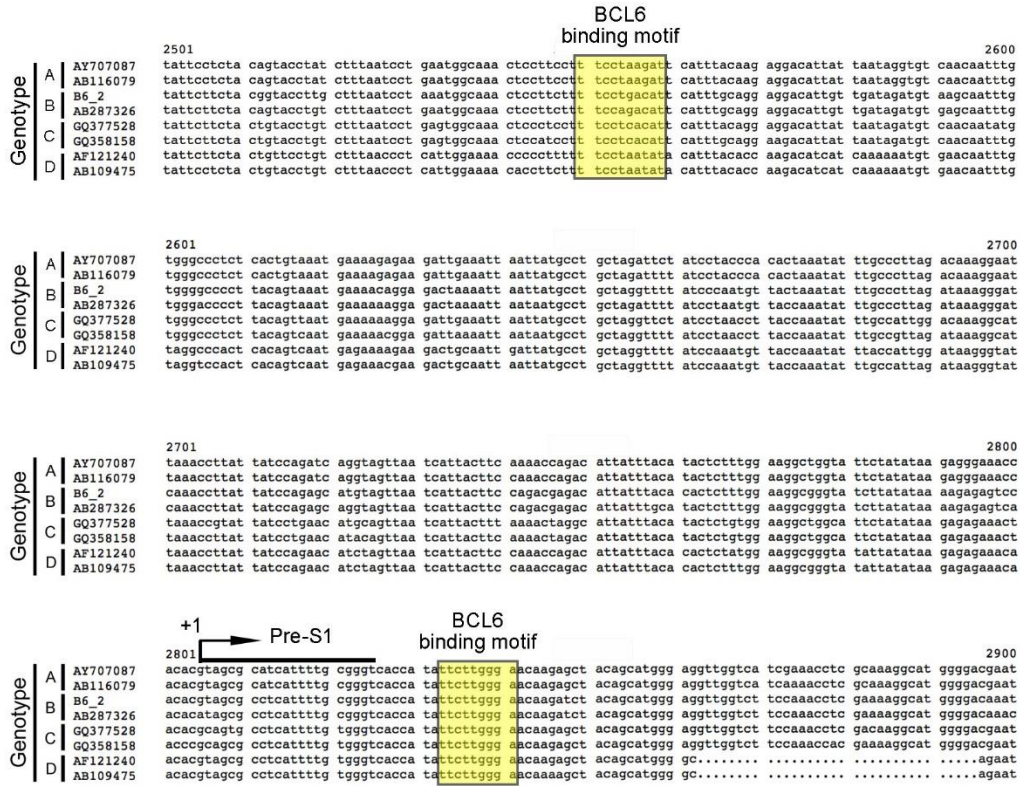
Supplementary Table S1: Primer sequences

Target gene	Forward primer (5'-3')	Reverse primer (5'-3')
<i>Primers for qPCR</i>		
Mouse <i>Bcl6</i>	CCCCGGCTGACAGCTGTAT	ATGACAACGTCCGTCAAGATGT
Human <i>BCL6</i>	GCCAGTCCCTGGTGAGTACAG	TGCATARCACTTCGTGCCTCTT
<i>Il-6</i>	TGGTGACAACCACGGCCTTCC	AAGCCTCCGACTTGTGAAGTGGT
Mouse <i>Tnf-α</i>	CCTCCTGGCCAACGGCATGG	TCGGCTGACGGTGTGGGTGA
Human <i>TNF-α</i>	TCCTTCAGACACCCTCAACC	AGGCCCCAGTTTGAATTCTT
<i>Il-12</i>	AGAGTTTCTAGATGCTGGCCAGTAC	TTGTGGAGCAGCAGATGTGAGT
<i>Il-17d</i>	TTGTAGTGCTCAGATGAACTTCCTTCT	CCAGATCCGGAGCACTCATT
<i>Il-23a</i>	CCACAAGGACTCAAGGACAACAG	CCCCTTTGAAGATGTCAGAGTCA
Mouse <i>Cxcl9</i>	GATCAAACCTGCCTAGATCC	GGCTGTGTAGAACACAGAGT
Mouse <i>Cxcl10</i>	CGCTGAGAGACATCCCGAGC	TGCTGTCCATCACAGCACCG
Human <i>CXCL9</i>	CCACCTACAATCCTTGAAAGACCTTA	GACATGTTTGAAGTCCATTCTTCAGT
Human <i>CXCL10</i>	CAATTTTGTCCACGTGTTGAGATC	CTTTTCCTTGCTAACTGCTTTCA
<i>GAPDH</i>	GTATTGGGCGCCTGGTCACC	CGCTCCTGGAAGATGGTGATGG
β-actin	GATCTGGCACCAACACCTTCT	CTTTTCACGGTTGGCCTTAG
HBV detection	CAGCTTGGAGGCTTGAACAGT	AGGAGGCTGTAGGCATAAATTGG
HBV Core promoter	CCAAGGTCTTGCATAAGAGGA	CCAAGTCTCCCACTCAGTAAA
HBV pre-S1 promoter	TGCCCTTAGATAAAGGGATCAA	ATACCCGCCTTCCAAAGAGT
HBV pre-S2 promoter	CTCCTCATGGGGGACTGTT	GTAGGCTGCCTTCCTGACTG
HBV X promoter	TCTGAACCTTTACCCCGTTG	GAGTTCCGCAGTATGGATCG
<i>Primers for the probe used for Southern and Northern blot</i>		
HBx probe	CCGCTCGAGCCATGGCTGCTAGGCTGT C	CATGCCATGGTGGCAGAGGTGAAAAAG TTGC

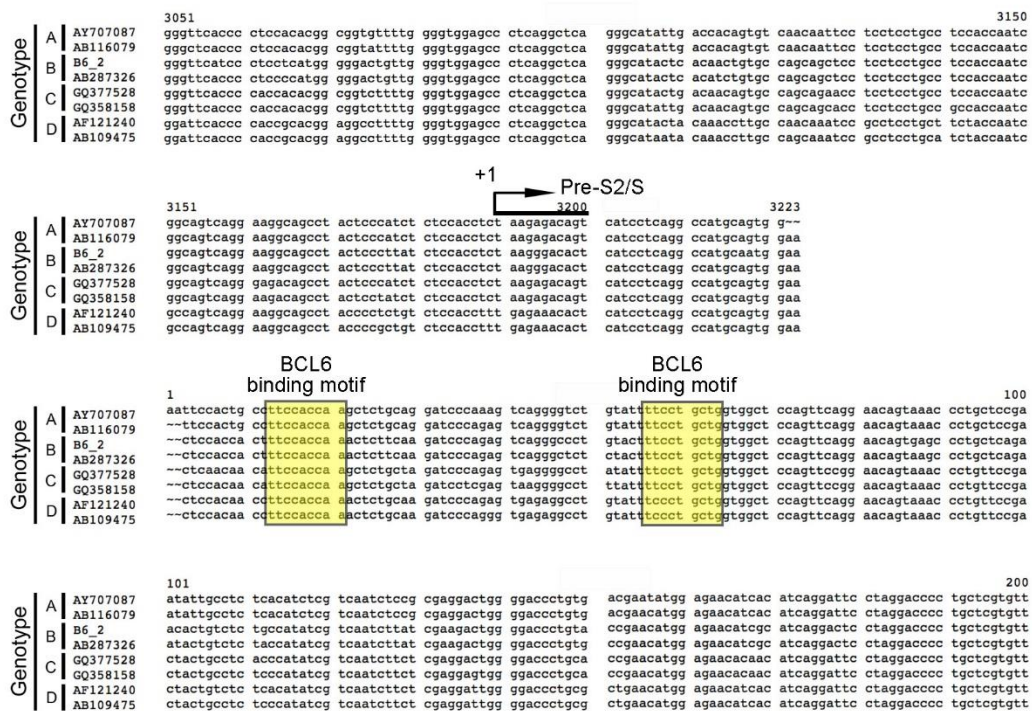
Core promoter and downstream regions

Genotype	A	1551												1650											
		AY707087	ccgtctgtgc	cttctcatct	gccggtccgt	gtgcaacttcg	cttcaactct	gcacgttgca	tggagaccac	cgtgaacgcc	catcagatcc	tgcccaaggt													
		AB116079	ccgtctgtgc	cttctcatct	gccggtccgt	gtgcaacttcg	cttcaactct	gcacgttgca	tggcgaccac	cgtgaacgcc	catcagatcc	tgcccaaggt													
		B6_2	ccgtctgtgc	cttctcatcc	acccgaccctg	gtgcaacttcg	cttcaactct	gcacgttcgca	tgggaaccac	cgtgaacgcc	caccggaacc	tgcccaaggt													
		AB287326	ccgtctgtgc	cttctcatct	gccggaccctg	gtgcaacttcg	cttcaactct	gcacgttgca	tggagaccac	cgtgaacgcc	caccggaacc	tgcccaaggt													
Genotype	B	1551												1650											
		GQ377528	ccgtctgtgc	cttctcatct	gccggaccctg	gtgcaacttcg	cttcaactct	gcacgttgca	tggagaccac	cgtgaacgcc	caccggaacc	tgcccaaggt													
		GQ358158	ccgtctgtgc	cttctcatct	gccggtccgt	gtgcaacttcg	cttcaactct	gcacgttgca	tggagaccac	cgtgaacgcc	caccggaacc	tgcccaaggt													
		AF121240	ccgtctgtgc	cttctcatct	gccggaccctg	gtgcaacttcg	cttcaactct	gcacgttcgca	tggagaccac	cgtgaacgcc	caccggaacc	tgcccaaggt													
		AB109475	ccgtctgtgc	cttctcatct	gccggaccctg	gtgcaacttcg	cttcaactct	gcacgttcgca	tggagaccac	cgtgaacgcc	caccatctct	tgcccaaggt													
BCL6 binding motif																									
Genotype	A	1651												1750											
		AY707087	cttacataag	aggactcttg	gactccacagc	aattgtcaacg	accgaccttg	aggcctactt	caaagactgt	gtgtttaagc	actgggagga	gctgggggag													
		AB116079	cttacataag	aggactcttg	gactccacagc	aattgtcaacg	accgaccttg	aggcctactt	caaagactgt	gtgtttaagc	actgggagga	gctgggggag													
		B6_2	cttgcataag	aggactcttg	gactctcaagc	aattgtcaacg	accgaccttg	aggcctactt	caaagactgt	gtgtttaagc	actgggagga	gctgggggag													
		AB287326	cttgcataag	aggactcttg	gactctcaagc	aattgtcaacg	accgaccttg	aggcctactt	caaagactgt	gtgtttaagc	actgggagga	gctgggggag													
Genotype	C	1651												1750											
		GQ377528	cttacataag	aggactcttg	gactctcaagc	aattgtcaacg	accgaccttg	aggcctactt	caaagactgt	gtgtttaagc	actgggagga	gctgggggag													
		GQ358158	cttacataag	aggactcttg	gactctcaagc	aattgtcaacg	accgaccttg	aggcctactt	caaagactgt	gtgtttaagc	actgggagga	gctgggggag													
		AF121240	cttacataag	aggactcttg	gactctctgt	aattgtcaacg	accgaccttg	aggcctactt	caaagactgt	gtgtttaagc	actgggagga	gctgggggag													
		AB109475	cttacataag	aggactcttg	gactctctgt	aattgtcaacg	accgaccttg	aggcctactt	caaagactgt	gtgtttaagc	actgggagga	gctgggggag													
<div><div>+1</div><div>PreCore</div><div>+1</div><div>Pregenomic</div></div>																									
Genotype	A	1751												1850											
		AY707087	gagattaggt	taaaggtctt	tgtattagga	ggctgtaggc	ataaattggt	ctgcgcacca	gcaccatgca	actttttcac	ctctgcttaa	tcattctctt													
		AB116079	gagattaggt	taaaggtctt	tgtattagga	ggctgtaggc	ataaattggt	ctgttcacca	gcaccatgca	actttttcac	ctctgcttaa	tcattctctt													
		B6_2	gagattaggt	taaaggtctt	tgtattagga	ggctgtaggc	ataaattggt	ctgttcacca	gcaccatgca	actttttcac	ctctgcttaa	tcattctctt													
		AB287326	gagattaggt	taaaggtctt	tgtattagga	ggctgtaggc	ataaattggt	ctgttcacca	gcaccatgca	actttttcac	ctctgcttaa	tcattctctt													
Genotype	B	1751												1850											
		GQ377528	gagattaggt	taaaggtctt	tgtattagga	ggctgtaggc	ataaattggt	ctgttcacca	gcaccatgca	actttttcac	ctctgcttaa	tcattctctt													
		GQ358158	gagattaggt	taaaggtctt	tgtattagga	ggctgtaggc	ataaattggt	ctgttcacca	gcaccatgca	actttttcac	ctctgcttaa	tcattctctt													
		AF121240	gagattaggt	taaaggtctt	tgtattagga	ggctgtaggc	ataaattggt	ctgcgcacca	gcaccatgca	actttttcac	ctctgcttaa	tcattctctt													
		AB109475	gagattaggt	taaaggtctt	tgtattagga	ggctgtaggc	ataaattggt	ctgcgcacca	gcaccatgca	actttttcac	ctctgcttaa	tcattctctt													
Genotype	C	1751												1850											
		AY707087	tacactgtccc	actgtgtcaag	ctcccaagct	gtgccttggg	tgaccttggg	gatggacat	tgaccttat	aaagaatttg	gagctactgt	ggagttactc													
		AB116079	tacactgtccc	actgtgtcaag	ctcccaagct	gtgccttggg	tgaccttggg	gatggacat	tgaccttat	aaagaatttg	gagctactgt	ggagttactc													
		B6_2	tctactgtcct	actgtgtcaag	ctcccaagct	gtgccttggg	tgaccttggg	gatggacat	tgaccttat	aaagaatttg	gagctctgtg	ggagttactc													
		AB287326	tctactgtcct	actgtgtcaag	ctcccaagct	gtgccttggg	tgaccttggg	gatggacat	tgaccttat	aaagaatttg	gagctactgt	ggagttactc													
Genotype	D	1751												1850											
		GQ377528	tctactgtcct	actgtgtcaag	ctcccaagct	gtgccttggg	tgaccttggg	gatggacat	tgaccttat	aaagaatttg	gagctctgtg	ggagttactc													
		GQ358158	tctactgtcct	actgtgtcaag	ctcccaagct	gtgccttggg	tgaccttggg	gatggacat	tgaccttat	aaagaatttg	gagctctgtg	ggagttactc													
		AF121240	tctactgtcct	actgtgtcaag	ctcccaagct	gtgccttggg	tgaccttggg	gatggacat	tgaccttat	aaagaatttg	gagctactgt	ggagttactc													
		AB109475	tctactgtcct	actgtgtcaag	ctcccaagct	gtgccttggg	tgaccttggg	gatggacat	tgaccttat	aaagaatttg	gagctactgt	ggagttactc													

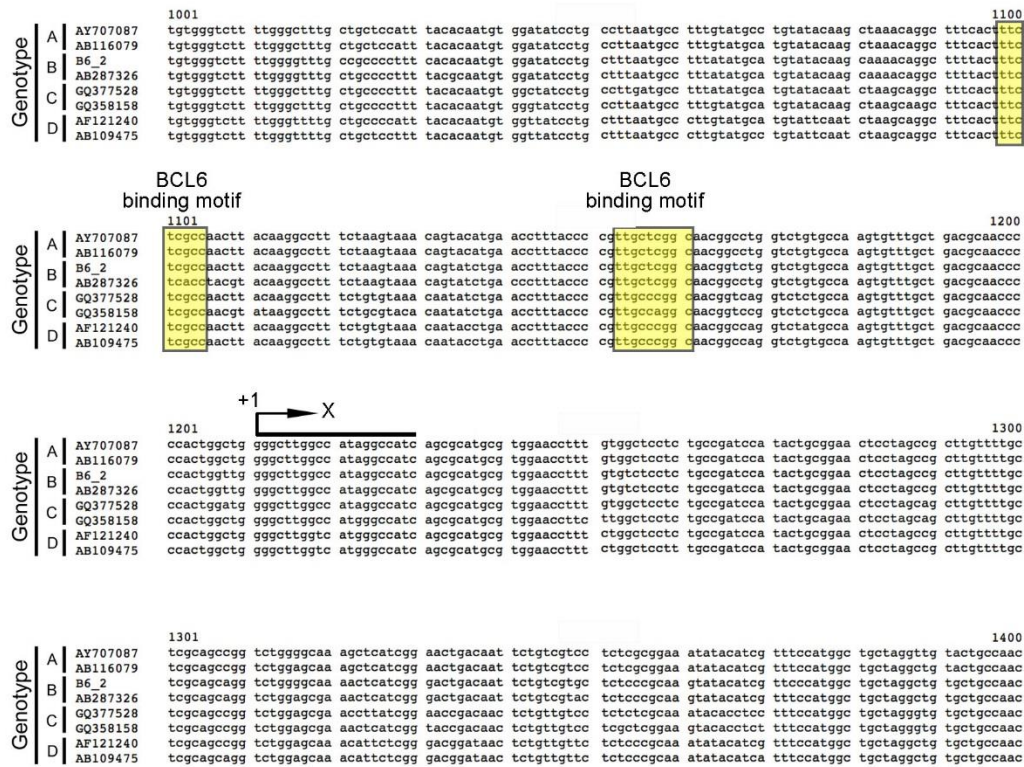
Pre-S1 promoter and downstream regions



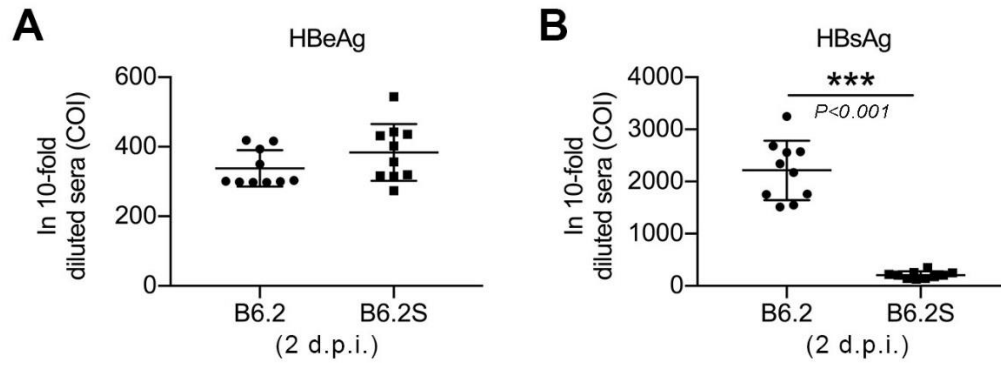
Supplementary Figure S2. The putative BCL6 binding sites were found in the pre-S1 promoter and downstream regions of four genotypes of HBV. The sequences in the pre-S1 promoter and downstream regions (nt 2501- nt 2900) of two representative clones for HBV genotypes A, B, C and D were extracted from NCBI data base and aligned. The putative BCL6 binding sites are indicated by the yellow boxes; +1 indicates the transcription start site.



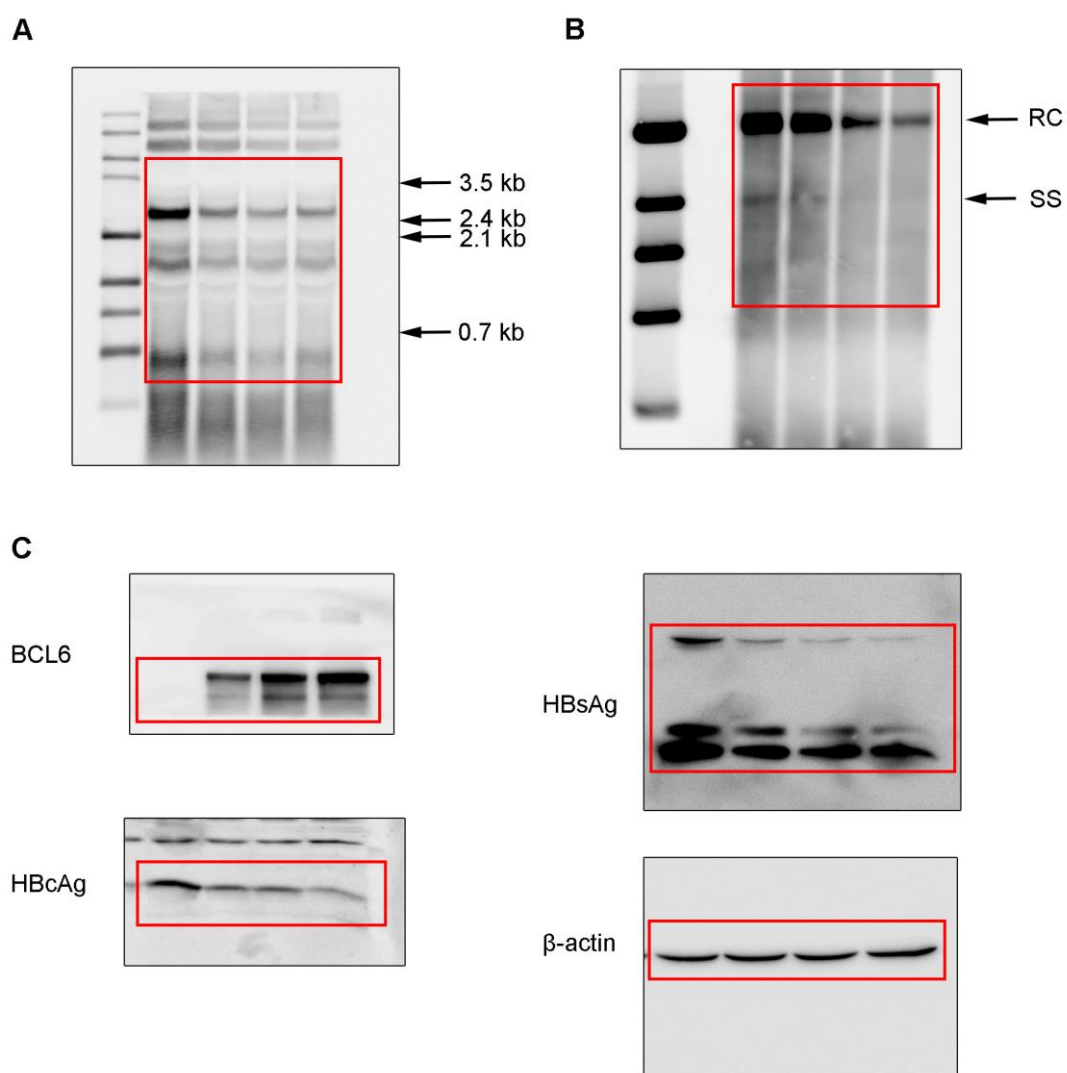
Supplementary Figure S3. The putative BCL6 binding sites were found in the pre-S2 promoter and downstream regions of four genotypes of HBV. The sequences in the pre-S2 promoter and downstream regions (nt 3051-nt 3223/1- nt 200) of two representative clones for HBV genotypes A, B, C and D were extracted from NCBI data base and aligned. The putative BCL6 binding sites are indicated by the yellow boxes; +1 indicates the transcription start site.



Supplementary Figure S4. The putative BCL6 binding sites were found in the X promoter and downstream regions of four genotypes of HBV. The sequences in the X promoter region (nt 1001- nt 1400) of two representative clones for HBV genotypes A, B, C and D were extracted from NCBI data base and aligned. The putative BCL6 binding sites are indicated by the yellow boxes; +1 indicates the transcription start site.

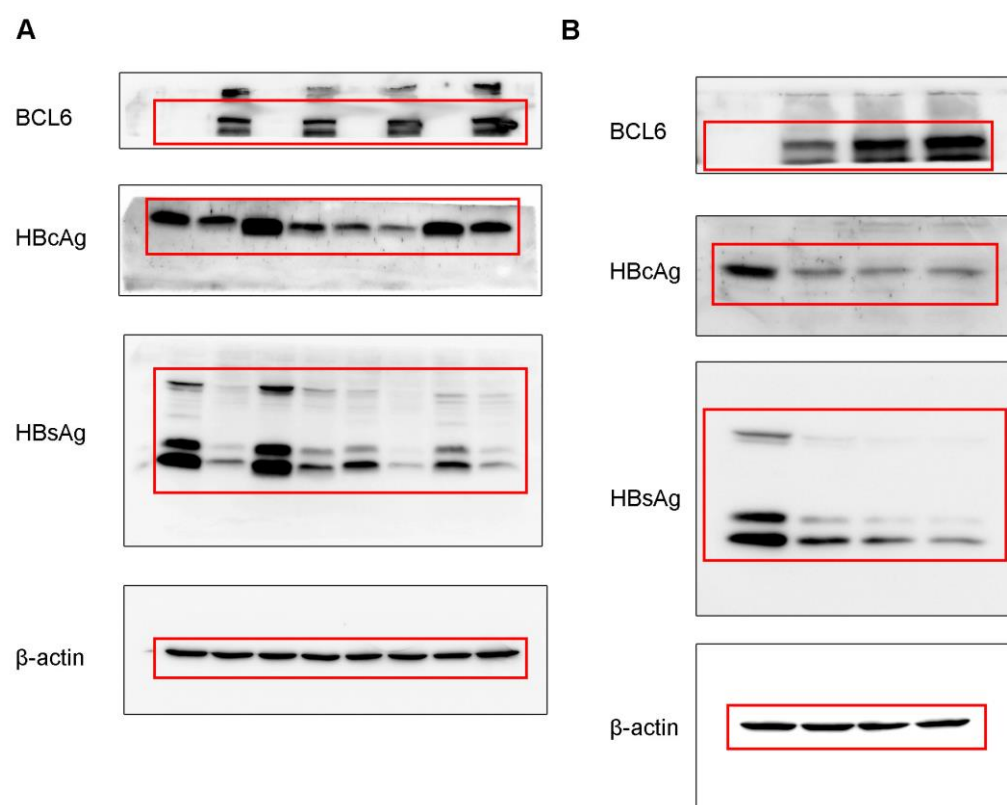


Supplementary Figure S5. B6.2S secretes much lower levels of HBsAg than B6.2 into serum. (A) The serum levels of HBeAg measured on day 2 post-DNA injection showed that the HDI efficiencies between the B6.2 and the B6.2S groups were comparable. (B) The serum levels of HBsAg in the B6.2S group were much lower than those in the B6.2 group. *** $P < 0.001$, the Student's t -test.



Supplementary Figure S6. Original blot images

(A) For Figure 5B. (B) For Figure 5D. (C) For Figure 5E.



Supplementary Figure S7. Original blot images

(A) For Figure 6B. (B) For Figure 6D.