

Supplementary Material

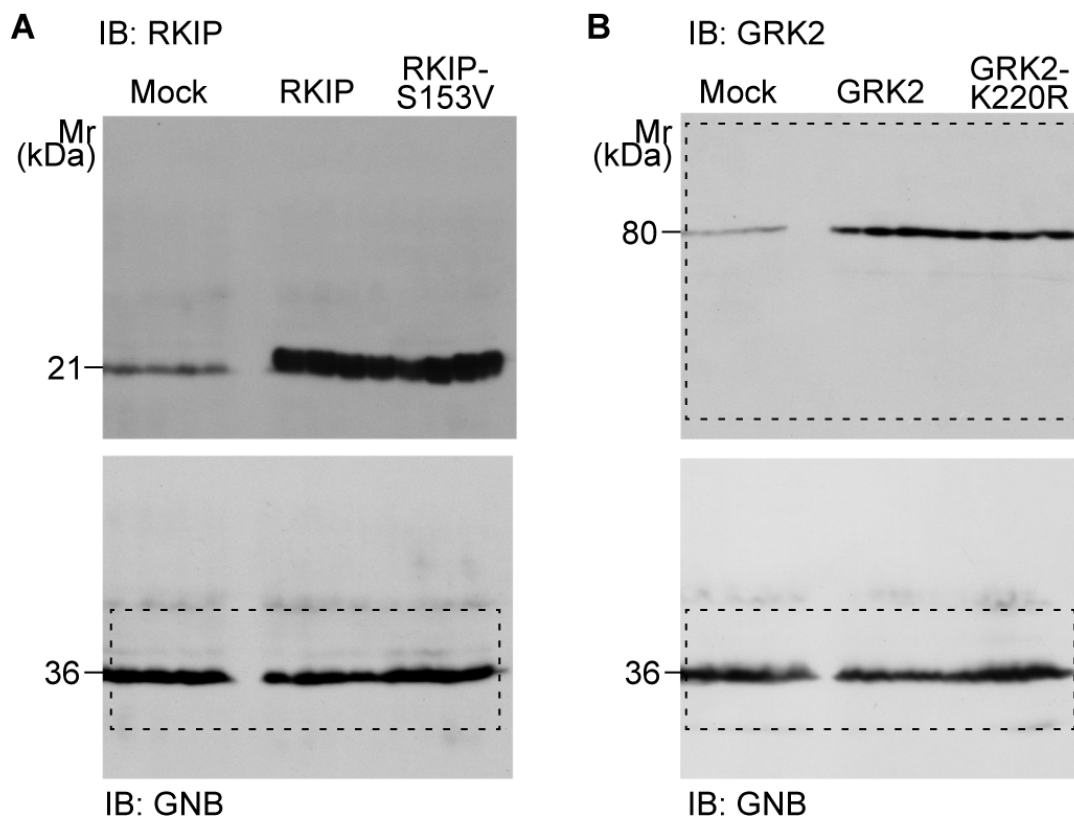
Sensitization of the Angiotensin II AT1 Receptor Contributes to RKIP-Induced Symptoms of Heart Failure

Stefan Wolf, Joshua Abd Alla, Ursula Quitterer*

*** Correspondence:** ursula.quitterer@pharma.ethz.ch

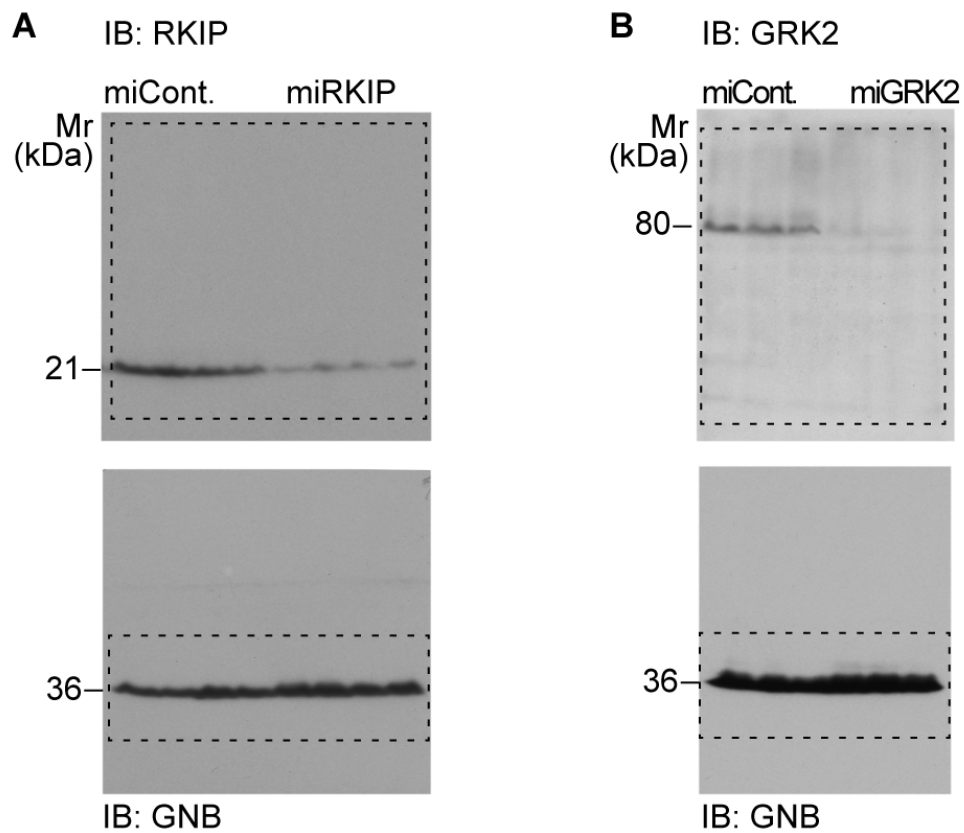
1 Supplementary Figures

Supplementary Figure 1



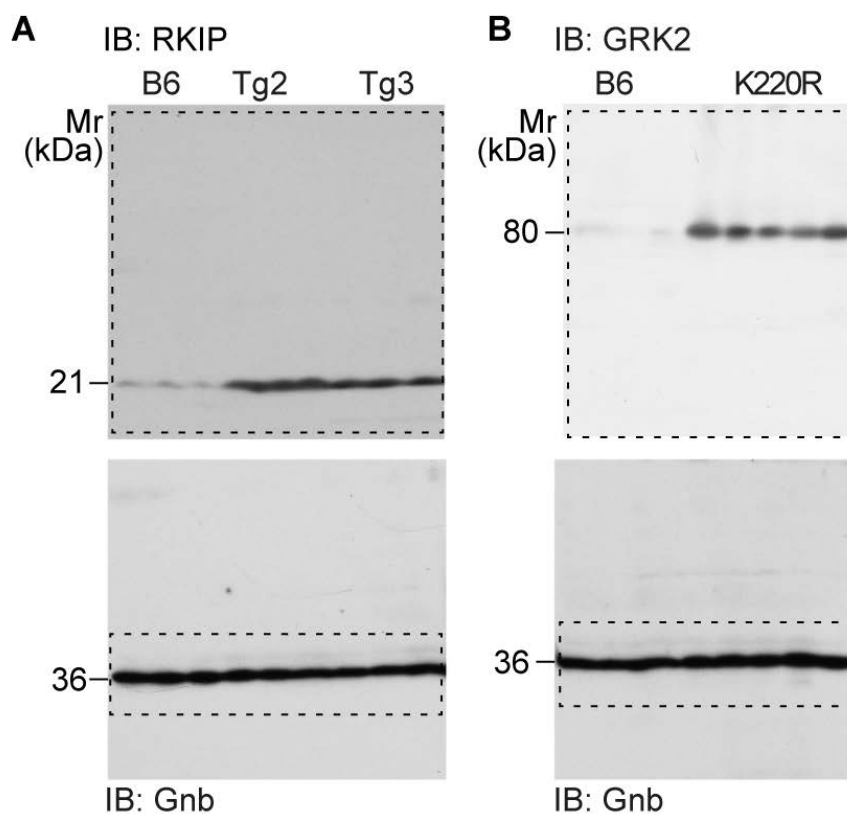
Supplementary Figure 1. (A) Immunoblots of Figure 1B. (B) Immunoblots of Figure 1C. (Related to Figure 1).

Supplementary Figure 2



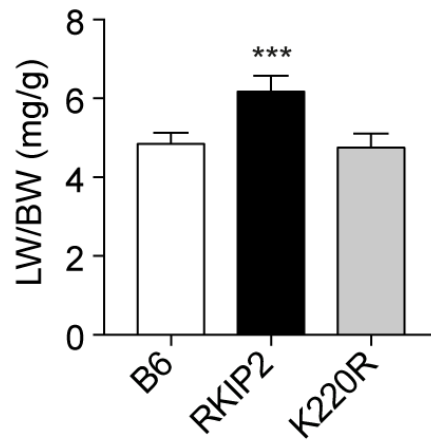
Supplementary Figure 2. (A) Immunoblots of Figure 2A. (B) Immunoblots of Figure 2B. (Related to Figure 2).

Supplementary Figure 3



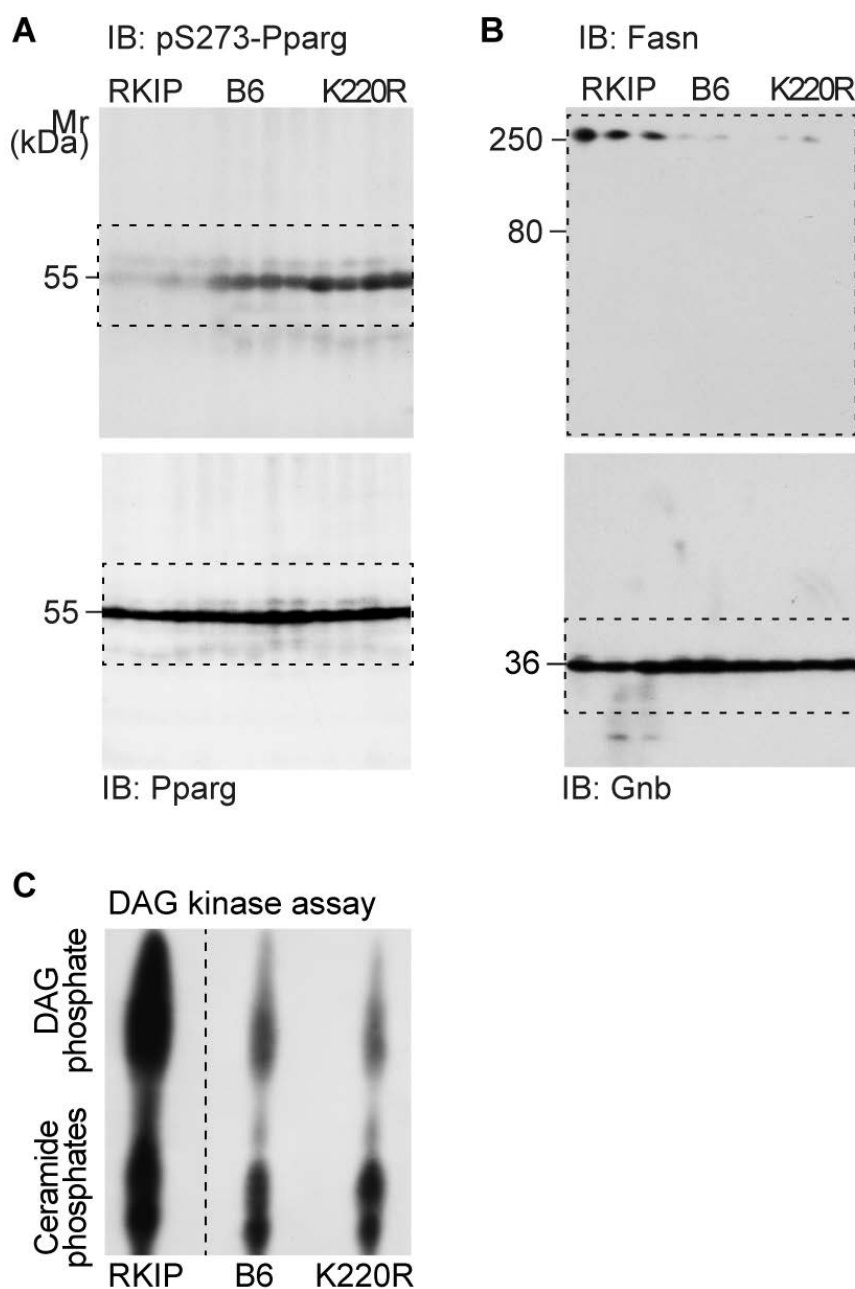
Supplementary Figure 3. (A) Immunoblots of Figure 3A. (B) Immunoblots of Figure 3B. (Related to Figure 3).

Supplementary Figure 4



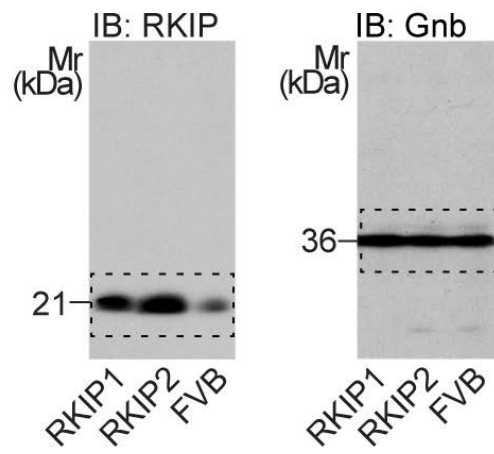
Supplementary Figure 4. Lung-to-body weight ratio of B6, Tg-RKIP2 and Tg-GRK2K220R mice (\pm s.d.; n=6; ***, $p < 0.001$ vs. B6 and K220R; Tukey's test). (Related to Figure 4).

Supplementary Figure 5



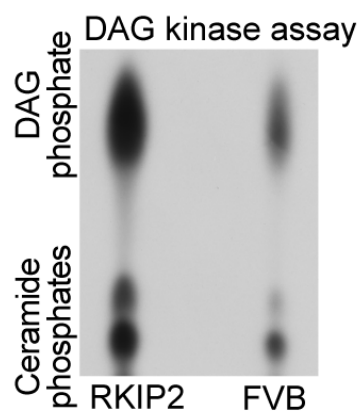
Supplementary Figure 5. (A) Immunoblots of Figure 6A. (B) Immunoblots of Figure 6B. (C) Autoradiograph of thin layer chromatography (TLC) detection of cardiac diacylglycerol (DAG) and ceramides upon phosphorylation by the DAG kinase shows increased cardiac DAG and ceramide contents in Tg-RKIP mice compared to B6 and Tg-GRK2-K220R mice. Quantitative data are shown in Figure 6G,H (Related to Figure 6).

Supplementary Figure 6



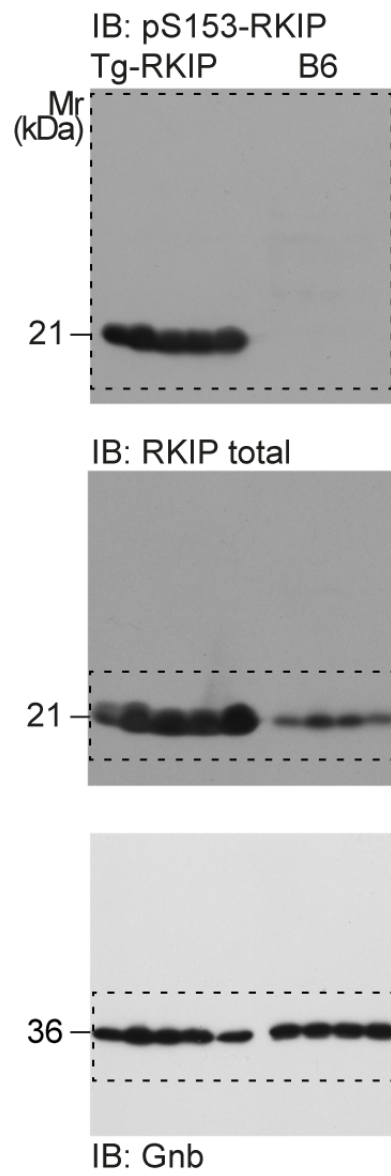
Supplementary Figure 6. Immunoblots of Figure 7A.
(Related to Figure 7).

Supplementary Figure 7



Supplementary Figure 7. TLC autoradiograph of DAG kinase assay of Figure 8D,E detects increased cardiac DAG and ceramides in Tg-RKIP2 mice with FVB background. (Related to Figure 8).

Supplementary Figure 8



Supplementary Figure 8. Immunoblots of Figure 9A.
(Related to Figure 9).